

**TERPS  
INSTRUMENT APPROACH CHART**

AD ELEV 10

**ILS/DME RWY 26R  
AALBORG (EKYT)**

|                                       |                    |                         |                                     |                  |            |                                  |                |
|---------------------------------------|--------------------|-------------------------|-------------------------------------|------------------|------------|----------------------------------|----------------|
| COPENHAGEN CONTROL<br>259.375 124.550 |                    | AALBORG ATIS<br>120.475 | AALBORG APPROACH<br>309.950 123.975 |                  |            | AALBORG TOWER<br>284.775 118.300 |                |
| LOCALIZER/DME<br>YT 109.90/CH 36x     | APP COURSE<br>262° | GS INTCP ALT<br>2000 FT | GS<br>2.75°                         | DA<br><b>210</b> | TDZE<br>10 | ALS length<br>900 M              | LDA<br>8707 FT |

**NOTE:**

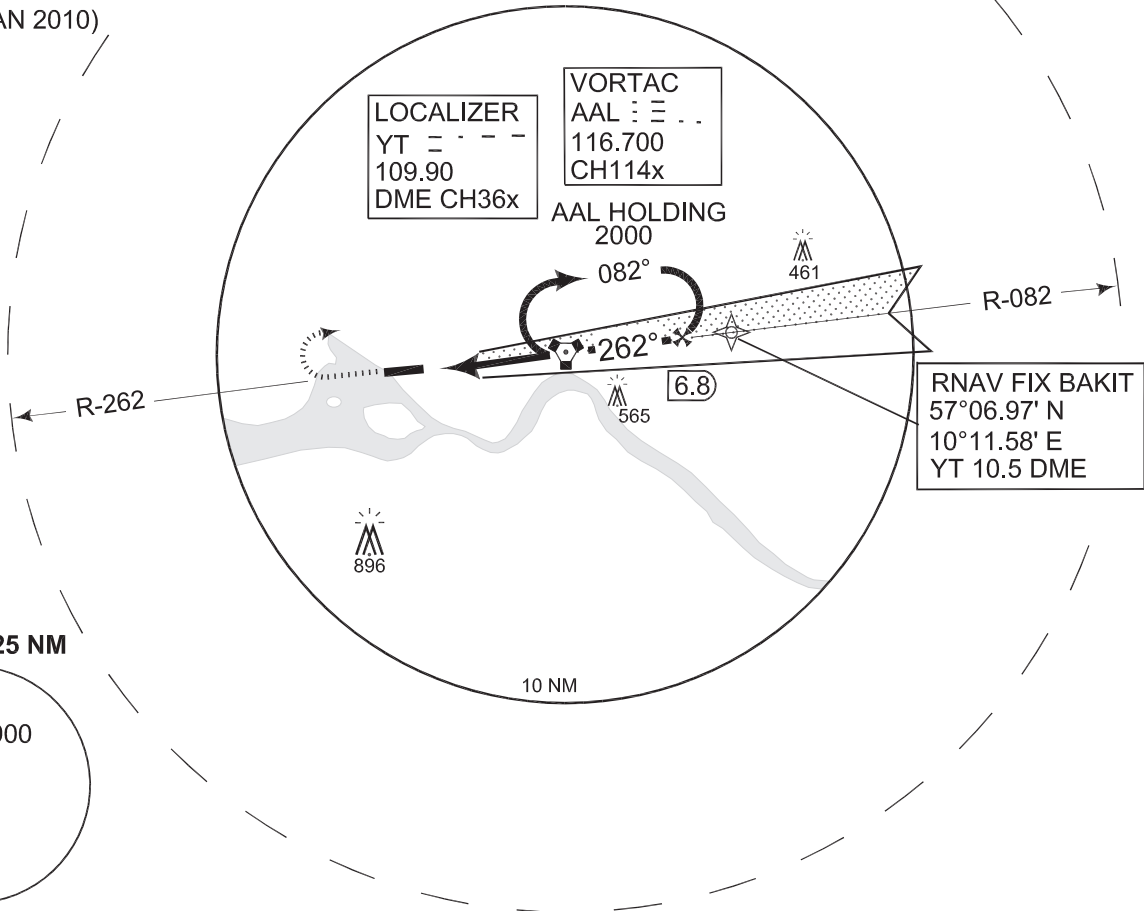
**a** CIRCLING N OF AD ONLY

**IAF (VORTAC AAL)**

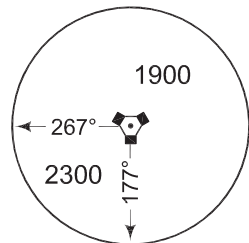
57°06.23'N  
09°59.74'E



1.5° E (JAN 2010)



**MSA AAL 25 NM**



**SAFE ALT 100NM 4000**

**MISSED APPROACH**  
Climb to 2000 FT on 262° right turn to hold on AAL VORTAC i. a. w atc instructions.

**TA 3000**  
GS 2.75  
TCH 37

The profile view shows the vertical path from 310 FT to 2000 FT. Key distance markers are 4 NM (VORTAC AAL/YT) and 6.8 NM (YT). The TDZE is 10 FT. The chart is categorized as CAT II.

| CATEGORY            | A                              | B                              | C                              | D                              | E                              |
|---------------------|--------------------------------|--------------------------------|--------------------------------|--------------------------------|--------------------------------|
| S-ILS CAT I         |                                | <b>210</b>                     | -800 200 (200-0.8/1.2)         |                                |                                |
| S-ILS CAT II        |                                | <b>110</b>                     | -400 100 (100-0.4/0.8)         |                                |                                |
| S-Localizer/DME 26R | <b>340</b>                     | -800 330 (400-0.8/1.6)         | <b>340</b>                     | -1200 330 (400-1.2/2.0)        |                                |
| CIRCLING <b>a</b>   | <b>360</b> -1600 350 (400-1.6) | <b>460</b> -1600 450 (500-1.6) | <b>500</b> -2400 490 (500-2.4) | <b>560</b> -3200 550 (600-3.2) | <b>640</b> -3600 630 (700-3.6) |

**ILS/DME RWY 26R**

57°05.57'N  
009°50.95'E

**AALBORG (EKYT)**

CHANGES: EDITORIAL

TACDEN FLIGHT INFORMATION 22 SEP 2011