

**TERPS
INSTRUMENT APPROACH CHART**

AD ELEV 10

**HI-VORTAC RWY 26R
AALBORG (EKYT)**

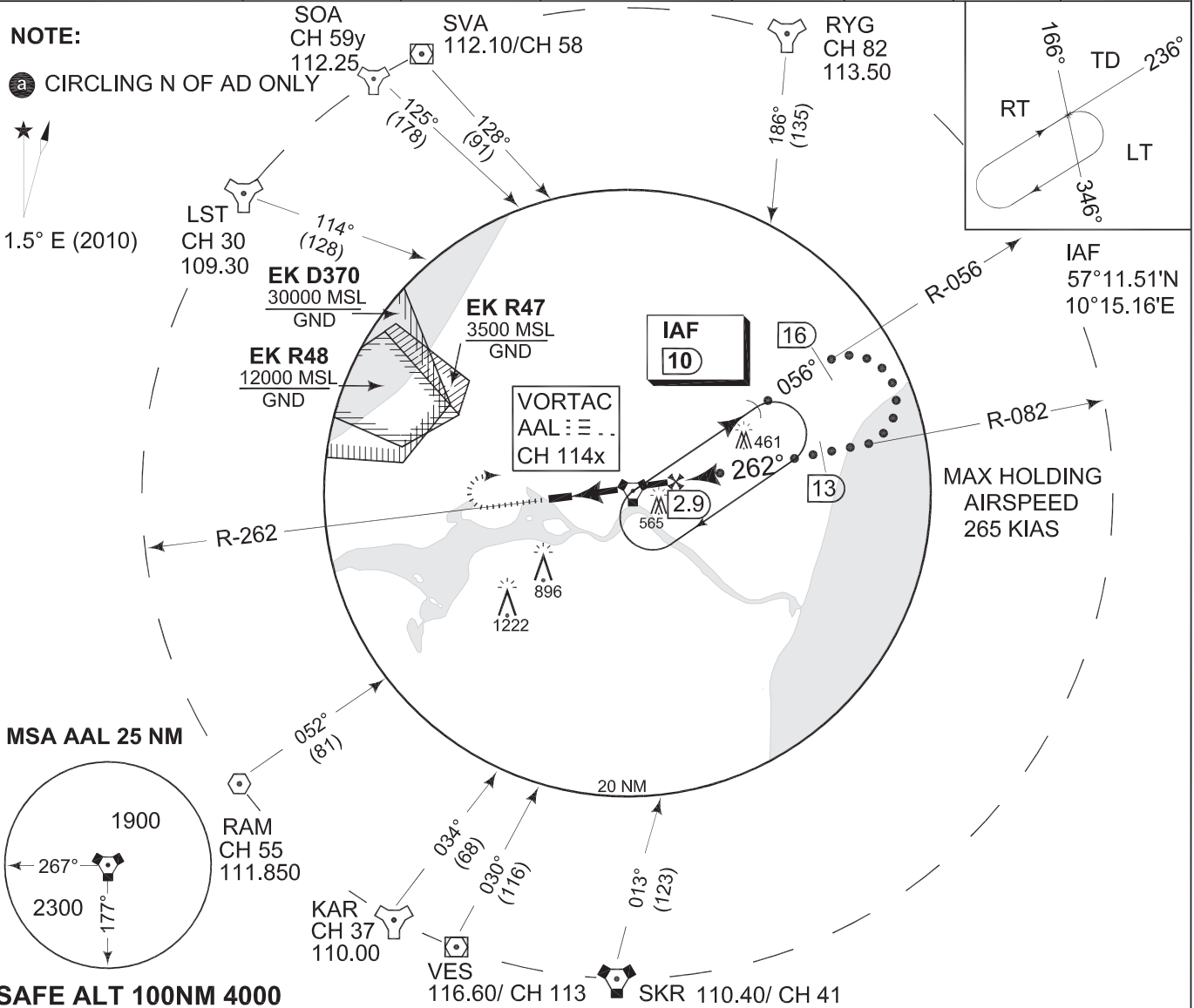
COPENHAGEN CONTROL 259.375 124.550		AALBORG ATIS 120.475		AALBORG APPROACH 309.950 123.975		AALBORG TOWER 284.775 118.300	
VORTAC AAL CH 114x	APP COURSE 262°	FAF ALT 2000 FT	DESCENT GR 260 FT/NM	MDA 440	TDZE 10	ALS length 900 M	LDA 8707 FT

NOTE:

a CIRCLING N OF AD ONLY

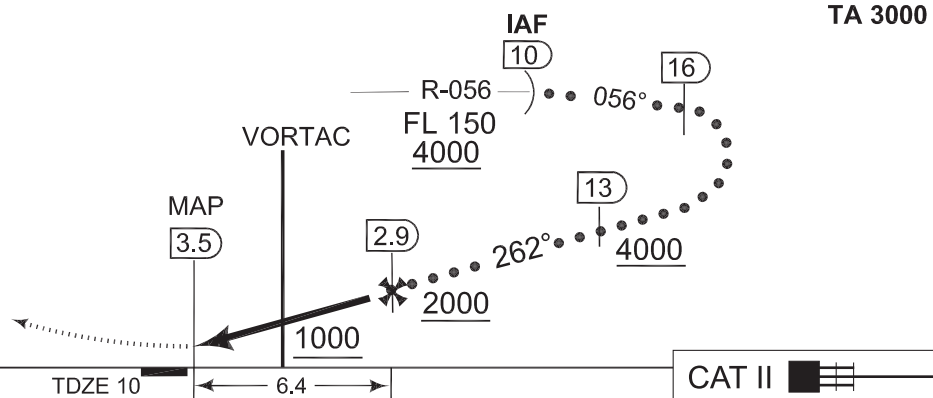


1.5° E (2010)



MISSED APPROACH

Climb to 2000ft on 262°
right turn to hold on AAL
VORTAC i.a.w. ATC instruction.



CHANGES: EDITORIAL

CATEGORY	C	D	E
S-VORTAC 26R	440 -1200 430 (500-1.2/2.0)	440 -1600 430 (500-1.6/2.4)	
CIRCLING a	500 -2400 490 (500-2.4)	560 -3200 550 (600-3.2)	640 -3600 630 (700-3.6)

HI-VORTAC RWY 26R

57°05.57'N
009°50.95'E

AALBORG (EKYT)

TACDEN FLIGHT INFORMATION 22 SEP 2011