

AIR COMMAND DENMARK - MIL AIM

Address: Herningvej 30
DK-7470 Karup J
Denmark
Telephone: +45 728 11516
AFTN: EKMCYOYX
E-mail: FKO-KTP-F-AIM@mil.dk
Internet: www.flv.dk/milaim

MIL AIP DENMARK

AIRAC Cycle: 2212
Eff. 01 DEC 2022
Amendment No. 241

This AIRAC AMDT contains the following changes:

GEN 0.4 Checklist updated.
GEN 2.7 Sunrise/Sunset tables updated
EKYT VAC GL NDB removed, text updated, editorial.
EKYT NAC GL NDB removed, chart updated.
EKYT VFR 08L GL NDB removed, chart updated.
EKYT VFR 26R GL NDB removed, chart updated.
BGNO NDB 19 ARP corrected.

INSERT THE FOLLOWING PAGES:

GEN
GEN 0.4-1/ 01 DEC 2022
GEN 0.4-2 01 DEC 2022
GEN 0.4-3/ 01 DEC 2022
GEN 0.4-4 01 DEC 2022
GEN 0.4-5 01 DEC 2022
GEN 2.7-1 01 DEC 2022
GEN 2.7-2 01 DEC 2022
GEN 2.7-3 01 DEC 2022
GEN 2.7-4 01 DEC 2022
GEN 2.7-5 01 DEC 2022
GEN 2.7-6 01 DEC 2022
GEN 2.7-7 01 DEC 2022
GEN 2.7-8 01 DEC 2022
GEN 2.7-9 01 DEC 2022
GEN 2.7-10 01 DEC 2022
GEN 2.7-11 01 DEC 2022

AD
EKYT
VAC 01 DEC 2022
NAC 01 DEC 2022
VFR 08L 01 DEC 2022
VFR 26R 01 DEC 2022

BGNO
NDB RWY 19 01 DEC 2022

DESTROY THE FOLLOWING PAGES:

GEN
GEN 0.4-1/ 03 NOV 2022
GEN 0.4-2 03 NOV 2022
GEN 0.4-3/ 03 NOV 2022
GEN 0.4-4 03 NOV 2022
GEN 0.4-5 03 NOV 2022
GEN 2.7-1 24 FEB 2022
GEN 2.7-2 24 FEB 2022
GEN 2.7-3 24 FEB 2022
GEN 2.7-4 24 FEB 2022
GEN 2.7-5 24 FEB 2022
GEN 2.7-6 24 FEB 2022
GEN 2.7-7 24 FEB 2022
GEN 2.7-8 24 FEB 2022
GEN 2.7-9 24 FEB 2022
NEW PAGE
NEW PAGE

AD
EKYT
VAC 24 FEB 2022
NAC 24 FEB 2022
VFR 08L 24 FEB 2022
VFR 26R 24 FEB 2022

BGNO
NDB RWY 19 06 OCT 2022

END

BLANK

GEN 0.4 CHECKLIST OF AIP PAGES

PAGE	DATE	PAGE	DATE
GEN		2.5-5	11 AUG 2022
GEN0		2.6-1	24 FEB 2022
0.1-1	24 FEB 2022	2.6-2	24 FEB 2022
0.1-2	24 FEB 2022	2.6-3	24 FEB 2022
0.1-3	24 FEB 2022	2.7-1	01 DEC 2022
0.1-4	24 FEB 2022	2.7-2	01 DEC 2022
0.2-1	24 FEB 2022	2.7-3	01 DEC 2022
0.3-1	19 MAY 2022	2.7-4	01 DEC 2022
0.4-1	01 DEC 2022	2.7-5	01 DEC 2022
0.4-2	01 DEC 2022	2.7-6	01 DEC 2022
0.4-3	01 DEC 2022	2.7-7	01 DEC 2022
0.4-4	01 DEC 2022	2.7-8	01 DEC 2022
0.4-5	01 DEC 2022	2.7-9	01 DEC 2022
0.5-1	24 FEB 2022	2.7-10	01 DEC 2022
0.5-2	03 NOV 2022	2.7-11	01 DEC 2022
0.5-3	03 NOV 2022	2.8-1	24 FEB 2022
0.6-1	24 FEB 2022	2.8-2	24 FEB 2022
0.6-2	24 FEB 2022	2.8-3	24 FEB 2022
		2.8-4	24 FEB 2022
GEN1		2.8-5	21 APR 2022
1.1-1	24 FEB 2022	2.9-1	24 FEB 2022
1.2-1	24 FEB 2022	2.10-1	24 FEB 2022
1.2-2	24 FEB 2022		
1.3-1	16 JUN 2022	GEN3	
1.7-1	24 FEB 2022	3.1-1	24 FEB 2022
1.7-2	24 MAR 2022	3.2-1	16 JUN 2022
		3.3-1	24 FEB 2022
GEN2		3.3-2	24 FEB 2022
2.1-1	24 FEB 2022	3.4-1	24 FEB 2022
2.1-2	24 FEB 2022	3.4-2	24 FEB 2022
2.2-1	24 FEB 2022	3.4-3	24 FEB 2022
2.2-2	19 MAY 2022	3.5-1	24 FEB 2022
2.2-3	24 MAR 2022	3.5-2	24 FEB 2022
2.2-4	24 FEB 2022	3.6-1	19 MAY 2022
2.2-5	24 FEB 2022	3.6-2	24 FEB 2022
2.2-6	24 FEB 2022	3.6-3	24 FEB 2022
2.2-7	24 MAR 2022	3.6-4	24 FEB 2022
2.2-8	24 FEB 2022	3.6-5	11 AUG 2022
2.3-1	24 FEB 2022		
2.4-1	14 JUL 2022	GEN4	
2.4-2	24 MAR 2022	Not used	
2.4-3	24 FEB 2022		
2.5-1	24 FEB 2022		
2.5-2	24 FEB 2022		
2.5-3	11 AUG 2022		
2.5-4	24 FEB 2022		

PAGE	DATE	PAGE	DATE
ENR		ENR2	
ENR0		2.1-1	24 FEB 2022
0.1-1	24 FEB 2022	2.1-2	24 FEB 2022
0.1-2	24 MAR 2022	2.1-3	19 MAY 2022
0.1-3	24 FEB 2022	2.1-4	19 MAY 2022
		2.1-5	11 AUG 2022
ENR1		2.1-6	24 FEB 2022
1.1-1	24 FEB 2022	2.2-1	19 MAY 2022
1.1-2	24 MAR 2022	2.2-2	19 MAY 2022
1.1-3	24 FEB 2022	2.2-3	11 AUG 2022
1.1-4	21 APR 2022	2.3-1	24 MAR 2022
1.2-1	24 FEB 2022	2.3-2	24 MAR 2022
1.2-2	24 FEB 2022	2.3-3	11 AUG 2022
1.3-1	21 APR 2022	2.3-4	19 MAY 2022
1.4-1	24 FEB 2022	2.3-5	19 MAY 2022
1.4-2	24 MAR 2022	2.3-6	11 AUG 2022
1.5-1	21 APR 2022	2.3-7	11 AUG 2022
1.6-1	24 FEB 2022		
1.6-2	24 FEB 2022	ENR3	
1.7-1	24 FEB 2022	3.0-1	24 FEB 2022
1.7-2	24 FEB 2022	3.1-1	24 FEB 2022
1.7-3	11 AUG 2022	3.2-1	24 FEB 2022
1.8-1	24 FEB 2022	3.3-1	24 FEB 2022
1.9-1	24 FEB 2022	3.3-2	24 FEB 2022
1.9-2	19 MAY 2022	3.3-3	24 FEB 2022
1.9-3	24 FEB 2022	3.3-4	24 FEB 2022
1.9-4	11 AUG 2022	3.3-5	24 FEB 2022
1.9-5	11 AUG 2022	3.3-6	24 FEB 2022
1.9-6	11 AUG 2022	3.3-7	24 FEB 2022
1.10-1	24 FEB 2022	3.3-8	24 FEB 2022
1.10-2	24 FEB 2022	3.3-9	24 FEB 2022
1.10-3	24 FEB 2022	3.3-10	24 FEB 2022
1.10-4	24 FEB 2022	3.3-11	24 FEB 2022
1.10-5	24 FEB 2022	3.3-12	24 MAR 2022
1.10-6	24 FEB 2022	3.3-13	24 MAR 2022
1.10-7	24 FEB 2022	3.3-14	24 MAR 2022
1.10-8	24 FEB 2022	3.3-15	24 FEB 2022
1.10-9	24 FEB 2022	3.3-16	24 FEB 2022
1.10-10	24 FEB 2022	3.3-17	24 FEB 2022
1.10-11	24 FEB 2022	3.3-18	24 MAR 2022
1.10-12	24 FEB 2022	3.3-19	24 FEB 2022
1.10-13	24 FEB 2022	3.3-20	24 FEB 2022
1.10-14	24 FEB 2022	3.3-21	24 FEB 2022
1.10-15	24 FEB 2022	3.3-22	24 FEB 2022
1.10-16	24 FEB 2022	3.4-1	24 FEB 2022
1.10-17	24 FEB 2022	3.4-2	24 FEB 2022
1.10-18	24 FEB 2022	3.4-3	24 FEB 2022
1.10-19	24 FEB 2022	3.4-4	24 FEB 2022
1.10-20	24 FEB 2022		
1.11-1	19 MAY 2022		
1.11-2	24 FEB 2022		

PAGE	DATE	PAGE	DATE
3.4-5	24 FEB 2022	5.1-17	24 MAR 2022
3.4-6	24 FEB 2022	5.1-18	24 MAR 2022
3.4-7	24 FEB 2022	5.2-1	24 FEB 2022
3.4-8	24 FEB 2022	5.2-2	24 FEB 2022
3.4-9	24 FEB 2022	5.2-3	24 FEB 2022
3.4-10	24 FEB 2022	5.2-4	24 FEB 2022
3.4-11	24 FEB 2022	5.2-5	24 MAR 2022
3.4-12	24 FEB 2022	5.2-6	24 FEB 2022
3.4-13	11 AUG 2022	5.2-7	16 JUN 2022
3.4-14	24 MAR 2022	5.2-9	24 FEB 2022
3.5-1	24 FEB 2022	5.2-10	24 FEB 2022
3.5-2	16 JUN 2022	5.2-11	24 FEB 2022
3.6-1	24 FEB 2022	5.3-1	24 FEB 2022
		5.3-2	24 FEB 2022
		5.3-3	24 FEB 2022
ENR4		5.3-4	24 FEB 2022
4.1-1	19 MAY 2022	5.3-5	16 JUN 2022
4.1-2	24 FEB 2022	5.4-1	19 MAY 2022
4.2-1	24 FEB 2022	5.4-2	24 FEB 2022
4.3-1	24 FEB 2022	5.4-3	24 FEB 2022
4.4-1	24 FEB 2022	5.4-4	03 NOV 2022
4.4-2	24 FEB 2022	5.4-5	14 JUL 2022
4.4-3	24 FEB 2022	5.4-6	14 JUL 2022
4.4-4	24 FEB 2022	5.4-7	14 JUL 2022
4.4-5	24 FEB 2022	5.4-8	14 JUL 2022
4.4-6	24 FEB 2022	5.4-9	14 JUL 2022
4.4-7	03 NOV 2022	5.4-10	14 JUL 2022
4.4-8	24 FEB 2022	5.4-11	14 JUL 2022
4.4-9	24 FEB 2022	5.4-12	14 JUL 2022
4.4-10	24 MAR 2022	5.4-13	14 JUL 2022
4.4-11	24 FEB 2022	5.4-14	14 JUL 2022
4.4-12	24 FEB 2022	5.4-15	14 JUL 2022
4.5-1	24 FEB 2022	5.4-16	24 FEB 2022
		5.4-17	24 FEB 2022
ENR5		5.5-1	24 FEB 2022
5.1-1	24 FEB 2022	5.5-2	24 FEB 2022
5.1-2	24 FEB 2022	5.5-3	24 FEB 2022
5.1-3	24 FEB 2022	5.5-4	24 FEB 2022
5.1-4	03 NOV 2022	5.5-5	24 FEB 2022
5.1-5	03 NOV 2022	5.5-6	24 FEB 2022
5.1-6	24 FEB 2022	5.5-7	24 FEB 2022
5.1-7	24 FEB 2022	5.5-8	24 FEB 2022
5.1-8	24 FEB 2022	5.5-9	24 FEB 2022
5.1-9	24 MAR 2022	5.5-10	24 FEB 2022
5.1-10	24 FEB 2022	5.5-11	21 APR 2022
5.1-11	24 FEB 2022	5.6-1	24 FEB 2022
5.1-12	24 FEB 2022	5.6-2	24 FEB 2022
5.1-13	24 FEB 2022	5.6-3	24 MAR 2022
5.1-14	24 FEB 2022		
5.1-15	24 FEB 2022	ENR6	
5.1-16	24 FEB 2022	6.1-1	24 FEB 2022

PAGE	DATE	PAGE	DATE
AD		AD 2.1-7	19 MAY 2022
AD0		AD 2.1-8	24 FEB 2022
0.1-1	24 FEB 2022	AD 2.1-9	24 FEB 2022
0.1-2	24 FEB 2022	AD 2.1-10	24 FEB 2022
AD1		AD 2.1-11	24 FEB 2022
1.1-1	24 FEB 2022	ADC	19 MAY 2022
1.2-1	24 FEB 2022	AOC-A RWY 10L	24 FEB 2022
1.2-2	24 FEB 2022	AOC-A RWY 28R	24 FEB 2022
AD2		APDC	24 FEB 2022
2.0-1	24 FEB 2022	VAC	24 FEB 2022
2.0-2	24 FEB 2022	NAC	24 FEB 2022
2.0-3	24 FEB 2022	Glider Areas in TMA	19 MAY 2022
EKKA		ILS or LOC 10L	19 MAY 2022
AD 2.1-1	24 FEB 2022	ILS or LOC Z 10L	19 MAY 2022
AD 2.1-2	24 FEB 2022	HI-VORTAC 10L	19 MAY 2022
AD 2.1-3	24 FEB 2022	VORTAC 10L	19 MAY 2022
AD 2.1-4	24 FEB 2022	RNAV (GNSS) 10L	19 MAY 2022
AD 2.1-5	24 FEB 2022	WAYPOINT LIST 10L	24 FEB 2022
AD 2.1-6	24 FEB 2022	ILS or LOC 28R	19 MAY 2022
AD 2.1-7	19 MAY 2022	ILS or LOC Z 28R	19 MAY 2022
AD 2.1-8	24 FEB 2022	HI-VORTAC 28R	19 MAY 2022
AD 2.1-9	24 FEB 2022	VORTAC 28R	19 MAY 2022
AD 2.1-10	24 FEB 2022	RNAV (GNSS) 28R	19 MAY 2022
ADC	19 MAY 2022	WAYPOINT LIST 28R	24 FEB 2022
AOC-A 09R	24 FEB 2022	EKYT	
PATC 27L	24 FEB 2022	AD 2.1-1	24 FEB 2022
VAC	24 FEB 2022	AD 2.1-2	11 AUG 2022
Glider Areas in TMA	14 JUL 2022	AD 2.1-3	24 FEB 2022
ILS or LOC 09R	19 MAY 2022	AD 2.1-4	24 FEB 2022
COPTER ILS or LOC 09R	19 MAY 2022	AD 2.1-5	24 FEB 2022
HI-TACAN 09R	19 MAY 2022	AD 2.1-6	19 MAY 2022
RNAV (GNSS) 09R	19 MAY 2022	AD 2.1-7	19 MAY 2022
WAYPOINT LIST 09R	24 FEB 2022	AD 2.1-8	24 FEB 2022
ILS or LOC 27L	19 MAY 2022	AD 2.1-9	19 MAY 2022
COPTER ILS or LOC 27L	19 MAY 2022	ADC	14 JUL 2022
HI-TACAN 27L	19 MAY 2022	AOC-A 08L	24 FEB 2022
RNAV (GNSS) 27L	19 MAY 2022	PATC 26R	24 FEB 2022
WAYPOINT LIST 27L	24 FEB 2022	VAC	01 DEC 2022
EKSP		NAC	01 DEC 2022
AD 2.1-1	24 FEB 2022	VFR-08L	01 DEC 2022
AD 2.1-2	24 FEB 2022	VFR-26R	01 DEC 2022
AD 2.1-3	24 FEB 2022	ILS or LOC 08L (CAT A-B)	11 AUG 2022
AD 2.1-4	24 FEB 2022	ILS or LOC 08L (CAT C-E)	11 AUG 2022
AD 2.1-5	24 FEB 2022	HI-TACAN 08L	11 AUG 2022
AD 2.1-6	24 FEB 2022	TACAN 08L (CAT A-B)	11 AUG 2022
		TACAN 08L (CAT C-E)	11 AUG 2022
		RNAV (GNSS) 08L	11 AUG 2022
		WAYPOINT LIST 08L	24 FEB 2022

PAGE	DATE
ILS or LOC 26R (CAT A-B)	11 AUG 2022
ILS or LOC 26R (CAT C-E)	11 AUG 2022
HI-VORTAC 26R	11 AUG 2022
VORTAC 26R (CAT A-B)	11 AUG 2022
VORTAC 26R (CAT C-E)	11 AUG 2022
RNAV (GNSS) 26R	11 AUG 2022
WAYPOINT LIST 26R	24 FEB 2022

AD 3**BGNO**

AD 3.1-1	06 OCT 2022
AD 3.1-2	03 NOV 2022
AD 3.1-3	06 OCT 2022
AD 3.1-4	06 OCT 2022
AD 3.1-5	06 OCT 2022
ADC	06 OCT 2022
NDB RWY 19	01 DEC 2022
RNP RWY 19	06 OCT 2022
WP LIST RWY 19	06 OCT 2022

BGMV

AD 3.1-1	24 FEB 2022
AD 3.1-2	24 FEB 2022
AD 3.1-3	21 APR 2022
AD 3.1-4	06 OCT 2022
AD 3.1-5	24 FEB 2022
AD 3.1-6	24 FEB 2022
ADC	24 FEB 2022
RNAV (GNSS) 32	24 FEB 2022
WP LIST 32	21 APR 2022

CHARTS

LFC 1:500.000 Ed. 45	24 MAR 2022
ANC 1:250.000 CPH AREA	28 MAR 2019

INTENTIONALLY LEFT BLANK

GEN 2.7 Sunrise/Sunset Tables and Daily Periods for VFR Flights

1. Daily Periods for VFR Flights

1.1 In accordance with Civil Aviation Regulation BL 7-1 areas and daily periods within which VFR flights may take place over Denmark have been established.

1.2 Areas and Daily periods

Details about the areas and daily periods are given in the tables on the following pages.

The tables are valid from November 2022 to December 2023.

- Table 1 valid for the area west of 11° E including the island Læsø;
- Table 2 valid for the area East of 11°E with the exception of the islands Læsø, Bornholm and Ertholmene;
- Table 3 valid for the area over the islands Bornholm and Ertholmene;
- Table 4 valid for North Sea area west of 8° E.

Table 1
West of 11° E including the island of Læsø
Valid November 2022 to December 2023

MONTH/DAT	TWIL	SR	SS	TWIL	MONTH/DAT	TWIL	SR	SS	TWIL		
	FROM			TO		FROM			TO		
NOV	1	0551	0631	1542	1622	DEC	1	0646	0732	1453	1539
-	3	0555	0635	1538	1618	-	3	0649	0735	1451	1537
-	5	0559	0640	1534	1614	-	5	0652	0738	1450	1536
-	7	0603	0644	1530	1610	-	7	0654	0741	1448	1535
-	9	0607	0648	1526	1607	-	9	0657	0744	1448	1535
-	11	0611	0653	1522	1603	-	11	0659	0746	1447	1534
-	13	0615	0657	1518	1600	-	13	0701	0748	1447	1534
-	15	0618	0701	1514	1557	-	15	0703	0750	1446	1534
-	17	0622	0705	1511	1554	-	17	0704	0752	1447	1535
-	19	0626	0709	1508	1551	-	19	0706	0754	1447	1535
-	21	0629	0713	1505	1549	-	21	0707	0755	1448	1536
-	23	0633	0717	1502	1546	-	23	0708	0756	1449	1537
-	25	0636	0721	1459	1544	-	25	0709	0757	1451	1538
-	27	0640	0725	1457	1542	-	27	0709	0757	1452	1540
-	29	0643	0728	1455	1540	-	29	0709	0757	1454	1542
						-	31	0709	0757	1456	1544
JAN	1	0710	0757	1457	1544	FEB	2	0637	0718	1557	1638
-	3	0709	0756	1500	1547	-	4	0633	0714	1601	1642
-	5	0708	0755	1503	1550	-	6	0629	0710	1606	1647
-	7	0707	0754	1506	1553	-	8	0626	0706	1610	1650
-	9	0707	0753	1509	1555	-	10	0622	0702	1615	1655
-	11	0705	0751	1512	1558	-	12	0617	0657	1619	1659
-	13	0704	0749	1516	1601	-	14	0614	0653	1623	1702
-	15	0702	0747	1519	1604	-	16	0609	0648	1628	1707
-	17	0659	0744	1523	1608	-	18	0604	0643	1632	1711
-	19	0658	0742	1527	1611	-	20	0600	0639	1637	1716
-	21	0655	0739	1531	1615	-	22	0556	0634	1641	1719
-	23	0653	0736	1535	1618	-	24	0551	0629	1646	1724
-	25	0650	0733	1539	1622	-	26	0546	0624	1650	1728
-	27	0646	0729	1544	1627	-	28	0541	0619	1654	1732
-	29	0644	0726	1548	1630						
-	31	0640	0722	1552	1634						
MAR	2	0536	0614	1659	1737	APR	1	0417	0455	1801	1839
-	4	0532	0609	1703	1740	-	3	0410	0449	1806	1845
-	6	0527	0604	1707	1744	-	5	0405	0444	1810	1849
-	8	0521	0558	1711	1748	-	7	0400	0439	1814	1853
-	10	0516	0553	1716	1753	-	9	0355	0434	1818	1857
-	12	0511	0548	1720	1757	-	11	0349	0429	1822	1902
-	14	0506	0543	1724	1801	-	13	0343	0423	1826	1906
-	16	0500	0537	1728	1805	-	15	0337	0418	1830	1911
-	18	0455	0532	1732	1809	-	17	0332	0413	1834	1915
-	20	0450	0527	1737	1814	-	19	0326	0408	1839	1921
-	22	0444	0521	1741	1818	-	21	0321	0403	1843	1925
-	24	0438	0516	1745	1823	-	23	0315	0358	1847	1930
-	26	0433	0511	1749	1827	-	25	0310	0353	1851	1934
-	28	0427	0505	1753	1831	-	27	0305	0349	1855	1939
-	30	0422	0500	1757	1835	-	29	0300	0344	1859	1943

Table 1

MONTH/DAT	TWIL FROM	SR	SS	TWIL TO	MONTH/DAT	TWIL FROM	SR	SS	TWIL TO		
MAY	1	0254	0339	1903	1948	JUN	2	0144	0243	2001	2100
-	3	0249	0335	1907	1953	-	4	0141	0241	2004	2104
-	5	0243	0330	1912	1959	-	6	0138	0239	2006	2107
-	7	0239	0326	1916	2003	-	8	0136	0238	2008	2110
-	9	0234	0322	1920	2008	-	10	0134	0236	2010	2112
-	11	0229	0318	1923	2012	-	12	0132	0235	2012	2115
-	13	0224	0314	1927	2017	-	14	0132	0235	2013	2116
-	15	0219	0310	1931	2022	-	16	0130	0234	2014	2118
-	17	0214	0306	1935	2027	-	18	0130	0234	2015	2119
-	19	0210	0303	1939	2032	-	20	0130	0234	2016	2120
-	21	0206	0259	1942	2035	-	22	0131	0235	2016	2120
-	23	0202	0256	1946	2040	-	24	0131	0235	2016	2120
-	25	0158	0253	1949	2044	-	26	0132	0236	2016	2120
-	27	0154	0250	1952	2048	-	28	0133	0237	2016	2120
-	29	0150	0247	1955	2052	-	30	0136	0239	2015	2118
-	31	0147	0245	1958	2056						
JUL	2	0137	0240	2014	2117	AUG	1	0236	0325	1933	2022
-	4	0140	0242	2013	2115	-	3	0241	0329	1929	2017
-	6	0143	0244	2012	2113	-	5	0245	0333	1925	2013
-	8	0146	0246	2010	2110	-	7	0250	0337	1920	2007
-	10	0150	0249	2008	2107	-	9	0255	0341	1916	2002
-	12	0153	0252	2006	2105	-	11	0300	0345	1911	1956
-	14	0156	0254	2003	2101	-	13	0304	0349	1907	1952
-	16	0200	0257	2001	2058	-	15	0309	0353	1902	1946
-	18	0205	0301	1958	2054	-	17	0314	0357	1857	1940
-	20	0209	0304	1955	2050	-	19	0318	0401	1852	1935
-	22	0213	0307	1952	2046	-	21	0323	0405	1848	1930
-	24	0218	0311	1948	2041	-	23	0327	0409	1843	1925
-	26	0222	0314	1945	2037	-	25	0332	0413	1837	1918
-	28	0227	0318	1941	2032	-	27	0336	0417	1832	1913
-	30	0232	0322	1937	2027	-	29	0340	0420	1827	1907
						-	31	0344	0424	1822	1902
SEP	2	0348	0428	1817	1857	OCT	2	0451	0528	1657	1734
-	4	0353	0432	1812	1851	-	4	0455	0532	1652	1729
-	6	0357	0436	1806	1845	-	6	0459	0536	1646	1723
-	8	0401	0440	1801	1840	-	8	0503	0540	1641	1718
-	10	0406	0444	1756	1834	-	10	0506	0544	1636	1714
-	12	0410	0448	1750	1828	-	12	0510	0548	1631	1709
-	14	0414	0452	1745	1823	-	14	0514	0552	1626	1704
-	16	0418	0456	1740	1818	-	16	0519	0557	1621	1659
-	18	0422	0500	1734	1812	-	18	0523	0601	1616	1654
-	20	0426	0504	1729	1807	-	20	0527	0605	1611	1649
-	22	0431	0508	1724	1801	-	22	0530	0609	1606	1645
-	24	0435	0512	1718	1755	-	24	0535	0614	1601	1640
-	26	0439	0516	1713	1750	-	26	0539	0618	1556	1635
-	28	0443	0520	1707	1744	-	28	0543	0622	1552	1631
-	30	0447	0524	1702	1739	-	30	0546	0626	1547	1627

Table 1

MONTH/DAT	TWIL	SR	SS	TWIL	MONTH/DAT	TWIL	SR	SS	TWIL		
	FROM			TO		FROM			TO		
NOV	1	0551	0631	1543	1623	DEC	1	0645	0731	1453	1539
-	3	0555	0635	1538	1618	-	3	0649	0735	1451	1537
-	5	0558	0639	1534	1615	-	5	0651	0738	1450	1537
-	7	0603	0644	1530	1611	-	7	0654	0741	1448	1535
-	9	0607	0648	1526	1607	-	9	0657	0744	1448	1535
-	11	0610	0652	1522	1604	-	11	0659	0746	1447	1534
-	13	0614	0656	1518	1600	-	13	0700	0748	1446	1534
-	15	0618	0701	1515	1558	-	15	0702	0750	1446	1534
-	17	0622	0705	1511	1554	-	17	0704	0752	1447	1535
-	19	0626	0709	1508	1551	-	19	0706	0754	1447	1535
-	21	0629	0713	1505	1549	-	21	0707	0755	1448	1536
-	23	0633	0717	1502	1546	-	23	0708	0756	1449	1537
-	25	0636	0721	1500	1545	-	25	0709	0757	1450	1538
-	27	0639	0724	1457	1542	-	27	0709	0757	1452	1540
-	29	0643	0728	1455	1540	-	29	0709	0757	1454	1542
						-	31	0709	0757	1456	1544

Table 2

East of 11o E with the exception of the islands Læsø, Bornholm and Ertholmene
Valid November 2022 to December 2023

MONTH/DAT	TWIL	SR	SS	TWIL	MONTH/DAT	TWIL	SR	SS	TWIL		
	FROM			TO		FROM			TO		
NOV	1	0536	0615	1530	1609	DEC	1	0629	0714	1443	1527
-	3	0539	0619	1526	1606	-	3	0632	0717	1441	1526
-	5	0543	0623	1522	1602	-	5	0634	0720	1440	1525
-	7	0547	0627	1518	1558	-	7	0637	0723	1439	1524
-	9	0551	0631	1514	1555	-	9	0639	0725	1438	1524
-	11	0555	0636	1510	1551	-	11	0642	0728	1437	1523
-	13	0558	0640	1507	1548	-	13	0644	0730	1437	1523
-	15	0602	0644	1503	1545	-	15	0645	0732	1437	1523
-	17	0606	0648	1500	1542	-	17	0647	0733	1437	1524
-	19	0609	0652	1457	1540	-	19	0648	0735	1438	1524
-	21	0613	0656	1454	1537	-	21	0650	0736	1439	1525
-	23	0616	0659	1452	1535	-	23	0651	0737	1440	1526
-	25	0620	0703	1449	1533	-	25	0651	0738	1441	1527
-	27	0623	0707	1447	1531	-	27	0652	0738	1443	1529
-	29	0626	0710	1445	1529	-	29	0652	0738	1445	1531
						-	31	0652	0738	1447	1533

Table 2

MONTH/DAT	TWIL FROM	SR	SS	TWIL TO	MONTH/DAT	TWIL FROM	SR	SS	TWIL TO		
JAN	1	0652	0738	1448	1534	FEB	2	0621	0701	1545	1625
-	3	0652	0738	1450	1536	-	4	0617	0657	1550	1630
-	5	0651	0737	1453	1539	-	6	0614	0654	1554	1634
-	7	0651	0736	1456	1541	-	8	0610	0649	1558	1637
-	9	0649	0734	1459	1544	-	10	0606	0645	1603	1642
-	11	0648	0733	1502	1547	-	12	0602	0641	1607	1646
-	13	0647	0731	1505	1549	-	14	0558	0637	1611	1650
-	15	0645	0729	1509	1553	-	16	0554	0632	1616	1654
-	17	0642	0726	1513	1557	-	18	0549	0627	1620	1658
-	19	0641	0724	1517	1600	-	20	0545	0623	1624	1702
-	21	0638	0721	1520	1603	-	22	0540	0618	1629	1707
-	23	0636	0718	1524	1606	-	24	0536	0613	1633	1710
-	25	0633	0715	1529	1611	-	26	0532	0609	1637	1714
-	27	0630	0712	1533	1615	-	28	0527	0604	1641	1718
-	29	0628	0709	1537	1618						
-	31	0624	0705	1541	1622						
MAR	2	0522	0559	1645	1722	APR	1	0403	0441	1746	1824
-	4	0517	0554	1650	1727	-	3	0358	0436	1750	1828
-	6	0512	0549	1654	1731	-	5	0353	0431	1754	1832
-	8	0507	0544	1658	1735	-	7	0348	0426	1758	1836
-	10	0501	0538	1702	1739	-	9	0342	0421	1802	1841
-	12	0456	0533	1706	1743	-	11	0337	0416	1806	1845
-	14	0451	0528	1710	1747	-	13	0332	0411	1810	1849
-	16	0446	0523	1714	1751	-	15	0326	0406	1814	1854
-	18	0441	0518	1718	1755	-	17	0321	0401	1819	1859
-	20	0436	0513	1722	1759	-	19	0315	0356	1823	1904
-	22	0430	0507	1726	1803	-	21	0310	0351	1827	1908
-	24	0425	0502	1730	1807	-	23	0304	0346	1831	1913
-	26	0420	0457	1734	1811	-	25	0300	0342	1835	1917
-	28	0415	0452	1738	1815	-	27	0254	0337	1839	1922
-	30	0410	0447	1742	1819	-	29	0249	0332	1843	1926
MAY	1	0244	0328	1847	1931	JUN	2	0136	0233	1942	2039
-	3	0238	0323	1850	1935	-	4	0135	0232	1945	2042
-	5	0234	0319	1854	1939	-	6	0132	0230	1947	2045
-	7	0229	0315	1858	1944	-	8	0129	0228	1949	2048
-	9	0224	0311	1902	1949	-	10	0128	0227	1951	2050
-	11	0220	0307	1906	1953	-	12	0126	0226	1952	2052
-	13	0215	0303	1910	1958	-	14	0126	0226	1954	2054
-	15	0210	0259	1913	2002	-	16	0124	0225	1955	2056
-	17	0206	0256	1917	2007	-	18	0124	0225	1956	2057
-	19	0201	0252	1921	2012	-	20	0124	0225	1957	2058
-	21	0157	0249	1924	2016	-	22	0125	0226	1957	2058
-	23	0154	0246	1927	2019	-	24	0125	0226	1957	2058
-	25	0150	0243	1931	2024	-	26	0126	0227	1957	2058
-	27	0146	0240	1934	2028	-	28	0128	0228	1957	2057
-	29	0143	0238	1937	2032	-	30	0130	0230	1956	2056
-	31	0139	0235	1939	2035						

Table 2

MONTH/DAT		TWIL	SR	SS	TWIL	MONTH/DAT		TWIL	SR	SS	TWIL
		FROM			TO			FROM			TO
JUL	2	0132	0231	1955	2054	AUG	1	0227	0315	1916	2004
-	4	0134	0233	1954	2053	-	3	0231	0318	1912	1959
-	6	0137	0235	1953	2051	-	5	0236	0322	1908	1954
-	8	0139	0237	1951	2049	-	7	0241	0326	1903	1948
-	10	0143	0240	1949	2046	-	9	0245	0330	1859	1944
-	12	0146	0242	1947	2043	-	11	0249	0333	1855	1939
-	14	0150	0245	1945	2040	-	13	0254	0337	1850	1933
-	16	0154	0248	1942	2036	-	15	0258	0341	1846	1929
-	18	0158	0251	1939	2032	-	17	0303	0345	1841	1923
-	20	0201	0254	1937	2030	-	19	0307	0349	1836	1918
-	22	0205	0257	1933	2025	-	21	0312	0353	1831	1912
-	24	0209	0300	1930	2021	-	23	0315	0356	1826	1907
-	26	0214	0304	1927	2017	-	25	0320	0400	1822	1902
-	28	0218	0307	1923	2012	-	27	0324	0404	1817	1857
-	30	0223	0311	1920	2008	-	29	0328	0408	1812	1852
						-	31	0333	0412	1806	1845
SEP	2	0337	0416	1801	1840	OCT	2	0436	0513	1643	1720
-	4	0340	0419	1756	1835	-	4	0440	0517	1638	1715
-	6	0345	0423	1751	1829	-	6	0444	0521	1633	1710
-	8	0349	0427	1746	1824	-	8	0448	0525	1628	1705
-	10	0353	0431	1741	1819	-	10	0452	0529	1623	1700
-	12	0357	0435	1735	1813	-	12	0456	0533	1618	1655
-	14	0402	0439	1730	1807	-	14	0500	0537	1613	1650
-	16	0405	0442	1725	1802	-	16	0504	0541	1608	1645
-	18	0409	0446	1720	1757	-	18	0508	0545	1603	1640
-	20	0413	0450	1715	1752	-	20	0511	0549	1558	1636
-	22	0417	0454	1709	1746	-	22	0515	0553	1553	1631
-	24	0421	0458	1704	1741	-	24	0520	0558	1549	1627
-	26	0425	0502	1659	1736	-	26	0524	0602	1544	1622
-	28	0429	0506	1654	1731	-	28	0527	0606	1540	1619
-	30	0432	0509	1648	1725	-	30	0531	0610	1535	1614
NOV	1	0535	0614	1531	1610	DEC	1	0628	0713	1443	1528
-	3	0539	0618	1527	1606	-	3	0631	0716	1441	1526
-	5	0543	0623	1522	1602	-	5	0635	0720	1440	1525
-	7	0547	0627	1518	1558	-	7	0636	0722	1439	1525
-	9	0550	0631	1515	1556	-	9	0639	0725	1438	1524
-	11	0554	0635	1511	1552	-	11	0642	0728	1437	1523
-	13	0558	0639	1507	1548	-	13	0644	0730	1437	1523
-	15	0601	0643	1504	1546	-	15	0646	0732	1437	1523
-	17	0605	0647	1501	1543	-	17	0646	0733	1437	1524
-	19	0609	0651	1457	1539	-	19	0648	0735	1438	1525
-	21	0612	0655	1454	1537	-	21	0649	0736	1438	1525
-	23	0616	0659	1452	1535	-	23	0650	0737	1439	1526
-	25	0619	0703	1449	1533	-	25	0651	0738	1441	1528
-	27	0622	0706	1447	1531	-	27	0651	0738	1442	1529
-	29	0626	0710	1445	1529	-	29	0652	0738	1444	1530
						-	31	0652	0738	1446	1532

Table 3
The islands Bornholm and Ertholmene
Valid November 2022 to December 2023

MONTH/DAT	TWIL FROM	SR	SS	TWIL TO	MONTH/DAT	TWIL FROM	SR	SS	TWIL TO		
NOV	1	0526	0604	1524	1602	DEC	1	0618	0702	1438	1521
-	3	0530	0609	1520	1558	-	3	0621	0705	1436	1520
-	5	0534	0613	1516	1555	-	5	0624	0708	1435	1519
-	7	0537	0617	1512	1551	-	7	0626	0711	1434	1518
-	9	0541	0621	1508	1548	-	9	0629	0713	1433	1518
-	11	0545	0625	1504	1545	-	11	0631	0716	1432	1517
-	13	0548	0629	1501	1541	-	13	0633	0718	1432	1517
-	15	0552	0633	1458	1538	-	15	0634	0720	1432	1517
-	17	0555	0637	1454	1536	-	17	0636	0721	1432	1518
-	19	0559	0641	1451	1533	-	19	0637	0723	1433	1518
-	21	0602	0644	1449	1531	-	21	0639	0724	1434	1519
-	23	0606	0648	1446	1528	-	23	0640	0725	1435	1520
-	25	0609	0652	1444	1526	-	25	0640	0726	1436	1522
-	27	0612	0655	1441	1524	-	27	0641	0726	1438	1523
-	29	0615	0659	1439	1523	-	29	0641	0726	1440	1525
						-	31	0641	0726	1442	1527
JAN	1	0641	0726	1443	1528	FEB	2	0611	0651	1539	1619
-	3	0641	0726	1445	1530	-	4	0608	0647	1543	1622
-	5	0640	0725	1448	1533	-	6	0604	0643	1548	1627
-	7	0640	0724	1451	1535	-	8	0600	0639	1552	1631
-	9	0639	0723	1454	1538	-	10	0556	0635	1556	1635
-	11	0637	0721	1457	1541	-	12	0553	0631	1600	1638
-	13	0636	0719	1500	1543	-	14	0549	0627	1604	1642
-	15	0634	0717	1504	1547	-	16	0544	0622	1609	1647
-	17	0632	0715	1507	1550	-	18	0541	0618	1613	1650
-	19	0631	0713	1511	1553	-	20	0536	0613	1617	1654
-	21	0628	0710	1515	1557	-	22	0532	0609	1621	1658
-	23	0625	0707	1519	1601	-	24	0527	0604	1625	1702
-	25	0623	0704	1523	1604	-	26	0522	0559	1630	1707
-	27	0620	0701	1527	1608	-	28	0517	0554	1634	1711
-	29	0617	0658	1531	1612						
-	31	0614	0654	1535	1615						
MAR	2	0513	0549	1638	1714	APR	1	0357	0434	1737	1814
-	4	0509	0545	1642	1718	-	3	0352	0429	1741	1818
-	6	0504	0540	1646	1722	-	5	0346	0424	1745	1823
-	8	0459	0535	1650	1726	-	7	0340	0418	1749	1827
-	10	0454	0530	1654	1730	-	9	0335	0413	1753	1831
-	12	0449	0525	1658	1734	-	11	0331	0409	1757	1835
-	14	0444	0520	1702	1738	-	13	0325	0404	1801	1840
-	16	0438	0514	1706	1742	-	15	0320	0359	1805	1844
-	18	0433	0509	1710	1746	-	17	0315	0354	1809	1848
-	20	0428	0504	1714	1750	-	19	0309	0349	1813	1853
-	22	0423	0459	1718	1754	-	21	0304	0344	1816	1856
-	24	0418	0454	1722	1758	-	23	0259	0340	1820	1901
-	26	0412	0449	1726	1803	-	25	0254	0335	1824	1905
-	28	0407	0444	1730	1807	-	27	0248	0330	1828	1910
-	30	0402	0439	1733	1810	-	29	0244	0326	1832	1914

Table 3

MONTH/DAT	TWIL FROM	SR	SS	TWIL TO	MONTH/DAT	TWIL FROM	SR	SS	TWIL TO		
MAY	1	0239	0322	1836	1919	JUN	2	0134	0229	1930	2025
-	3	0233	0317	1840	1924	-	4	0132	0227	1932	2027
-	5	0229	0313	1844	1928	-	6	0129	0225	1935	2031
-	7	0224	0309	1847	1932	-	8	0127	0224	1937	2034
-	9	0219	0305	1851	1937	-	10	0126	0223	1938	2035
-	11	0215	0301	1855	1941	-	12	0124	0222	1940	2038
-	13	0210	0257	1858	1945	-	14	0123	0221	1941	2039
-	15	0206	0254	1902	1950	-	16	0123	0221	1943	2041
-	17	0201	0250	1906	1955	-	18	0123	0221	1943	2041
-	19	0158	0247	1909	1958	-	20	0122	0221	1944	2043
-	21	0154	0244	1912	2002	-	22	0122	0221	1945	2044
-	23	0150	0241	1916	2007	-	24	0124	0222	1945	2043
-	25	0146	0238	1919	2011	-	26	0125	0223	1945	2043
-	27	0143	0235	1922	2014	-	28	0126	0224	1944	2042
-	29	0140	0233	1925	2018	-	30	0127	0225	1944	2042
-	31	0137	0231	1927	2021						
JUL	2	0130	0227	1943	2040	AUG	1	0222	0309	1905	1952
-	4	0131	0228	1942	2039	-	3	0226	0312	1901	1947
-	6	0134	0230	1940	2036	-	5	0231	0316	1857	1942
-	8	0137	0233	1939	2035	-	7	0236	0320	1853	1937
-	10	0140	0235	1937	2032	-	9	0239	0323	1848	1932
-	12	0143	0237	1935	2029	-	11	0244	0327	1844	1927
-	14	0147	0240	1933	2026	-	13	0248	0331	1840	1923
-	16	0150	0243	1930	2023	-	15	0253	0335	1835	1917
-	18	0154	0246	1928	2020	-	17	0256	0338	1831	1913
-	20	0158	0249	1925	2016	-	19	0301	0342	1826	1907
-	22	0202	0252	1922	2012	-	21	0305	0346	1821	1902
-	24	0205	0255	1919	2009	-	23	0310	0350	1817	1857
-	26	0209	0258	1915	2004	-	25	0313	0353	1812	1852
-	28	0214	0302	1912	2000	-	27	0318	0357	1807	1846
-	30	0218	0305	1908	1955	-	29	0322	0401	1802	1841
						-	31	0326	0405	1757	1836
SEP	2	0330	0408	1752	1830	OCT	2	0429	0505	1635	1711
-	4	0334	0412	1747	1825	-	4	0432	0508	1630	1706
-	6	0338	0416	1742	1820	-	6	0436	0512	1625	1701
-	8	0342	0419	1737	1814	-	8	0440	0516	1620	1656
-	10	0346	0423	1732	1809	-	10	0444	0520	1615	1651
-	12	0350	0427	1727	1804	-	12	0448	0524	1610	1646
-	14	0354	0431	1721	1758	-	14	0451	0528	1605	1642
-	16	0357	0434	1716	1753	-	16	0455	0532	1600	1637
-	18	0402	0438	1711	1747	-	18	0459	0536	1556	1633
-	20	0406	0442	1706	1742	-	20	0503	0540	1551	1628
-	22	0410	0446	1701	1737	-	22	0507	0544	1546	1623
-	24	0413	0449	1656	1732	-	24	0510	0548	1542	1620
-	26	0417	0453	1650	1726	-	26	0514	0552	1537	1615
-	28	0421	0457	1645	1721	-	28	0518	0556	1533	1611
-	30	0425	0501	1640	1716	-	30	0522	0600	1528	1606

Table 3

MONTH/DAT	TWIL FROM	SR	SS	TWIL TO	MONTH/DAT	TWIL FROM	SR	SS	TWIL TO		
NOV	1	0525	0604	1524	1603	DEC	1	0618	0702	1438	1522
-	3	0529	0608	1520	1559	-	3	0621	0705	1436	1520
-	5	0533	0612	1516	1555	-	5	0624	0708	1435	1519
-	7	0537	0616	1512	1551	-	7	0626	0711	1434	1519
-	9	0540	0620	1508	1548	-	9	0628	0713	1433	1518
-	11	0544	0624	1505	1545	-	11	0631	0716	1432	1517
-	13	0547	0628	1501	1542	-	13	0633	0718	1432	1517
-	15	0551	0632	1458	1539	-	15	0635	0720	1432	1517
-	17	0555	0636	1455	1536	-	17	0636	0722	1432	1518
-	19	0558	0640	1452	1534	-	19	0637	0723	1433	1519
-	21	0602	0644	1449	1531	-	21	0638	0724	1434	1520
-	23	0606	0648	1446	1528	-	23	0639	0725	1435	1521
-	25	0608	0651	1444	1527	-	25	0640	0726	1436	1522
-	27	0612	0655	1441	1524	-	27	0640	0726	1437	1523
-	29	0615	0658	1439	1522	-	29	0642	0727	1439	1524
						-	31	0641	0726	1441	1526

Table 4
North Sea Area west of 8° E
Valid November 2022 to December 2023

MONTH/DAT	TWIL FROM	SR	SS	TWIL TO	MONTH/DAT	TWIL FROM	SR	SS	TWIL TO		
NOV	1	0607	0646	1601	1641	DEC	1	0701	0746	1514	1558
-	3	0611	0651	1557	1637	-	3	0704	0749	1512	1557
-	5	0615	0655	1553	1633	-	5	0706	0752	1511	1556
-	7	0619	0659	1549	1629	-	7	0709	0755	1509	1555
-	9	0623	0703	1545	1626	-	9	0711	0757	1509	1555
-	11	0626	0707	1541	1622	-	11	0714	0800	1508	1554
-	13	0630	0712	1538	1619	-	13	0716	0802	1508	1554
-	15	0634	0716	1534	1616	-	15	0717	0804	1508	1554
-	17	0638	0720	1531	1613	-	17	0719	0806	1508	1555
-	19	0641	0724	1528	1611	-	19	0720	0807	1508	1555
-	21	0645	0728	1525	1608	-	21	0722	0808	1509	1556
-	23	0648	0731	1522	1606	-	23	0722	0809	1510	1557
-	25	0651	0735	1520	1604	-	25	0723	0810	1512	1558
-	27	0655	0739	1518	1602	-	27	0724	0810	1513	1600
-	29	0658	0742	1515	1600	-	29	0724	0810	1515	1602
						-	31	0724	0810	1517	1604

Table 4

MONTH/DAT	TWIL FROM	SR	SS	TWIL TO	MONTH/DAT	TWIL FROM	SR	SS	TWIL TO		
JAN	1	0724	0810	1518	1604	FEB	2	0652	0733	1616	1657
-	3	0724	0810	1521	1607	-	4	0649	0729	1621	1701
-	5	0723	0809	1524	1610	-	6	0645	0725	1625	1705
-	7	0722	0808	1527	1613	-	8	0641	0721	1629	1709
-	9	0721	0806	1530	1615	-	10	0638	0717	1634	1713
-	11	0720	0805	1533	1618	-	12	0634	0713	1638	1717
-	13	0718	0803	1536	1621	-	14	0629	0708	1642	1721
-	15	0717	0801	1540	1624	-	16	0626	0704	1647	1725
-	17	0714	0758	1544	1628	-	18	0621	0659	1651	1729
-	19	0713	0756	1547	1630	-	20	0616	0654	1655	1733
-	21	0710	0753	1551	1634	-	22	0612	0650	1700	1738
-	23	0707	0750	1555	1638	-	24	0608	0645	1704	1741
-	25	0705	0747	1600	1642	-	26	0603	0640	1708	1745
-	27	0702	0744	1604	1646	-	28	0558	0635	1713	1750
-	29	0659	0740	1608	1649						
-	31	0656	0737	1612	1653						
MAR	2	0553	0630	1717	1754	APR	1	0435	0513	1818	1856
-	4	0548	0625	1721	1758	-	3	0429	0507	1822	1900
-	6	0543	0620	1725	1802	-	5	0424	0502	1826	1904
-	8	0538	0615	1729	1806	-	7	0419	0457	1830	1908
-	10	0533	0610	1733	1810	-	9	0413	0452	1834	1913
-	12	0528	0605	1737	1814	-	11	0408	0447	1838	1917
-	14	0523	0600	1742	1819	-	13	0403	0442	1842	1921
-	16	0517	0554	1746	1823	-	15	0357	0437	1846	1926
-	18	0512	0549	1750	1827	-	17	0352	0432	1850	1930
-	20	0507	0544	1754	1831	-	19	0346	0427	1854	1935
-	22	0502	0539	1758	1835	-	21	0341	0422	1858	1939
-	24	0457	0534	1802	1839	-	23	0335	0417	1902	1944
-	26	0451	0528	1806	1843	-	25	0331	0413	1906	1948
-	28	0446	0523	1810	1847	-	27	0325	0408	1910	1953
-	30	0440	0518	1814	1852	-	29	0320	0403	1914	1957
MAY	1	0315	0359	1918	2002	JUN	2	0207	0304	2014	2111
-	3	0309	0354	1922	2007	-	4	0204	0302	2017	2115
-	5	0305	0350	1926	2011	-	6	0203	0301	2019	2117
-	7	0300	0346	1930	2016	-	8	0200	0259	2021	2120
-	9	0255	0342	1934	2021	-	10	0158	0258	2023	2123
-	11	0250	0338	1938	2026	-	12	0157	0257	2025	2125
-	13	0246	0334	1942	2030	-	14	0155	0256	2026	2127
-	15	0241	0330	1945	2034	-	16	0155	0256	2027	2128
-	17	0237	0327	1949	2039	-	18	0155	0256	2028	2129
-	19	0232	0323	1953	2044	-	20	0155	0256	2029	2130
-	21	0228	0320	1956	2048	-	22	0155	0256	2029	2130
-	23	0224	0317	1959	2052	-	24	0156	0257	2029	2130
-	25	0220	0314	2003	2057	-	26	0157	0258	2029	2130
-	27	0217	0311	2006	2100	-	28	0158	0259	2029	2130
-	29	0214	0309	2009	2104	-	30	0200	0300	2028	2128
-	31	0210	0306	2012	2108						

Table 4

MONTH/DAT	TWIL FROM	SR	SS	TWIL TO	MONTH/DAT	TWIL FROM	SR	SS	TWIL TO		
JUL	2	0202	0302	2027	2127	AUG	1	0258	0346	1948	2036
-	4	0205	0304	2026	2125	-	3	0302	0349	1944	2031
-	6	0207	0306	2025	2124	-	5	0307	0353	1939	2025
-	8	0210	0308	2023	2121	-	7	0311	0357	1935	2021
-	10	0213	0310	2021	2118	-	9	0316	0401	1931	2016
-	12	0217	0313	2019	2115	-	11	0320	0404	1926	2010
-	14	0221	0316	2017	2112	-	13	0324	0408	1922	2006
-	16	0224	0319	2014	2109	-	15	0329	0412	1917	2000
-	18	0228	0322	2011	2105	-	17	0334	0416	1913	1955
-	20	0232	0325	2009	2102	-	19	0338	0420	1908	1950
-	22	0236	0328	2005	2057	-	21	0343	0424	1903	1944
-	24	0240	0331	2002	2053	-	23	0347	0428	1858	1939
-	26	0245	0335	1959	2049	-	25	0351	0431	1853	1933
-	28	0249	0338	1955	2044	-	27	0355	0435	1848	1928
-	30	0253	0342	1951	2040	-	29	0359	0439	1843	1923
						-	31	0404	0443	1838	1917
SEP	2	0408	0447	1833	1912	OCT	2	0508	0545	1714	1751
-	4	0412	0451	1828	1907	-	4	0512	0549	1709	1746
-	6	0417	0455	1823	1901	-	6	0516	0553	1704	1741
-	8	0420	0458	1817	1855	-	8	0520	0557	1659	1736
-	10	0424	0502	1812	1850	-	10	0524	0601	1654	1731
-	12	0428	0506	1807	1845	-	12	0528	0605	1649	1726
-	14	0433	0510	1802	1839	-	14	0532	0609	1644	1721
-	16	0437	0514	1756	1833	-	16	0536	0613	1639	1716
-	18	0441	0518	1751	1828	-	18	0539	0617	1634	1712
-	20	0445	0522	1746	1823	-	20	0543	0621	1629	1707
-	22	0448	0525	1741	1818	-	22	0547	0625	1624	1702
-	24	0452	0529	1735	1812	-	24	0551	0629	1620	1658
-	26	0456	0533	1730	1807	-	26	0555	0633	1615	1653
-	28	0500	0537	1725	1802	-	28	0559	0638	1611	1650
-	30	0504	0541	1720	1757	-	30	0603	0642	1606	1645
NOV	1	0607	0646	1602	1641	DEC	1	0700	0745	1514	1559
-	3	0610	0650	1558	1638	-	3	0704	0749	1512	1557
-	5	0614	0654	1553	1633	-	5	0706	0752	1511	1557
-	7	0619	0659	1549	1629	-	7	0708	0754	1509	1555
-	9	0622	0703	1546	1627	-	9	0711	0757	1509	1555
-	11	0626	0707	1542	1623	-	11	0714	0800	1508	1554
-	13	0630	0711	1538	1619	-	13	0715	0802	1508	1555
-	15	0633	0715	1535	1617	-	15	0717	0804	1508	1555
-	17	0637	0719	1531	1613	-	17	0719	0806	1508	1555
-	19	0640	0723	1528	1611	-	19	0720	0807	1508	1555
-	21	0644	0727	1525	1608	-	21	0721	0808	1509	1556
-	23	0648	0731	1523	1606	-	23	0722	0809	1510	1557
-	25	0651	0735	1520	1604	-	25	0723	0810	1511	1558
-	27	0654	0738	1518	1602	-	27	0723	0810	1513	1600
-	29	0657	0742	1516	1601	-	29	0724	0811	1515	1602
						-	31	0724	0810	1517	1603

BLANK

ATC clearance for VFR traffic will normally be issued via the routes indicated.

Arriving VFR traffic may be requested to hold at one of the holding patterns indicated.

▲ Reporting point for arriving VFR traffic.
- - - - - VFR route.

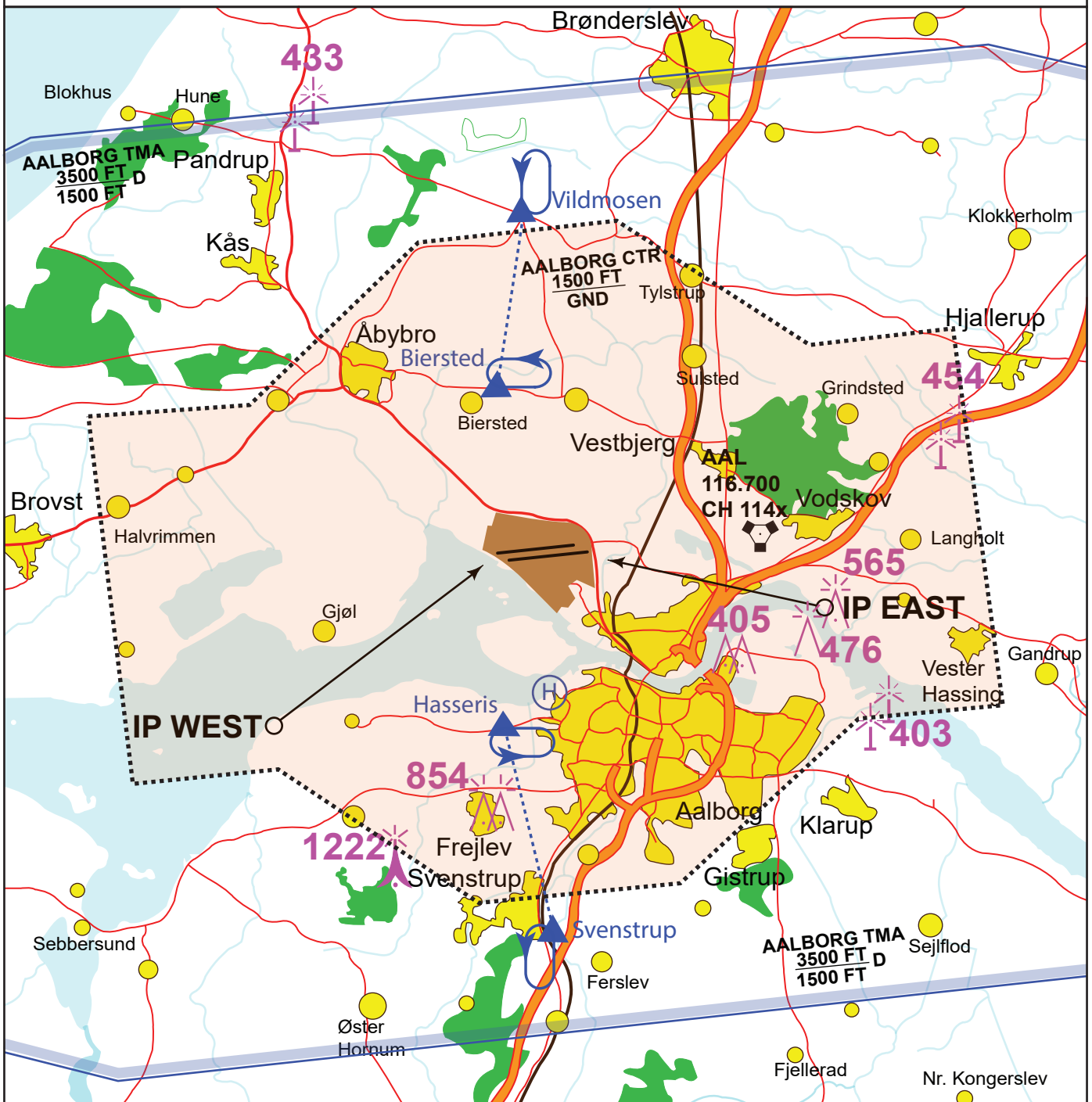
IP East (RWY 26):

57 04.2N 010 02.3E / AAL R-143 2.5 NM
Right hand break only to RWY 26R and 26L

IP West (RWY 08)

57 01.7N 009 40.4E / AAL R-246 11.4 NM.
Left hand break only to RWY 08L and 08R

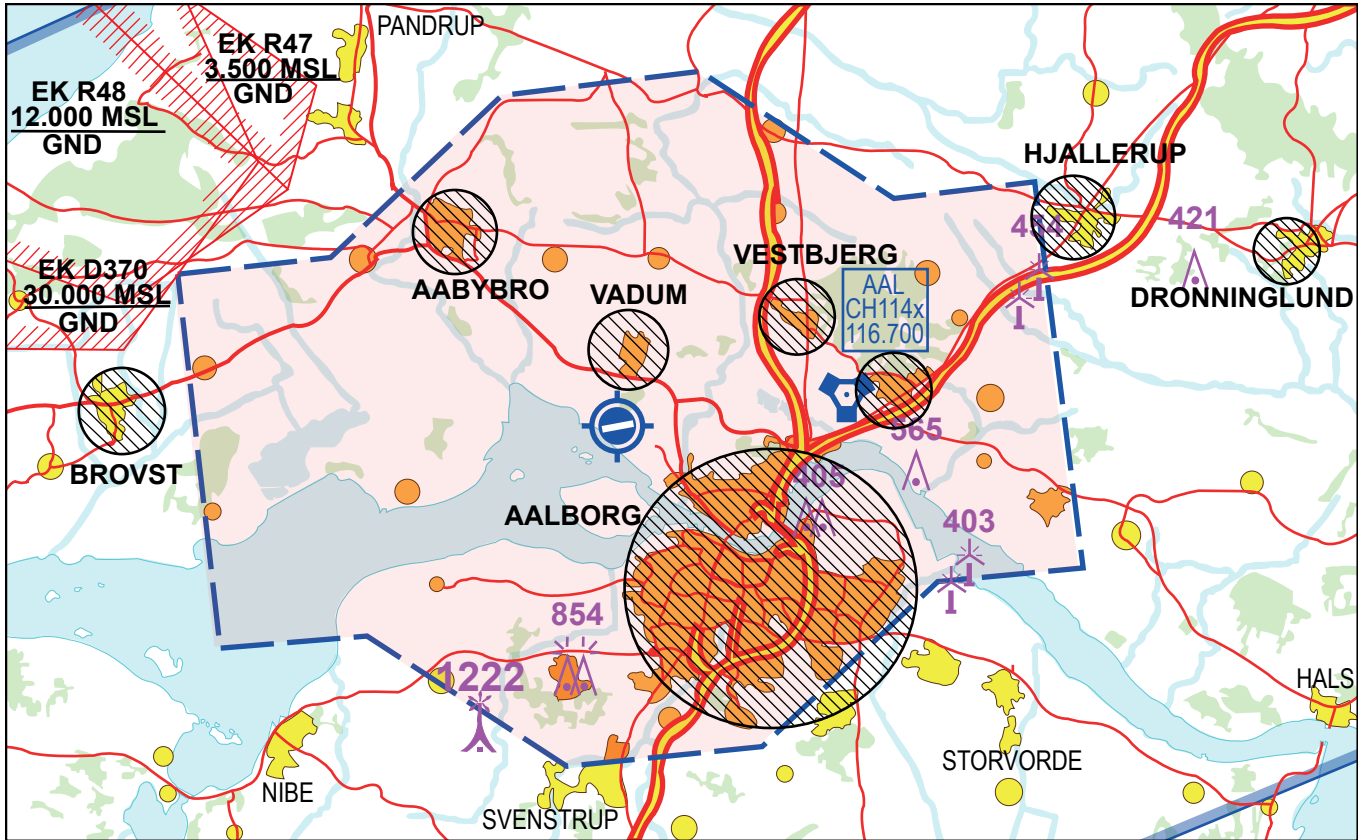
Note; Rejoin procedures to IP is a turn to the south to re-enter the traffic pattern via IP.
Avoid overflying areas described on Noise abatement chart (EKYT NAC).



CHANGES: GL NDB REMOVED, TEXT UPDATED, EDITORIAL.

BLANK

Noise Abatement Chart

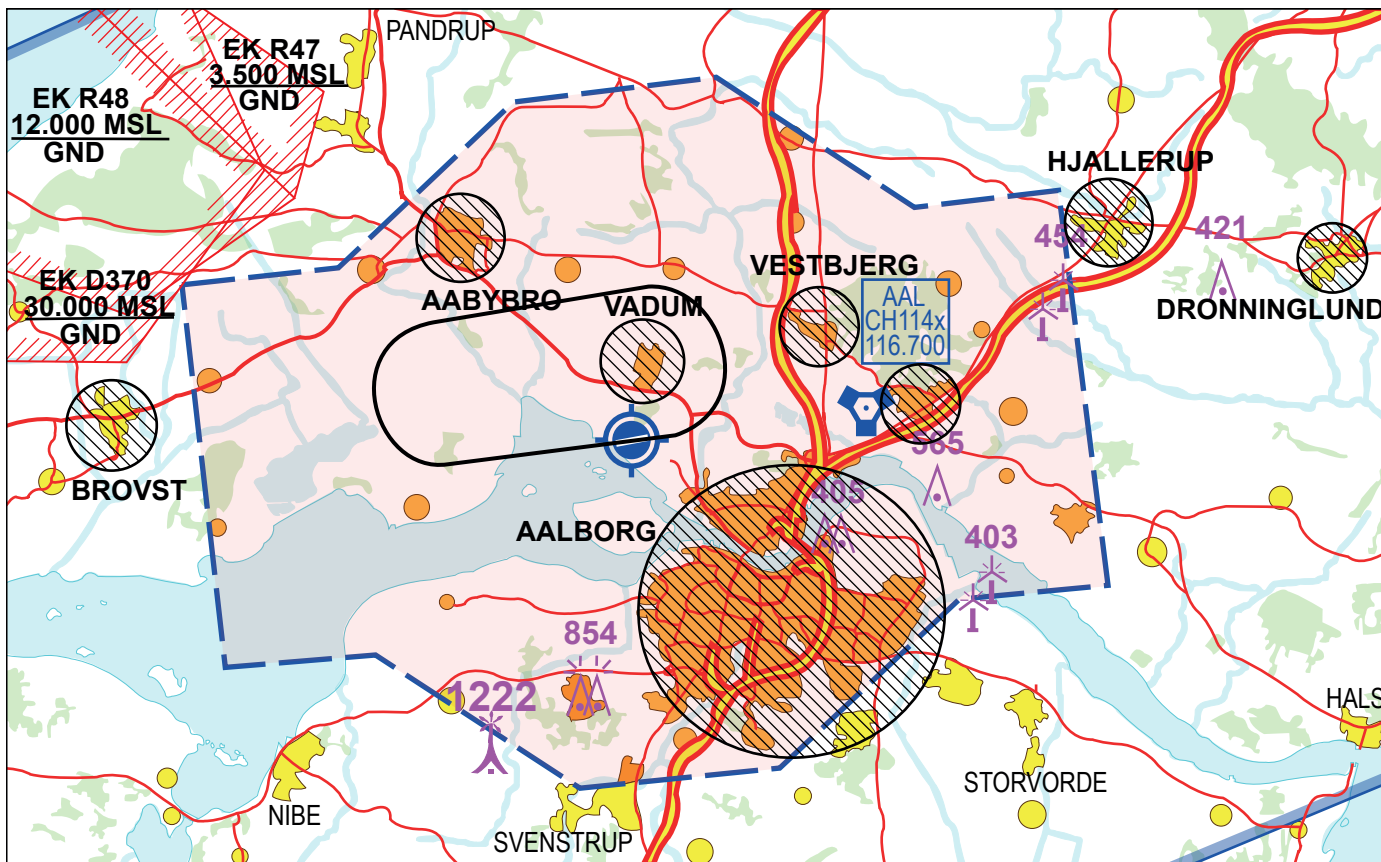


The hatched areas on the map shall be avoided during departure and arrival.

If transitioning CTR/TMA overflying the hatched areas must not take place below 3000 ft msl.

BLANK

VFR pattern for 4 engine jet aircraft RWY 08L



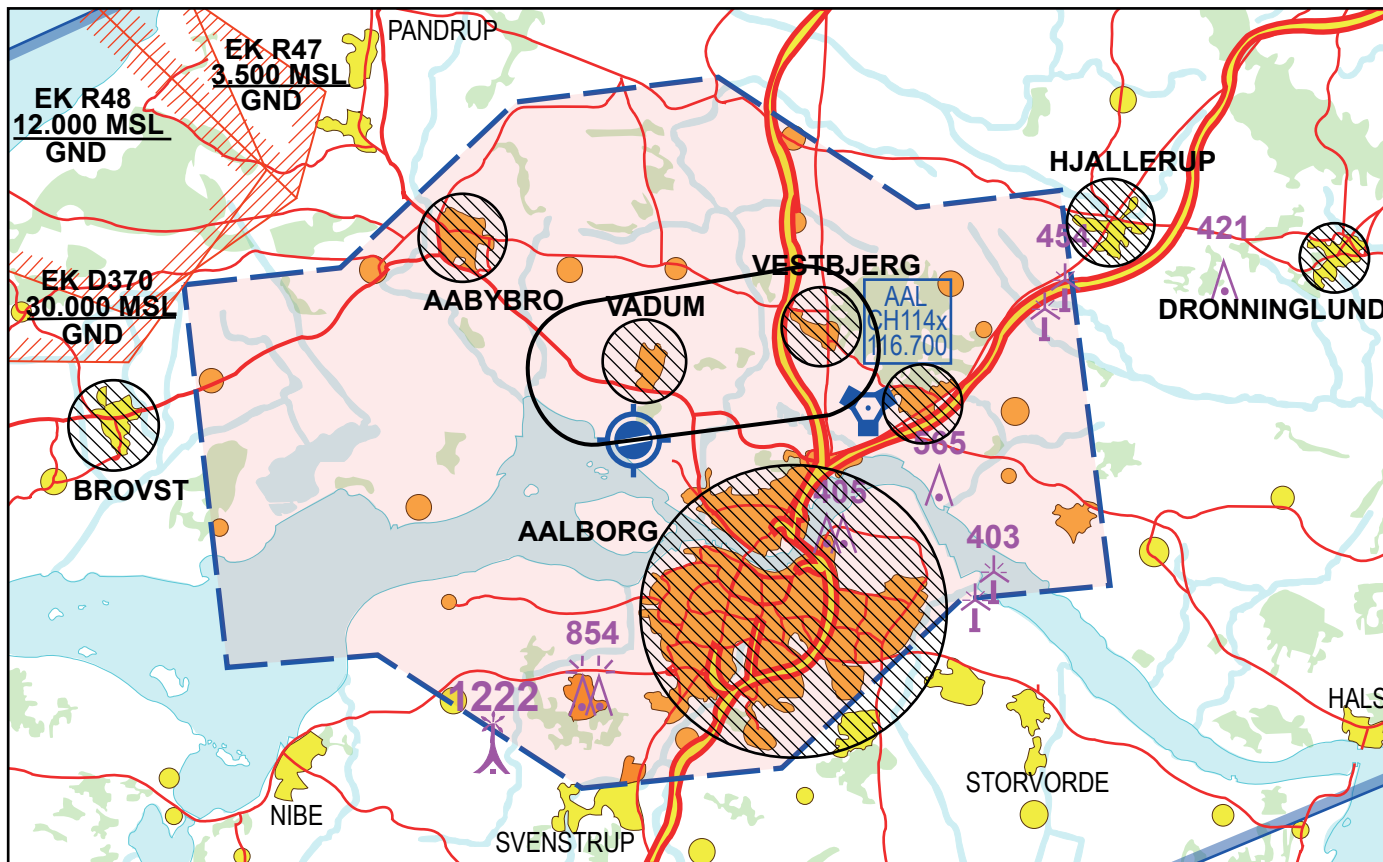
A special VFR pattern, with additional noise abatement areas, has been established for 4 engine jet aircraft.

The hatched areas on the map shall be avoided during departure and arrival.

Downwind altitude 2500 FT. Start descent when turning base.

BLANK

VFR pattern for 4 engine jet aircraft RWY 26R



A special VFR pattern, with additional noise abatement areas, has been established for 4 engine jet aircraft.

The hatched areas on the map shall be avoided during departure and arrival.

Downwind altitude 2500 FT. Start descent when turning base.

BLANK

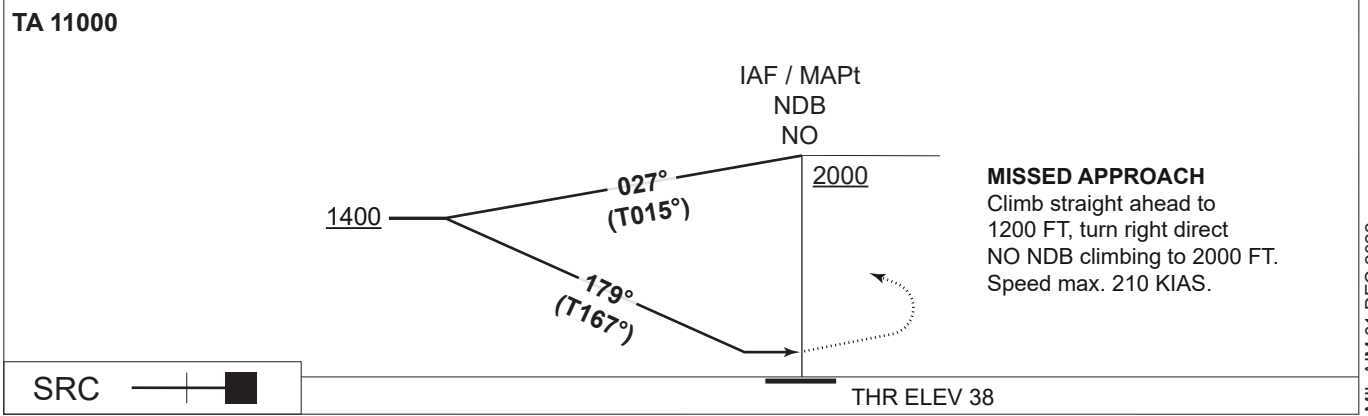
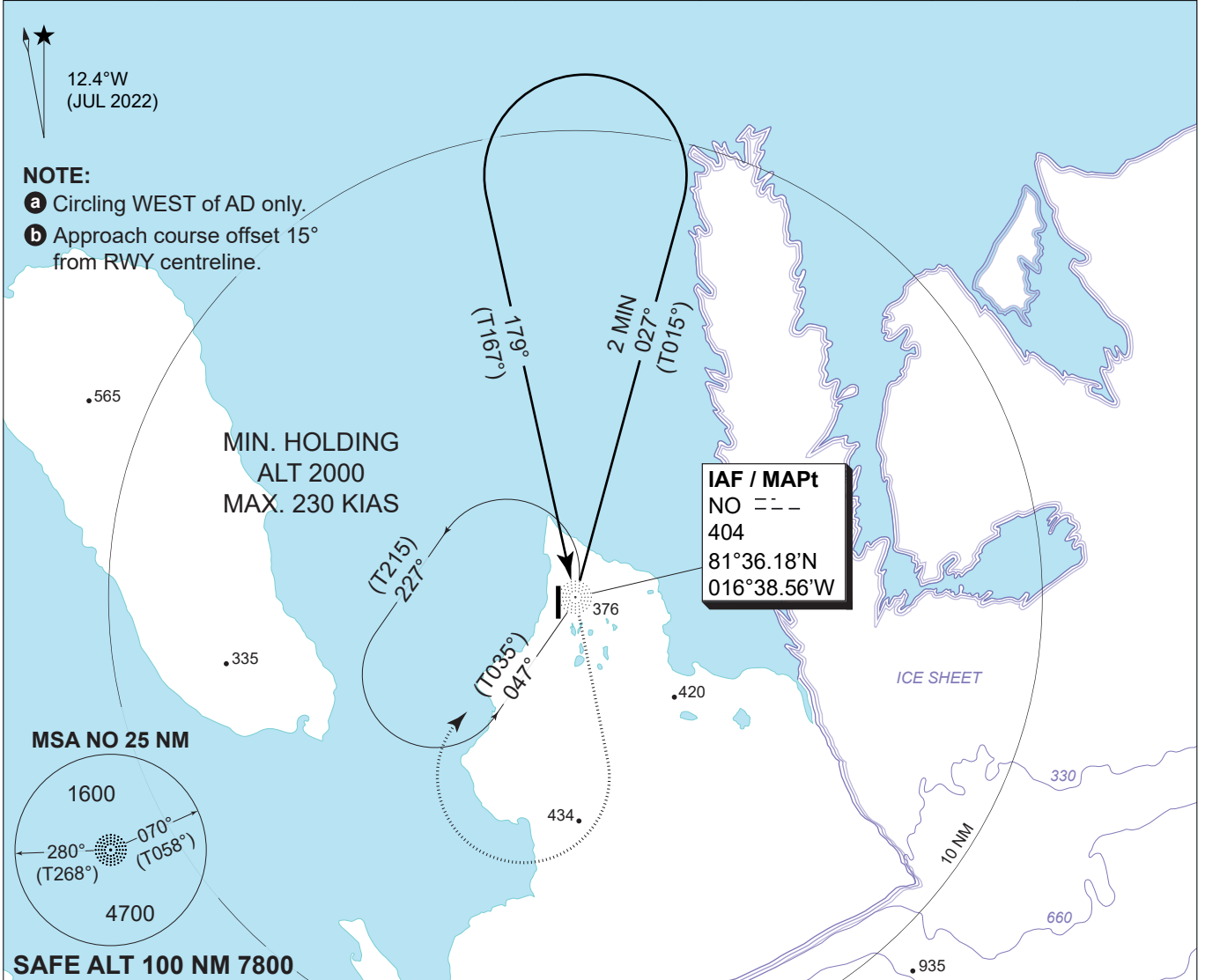
MIPS
INSTRUMENT APPROACH CHART

NDB RWY 19
STATION NORD (BGNO)

AD ELEV 38

STATION NORD RADIO
118.100 267.300

NDB NO 404	APP COURSE 179° (T167°) b	FAF ALT NO FAF	DESCENT GR N/A	MDA 680	THR ELEV 38 FT	ALS LENGTH 540 M	LDA 5984 FT
---------------	-------------------------------------	-------------------	-------------------	-------------------	-------------------	---------------------	----------------



MIPS	CATEGORY	C	D
	S-NDB 21	680 - 2.6 642 (700-2.6/3.0)	
	CIRCLING a	840 - 2.7 802 (900-2.7)	850 - 3.6 812 (900-3.6)

NDB RWY 19

81°36.54'N
016°40.63'W

STATION NORD (BGNO)

CHANGES: ARP CORRECTED.

AIR COMMAND DENMARK - MIL AIM 01 DEC 2022

BLANK