



Forsvaret

Address: Herningvej 30
DK-7470 Karup J
D E N M A R K
Telephone: +45 728 11516
AFTN: EKMCYOYX
E-mail: FKO-KTP-F-AIM@mil.dk
www.flv.dk/milaim

MIL AIP DENMARK

AIR COMMAND DENMARK
MIL AIM

**Amendment No. 239
06 OCT 2022**

INSERT THE FOLLOWING PAGES:

GEN

GEN 0.4-1/ 06 OCT 2022
GEN 0.4-2 06 OCT 2022
GEN 0.4-3/ 06 OCT 2022
GEN 0.4-4 06 OCT 2022
GEN 0.4-5 06 OCT 2022

AD

BGNO

AD 3.1-1/ 06 OCT 2022
AD 3.1-2 06 OCT 2022
AD 3.1-3/ 06 OCT 2022
AD 3.1-4 06 OCT 2022
AD 3.1-5 06 OCT 2022
ADC 06 OCT 2022

NDB RWY 19 06 OCT 2022
RNP RWY 19/ 06 OCT 2022
WP LIST RWY 19 06 OCT 2022

BGMV

AD 3.1-3/ 21 APR 2022
AD 3.1-4 06 OCT 2022

DESTROY THE FOLLOWING PAGES:

GEN

GEN 0.4-1/ 11 AUG 2022
GEN 0.4-2 11 AUG 2022
GEN 0.4-3/ 11 AUG 2022
GEN 0.4-4 11 AUG 2022
GEN 0.4-5 11 AUG 2022

AD

BGNO

AD 3.1-1/ 24 FEB 2022
AD 3.1-2 24 FEB 2022
AD 3.1-3/ 24 FEB 2022
AD 3.1-4 24 FEB 2022
AD 3.1-5 24 FEB 2022
ADC 24 FEB 2022
NDB/DME 21 24 FEB 2022

NEW PAGE
RNAV (GNSS) RWY 21/ 24 FEB 2022
WP LIST RWY 21 24 FEB 2022

BGMV

AD 3.1-3/ 21 APR 2022
AD 3.1-4 24 FEB 2022

END

BLANK

GEN 0.4 CHECKLIST OF AIP PAGES

PAGE	DATE	PAGE	DATE
GEN		2.5-5	11 AUG 2022
GEN0		2.6-1	24 FEB 2022
0.1-1	24 FEB 2022	2.6-2	24 FEB 2022
0.1-2	24 FEB 2022	2.6-3	24 FEB 2022
0.1-3	24 FEB 2022	2.7-1	24 FEB 2022
0.1-4	24 FEB 2022	2.7-2	24 FEB 2022
0.2-1	24 FEB 2022	2.7-3	24 FEB 2022
0.3-1	19 MAY 2022	2.7-4	24 FEB 2022
0.4-1	06 OCT 2022	2.7-5	24 FEB 2022
0.4-2	06 OCT 2022	2.7-6	24 FEB 2022
0.4-3	06 OCT 2022	2.7-7	24 FEB 2022
0.4-4	06 OCT 2022	2.7-8	24 FEB 2022
0.4-5	06 OCT 2022	2.7-9	24 FEB 2022
0.5-1	24 FEB 2022	2.8-1	24 FEB 2022
0.5-2	14 JUL 2022	2.8-2	24 FEB 2022
0.5-3	24 MAR 2022	2.8-3	24 FEB 2022
0.6-1	24 FEB 2022	2.8-4	24 FEB 2022
0.6-2	24 FEB 2022	2.8-5	21 APR 2022
		2.9-1	24 FEB 2022
GEN1		2.10-1	24 FEB 2022
1.1-1	24 FEB 2022		
1.2-1	24 FEB 2022	GEN3	
1.2-2	24 FEB 2022	3.1-1	24 FEB 2022
1.3-1	16 JUN 2022	3.2-1	16 JUN 2022
1.7-1	24 FEB 2022	3.3-1	24 FEB 2022
1.7-2	24 MAR 2022	3.3-2	24 FEB 2022
		3.4-1	24 FEB 2022
GEN2		3.4-2	24 FEB 2022
2.1-1	24 FEB 2022	3.4-3	24 FEB 2022
2.1-2	24 FEB 2022	3.5-1	24 FEB 2022
2.2-1	24 FEB 2022	3.5-2	24 FEB 2022
2.2-2	19 MAY 2022	3.6-1	19 MAY 2022
2.2-3	24 MAR 2022	3.6-2	24 FEB 2022
2.2-4	24 FEB 2022	3.6-3	24 FEB 2022
2.2-5	24 FEB 2022	3.6-4	24 FEB 2022
2.2-6	24 FEB 2022	3.6-5	11 AUG 2022
2.2-7	24 MAR 2022		
2.2-8	24 FEB 2022	GEN4	
2.3-1	24 FEB 2022	Not used	
2.4-1	14 JUL 2022		
2.4-2	24 MAR 2022		
2.4-3	24 FEB 2022		
2.5-1	24 FEB 2022		
2.5-2	24 FEB 2022		
2.5-3	11 AUG 2022		
2.5-4	24 FEB 2022		

PAGE	DATE	PAGE	DATE
ENR		ENR2	
ENR0		2.1-1	24 FEB 2022
0.1-1	24 FEB 2022	2.1-2	24 FEB 2022
0.1-2	24 MAR 2022	2.1-3	19 MAY 2022
0.1-3	24 FEB 2022	2.1-4	19 MAY 2022
		2.1-5	11 AUG 2022
ENR1		2.1-6	24 FEB 2022
1.1-1	24 FEB 2022	2.2-1	19 MAY 2022
1.1-2	24 MAR 2022	2.2-2	19 MAY 2022
1.1-3	24 FEB 2022	2.2-3	11 AUG 2022
1.1-4	21 APR 2022	2.3-1	24 MAR 2022
1.2-1	24 FEB 2022	2.3-2	24 MAR 2022
1.2-2	24 FEB 2022	2.3-3	11 AUG 2022
1.3-1	21 APR 2022	2.3-4	19 MAY 2022
1.4-1	24 FEB 2022	2.3-5	19 MAY 2022
1.4-2	24 MAR 2022	2.3-6	11 AUG 2022
1.5-1	21 APR 2022	2.3-7	11 AUG 2022
1.6-1	24 FEB 2022		
1.6-2	24 FEB 2022	ENR3	
1.7-1	24 FEB 2022	3.0-1	24 FEB 2022
1.7-2	24 FEB 2022	3.1-1	24 FEB 2022
1.7-3	11 AUG 2022	3.2-1	24 FEB 2022
1.8-1	24 FEB 2022	3.3-1	24 FEB 2022
1.9-1	24 FEB 2022	3.3-2	24 FEB 2022
1.9-2	19 MAY 2022	3.3-3	24 FEB 2022
1.9-3	24 FEB 2022	3.3-4	24 FEB 2022
1.9-4	11 AUG 2022	3.3-5	24 FEB 2022
1.9-5	11 AUG 2022	3.3-6	24 FEB 2022
1.9-6	11 AUG 2022	3.3-7	24 FEB 2022
1.10-1	24 FEB 2022	3.3-8	24 FEB 2022
1.10-2	24 FEB 2022	3.3-9	24 FEB 2022
1.10-3	24 FEB 2022	3.3-10	24 FEB 2022
1.10-4	24 FEB 2022	3.3-11	24 FEB 2022
1.10-5	24 FEB 2022	3.3-12	24 MAR 2022
1.10-6	24 FEB 2022	3.3-13	24 MAR 2022
1.10-7	24 FEB 2022	3.3-14	24 MAR 2022
1.10-8	24 FEB 2022	3.3-15	24 FEB 2022
1.10-9	24 FEB 2022	3.3-16	24 FEB 2022
1.10-10	24 FEB 2022	3.3-17	24 FEB 2022
1.10-11	24 FEB 2022	3.3-18	24 MAR 2022
1.10-12	24 FEB 2022	3.3-19	24 FEB 2022
1.10-13	24 FEB 2022	3.3-20	24 FEB 2022
1.10-14	24 FEB 2022	3.3-21	24 FEB 2022
1.10-15	24 FEB 2022	3.3-22	24 FEB 2022
1.10-16	24 FEB 2022	3.4-1	24 FEB 2022
1.10-17	24 FEB 2022	3.4-2	24 FEB 2022
1.10-18	24 FEB 2022	3.4-3	24 FEB 2022
1.10-19	24 FEB 2022	3.4-4	24 FEB 2022
1.10-20	24 FEB 2022		
1.11-1	19 MAY 2022		
1.11-2	24 FEB 2022		

PAGE	DATE	PAGE	DATE
3.4-5	24 FEB 2022	5.1-17	24 MAR 2022
3.4-6	24 FEB 2022	5.1-18	24 MAR 2022
3.4-7	24 FEB 2022	5.2-1	24 FEB 2022
3.4-8	24 FEB 2022	5.2-2	24 FEB 2022
3.4-9	24 FEB 2022	5.2-3	24 FEB 2022
3.4-10	24 FEB 2022	5.2-4	24 FEB 2022
3.4-11	24 FEB 2022	5.2-5	24 MAR 2022
3.4-12	24 FEB 2022	5.2-6	24 FEB 2022
3.4-13	11 AUG 2022	5.2-7	16 JUN 2022
3.4-14	24 MAR 2022	5.2-9	24 FEB 2022
3.5-1	24 FEB 2022	5.2-10	24 FEB 2022
3.5-2	16 JUN 2022	5.2-11	24 FEB 2022
3.6-1	24 FEB 2022	5.3-1	24 FEB 2022
		5.3-2	24 FEB 2022
		5.3-3	24 FEB 2022
ENR4		5.3-4	24 FEB 2022
4.1-1	19 MAY 2022	5.3-5	16 JUN 2022
4.1-2	24 FEB 2022	5.4-1	19 MAY 2022
4.2-1	24 FEB 2022	5.4-2	24 FEB 2022
4.3-1	24 FEB 2022	5.4-3	24 FEB 2022
4.4-1	24 FEB 2022	5.4-4	24 FEB 2022
4.4-2	24 FEB 2022	5.4-5	14 JUL 2022
4.4-3	24 FEB 2022	5.4-6	14 JUL 2022
4.4-4	24 FEB 2022	5.4-7	14 JUL 2022
4.4-5	24 FEB 2022	5.4-8	14 JUL 2022
4.4-6	24 FEB 2022	5.4-9	14 JUL 2022
4.4-7	24 FEB 2022	5.4-10	14 JUL 2022
4.4-8	24 FEB 2022	5.4-11	14 JUL 2022
4.4-9	24 FEB 2022	5.4-12	14 JUL 2022
4.4-10	24 MAR 2022	5.4-13	14 JUL 2022
4.4-11	24 FEB 2022	5.4-14	14 JUL 2022
4.4-12	24 FEB 2022	5.4-15	14 JUL 2022
4.5-1	24 FEB 2022	5.4-16	24 FEB 2022
		5.4-17	24 FEB 2022
ENR5		5.5-1	24 FEB 2022
5.1-1	24 FEB 2022	5.5-2	24 FEB 2022
5.1-2	24 FEB 2022	5.5-3	24 FEB 2022
5.1-3	24 FEB 2022	5.5-4	24 FEB 2022
5.1-4	24 FEB 2022	5.5-5	24 FEB 2022
5.1-5	24 FEB 2022	5.5-6	24 FEB 2022
5.1-6	24 FEB 2022	5.5-7	24 FEB 2022
5.1-7	24 FEB 2022	5.5-8	24 FEB 2022
5.1-8	24 FEB 2022	5.5-9	24 FEB 2022
5.1-9	24 MAR 2022	5.5-10	24 FEB 2022
5.1-10	24 FEB 2022	5.5-11	21 APR 2022
5.1-11	24 FEB 2022	5.6-1	24 FEB 2022
5.1-12	24 FEB 2022	5.6-2	24 FEB 2022
5.1-13	24 FEB 2022	5.6-3	24 MAR 2022
5.1-14	24 FEB 2022		
5.1-15	24 FEB 2022	ENR6	
5.1-16	24 FEB 2022	6.1-1	24 FEB 2022

PAGE	DATE	PAGE	DATE
AD		AD 2.1-7	19 MAY 2022
AD0		AD 2.1-8	24 FEB 2022
0.1-1	24 FEB 2022	AD 2.1-9	24 FEB 2022
0.1-2	24 FEB 2022	AD 2.1-10	24 FEB 2022
AD1		AD 2.1-11	24 FEB 2022
1.1-1	24 FEB 2022	ADC	19 MAY 2022
1.2-1	24 FEB 2022	AOC-A RWY 10L	24 FEB 2022
1.2-2	24 FEB 2022	AOC-A RWY 28R	24 FEB 2022
AD2		APDC	24 FEB 2022
2.0-1	24 FEB 2022	VAC	24 FEB 2022
2.0-2	24 FEB 2022	NAC	24 FEB 2022
2.0-3	24 FEB 2022	Glider Areas in TMA	19 MAY 2022
EKKA		ILS or LOC 10L	19 MAY 2022
AD 2.1-1	24 FEB 2022	ILS or LOC Z 10L	19 MAY 2022
AD 2.1-2	24 FEB 2022	HI-VORTAC 10L	19 MAY 2022
AD 2.1-3	24 FEB 2022	VORTAC 10L	19 MAY 2022
AD 2.1-4	24 FEB 2022	RNAV (GNSS) 10L	19 MAY 2022
AD 2.1-5	24 FEB 2022	WAYPOINT LIST 10L	24 FEB 2022
AD 2.1-6	24 FEB 2022	ILS or LOC 28R	19 MAY 2022
AD 2.1-7	19 MAY 2022	ILS or LOC Z 28R	19 MAY 2022
AD 2.1-8	24 FEB 2022	HI-VORTAC 28R	19 MAY 2022
AD 2.1-9	24 FEB 2022	VORTAC 28R	19 MAY 2022
AD 2.1-10	24 FEB 2022	RNAV (GNSS) 28R	19 MAY 2022
ADC	19 MAY 2022	WAYPOINT LIST 28R	24 FEB 2022
AOC-A 09R	24 FEB 2022	EKYT	
PATC 27L	24 FEB 2022	AD 2.1-1	24 FEB 2022
VAC	24 FEB 2022	AD 2.1-2	11 AUG 2022
Glider Areas in TMA	14 JUL 2022	AD 2.1-3	24 FEB 2022
ILS or LOC 09R	19 MAY 2022	AD 2.1-4	24 FEB 2022
COPTER ILS or LOC 09R	19 MAY 2022	AD 2.1-5	24 FEB 2022
HI-TACAN 09R	19 MAY 2022	AD 2.1-6	19 MAY 2022
RNAV (GNSS) 09R	19 MAY 2022	AD 2.1-7	19 MAY 2022
WAYPOINT LIST 09R	24 FEB 2022	AD 2.1-8	24 FEB 2022
ILS or LOC 27L	19 MAY 2022	AD 2.1-9	19 MAY 2022
COPTER ILS or LOC 27L	19 MAY 2022	ADC	14 JUL 2022
HI-TACAN 27L	19 MAY 2022	AOC-A 08L	24 FEB 2022
RNAV (GNSS) 27L	19 MAY 2022	PATC 26R	24 FEB 2022
WAYPOINT LIST 27L	24 FEB 2022	VAC	24 FEB 2022
EKSP		NAC	24 FEB 2022
AD 2.1-1	24 FEB 2022	VFR-08L	24 FEB 2022
AD 2.1-2	24 FEB 2022	VFR-26R	24 FEB 2022
AD 2.1-3	24 FEB 2022	ILS or LOC 08L (CAT A-B)	11 AUG 2022
AD 2.1-4	24 FEB 2022	ILS or LOC 08L (CAT C-E)	11 AUG 2022
AD 2.1-5	24 FEB 2022	HI-TACAN 08L	11 AUG 2022
AD 2.1-6	24 FEB 2022	TACAN 08L (CAT A-B)	11 AUG 2022
		TACAN 08L (CAT C-E)	11 AUG 2022
		RNAV (GNSS) 08L	11 AUG 2022
		WAYPOINT LIST 08L	24 FEB 2022

PAGE	DATE
ILS or LOC 26R (CAT A-B)	11 AUG 2022
ILS or LOC 26R (CAT C-E)	11 AUG 2022
HI-VORTAC 26R	11 AUG 2022
VORTAC 26R (CAT A-B)	11 AUG 2022
VORTAC 26R (CAT C-E)	11 AUG 2022
RNAV (GNSS) 26R	11 AUG 2022
WAYPOINT LIST 26R	24 FEB 2022

AD 3**BGNO**

AD 3.1-1	06 OCT 2022
AD 3.1-2	06 OCT 2022
AD 3.1-3	06 OCT 2022
AD 3.1-4	06 OCT 2022
AD 3.1-5	06 OCT 2022
ADC	24 FEB 2022
NDB/DME 21	24 FEB 2022
NDB RWY 19	06 OCT 2022
RNP RWY 19	06 OCT 2022
WP LIST RWY 19	06 OCT 2022

BGMV

AD 3.1-1	24 FEB 2022
AD 3.1-2	24 FEB 2022
AD 3.1-3	21 APR 2022
AD 3.1-4	06 OCT 2022
AD 3.1-5	24 FEB 2022
AD 3.1-6	24 FEB 2022
ADC	24 FEB 2022
RNAV (GNSS) 32	24 FEB 2022
WP LIST 32	21 APR 2022

CHARTS

LFC 1:500.000 Ed. 45	24 MAR 2022
ANC 1:250.000 CPH AREA	28 MAR 2019

INTENTIONALLY LEFT BLANK

BGNO – STATION NORD - GREENLAND**1. AERODROME LOCATION INDICATOR AND NAME**

BGNO – STATION NORD

2. AERODROME GEOGRAPHICAL AND ADMINISTRATIVE DATA

1	ARP coordinates and site at AD	81°36.54'N 16°40.63'W 40 meters S of THR RWY 21
2	Direction and distance from (city)	N/A
3	Elevation/reference temperature	38 FT AMSL / not avbl
4	MAG VAR/annual change	12.44° W (JUL 2022) / 0.65° E per year
5	AD administration postal address	Joint Arctic Command Aalisartut Aqqutaa 47 Postbox 1072 3900 Nuuk Greenland
	Telephone	+299 36 40 00
	Telefax	
	Telex	
	E-MAIL	ako@mil.dk
6	Types of traffic permitted	IFR/VFR
7	Remarks	

3. OPERATIONAL HOURS

1	AD administration	MON - THU 0730-1400 FRI 0730-1200
2	Customs and immigration	Constable Point, BGCP
3	Health and sanitation	N/A
4	AIS briefing office	N/A
5	ATS reporting office	As AD administration
6	MET briefing office	None
7	ATS	None
8	Fuelling	N/A
9	Handling	N/A
10	Security	N/A
11	De-icing	Not avbl
12	Remarks	PPR 72 HR

4. HANDLING SERVICES AND FACILITIES

1	Cargo handling facilities	NIL
2	Fuel/oil types	JP-8
3	Fuelling facilities/capacity	Limited
4	Oxygen	NIL
5	De-icing facilities	NIL
6	Hangar space for visiting aircraft	NIL
7	Repair facilities for visiting aircraft	NIL
8	Remarks	

5. PASSENGER FACILITIES

1	Hotels	NIL
2	Restaurants	NIL
3	Transportation	NIL
4	Medical facilities	NIL
5	Bank and post office	NIL
6	Tourist office	NIL
7	Remarks	

6. RESCUE AND FIRE FIGHTING SERVICES

1	AD category for fire fighting	CAT 3 (6) (Ref AD 1-2-1)
2	Rescue equipment	Yes
3	Capability for removal of disabled aircraft	Towing by dozer
4	Remarks	

7. SEASONAL AVAILABILITY - CLEARING

1	Seasonal availability	All seasons, limited MAY, JUN, SEP
2	Clearance priorities	NIL
3	Remarks	

8. APRONS, TAXIWAYS AND CHECK LOCATION DATA

1	Apron surface and strength	GRAVEL
2	Taxiway width, surface and strength	GRAVEL
3	ACL location and elevation	NIL
4	VOR/INS checkpoints	NIL
5	Remarks	

9. SURFACE MOVEMENT GUIDANCE AND CONTROL SYSTEM MARKING

1	Use of aircraft stand ID signs, TWY guide lines and visual docking/parking guidance system of aircraft signs	NIL
2	RWY and TWY markings and LGT	NIL
3	Stop bars	NIL
4	Remarks	

10. AERODROME OBSTACLES

All relevant obstacles are lighted.

11. METEOROLOGICAL INFORMATION PROVIDED

Meteorological information can be obtained from Central Forecasting Office (DMI Nord) Nuuk and BGNO.

12. RUNWAY PHYSICAL CHARACTERISTICS

RWY designator	Directions	Dimension of RWY	Strength and surface of RWY and SWY	THR coordinates	THR elevation
1	2	3	4	5	6
01	002.0°T 014.4°M	5984 X 180 ft*	Gravel	81°35.582'N 016°40.90'W	61 ft
19	182.0°T 194.4°M			81°36.562'N 016°40.666'W	38 ft

*RWY width can be reduced depending on snow clearance

RWY	Slope of RWY-SWY	SWY dimensions	CWY dimensions	Strip dimensions	OFZ	Remarks
	7	8	9	10	11	12
01 19	Less than 1%	NIL	NIL	NIL	NIL	

13. DECLARED DISTANCES

RWY Designator	TORA (ft)	TODA (ft)	ASDA (ft)	LDA (ft)	Remarks
1	2	3	4	5	6
01	5984	5984	5984	5984	
19	5984	5984	5984	5984	

14. APPROACH AND RUNWAY LIGHTING

RWY	APP LGT	THR	PAPI	TDZ LGT	RWY CL	RWY EDGE	RWY END	OVRN	Rem.
01						X	X		
19	SRC	YES	X			X	X		

15. OTHER LIGHTING, SECONDARY POWER SUPPLY

1	ABN/IBN location characteristics and hours of operation	NIL
2	LDI indication and LGT Anemometer location and LGT	NIL
3	TWY edge and centreline lighting	NIL
4	Secondary power supply switch-over time	NIL
5	Remarks	

16. HELICOPTER LANDING AREA

NIL

17. ATS AIRSPACE

1	Designation and lateral limits	NIL
2	Vertical limits	NIL
3	Airspace classification	G
4	ATS unit call sign Language(s)	STATION NORD RADIO EN, DA
5	Transition altitude	11.000 FT
6	Remarks	

18. ATS COMMUNICATION FACILITIES

Service designation	Call sign	Frequency	Hours of operation	Remarks
1	2	3	4	5
RADIO	STATION NORD	118.100 267.300	H 24 On request	4000FT/25NM

19. RADIO NAVIGATION AND LANDING AIDS

Type of aid Cat of ILS/MLS (Variation)	ID	Frequency	Hours of operation	Site of transmitting antenna co-ordinates	Remarks
1	2	3	4	5	7
NDB	NO	404KHz	HO	81 36 09.96N	
DME	NOR	111,7MHz	HO	016 38 33.49W 81 35 53.80N 016 39 55.20W	

20. LOCAL TRAFFIC REGULATIONS

NIL

21. NOISE ABATEMENT PROCEDURES

NIL.

22. FLIGHT PROCEDURES

NIL.

24. CHARTS RELATED TO BGNO

AERODROME CHART
NDB RWY 19
RNP RWY 19

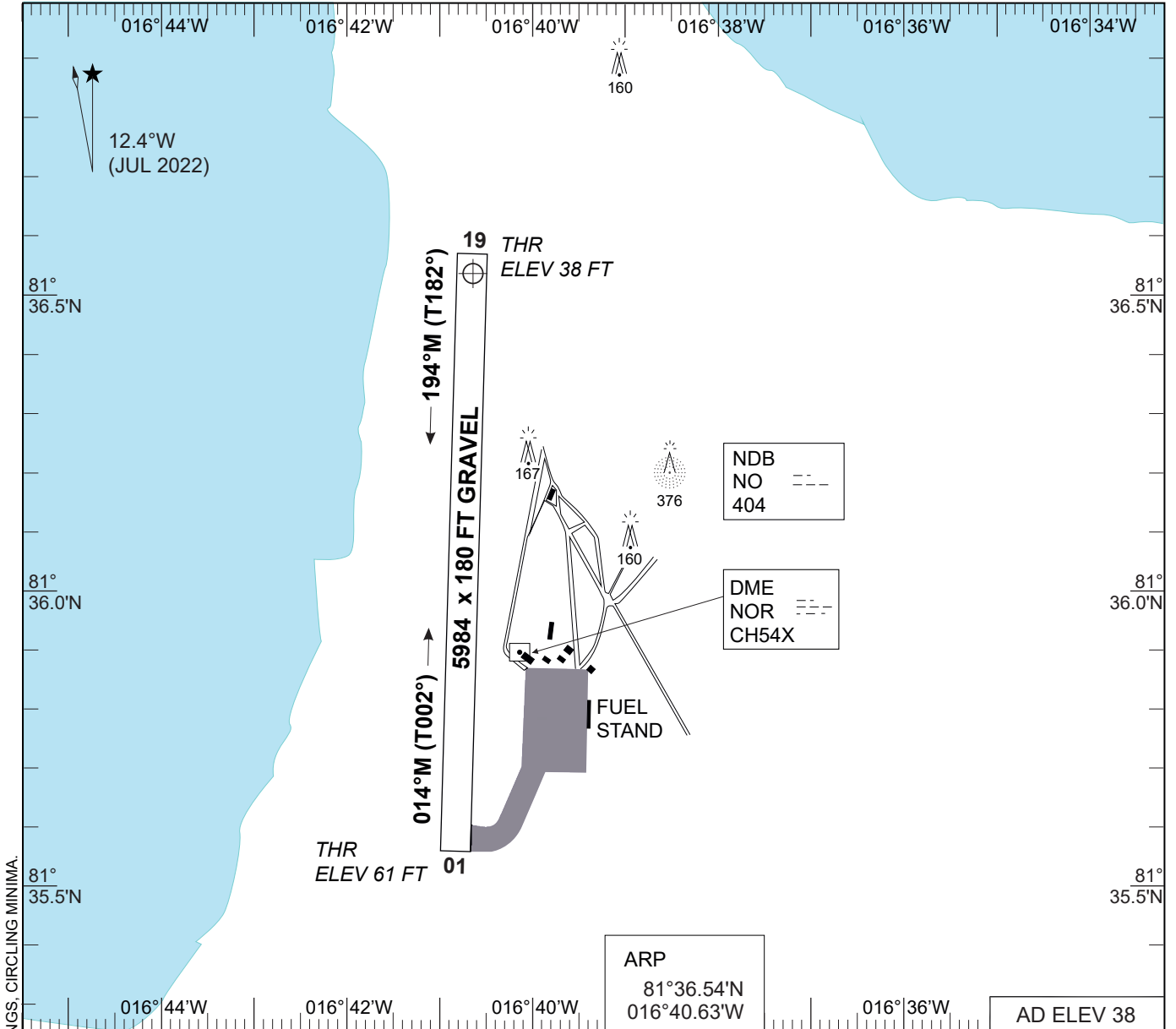
25. GPS WAYPOINT POSITIONS

Waypoint	Position
NOIAW	81°49.277N 017°10.666W
NOIAE	81°48.950N 016°04.978W
NOIWP	81°47.435N 016°38.213W
NOFAP	81°42.470N 016°39.345W
NOMPT	81°37.557N 016°40.446W

BLANK

AERODROME CHART

STATION NORD (BGNO)



ARP
81°36.54'N
016°40.63'W

AD ELEV 38

Yellow day markings (sticks) or flags spaced at 50 m
 White RWY edge lights spaced at 150 m for night operations (IR optional).
 Green THR. Red, end of RWY. 61 ft Gravel or compact snow 5984 x 180 FT 38 ft 540 m SRC (SIMPLE ALS)

RWY	LCN	TORA	ASDA	TODA	LDA	AEED	ASI	ALS	THR ELEV	THR PSN
01		5984	5984	5984	5984				61	81°35.58'N 016°40.90'W
19		5984	5984	5984	5984			SRC	38	81°36.56'N 016°40.66'W

MIPS		CIRCLING MINIMA			
A	B	C	D		
440	-1.5 402 (500-1.5)	540	-1.6 502 (600-1.6)	840	-2.4 802 (900-2.4)
				850	-3.6 812 (900-3.6)

NOTE:
CIRCLING WEST OF AD ONLY

CHANGES: RWY DESIGNATORS, ELEVATIONS, RWY LENGTH, MAG/TRUE BEARINGS, CIRCLING MINIMA.

AIR COMMAND DENMARK - MIL-AIM 06 OCT 2022

AERODROME CHART

STATION NORD (BGNO)

BLANK

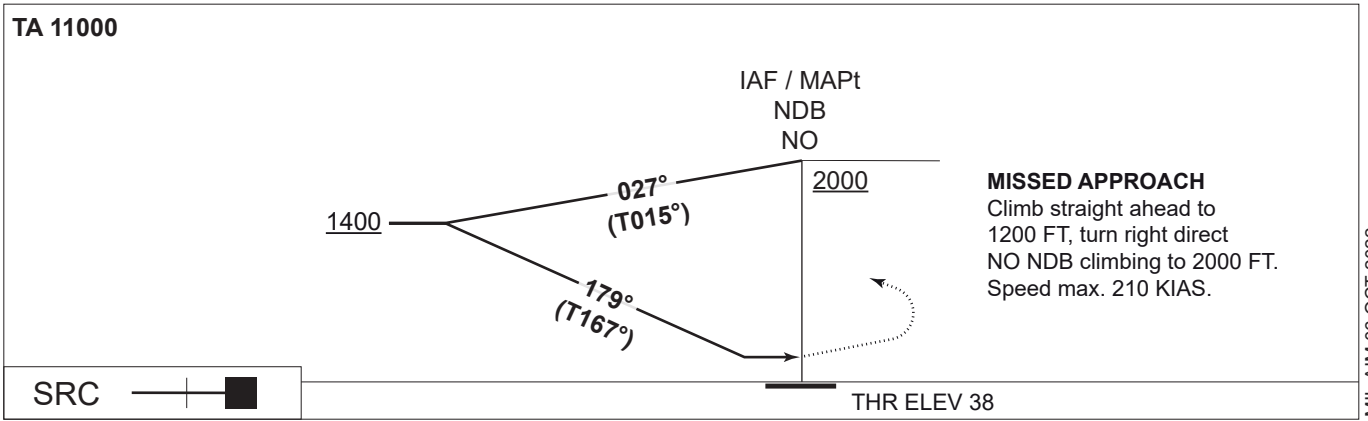
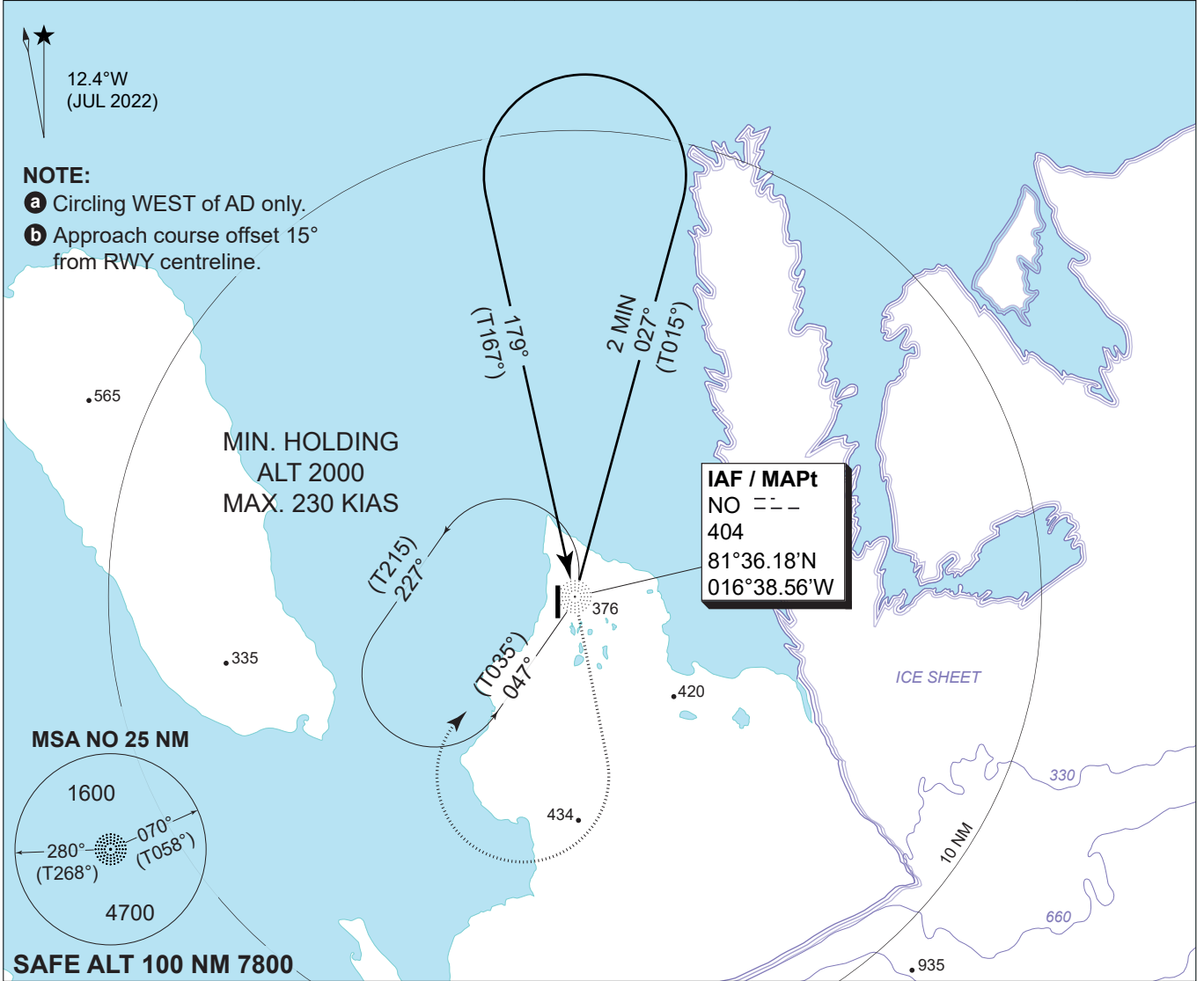
MIPS
INSTRUMENT APPROACH CHART

NDB RWY 19
STATION NORD (BGNO)

AD ELEV 38

STATION NORD RADIO
118.100 267.300

NDB NO 404	APP COURSE 179° (T167°) b	FAF ALT NO FAF	DESCENT GR N/A	MDA 680	THR ELEV 38 FT	ALS LENGTH 540 M	LDA 5984 FT
---------------	-------------------------------------	-------------------	-------------------	-------------------	-------------------	---------------------	----------------



CHANGES: NEW PROCEDURE.

MIPS	CATEGORY	C	D
	S-NDB 21	680 - 2.6 642 (700-2.6/3.0)	
CIRCLING a	840 - 2.7 802 (900-2.7)	850 - 3.6 812 (900-3.6)	

NDB RWY 19

81°36.54'N
016°40.63'E

STATION NORD (BGNO)

AIR COMMAND DENMARK - MIL AIM 06 OCT 2022

BLANK

MIPS INSTRUMENT APPROACH CHART

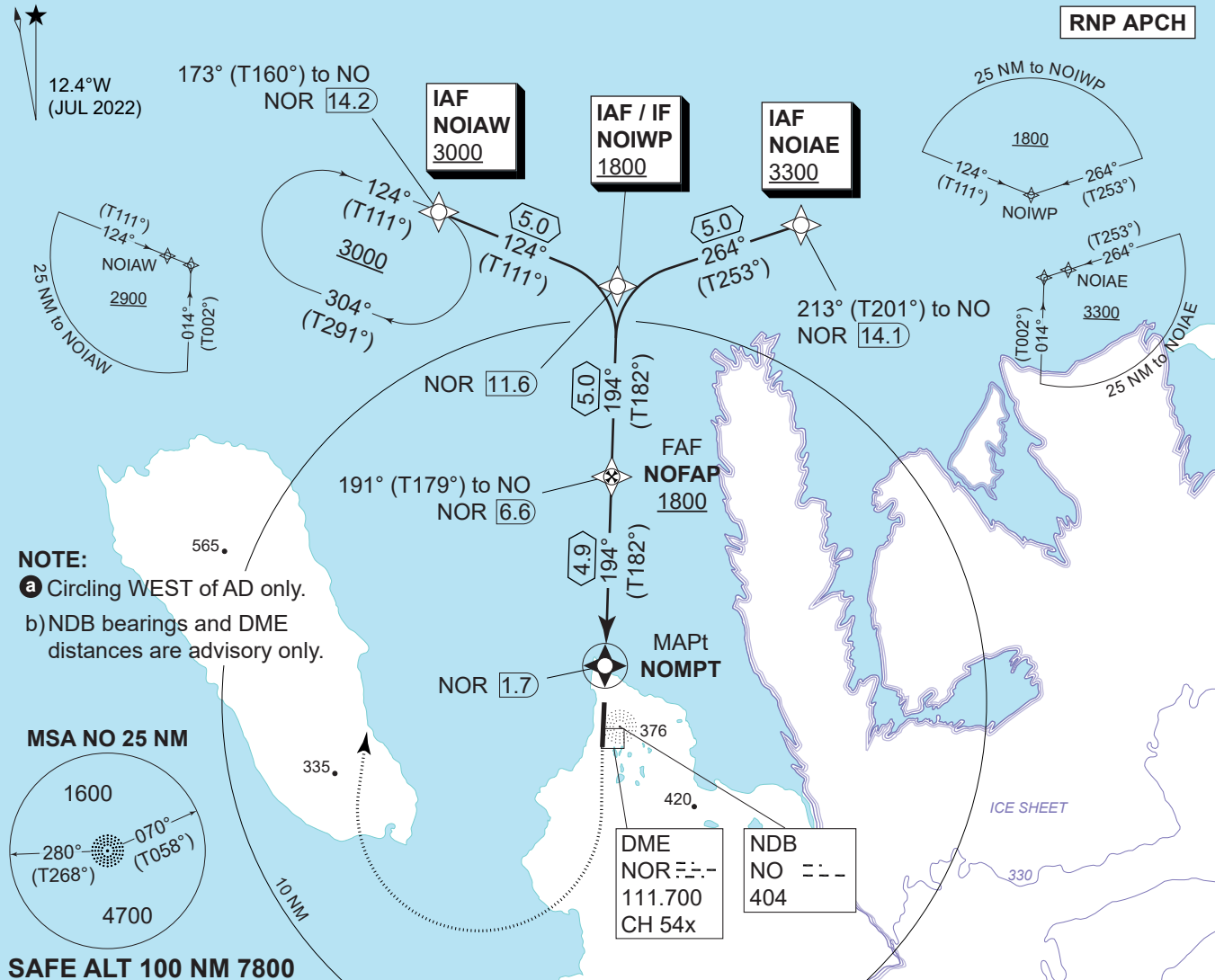
RNP RWY 19 STATION NORD (BGNO)

AD ELEV 38 FT

STATION NORD RADIO
118.100 267.300

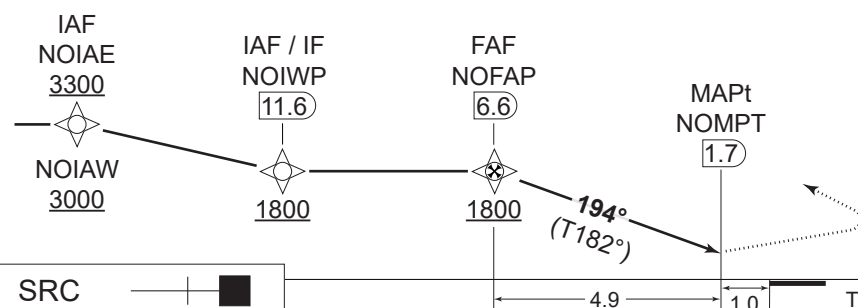
NDB NO 404	DME NOR CH 54x	APP COURSE 194°M / 182°T	FAF ALT 1800	DESCENT GR 2.7° (4.7%)	MDA SEE CAT	THR ELEV 38	ALS LENGTH 540 M	LDA 5984 FT
---------------	-------------------	-----------------------------	-----------------	---------------------------	-----------------------	----------------	---------------------	----------------

RNP APCH



CDFA 2.7° / 4.7%				
Dist to NOMPT	4	3	2	1
ALT	1530	1240	960	670

TA 11000
TCH 50



SRC [Symbol] 4.9 1.0 THR ELEV 38

CATEGORY	A	B	C	D
LNAV (MACG 5%)	380 - 1.4 342 (400-1.4)	380 - 1.4 342 (400-1.4)	390 - 1.4 352 (400-1.6)	430 - 1.6 392 (400-1.8)
LNAV (MACG 2.5%)	390 - 1.4 352 (400-1.6)	410 - 1.4 372 (400-1.7)	440 - 1.5 402 (500-1.9)	460 - 1.6 422 (500-2.0)
CIRCLING a	440 - 1.5 402 (500-1.5)	540 - 1.6 502 (600-1.6)	840 - 2.4 802 (900-2.4)	850 - 3.6 812 (900-3.6)

RNP RWY 19

81°36.54'N
016°40.63'W

STATION NORD (BGNO)

CHANGES: MINIMA, NEW CHART, MAG. VAR. ELEVATIONS, OBST. ELEV., PROCEDURE ALT., WAYPOINT COORDINATES NOMPT & NOIAE, MSA, TAA, CHART NAME, RWY DESIGNATION.

AIR COMMAND DENMARK - MIL AIM 06 OCT 2022

BGNO RNP RWY 19 waypoint coordinates

RWY 19 from NOIAE (Initial LEFT) APPROACH RNP

		CODING				DISPLAY			
NOIAE	IAF	81 48 57.01N	016 04 58.70W	81 48.950N	016 04.978W				
NOIWP	IAF / IF	81 47 26.10N	016 38 12.78W	81 47.435N	016 38.213W				
NOFAP	FAF	81 42 28.20N	016 39 20.70W	81 42.470N	016 39.345W				
NOMPT	MAPt	81 37 33.39N	016 40 26.75W	81 37.557N	016 40.446W				
NOIAW	MAHF	81 49 16.62N	017 10 39.96W	81 49.277N	017 10.666W				

RWY 19 from NOIAW (Initial RIGHT) APPROACH RNP

		CODING				DISPLAY			
NOIAW	IAF	81 49 16.62N	017 10 39.96W	81 49.277N	017 10.666W				
NOIWP	IAF / IF	81 47 26.10N	016 38 12.78W	81 47.435N	016 38.213W				
NOFAP	FAF	81 42 28.20N	016 39 20.70W	81 42.470N	016 39.345W				
NOMPT	MAPt	81 37 33.39N	016 40 26.75W	81 37.557N	016 40.446W				
NOIAW	MAHF	81 49 16.62N	017 10 39.96W	81 49.277N	017 10.666W				

Temperature correction table

		Published Altitude	HAA	OAT at Station Nord											
				0	-4	-8	-12	-16	-20	-24	-28	-32	-36	-40	-44
				Corrected altitude*											
FIX	NOIAE	3300	3262	3490	3540	3590	3650	3700	3760	3820	3880	3950	4020	4080	4160
	NOIAW	3000	2962	3170	3220	3260	3310	3370	3420	3470	3530	3590	3650	3710	3780
	NOIWP	1800	1762	1900	1930	1960	1990	2020	2050	2080	2120	2150	2190	2220	2260
	NOFAP	1800	1762	1900	1930	1960	1990	2020	2050	2080	2120	2150	2190	2220	2260
Distance to NOMPT	4 NM	1530	1492	1620	1640	1660	1690	1720	1740	1770	1800	1830	1860	1890	1920
	3 NM	1240	1202	1310	1330	1350	1370	1390	1410	1430	1460	1480	1500	1530	1560
	2 NM	960	922	1020	1030	1050	1060	1080	1090	1110	1130	1150	1160	1180	1200
	1 NM	670	632	710	720	730	740	750	760	770	790	800	810	820	840
MDA	CAT D	430	392	460	460	470	480	480	490	500	500	510	520	530	540
	CAT C	390	352	410	420	430	430	440	440	450	460	460	470	480	490
	CAT B	350	312	370	380	380	390	390	400	400	410	420	420	430	440
	CAT A	340	302	360	370	370	380	380	390	390	400	400	410	420	420
Circling	CAT D	850	812	900	910	930	940	950	970	980	1000	1010	1030	1050	1060
	CAT C	840	802	890	900	910	930	940	960	970	990	1000	1020	1030	1050
	CAT B	530	492	560	570	580	590	590	600	610	620	630	640	650	660
	CAT A	440	402	470	470	480	490	490	500	510	520	520	530	540	550

*) Rounded up to the nearest 10 ft

CHANGES: NEW TEMP. CORR. TABLE, NEW COORDINATES FOR NOIAE, NOMPT.

AIR COMMAND DENMARK - MIL. AIM 06 OCT 2022

9. SURFACE MOVEMENT GUIDANCE AND CONTROL SYSTEM MARKING

1	Use of aircraft stand ID signs, TWY guide lines and visual docking/parking guidance system of aircraft signs	NIL
2	RWY and TWY markings and LGT	Markers/ no light
3	Stop bars	NIL
4	Remarks	

10. AERODROME OBSTACLES

Obst ID	OBST type	Coord	HGT/ELEV (FT)		OBST LGT		Markings	RMK
			GND	MSL	Type	HR		
Antenna 1	UNLIT_ANT	72°13'58.44"N 023°55'36.18"W	66	107	UNK		UNK	
Antenna 2	UNLIT_ANT	72°13'58.68"N 023°55'42.24"W	66	107	UNK		UNK	
Antenna 3	UNLIT_ANT	72°14'00.60"N 023°55'43.38"W	66	107	UNK		UNK	
Antenna 4	UNLIT_ANT	72°14'0.84"N 023°55'47.58"W	66	107	UNK		UNK	
Antenna 5	UNLIT_ANT	72°14'00.84"N 023°55'36.30"W	66	107	UNK		UNK	NDB antenna
Antenna 6	UNLIT_ANT	72°14'00.12"N 23°55'37.44"W	66	107	UNK		UNK	
Antenna 7	UNLIT_ANT	72°13'58.14"N 023°55'00.78"W	99	132	UNK		UNK	
Antenna 8	UNLIT_ANT	72°13'56.76"N 023°55'02.34"W	99	132	UNK		UNK	
Antenna 9	UNLIT_ANT	72°13'55.44"N 023°55'03.48"W	99	132	UNK		UNK	
Antenna 10	UNLIT_ANT	72°13'53.58"N 023°54'55.32"W	99	132	UNK		UNK	
Antenna 11	UNLIT_ANT	72°13'52.92"N 023°54'49.92"W	99	132	UNK		UNK	
Antenna 12	UNLIT_ANT	72°13'54.18"N 023°54'48.18"W	99	128	UNK		UNK	
Antenna 13	UNLIT_ANT	72°13'55.98"N 023°54'45.90"W	99	128	UNK		UNK	
Antenna 14	UNLIT_ANT	72°13'54.54"N 023°54'42.12"W	99	128	UNK		UNK	
Enkeltst. mast	UNLIT_ANT	72°13'56.94"N 023°54'43.02"W	23	50	UNK		UNK	
Wind sock	UNLIT_POLE	72°14'01.44"N 023°54'41.46"W	20	73	UNK		UNK	
TWR	UNLIT_BLDG	72°14'03.06"N 023°55'17.94"W	33	112	UNK		UNK	

11. METEOROLOGICAL INFORMATION PROVIDED

Meteorological information can be obtained from Central Forecasting Office (DMI Nord) Nuuk and BGMV

12. RUNWAY PHYSICAL CHARACTERISTICS

RWY designator	TRUE BRG	Dimension of RWY	Strength and surface of RWY and SWY	THR coordinates	THR elevation
					TDZ elevation
1	2	3	4	5	6
14	111.22°T 133°M	5906 x 148 FT	Gravel	72°14'25.78"N 023°57'26.89"W	56 FT Not avbl
32	291.26°T 313°M			72°14'04.74"N 023°54'29.52"W	30 FT Not avbl

	Slope of RWY-SWY	SWY dimensions	CWY dimensions	Strip dimensions	OFZ	Remarks
	7	8	9	10	11	12
14	Less than 1%	NIL	NIL	NIL	NIL	See below *)
32						

*) Available runway length is 5906 FT (1800 m). The terrain off the runway ends is not suitable as safety areas (ditches and rocks). Undershooting or overrunning the runway may cause substantial damage to the aircraft. Any operator requirements for safety zones must be applied in accordance with company rules and contained within the available runway length.

13. DECLARED DISTANCES

RWY Designator	TORA (ft)	TODA (ft)	ASDA (ft)	LDA (ft)	Remarks
1	2	3	4	5	6
14	5906	5906	5906	5906	
32	5906	5906	5906	5906	

14. APPROACH AND RUNWAY LIGHTING

RWY	APP LGT	THR	PAPI	TDZ LGT	RWY CL	RWY EDGE	RWY END	OVRN	Rem.
14	No lights								
32									