



Forsvaret

Address: Herningvej 30
DK-7470 Karup J
D E N M A R K
Telephone: +45 728 11516
AFTN: EKMCYOYX
E-mail: FKO-KTP-F-AIM@mil.dk
www.flv.dk/milaim

MIL AIP DENMARK

AIR COMMAND DENMARK
MIL AIM

**Amendment No. 236
16 JUN 2022**

INSERT THE FOLLOWING PAGES:

GEN

GEN 0.4-1/ 16 JUN 2022
GEN 0.4-2 16 JUN 2022
GEN 0.4-3/ 16 JUN 2022
GEN 0.4-4 16 JUN 2022
GEN 0.4-5 16 JUN 2022
GEN 1.3-1 16 JUN 2022
GEN 3.2-1 16 JUN 2022

ENR

ENR 3.5-2 16 JUN 2022
ENR 5.2-7 16 JUN 2022
ENR 5.3-5 16 JUN 2022

AD

EKYT
TACAN 08L CAT AB 16 JUN 2022

DESTROY THE FOLLOWING PAGES:

GEN

GEN 0.4-1/ 19 MAY 2022
GEN 0.4-2 19 MAY 2022
GEN 0.4-3/ 19 MAY 2022
GEN 0.4-4 19 MAY 2022
GEN 0.4-5 19 MAY 2022
GEN 1.3-1 24 FEB 2022
GEN 3.2-1 24 FEB 2022

ENR

ENR 3.5-2 24 FEB 2022
ENR 5.2-7 24 FEB 2022
ENR 5.3-5 24 FEB 2022

AD

EKYT
TACAN 08L CAT AB 19 MAY 2022

END

BLANK

GEN 0.4 CHECKLIST OF AIP PAGES

PAGE	DATE	PAGE	DATE
GEN		2.5-5	24 FEB 2022
GEN0		2.6-1	24 FEB 2022
0.1-1	24 FEB 2022	2.6-2	24 FEB 2022
0.1-2	24 FEB 2022	2.6-3	24 FEB 2022
0.1-3	24 FEB 2022	2.7-1	24 FEB 2022
0.1-4	24 FEB 2022	2.7-2	24 FEB 2022
0.2-1	24 FEB 2022	2.7-3	24 FEB 2022
0.3-1	19 MAY 2022	2.7-4	24 FEB 2022
0.4-1	16 JUN 2022	2.7-5	24 FEB 2022
0.4-2	16 JUN 2022	2.7-6	24 FEB 2022
0.4-3	16 JUN 2022	2.7-7	24 FEB 2022
0.4-4	16 JUN 2022	2.7-8	24 FEB 2022
0.4-5	16 JUN 2022	2.7-9	24 FEB 2022
0.5-1	24 FEB 2022	2.8-1	24 FEB 2022
0.5-2	19 MAY 2022	2.8-2	24 FEB 2022
0.5-3	24 MAR 2022	2.8-3	24 FEB 2022
0.6-1	24 FEB 2022	2.8-4	24 FEB 2022
0.6-2	24 FEB 2022	2.8-5	21 APR 2022
		2.9-1	24 FEB 2022
GEN1		2.10-1	24 FEB 2022
1.1-1	24 FEB 2022		
1.2-1	24 FEB 2022	GEN3	
1.2-2	24 FEB 2022	3.1-1	24 FEB 2022
1.3-1	16 JUN 2022	3.2-1	16 JUN 2022
1.7-1	24 FEB 2022	3.3-1	24 FEB 2022
1.7-2	24 MAR 2022	3.3-2	24 FEB 2022
		3.4-1	24 FEB 2022
GEN2		3.4-2	24 FEB 2022
2.1-1	24 FEB 2022	3.4-3	24 FEB 2022
2.1-2	24 FEB 2022	3.5-1	24 FEB 2022
2.2-1	24 FEB 2022	3.5-2	24 FEB 2022
2.2-2	19 MAY 2022	3.6-1	19 MAY 2022
2.2-3	24 MAR 2022	3.6-2	24 FEB 2022
2.2-4	24 FEB 2022	3.6-3	24 FEB 2022
2.2-5	24 FEB 2022	3.6-4	24 FEB 2022
2.2-6	24 FEB 2022	3.6-5	24 FEB 2022
2.2-7	24 MAR 2022		
2.2-8	24 FEB 2022	GEN4	
2.3-1	24 FEB 2022	Not used	
2.4-1	24 FEB 2022		
2.4-2	24 MAR 2022		
2.4-3	24 FEB 2022		
2.5-1	24 FEB 2022		
2.5-2	24 FEB 2022		
2.5-3	24 FEB 2022		
2.5-4	24 FEB 2022		

PAGE	DATE	PAGE	DATE
ENR		ENR2	
ENR0		2.1-1	24 FEB 2022
0.1-1	24 FEB 2022	2.1-2	24 FEB 2022
0.1-2	24 MAR 2022	2.1-3	19 MAY 2022
0.1-3	24 FEB 2022	2.1-4	19 MAY 2022
		2.1-5	19 MAY 2022
ENR1		2.1-6	24 FEB 2022
1.1-1	24 FEB 2022	2.2-1	19 MAY 2022
1.1-2	24 MAR 2022	2.2-2	19 MAY 2022
1.1-3	24 FEB 2022	2.2-3	24 MAR 2022
1.1-4	21 APR 2022	2.3-1	24 MAR 2022
1.2-1	24 FEB 2022	2.3-2	24 MAR 2022
1.2-2	24 FEB 2022	2.3-3	21 APR 2022
1.3-1	21 APR 2022	2.3-4	19 MAY 2022
1.4-1	24 FEB 2022	2.3-5	19 MAY 2022
1.4-2	24 MAR 2022	2.3-6	24 MAR 2022
1.5-1	21 APR 2022	2.3-7	24 FEB 2022
1.6-1	24 FEB 2022		
1.6-2	24 FEB 2022	ENR3	
1.7-1	24 FEB 2022	3.0-1	24 FEB 2022
1.7-2	24 FEB 2022	3.1-1	24 FEB 2022
1.7-3	21 APR 2022	3.2-1	24 FEB 2022
1.8-1	24 FEB 2022	3.3-1	24 FEB 2022
1.9-1	24 FEB 2022	3.3-2	24 FEB 2022
1.9-2	19 MAY 2022	3.3-3	24 FEB 2022
1.9-3	24 FEB 2022	3.3-4	24 FEB 2022
1.9-4	24 MAR 2022	3.3-5	24 FEB 2022
1.9-5	19 MAY 2022	3.3-6	24 FEB 2022
1.9-6	19 MAY 2022	3.3-7	24 FEB 2022
1.10-1	24 FEB 2022	3.3-8	24 FEB 2022
1.10-2	24 FEB 2022	3.3-9	24 FEB 2022
1.10-3	24 FEB 2022	3.3-10	24 FEB 2022
1.10-4	24 FEB 2022	3.3-11	24 FEB 2022
1.10-5	24 FEB 2022	3.3-12	24 MAR 2022
1.10-6	24 FEB 2022	3.3-13	24 MAR 2022
1.10-7	24 FEB 2022	3.3-14	24 MAR 2022
1.10-8	24 FEB 2022	3.3-15	24 FEB 2022
1.10-9	24 FEB 2022	3.3-16	24 FEB 2022
1.10-10	24 FEB 2022	3.3-17	24 FEB 2022
1.10-11	24 FEB 2022	3.3-18	24 MAR 2022
1.10-12	24 FEB 2022	3.3-19	24 FEB 2022
1.10-13	24 FEB 2022	3.3-20	24 FEB 2022
1.10-14	24 FEB 2022	3.3-21	24 FEB 2022
1.10-15	24 FEB 2022	3.3-22	24 FEB 2022
1.10-16	24 FEB 2022	3.4-1	24 FEB 2022
1.10-17	24 FEB 2022	3.4-2	24 FEB 2022
1.10-18	24 FEB 2022	3.4-3	24 FEB 2022
1.10-19	24 FEB 2022	3.4-4	24 FEB 2022
1.10-20	24 FEB 2022		
1.11-1	19 MAY 2022		
1.11-2	24 FEB 2022		

PAGE	DATE	PAGE	DATE
3.4-5	24 FEB 2022	5.1-17	24 MAR 2022
3.4-6	24 FEB 2022	5.1-18	24 MAR 2022
3.4-7	24 FEB 2022	5.2-1	24 FEB 2022
3.4-8	24 FEB 2022	5.2-2	24 FEB 2022
3.4-9	24 FEB 2022	5.2-3	24 FEB 2022
3.4-10	24 FEB 2022	5.2-4	24 FEB 2022
3.4-11	24 FEB 2022	5.2-5	24 MAR 2022
3.4-12	24 FEB 2022	5.2-6	24 FEB 2022
3.4-13	19 MAY 2022	5.2-7	16 JUN 2022
3.4-14	24 MAR 2022	5.2-9	24 FEB 2022
3.5-1	24 FEB 2022	5.2-10	24 FEB 2022
3.5-2	16 JUN 2022	5.2-11	24 FEB 2022
3.6-1	24 FEB 2022	5.3-1	24 FEB 2022
		5.3-2	24 FEB 2022
ENR4		5.3-3	24 FEB 2022
4.1-1	19 MAY 2022	5.3-4	24 FEB 2022
4.1-2	24 FEB 2022	5.3-5	16 JUN 2022
4.2-1	24 FEB 2022	5.4-1	19 MAY 2022
4.3-1	24 FEB 2022	5.4-2	24 FEB 2022
4.4-1	24 FEB 2022	5.4-3	24 FEB 2022
4.4-2	24 FEB 2022	5.4-4	24 FEB 2022
4.4-3	24 FEB 2022	5.4-5	24 FEB 2022
4.4-4	24 FEB 2022	5.4-6	24 FEB 2022
4.4-5	24 FEB 2022	5.4-7	24 MAR 2022
4.4-6	24 FEB 2022	5.4-8	24 FEB 2022
4.4-7	24 FEB 2022	5.4-9	24 FEB 2022
4.4-8	24 FEB 2022	5.4-10	24 FEB 2022
4.4-9	24 FEB 2022	5.4-11	24 FEB 2022
4.4-10	24 MAR 2022	5.4-12	24 FEB 2022
4.4-11	24 FEB 2022	5.4-13	24 FEB 2022
4.4-12	24 FEB 2022	5.4-14	24 FEB 2022
4.5-1	24 FEB 2022	5.4-15	24 FEB 2022
		5.4-16	24 FEB 2022
		5.4-17	24 FEB 2022
ENR5		5.5-1	24 FEB 2022
5.1-1	24 FEB 2022	5.5-2	24 FEB 2022
5.1-2	24 FEB 2022	5.5-3	24 FEB 2022
5.1-3	24 FEB 2022	5.5-4	24 FEB 2022
5.1-4	24 FEB 2022	5.5-5	24 FEB 2022
5.1-5	24 FEB 2022	5.5-6	24 FEB 2022
5.1-6	24 FEB 2022	5.5-7	24 FEB 2022
5.1-7	24 FEB 2022	5.5-8	24 FEB 2022
5.1-8	24 FEB 2022	5.5-9	24 FEB 2022
5.1-9	24 MAR 2022	5.5-10	24 FEB 2022
5.1-10	24 FEB 2022	5.5-11	21 APR 2022
5.1-11	24 FEB 2022	5.6-1	24 FEB 2022
5.1-12	24 FEB 2022	5.6-2	24 FEB 2022
5.1-13	24 FEB 2022	5.6-3	24 MAR 2022
5.1-14	24 FEB 2022		
5.1-15	24 FEB 2022	ENR6	
5.1-16	24 FEB 2022	6.1-1	24 FEB 2022

PAGE	DATE	PAGE	DATE
AD		AD 2.1-7	19 MAY 2022
AD0		AD 2.1-8	24 FEB 2022
0.1-1	24 FEB 2022	AD 2.1-9	24 FEB 2022
0.1-2	24 FEB 2022	AD 2.1-10	24 FEB 2022
AD1		AD 2.1-11	24 FEB 2022
1.1-1	24 FEB 2022	ADC	19 MAY 2022
1.2-1	24 FEB 2022	AOC-A RWY 10L	24 FEB 2022
1.2-2	24 FEB 2022	AOC-A RWY 28R	24 FEB 2022
AD2		APDC	24 FEB 2022
2.0-1	24 FEB 2022	VAC	24 FEB 2022
2.0-2	24 FEB 2022	NAC	24 FEB 2022
2.0-3	24 FEB 2022	Glider Areas in TMA	19 MAY 2022
EKKA		ILS or LOC 10L	19 MAY 2022
AD 2.1-1	24 FEB 2022	ILS or LOC Z 10L	19 MAY 2022
AD 2.1-2	24 FEB 2022	HI-VORTAC 10L	19 MAY 2022
AD 2.1-3	24 FEB 2022	VORTAC 10L	19 MAY 2022
AD 2.1-4	24 FEB 2022	RNAV (GNSS) 10L	19 MAY 2022
AD 2.1-5	24 FEB 2022	WAYPOINT LIST 10L	24 FEB 2022
AD 2.1-6	24 FEB 2022	ILS or LOC 28R	19 MAY 2022
AD 2.1-7	19 MAY 2022	ILS or LOC Z 28R	19 MAY 2022
AD 2.1-8	24 FEB 2022	HI-VORTAC 28R	19 MAY 2022
AD 2.1-9	24 FEB 2022	VORTAC 28R	19 MAY 2022
AD 2.1-10	24 FEB 2022	RNAV (GNSS) 28R	19 MAY 2022
ADC	19 MAY 2022	WAYPOINT LIST 28R	24 FEB 2022
AOC-A 09R	24 FEB 2022	EKYT	
PATC 27L	24 FEB 2022	AD 2.1-1	24 FEB 2022
VAC	24 FEB 2022	AD 2.1-2	24 FEB 2022
Glider Areas in TMA	24 FEB 2022	AD 2.1-3	24 FEB 2022
ILS or LOC 09R	19 MAY 2022	AD 2.1-4	24 FEB 2022
COPTER ILS or LOC 09R	19 MAY 2022	AD 2.1-5	24 FEB 2022
HI-TACAN 09R	19 MAY 2022	AD 2.1-6	19 MAY 2022
RNAV (GNSS) 09R	19 MAY 2022	AD 2.1-7	19 MAY 2022
WAYPOINT LIST 09R	24 FEB 2022	AD 2.1-8	24 FEB 2022
ILS or LOC 27L	19 MAY 2022	AD 2.1-9	19 MAY 2022
COPTER ILS or LOC 27L	19 MAY 2022	ADC	19 MAY 2022
HI-TACAN 27L	19 MAY 2022	AOC-A 08L	24 FEB 2022
RNAV (GNSS) 27L	19 MAY 2022	PATC 26R	24 FEB 2022
WAYPOINT LIST 27L	24 FEB 2022	VAC	24 FEB 2022
EKSP		NAC	24 FEB 2022
AD 2.1-1	24 FEB 2022	VFR-08L	24 FEB 2022
AD 2.1-2	24 FEB 2022	VFR-26R	24 FEB 2022
AD 2.1-3	24 FEB 2022	ILS or LOC 08L (CAT A-B)	19 MAY 2022
AD 2.1-4	24 FEB 2022	ILS or LOC 08L (CAT C-E)	19 MAY 2022
AD 2.1-5	24 FEB 2022	HI-TACAN 08L	19 MAY 2022
AD 2.1-6	24 FEB 2022	TACAN 08L (CAT A-B)	16 JUN 2022
		TACAN 08L (CAT C-E)	19 MAY 2022
		RNAV (GNSS) 08L	19 MAY 2022
		WAYPOINT LIST 08L	24 FEB 2022

PAGE	DATE
ILS or LOC 26R (CAT A-B)	19 MAY 2022
ILS or LOC 26R (CAT C-E)	19 MAY 2022
HI-VORTAC 26R	19 MAY 2022
VORTAC 26R (CAT A-B)	19 MAY 2022
VORTAC 26R (CAT C-E)	19 MAY 2022
RNAV (GNSS) 26R	19 MAY 2022
WAYPOINT LIST 26R	24 FEB 2022

AD 3**BGNO**

AD 3.1-1	24 FEB 2022
AD 3.1-2	24 FEB 2022
AD 3.1-3	24 FEB 2022
AD 3.1-4	24 FEB 2022
AD 3.1-5	24 FEB 2022
ADC	24 FEB 2022
NDB/DME 21	24 FEB 2022
RNAV (GNSS) 21	24 FEB 2022
WP LIST 21	24 FEB 2022

BGMV

AD 3.1-1	24 FEB 2022
AD 3.1-2	24 FEB 2022
AD 3.1-3	21 APR 2022
AD 3.1-4	24 FEB 2022
AD 3.1-5	24 FEB 2022
AD 3.1-6	24 FEB 2022
ADC	24 FEB 2022
RNAV (GNSS) 32	24 FEB 2022
WP LIST 32	21 APR 2022

CHARTS

LFC 1:500.000 Ed. 45	24 MAR 2022
ANC 1:250.000 CPH AREA	28 MAR 2019

INTENTIONALLY LEFT BLANK

**GEN 1.3 ENTRY AND TRANSIT REGULATIONS FOR MILITARY
AIRCRAFT OF NON-NATO COUNTRIES
FLYING INTO AND OVER DANISH TERRITORY**

1. If exemption has not been granted by special agreement, entry of Danish territory by non-NATO military aircraft is subject to prior diplomatic clearance. Application for flights with military aircraft must be sent through diplomatic channels to Defence Command Denmark.

Postal address: DEFENCE COMMAND DENMARK
JOINT OPERATIONS STAFF
Air Operations (J3AIR)
Herningvej 30
DK-7470 Karup J.
Denmark
Email: flight.clearance.dnk@mil.dk

2. Subject requests are to be forwarded not later than 10 days in advance of the flight – 15 days if the flight is carrying dangerous goods. Applicants must use the form provided at:

<http://www.flv.dk/milaim/diploform.doc>

Diplomatic Clearance Number (DCN) must be inserted in Item 18 of the ICAO flight plan.

NOTE: Special Attention is drawn to the Danish island Bornholm, situated in the Baltic Sea in Malmö FIR. MIL aircraft of non-NATO countries overflying Bornholm is subject to prior diplomatic clearance according to the above.

INTENTIONALLY LEFT BLANK

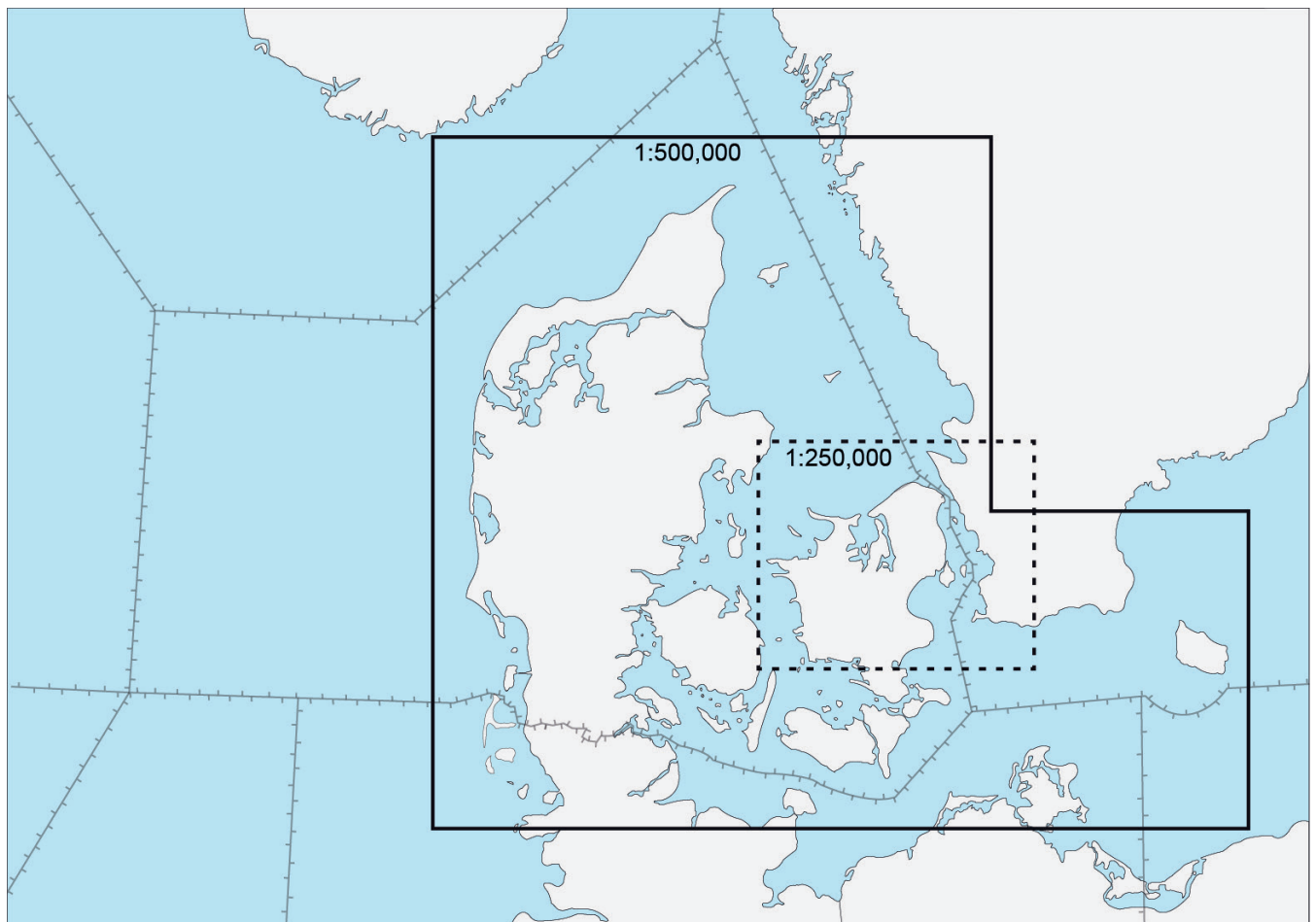
3.2 AERONAUTICAL CHARTS

1. The following Aeronautical charts are a co-operative project of Royal Danish Air Force and the Danish Civil Administration.

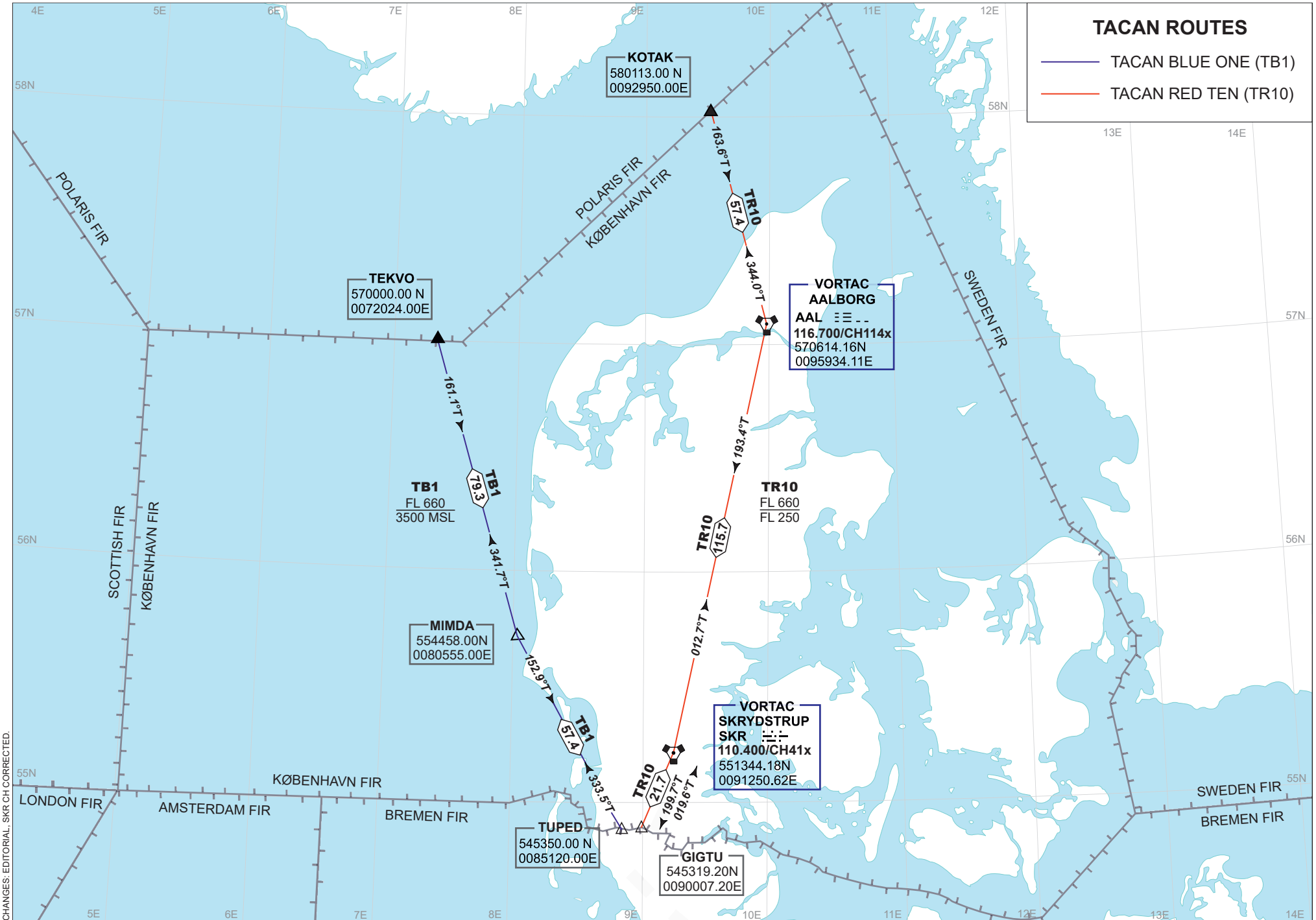
1.1 Low Flying Chart - RDAF 1:500.000 covering mainly the danish landmass including the danish island Bornholm in the Baltic Sea.

1.2 Special Chart - Copenhagen area 1:250.000 covering Copenhagen area including airspace delegated from Malmoe ACC, Sweden.

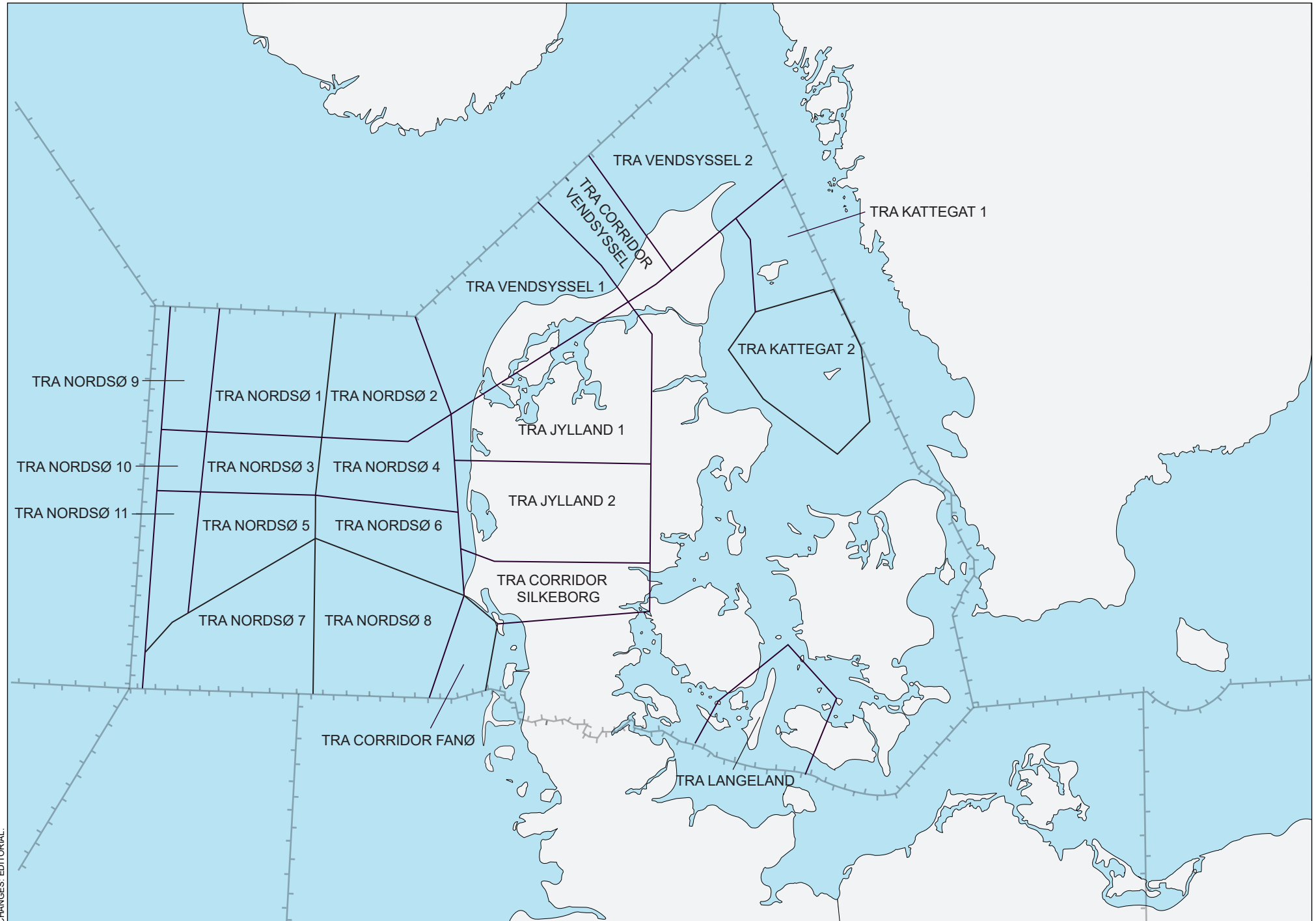
The charts are included in the AIP after the AD 3 section.



BLANK

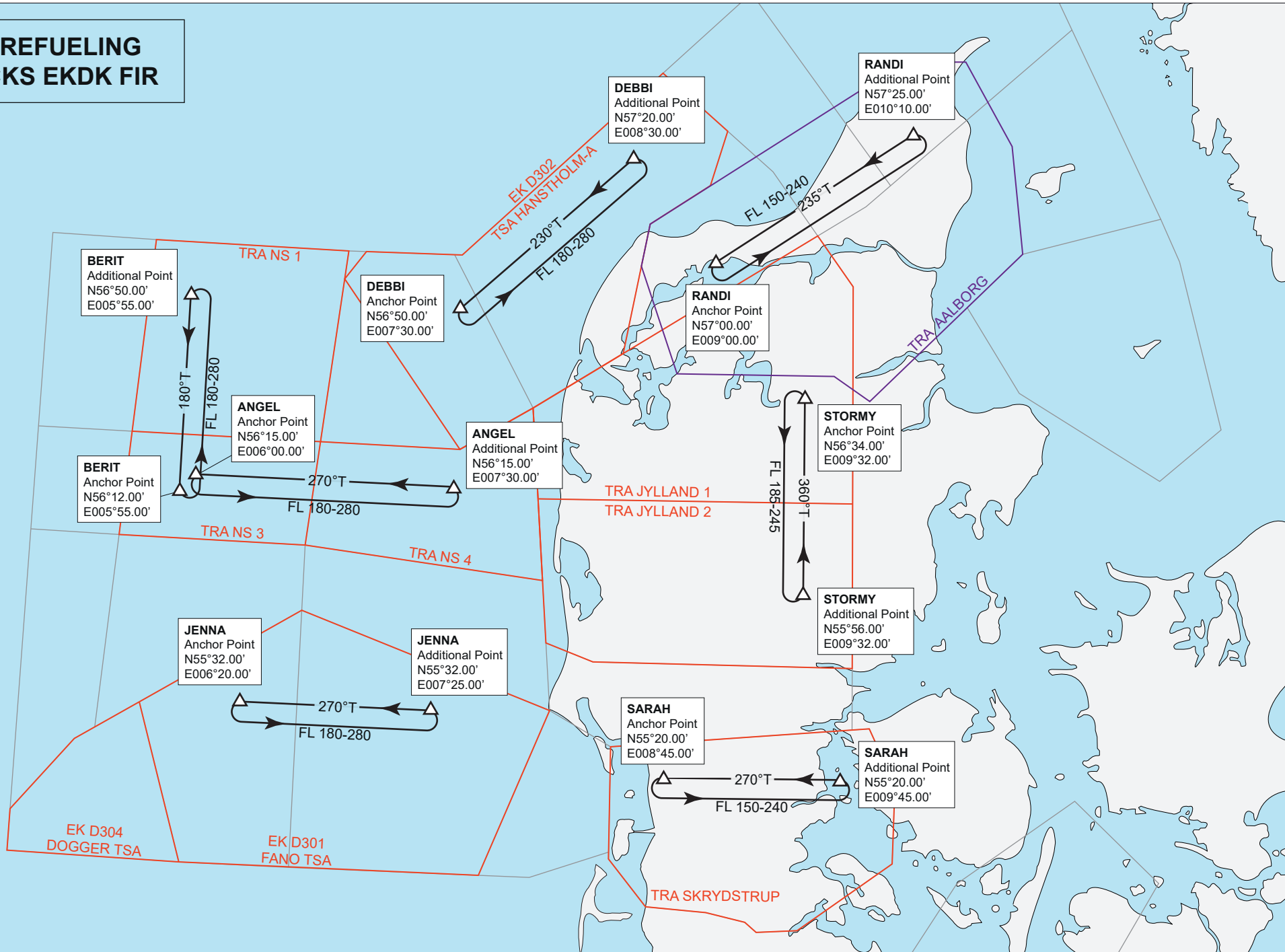


CHANGES: EDITORIAL: SKR CH CORRECTED.



CHANGES EDITORIAL

AIR REFUELING TRACKS EKDK FIR



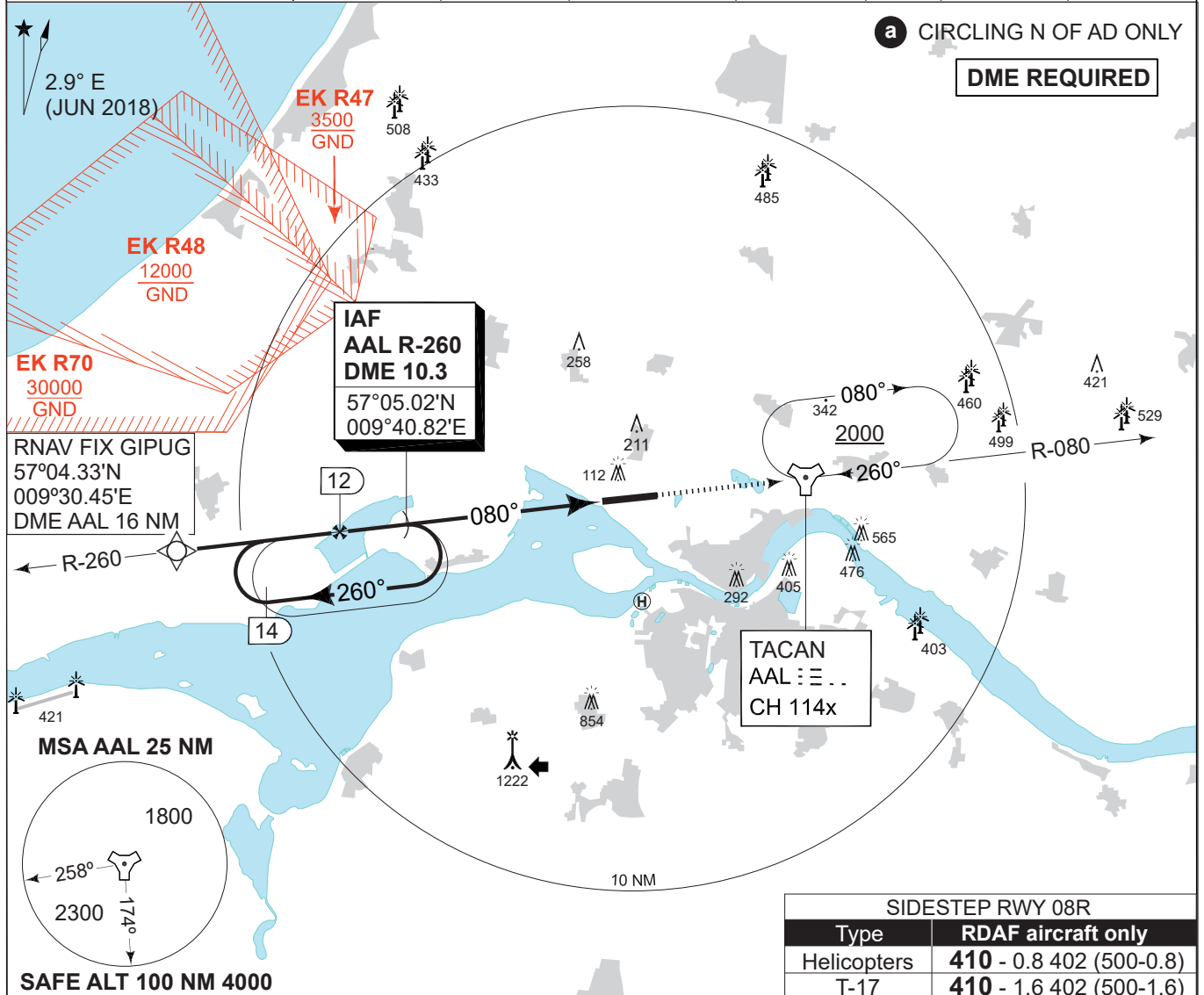
CHANGES: EDITORIAL.

MIPS INSTRUMENT APPROACH CHART

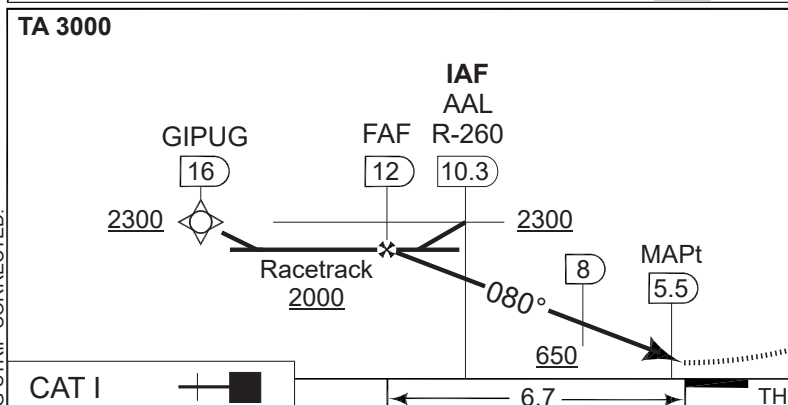
**TACAN RWY 08L (Cat. A-B)
AALBORG (EKYT)**

AD ELEV 10

COPENHAGEN CONTROL 259.375 124.550		AALBORG ATIS 120.475		AALBORG APPROACH 362.450 123.975		AALBORG TOWER 353.525 118.300	
TACAN AAL CH 114x	APP COURSE 080°	FAF ALT 2000 FT	DESCENT GR 292 FT/NM	MDA 310	THR 7	ALS length 470 M	LDA 8694 FT



SIDESTEP RWY 08R	
Type	RDAF aircraft only
Helicopters	410 - 0.8 402 (500-0.8)
T-17	410 - 1.6 402 (500-1.6)



CDFA 2.75° / 4.80%						
DME AAL	12	11	10	9	8	7
DIST THR	6.7	5.7	4.7	3.7	2.7	1.7
ALT	2000	1730	1430	1140	850	560

MISSED APPROACH
Climb on TACAN AAL R-260 to 2000 ft inbound AAL and hold.

CATEGORY	A		B	
	S-TACAN 08L	310 -1000 303 (400-1.0/1.4)		
CIRCLING a	510 -1.5 500 (500-1.5)		510 -1.6 500 (500-1.6)	

TACAN RWY 08L (Cat. A-B) 57°05.57'N **AALBORG (EKYT)**
009°50.95'E

CHANGES: MDA IN BRIEFING STRIP CORRECTED.

AIR COMMAND DENMARK - MIL AIM 16 JUN 2022

BLANK