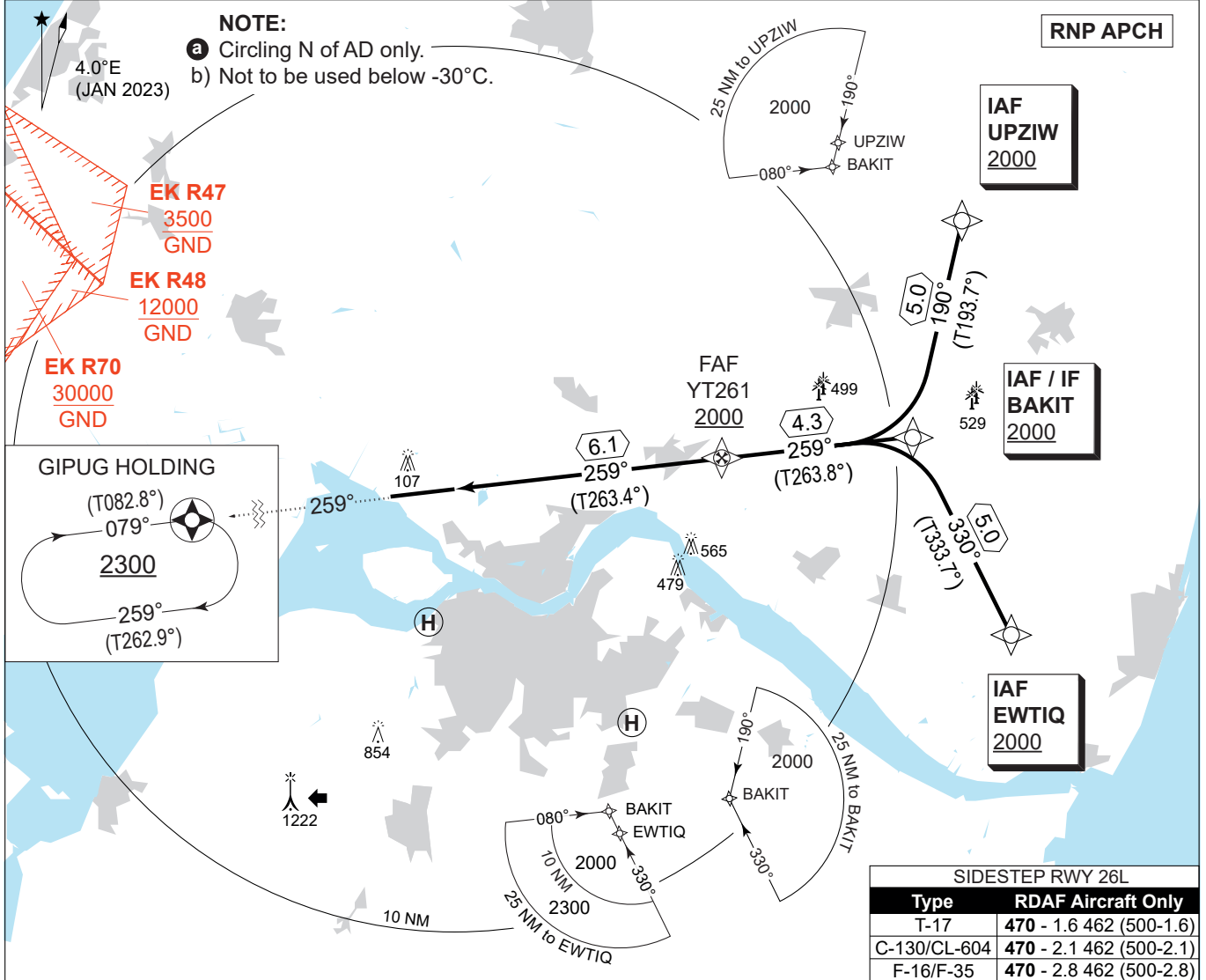


MIPS
INSTRUMENT APPROACH CHART

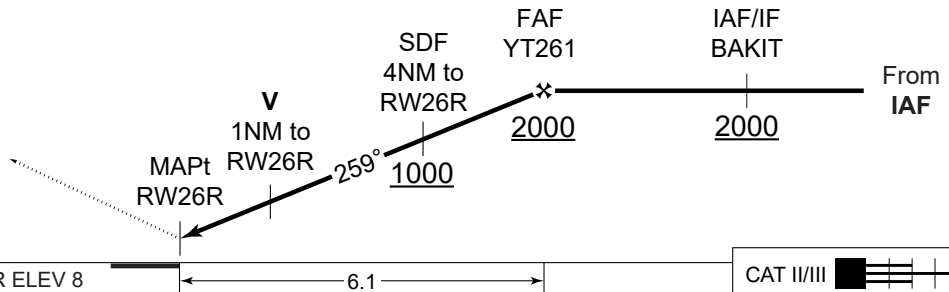
AD ELEV 8

RNP RWY 26R
AALBORG (EKYT)

COPENHAGEN CONTROL 242.650 124.555		AALBORG ATIS 120.480		AALBORG APPROACH 362.450 123.980		AALBORG TOWER 353.525 118.305	
EGNOS CHANNEL 95396 / E26A	APP COURSE 259°	FAF ALT 2000 FT	DESCENT GR 3.00° (5.24%)	DA See CAT	THR ELEV 8	ALS LENGTH 900 M	LDA 8694 FT



MISSED APPROACH:
 Climb straight ahead to GIPUG and join the holding at 2300 FT.



CATEGORY	A	B	C	D	E
LPV	258 - 600 250 (300-0.8/1.3)				
LNAV/VNAV	258 - 600 250 (300-0.8/1.3)	268 - 600 260 (300-0.8/1.3)	278 - 600 270 (300-0.8/1.3)	288 - 600 280 (300-0.8/1.3)	
LNAV	420 - 1200 412 (500-1.2/1.9)				
CIRCLING a	510 - 1.5 502 (600-1.5)	510 - 1.6 502 (600-1.6)	690 - 2.4 682 (700-2.4)	750 - 3.6 742 (800-3.6)	840 - 3.6 832 (900-3.6)

RNP RWY 26R

57°05.57'N
009°50.95'E

AALBORG (EKYT)

CHANGES: NEW AALBORG HOSPITALSBYEN HEMS (PRIVATE HELIPAD) ADDED.

AIR COMMAND DENMARK - MIL AIM 30 OCT 2025