

MIPS
INSTRUMENT APPROACH CHART

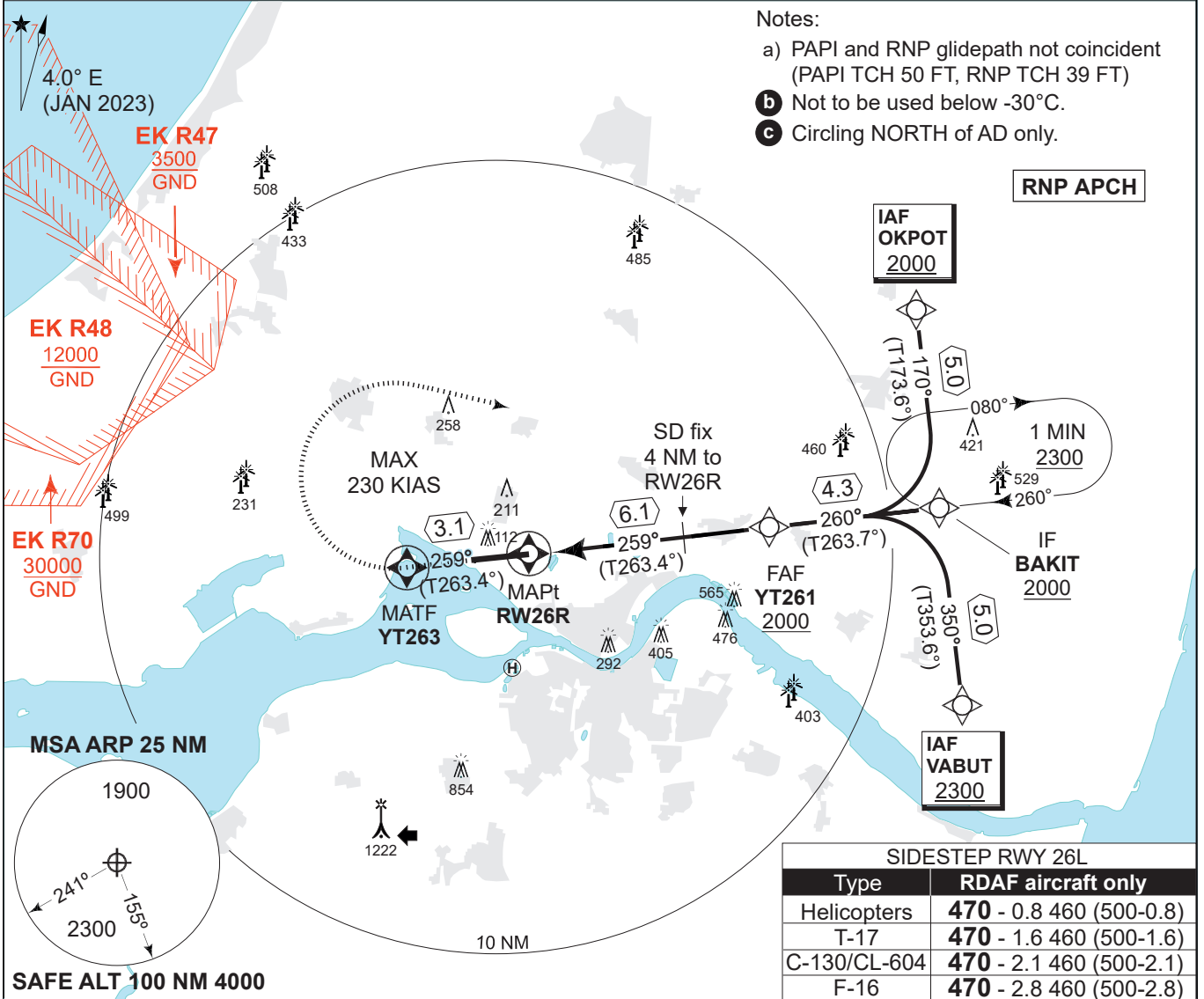
RNP RWY 26R
AALBORG (EKYT)

AD ELEV 10

COPENHAGEN CONTROL 242.650 124.555		AALBORG ATIS 120.480		AALBORG APPROACH 362.450 123.980		AALBORG TOWER 353.525 118.305	
APP COURSE 259°	FAF ALT 2000 FT	Descent GR 3.0° (5.24%)		MINIMA See CAT	THR 10	ALS length 900 M	LDA 8694 FT

Notes:

- a) PAPI and RNP glidepath not coincident (PAPI TCH 50 FT, RNP TCH 39 FT)
- b** Not to be used below -30°C.
- c** Circling NORTH of AD only.

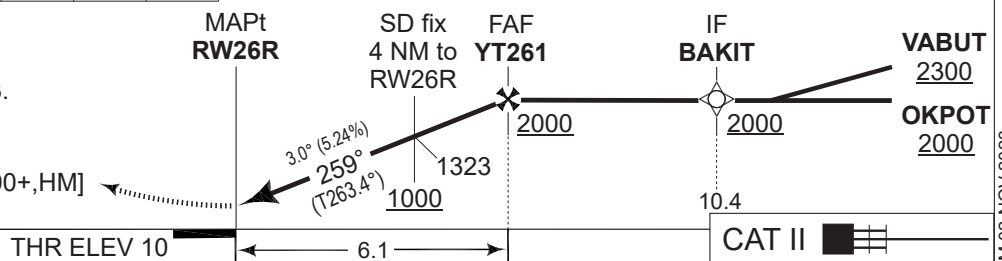


CDFA 3.0° / 5.24%						TA 3000 GS 3.0° TCH 39
DIST TO RW26R	2	3	4	5	6	
NOM. ALTITUDE	690	1010	1330	1650	1960	

MISSED APPROACH

Climb on track to overfly YT263.
Turn right inbound BAKIT and hold at 3000 ft.

RW26R - YT263 - BAKIT [A3000+,HM]



CATEGORY	A	B	C	D	E
LNAV/VNAV (DA) b	260 -600 250 (300-0.8/1.3)			261 - 600 251 (300-0.8/1.3)	279 - 600 269 (300-0.8/1.3)
LNAV (MDA)	420 -1200 410 (500-1.2/1.9)				
CIRCLING c	510 -1.5 500 (500-1.5)	510 -1.6 500 (500-1.6)	690 -2.4 680 (700-2.4)	740 -3.6 730 (800-3.6)	840 -3.6 830 (900-3.6)

RNP RWY 26R

57°05.57'N
009°50.95'E

AALBORG (EKYT)

CHANGES: ATC VHF FREQ CHG.

AIR COMMAND DENMARK - MIL AIM 02 NOV 2023