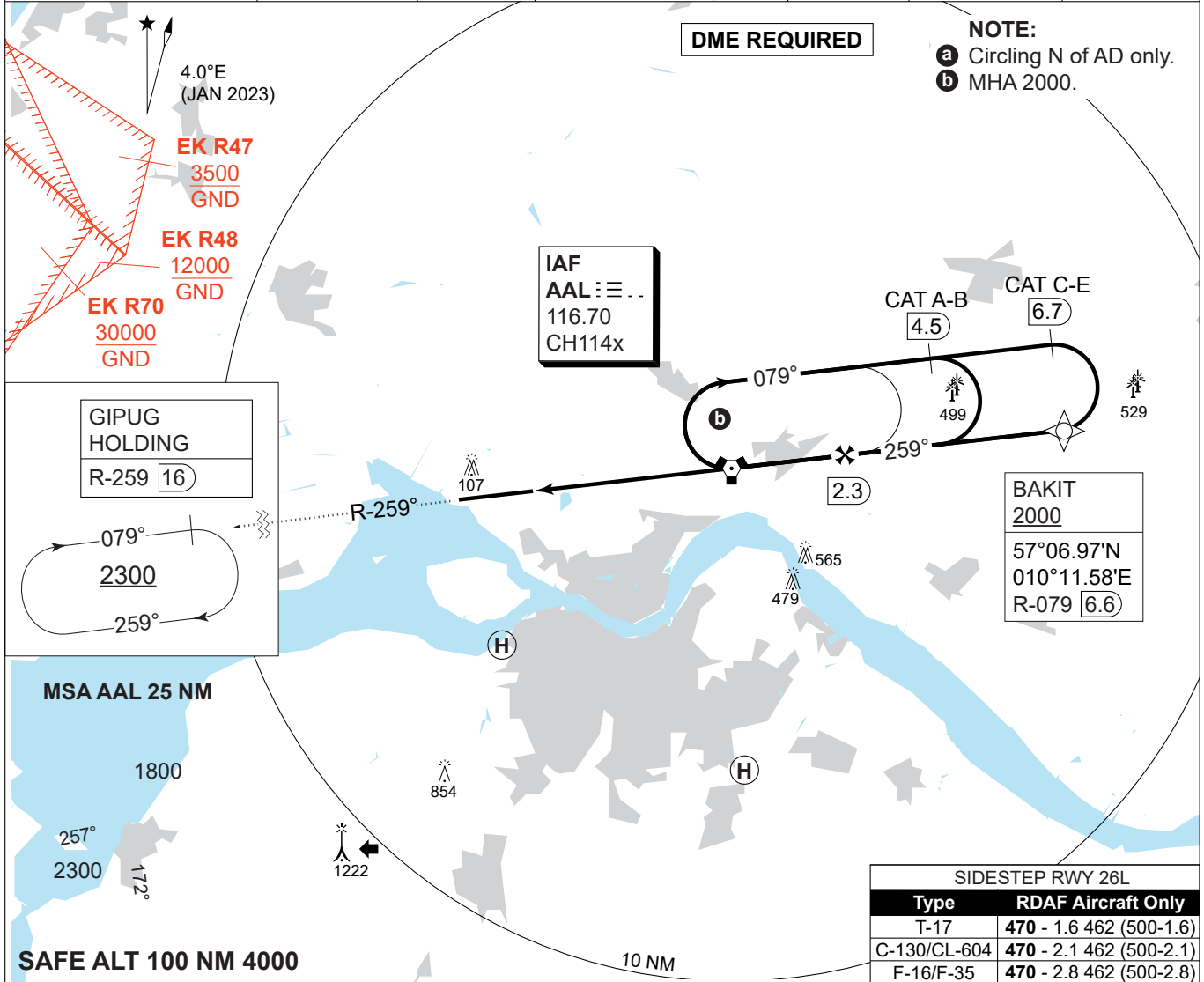


MIPS
INSTRUMENT APPROACH CHART

VORTAC RWY 26R
AALBORG (EKYT)

AD ELEV 8

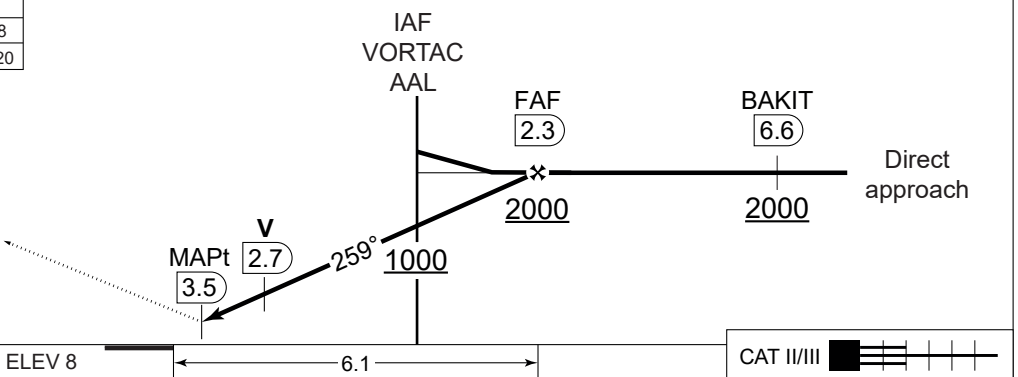
COPENHAGEN CONTROL 242.650 124.555		AALBORG ATIS 120.480		AALBORG APPROACH 362.450 123.980		AALBORG TOWER 353.525 118.305	
VORTAC AAL 116.70/CH 114x	APP COURSE 259°	FAF ALT 2000 FT	DESCENT GR. 3.0° (5.24%)	MDA 420	THR ELEV 8	ALS LENGTH 900 M	LDA 8694 FT



CDFA: 3.00° / 5.24%

DME AAL	2	1	0	1	2
DIST THR	1.8	2.8	3.8	4.8	5.8
ALT	640	960	1280	1600	1920

MISSED APPROACH:
Climb on AAL R-259 to DME 16. Join GIPUG holding at 2300 FT.



CATEGORY	A	B	C	D	E
VORTAC 26R	420 - 1200 412 (500-1.2/1.9)				
CIRCLING a	510 -1.5 502 (600-1.5)	510 -1.6 502 (600-1.6)	690 -2.4 682 (700-2.4)	750 -3.6 742 (800-3.6)	840 -3.6 832 (900-3.6)

VORTAC RWY 26R 57°05.57'N 009°50.95'E **AALBORG (EKYT)**

CHANGES: NEW AALBORG HOSPITALSBYEN HEMS (PRIVATE HELIPAD) ADDED.

AIR COMMAND DENMARK - MIL AIM 30 OCT 2025