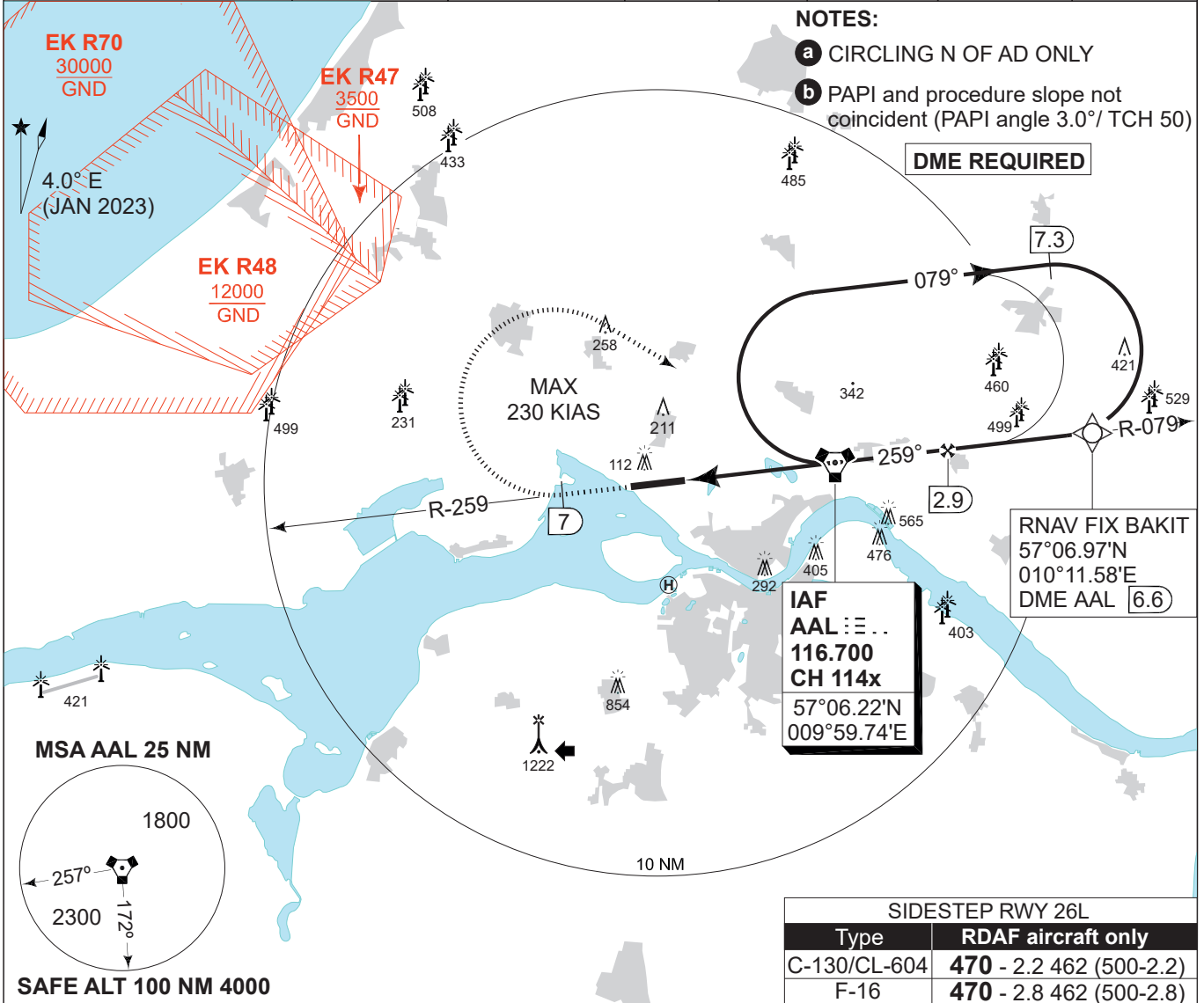


MIPS INSTRUMENT APPROACH CHART

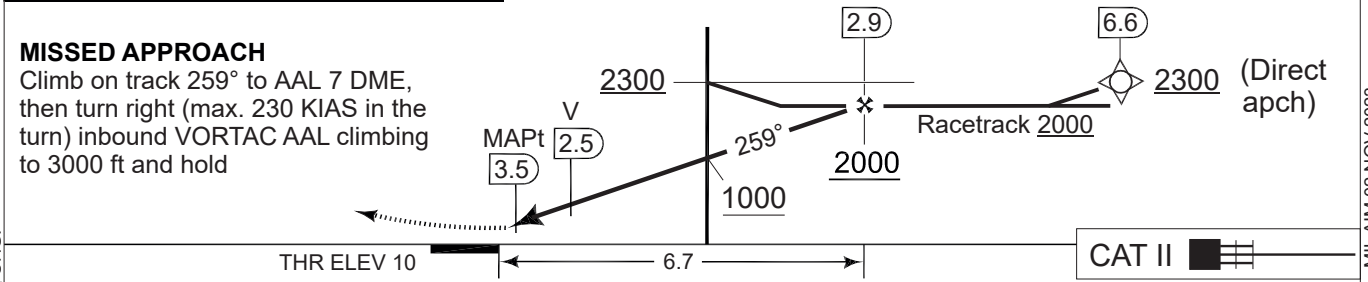
VORTAC RWY 26R (CAT C-E) AALBORG (EKYT)

AD ELEV 10

COPENHAGEN CONTROL 242.650 124.555	AALBORG ATIS 120.480	AALBORG APPROACH 362.450 123.980	AALBORG TOWER 353.525 118.305				
VORTAC AAL CH 114x/116.700	APP COURSE 259°	FAF ALT 2000 FT	GS 2.75°	MDA 420	THR ELEV 10	ALS length 900 M	LDA 8694 FT



CDFA 2.75° / 4.8% b					
DME AAL	2	1	0	1	2
DIST THR	1.8	2.8	3.8	4.8	5.8
ALT	580	870	1170	1460	1750



CATEGORY	C	D	E
VORTAC 26R	420 -1200 410 (500-1.2/1.9)		
CIRCLING a	690 -2.4 680 (700-2.4)	740 -3.6 730 (800-3.6)	840 -3.6 830 (900-3.6)

VORTAC RWY 26R (CAT C-E)

57°05.57'N
009°50.95'E

AALBORG (EKYT)

CHANGES: ATC VHF FREQ CHG.

AIR COMMAND DENMARK - MIL AIM 02 NOV 2023