

MIPS INSTRUMENT APPROACH CHART

VORTAC RWY 26R (CAT A-B) AALBORG (EKYT)

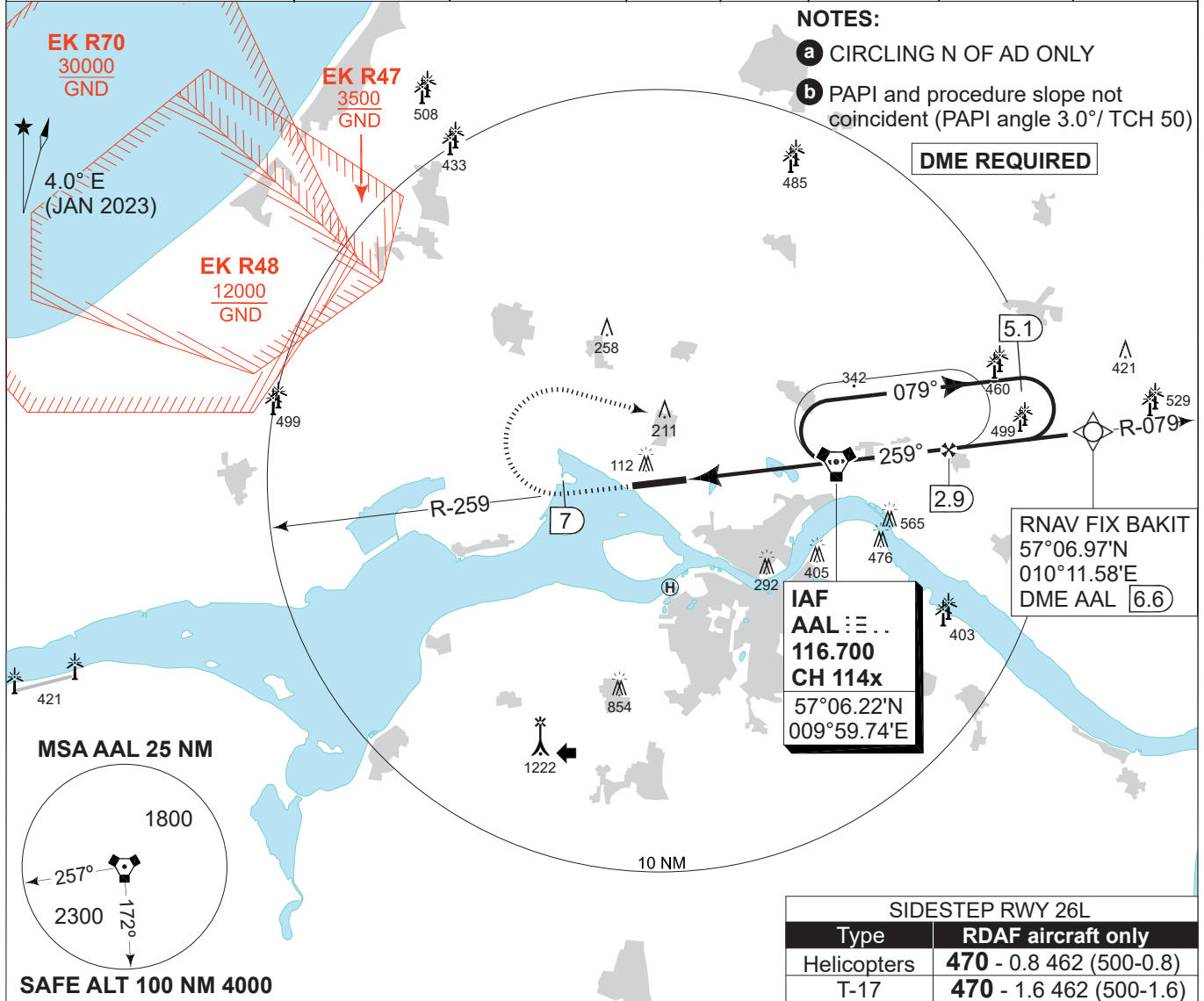
AD ELEV 10

COPENHAGEN CONTROL 242.650 124.555	AALBORG ATIS 120.480	AALBORG APPROACH 362.450 123.980		AALBORG TOWER 353.525 118.305			
VORTAC AAL CH 114x/116.700	APP COURSE 259°	FAF ALT 2000 FT	GS 2.75°	MDA 420	THR ELEV 10	ALS length 900 M	LDA 8694 FT

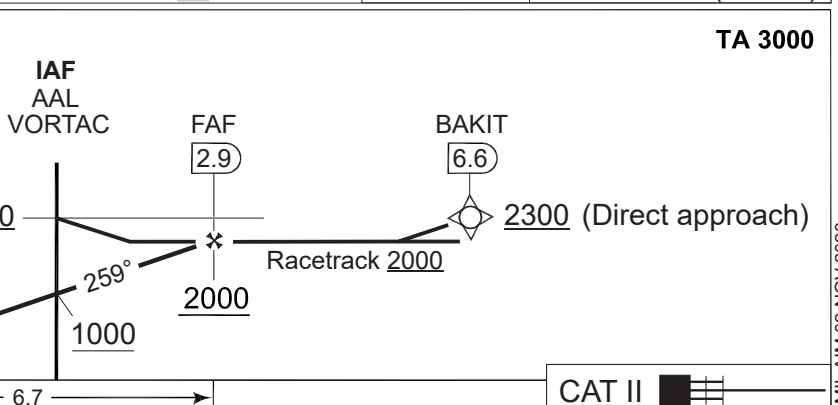
NOTES:

- a** CIRCLING N OF AD ONLY
- b** PAPI and procedure slope not coincident (PAPI angle 3.0°/ TCH 50)

DME REQUIRED



CDFA 2.75° / 4.8% b					
DME AAL	2	1	0	1	2
DIST THR	1.8	2.8	3.8	4.8	5.8
ALT	580	870	1170	1460	1750



CATEGORY	A	B
VORTAC 26R	420 - 1200 410 (500-1.2/1.5)	
CIRCLING a	510 -1.5 500 (500-1.5)	510 -1.6 500 (500-1.6)

VORTAC RWY 26R (CAT A-B) 57°05.57'N 009°50.95'E **AALBORG (EKYT)**

CHANGES: ATC VHF FREQ CHG.

AIR COMMAND DENMARK - MIL AIM 02 NOV 2023