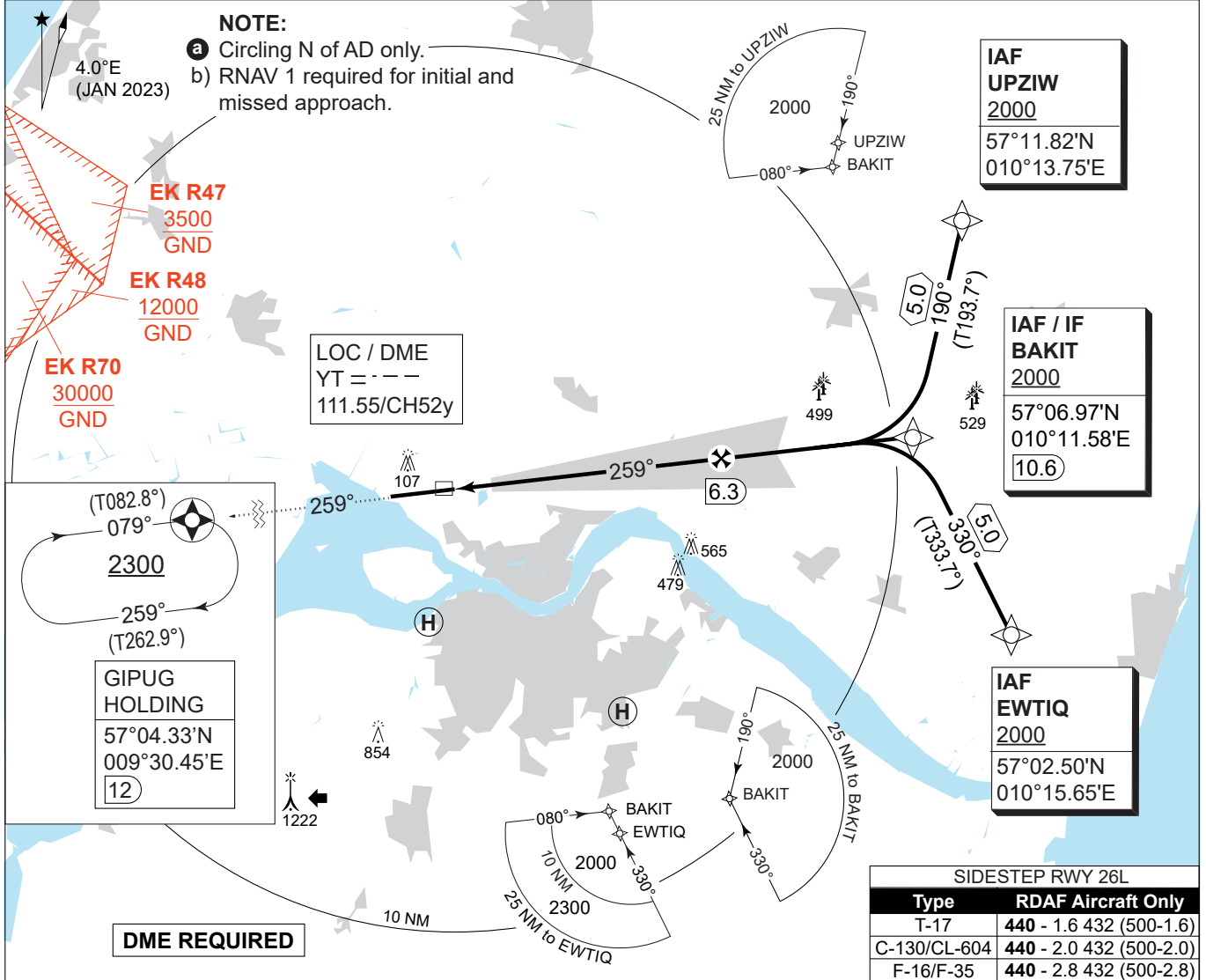


**MIPS**  
**INSTRUMENT APPROACH CHART**

AD ELEV 8

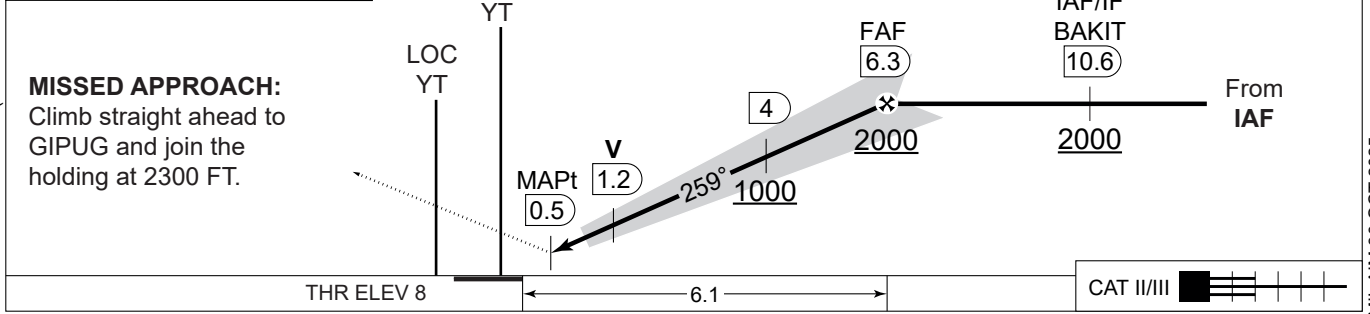
**ILS or LOC RWY 26R**  
**AALBORG (EKYT)**

COPENHAGEN CONTROL 242.650 124.555		AALBORG ATIS 120.480		AALBORG APPROACH 362.450 123.980		AALBORG TOWER 353.525 118.305	
LOC/DME YT 111.55/CH 52y	APP COURSE 259°	GS INCP T ALT 2000 FT	GS 3.00°	DA <b>208</b>	THR ELEV 8	ALS LENGTH 900 M	LDA 8694 FT



**CDFA: 3.00° / 5.24%**

DME YT	2	3	4	5	6
DIST THR	1.8	2.8	3.8	4.8	5.8
ALT	640	960	1280	1600	1920



CATEGORY	A	B	C	D	E
S-CAT I	<b>208</b> - 550 200 (200-0.8/1.2)				
S-CAT II	<b>RA 101</b> (DA 108) - 350 100				N/A
S-LOC 26R	<b>390</b> - 1100 382 (400-1.1/1.8)				
CIRCLING a	<b>510</b> -1.5 502 (600-1.5)	<b>510</b> -1.6 502 (600-1.6)	<b>690</b> -2.4 682 (700-2.4)	<b>750</b> -3.6 742 (800-3.6)	<b>840</b> -3.6 832 (900-3.6)

**ILS or LOC RWY 26R** 57°05.57'N **AALBORG (EKYT)**  
009°50.95'E

CHANGES: NEW AALBORG HOSPITALSBYEN HEMS (PRIVATE HELIPAD) ADDED.

AIR COMMAND DENMARK - MIL AIM 30 OCT 2025