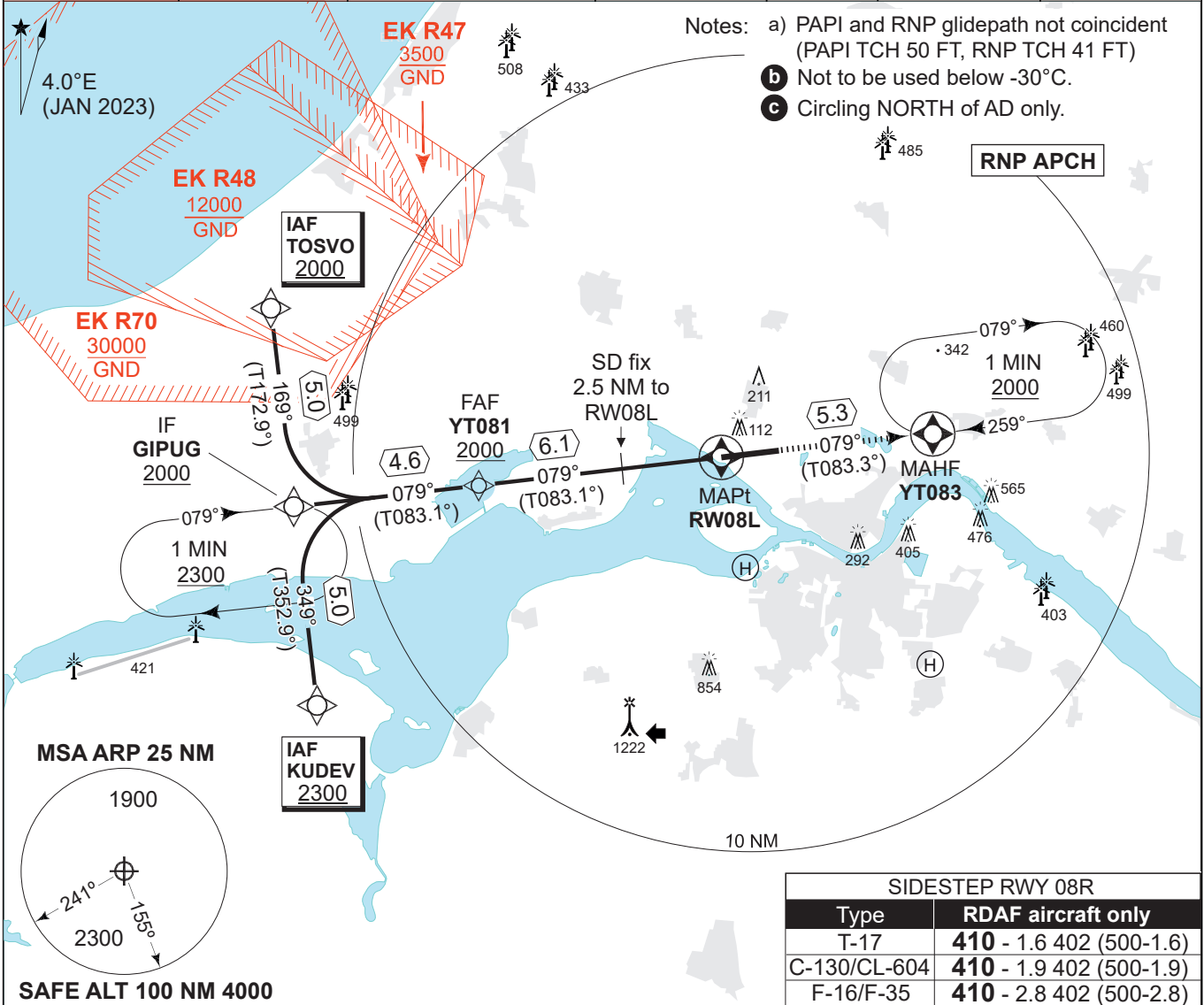


MIPS INSTRUMENT APPROACH CHART

AD ELEV 8

RNP RWY 08L AALBORG (EKYT)

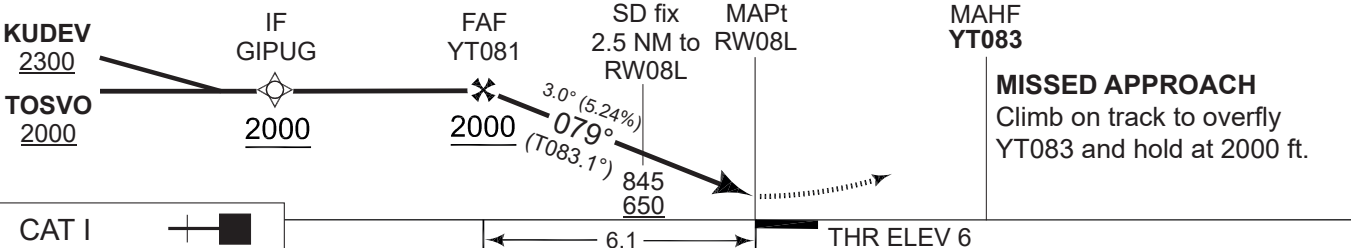
COPENHAGEN CONTROL 242.650 124.555		AALBORG ATIS 120.480		AALBORG APPROACH 362.450 123.980		AALBORG TOWER 353.525 118.305	
APP COURSE 079°	FAF ALT 2000 FT	Descent GR 3.0° (5.24%)		MINIMA See CAT	THR 6	ALS length 470 M	LDA 8694 FT



- Notes:
- a) PAPI and RNP glidepath not coincident (PAPI TCH 50 FT, RNP TCH 41 FT)
 - b) Not to be used below -30°C.
 - c) Circling NORTH of AD only.

SIDESTEP RWY 08R	
Type	RDAF aircraft only
T-17	410 - 1.6 402 (500-1.6)
C-130/CL-604	410 - 1.9 402 (500-1.9)
F-16/F-35	410 - 2.8 402 (500-2.8)

TA 3000 GS 3.0° TCH 41	CDFA 3.0° / 5.24%						
	DIST TO RW08L	6	5	4	3	2	1
	NOM. ALTITUDE	1960	1650	1330	1010	690	370



CATEGORY	A	B	C	D	E
LNAV/VNAV (DA) b	256 -800 250 (300-0.8/1.3)			272 - 900 266 (300-0.9/1.3)	290 - 900 284 (300-0.9/1.4)
LNAV (MDA)	310 -1000 302 (400-1.0/1.4)		330 -1100 322 (400-1.1/1.5)	350 -1200 342 (400-1.2/1.6)	360 -1200 352 (400-1.2/1.6)
CIRCLING c	510 -1.5 502 (600-1.5)	510 -1.6 502 (600-1.6)	690 -2.4 682 (700-2.4)	750 -3.6 742 (800-3.6)	840 -3.6 832 (900-3.6)

RNP RWY 08L 57°05.57'N 009°50.95'E **AALBORG (EKYT)**

CHANGES: NEW AALBORG HOSPITALS-BYEN HELIPAD) ADDED. EDITORIAL.

AIR COMMAND DENMARK - MIL AIM 30 OCT 2025