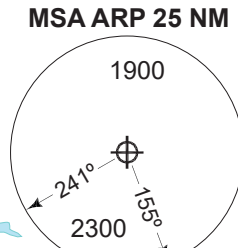
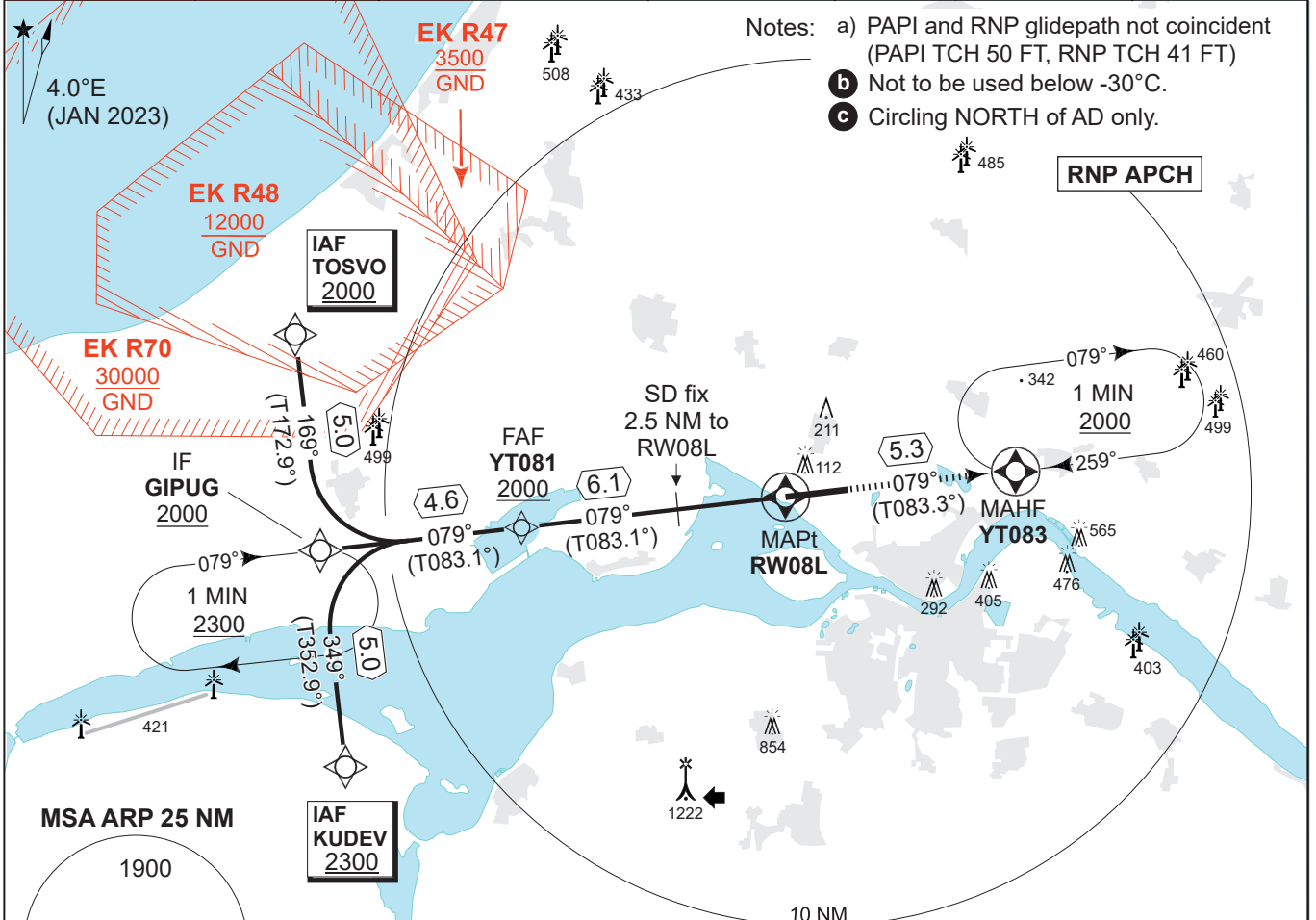


MIPS INSTRUMENT APPROACH CHART

AD ELEV 10

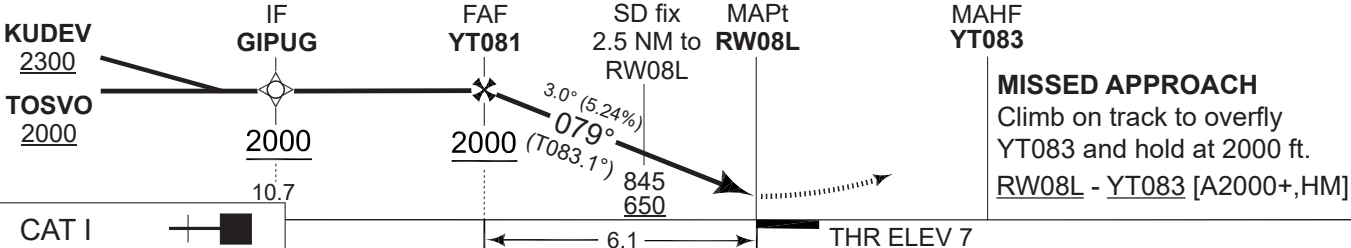
RNP RWY 08L AALBORG (EKYT)

COPENHAGEN CONTROL 242.650 124.555		AALBORG ATIS 120.480		AALBORG APPROACH 362.450 123.980		AALBORG TOWER 353.525 118.305	
APP COURSE 079°	FAF ALT 2000 FT	Descent GR 3.0° (5.24%)		MINIMA See CAT	THR 7	ALS length 470 M	LDA 8694 FT



SIDESTEP RWY 08R	
Type	RDAF aircraft only
Helicopters	410 - 0.8 402 (500-0.8)
T-17	410 - 1.6 402 (500-1.6)
C-130/CL-604	410 - 1.9 402 (500-1.9)
F-16	410 - 2.8 402 (500-2.8)

TA 3000 GS 3.0° TCH 41	CDFA 3.0° / 5.24%						
	DIST TO RW08L	6	5	4	3	2	1
	NOM. ALTITUDE	1960	1650	1330	1010	690	370



MISSED APPROACH
Climb on track to overfly YT083 and hold at 2000 ft.
RW08L - YT083 [A2000+,HM]

MIPS CHANGES: ATC VHF FREQ CHG	CATEGORY	A	B	C	D	E
	LNAV/VNAV (DA) b	257 -800 250 (300-0.8/1.3)			273 - 900 266 (300-0.9/1.3)	291 - 900 284 (300-0.9/1.4)
	LNAV (MDA)	310 -1000 303 (400-1.0/1.4)			330 -1100 323 (400-1.1/1.5)	350 -1200 343 (400-1.2/1.6)
CIRCLING c	510 -1.5 500 (500-1.5)	510 -1.6 500 (500-1.6)	690 -2.4 680 (700-2.4)	740 -3.6 730 (800-3.6)	840 -3.6 830 (900-3.6)	

RNP RWY 08L

57°05.57'N
009°50.95'E

AALBORG (EKYT)

AIR COMMAND DENMARK - MIL AIM 02 NOV 2023