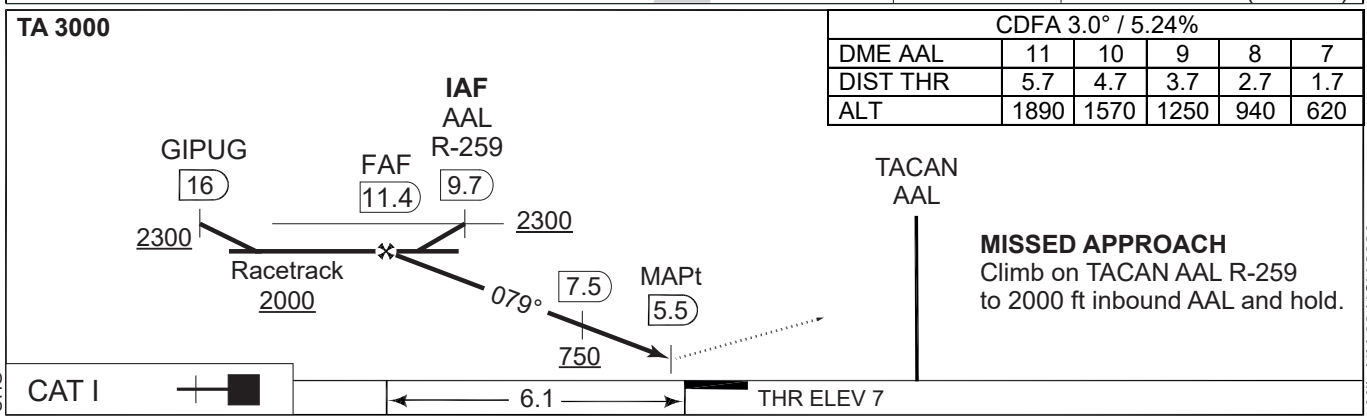
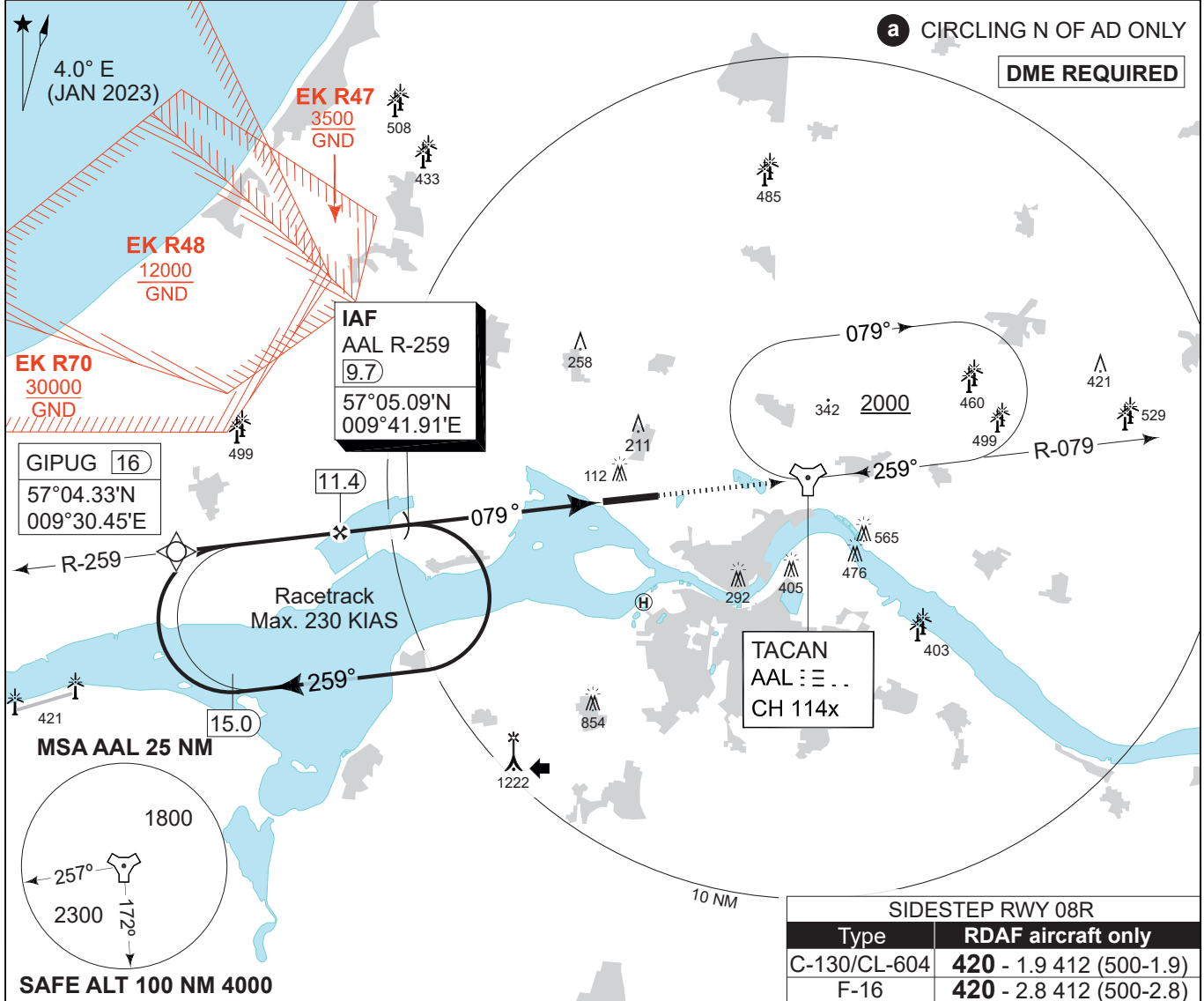


**MIPS**  
**INSTRUMENT APPROACH CHART**

**TACAN RWY 08L (CAT C-E)**  
**AALBORG (EKYT)**

AD ELEV 10

COPENHAGEN CONTROL 242.650 124.555		AALBORG ATIS 120.480		AALBORG APPROACH 362.450 123.980		AALBORG TOWER 353.525 118.305	
TACAN AAL CH 114x	APP COURSE 079°	FAF ALT 2000 FT	DESCENT GR 318 FT/NM	MDA <b>340</b>	THR 7	ALS length 470 M	LDA 8694 FT



MIPS	CATEGORY	C	D	E
	S-TACAN 08L	<b>340</b> -1100 333 (400-1.1/1.5)		
	CIRCLING <b>a</b>	<b>690</b> -2.4 680 (700-2.4)	<b>740</b> -3.6 730 (800-3.6)	<b>840</b> -3.6 830 (900-3.6)

**TACAN RWY 08L (CAT C-E)**      57°05.57'N      **AALBORG (EKYT)**  
009°50.95'E

CHANGES: ATC VHF FREQ CHG

AIR COMMAND DENMARK - MIL AIM 02 NOV 2023