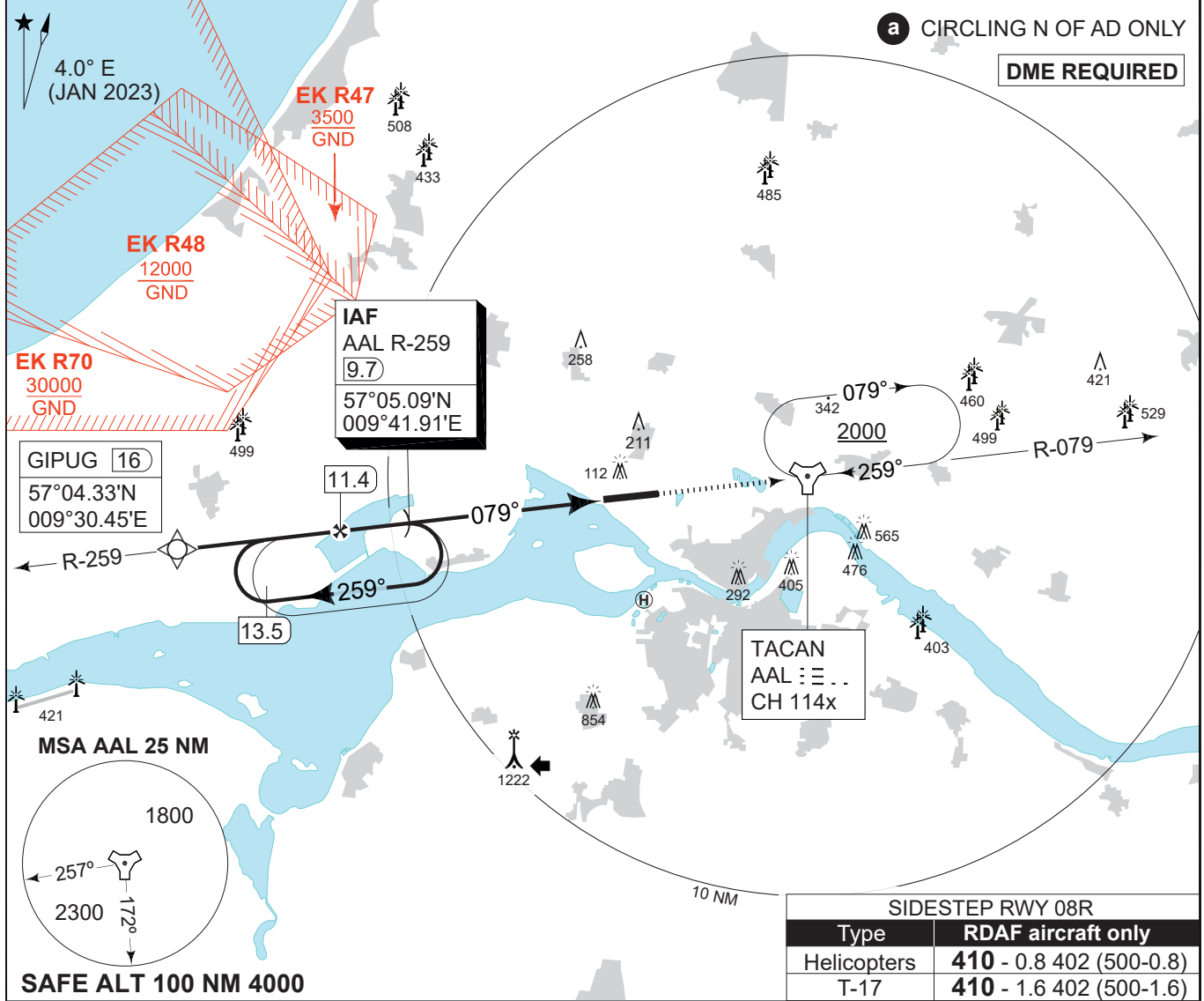


MIPS INSTRUMENT APPROACH CHART

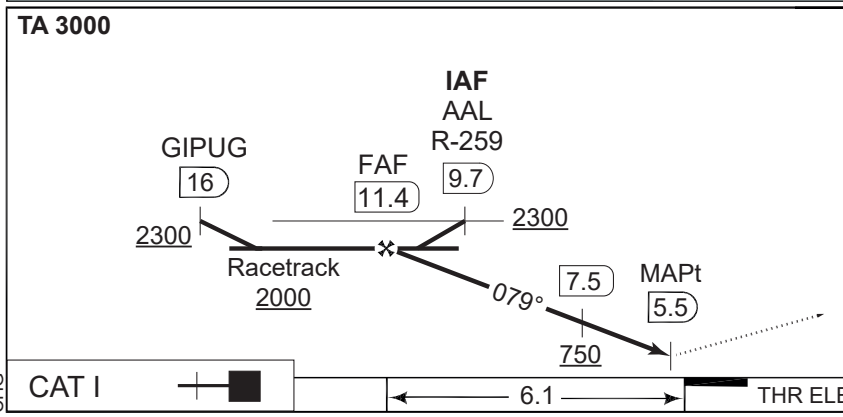
TACAN RWY 08L (CAT A-B) AALBORG (EKYT)

AD ELEV 10

COPENHAGEN CONTROL 242.650 124.555		AALBORG ATIS 120.480		AALBORG APPROACH 362.450 123.980		AALBORG TOWER 353.525 118.305	
TACAN AAL CH 114x	APP COURSE 079°	FAF ALT 2000 FT	DESCENT GR 318 FT/NM	MDA 340	THR 7	ALS length 470 M	LDA 8694 FT



SIDESTEP RWY 08R	
Type	RDAF aircraft only
Helicopters	410 - 0.8 402 (500-0.8)
T-17	410 - 1.6 402 (500-1.6)



	11	10	9	8	7
DME AAL	5.7	4.7	3.7	2.7	1.7
DIST THR	1890	1570	1250	940	620
ALT					

CATEGORY	A	B
S-TACAN 08L	340 -1100 333 (400-1.1/1.5)	
CIRCLING a	510 -1.5 500 (500-1.5)	510 -1.6 500 (500-1.6)

TACAN RWY 08L (CAT A-B) 57°05.57'N 009°50.95'E **AALBORG (EKYT)**

CHANGES: ATC VHF FREQ CHG

AIR COMMAND DENMARK - MIL-AIM 02 NOV 2023