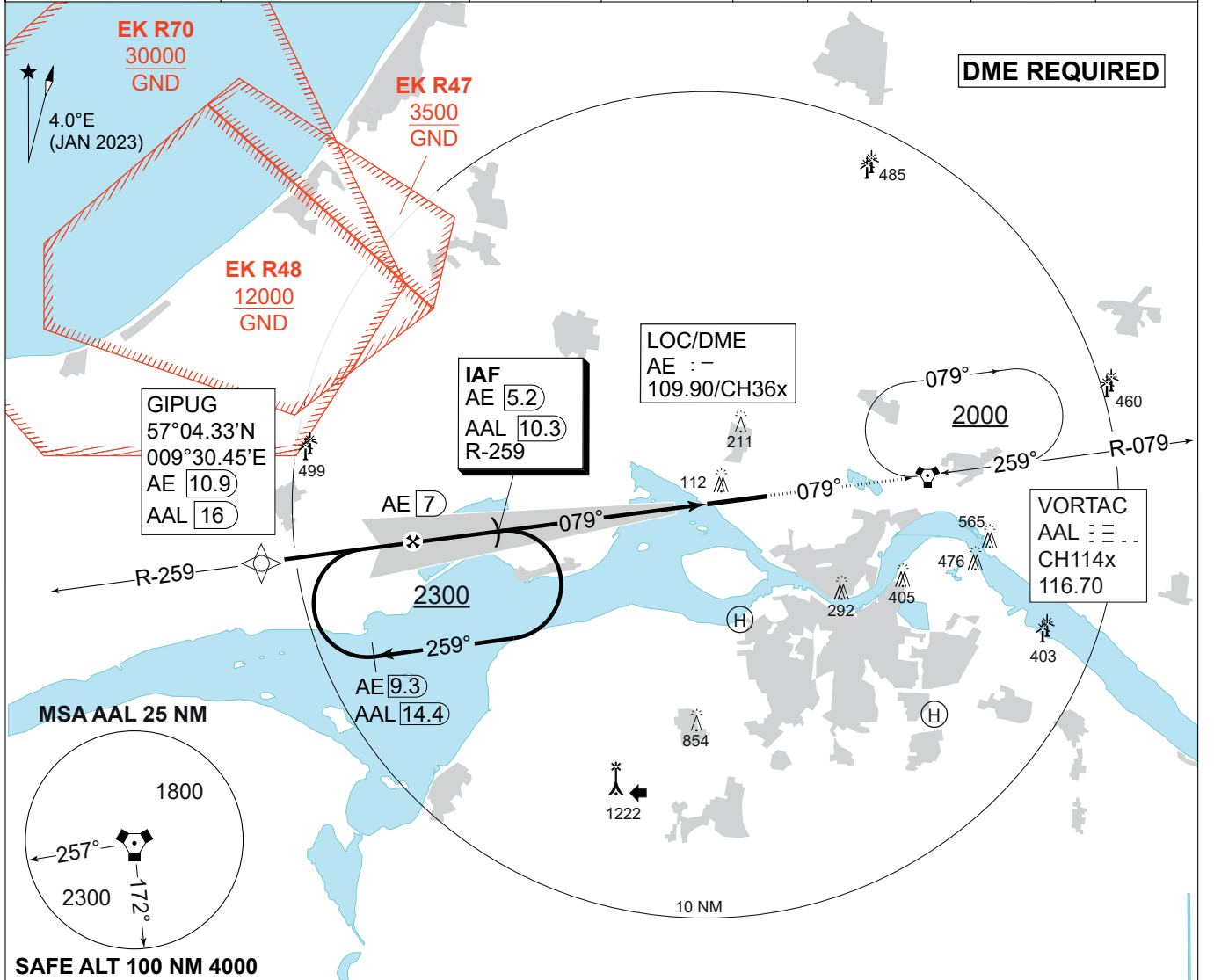


MIPS
INSTRUMENT APPROACH CHART

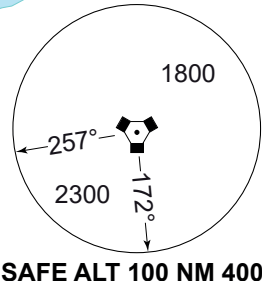
COPTER ILS or LOC RWY 08L
AALBORG (EKYT)

AD ELEV 8

COPENHAGEN CONTROL 242.650 124.555		AALBORG ATIS 120.480		AALBORG APPROACH 362.450 123.980		AALBORG TOWER 353.525 118.305		
LOC/DME AE 109.90/CH 36x	VORTAC AAL CH114x/116.700	APP COURSE 079°	GS INCPT ALT 2300 FT	GS 3.00°	DA 206	THR ELEV 06	ALS LENGTH 470 M	LDA 8694 FT



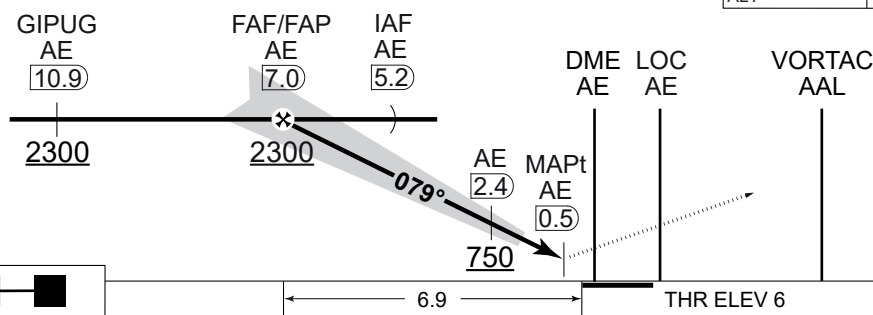
DME REQUIRED



SAFE ALT 100 NM 4000

TA 3000
GS 3.00°
RDH 54

CDFA: 3.00° / 5.24%						
DME AE	6	5	4	3	2	1
DIST THR	5.9	4.9	3.9	2.9	1.9	0.9
ALT	1930	1610	1290	970	650	330



MISSED APPROACH
Climb on track 079° to 2000 ft to AAL VORTAC and hold or as instructed by ATC.

CAT I

CATEGORY	H
H-CAT I	206 - 400 200 (200-0.4/0.8)
H-LOC 08L	300 - 400 292 (300-0.4/0.8)

CHANGES: NEW AALBORG HOSPITALSBYEN HEMS (PRIVATE HELIPAD) ADDED.

AIR COMMAND DENMARK - MIL AIM 30 OCT 2025

COPTER ILS or LOC RWY 08L

57°05.57'N
009°50.95'E

AALBORG (EKYT)