

TERPS INSTRUMENT APPROACH CHART

AD ELEV 10

HI-TACAN RWY 08L AALBORG (EKYT)

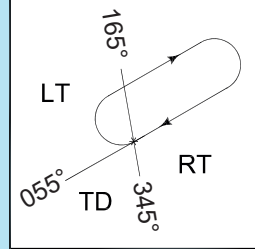
COPENHAGEN CONTROL 242.650 124.555		AALBORG ATIS 120.480		AALBORG APPROACH 362.450 123.980		AALBORG TOWER 353.525 118.305	
TACAN AAL CH 114x	APP COURSE 079°	FAF ALT 2000 FT	DESCENT GR 277 FT/NM	MDA 420	TDZE 8	ALS length 470 M	LDA 8707 FT

NOTE:

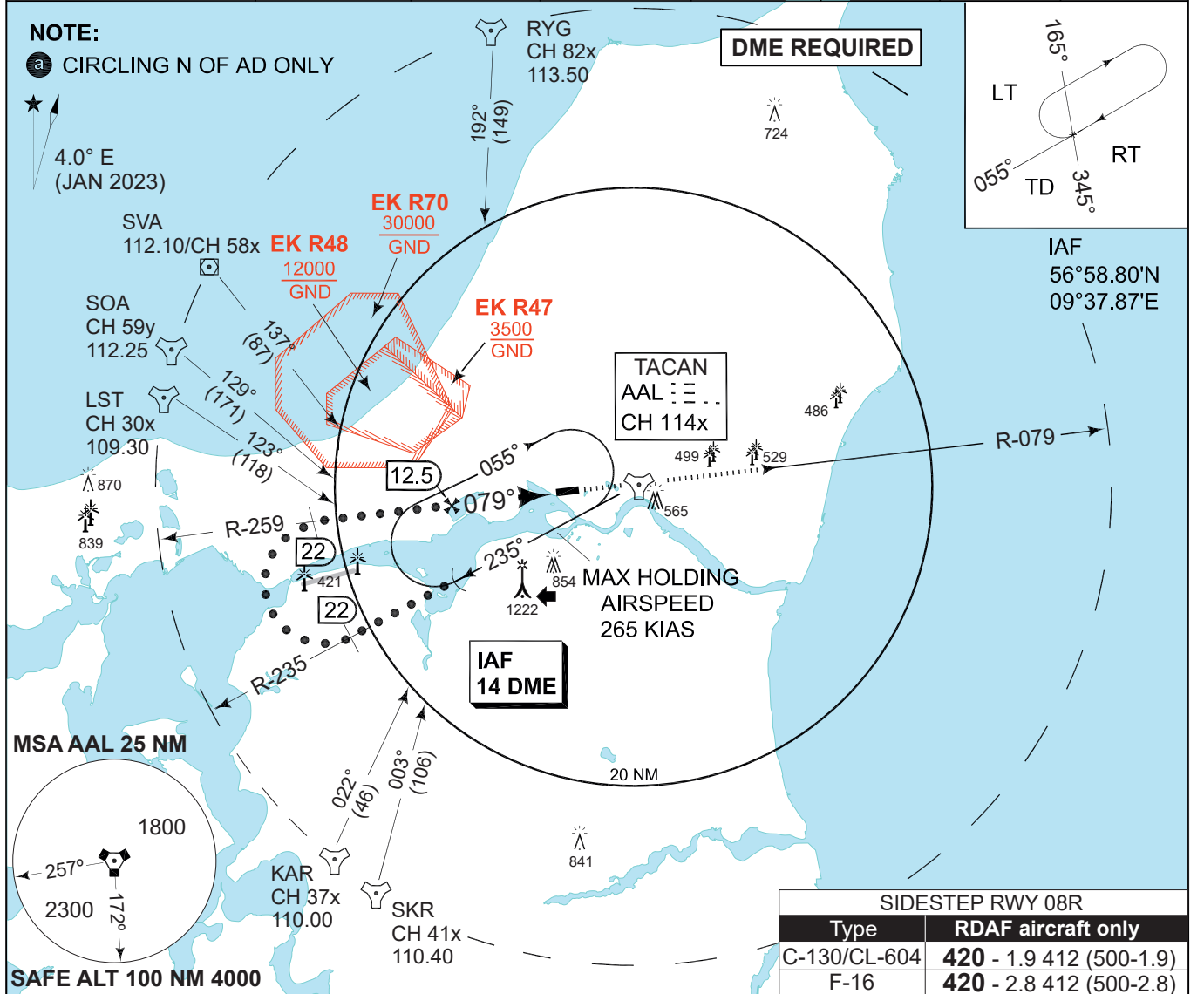
a CIRCLING N OF AD ONLY

4.0° E
(JAN 2023)

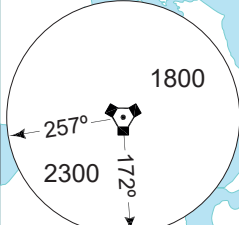
DME REQUIRED



IAF
56°58.80'N
09°37.87'E



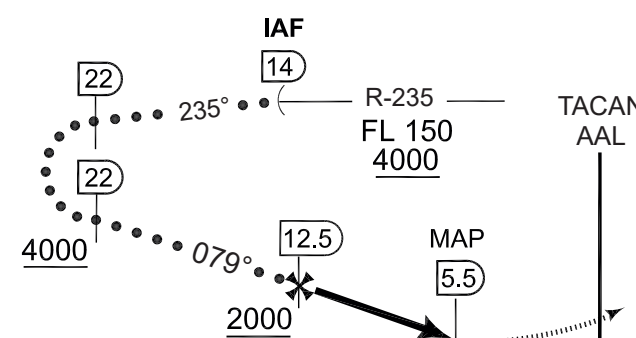
MSA AAL 25 NM



SAFE ALT 100 NM 4000

SIDESTEP RWY 08R	
Type	RDAF aircraft only
C-130/CL-604	420 - 1.9 412 (500-1.9)
F-16	420 - 2.8 412 (500-2.8)

TA 3000



MISSED APPROACH
Climb to 2000 ft inbound
AAL TACAN to hold i.a.w.
ATC instructions.

CAT I

CATEGORY	C		D		E	
	S-TACAN 08L	420	-2000 412 (500-2.0)	420	-2400 412 (500-2.4)	420
CIRCLING a	580	-2400 570 (600-2.4)	580	-2800 570 (600-2.8)	640	-3600 630 (700-3.6)

HI-TACAN RWY 08L

57°05.57'N
009°50.95'E

AALBORG (EKYT)

CHANGES: SKR SYMBOL CHG TO TACAN.

AIR COMMAND DENMARK - MIL AIM 28 DEC 2023