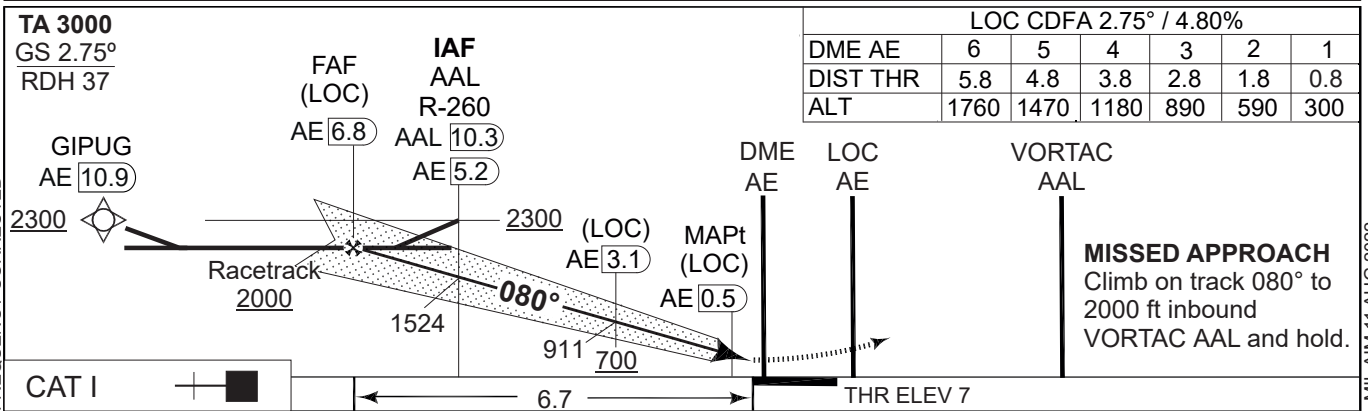
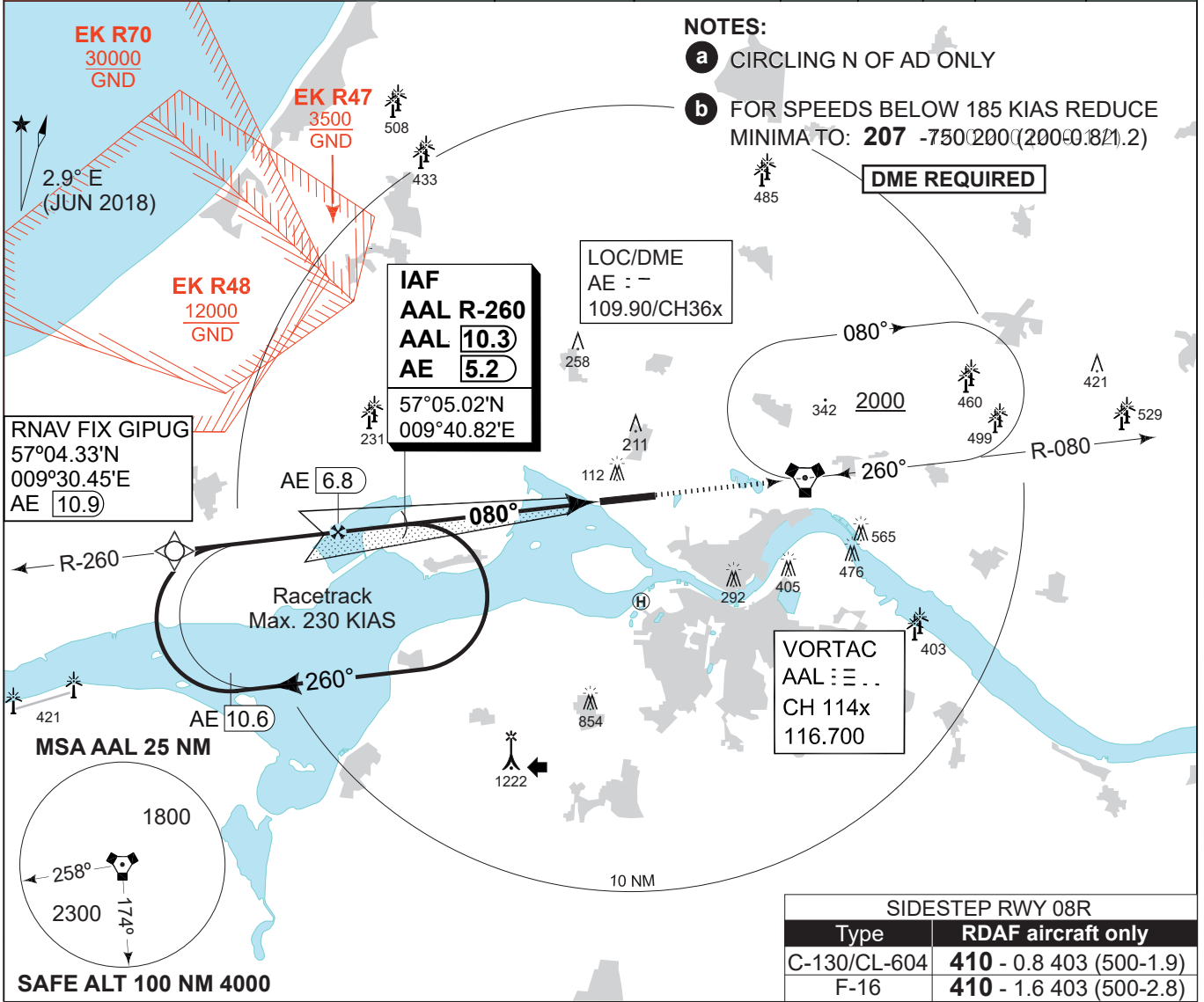


MIPS INSTRUMENT APPROACH CHART

AD ELEV 10

ILS or LOC RWY 08L (Cat. C-E) AALBORG (EKYT)

COPENHAGEN CONTROL 242.650 124.550		AALBORG ATIS 120.475	AALBORG APPROACH 362.450 123.975		AALBORG TOWER 353.525 118.300	
LOC/DME AE 109.90/CH36x	VORTAC AAL CH 114x/116.700	APP COURSE 080°	FAF ALT 2000 FT	GS 2.75°	DA 207	THR 7
ALS length 470 M		LDA 8694 FT				



CHANGES: COPENHAGEN FREQUENCY CORRECTED

AIR COMMAND DENMARK - MIL AIM 11 AUG 2022

CATEGORY	C	D	E
S-ILS 08L	207 -750 200 (200-0.8/1.2)		282 -900 275 (300-0.9/1.3) b
S-LOC 08L	300 -900 293 (300-0.9/1.4)		
CIRCLING a	690 -2.4 680 (700-2.4)	740 -3.6 730 (800-3.6)	840 -3.6 830 (900-3.6)

ILS or LOC RWY 08L (Cat. C-E)

57°05.57'N
009°50.95'E

AALBORG (EKYT)