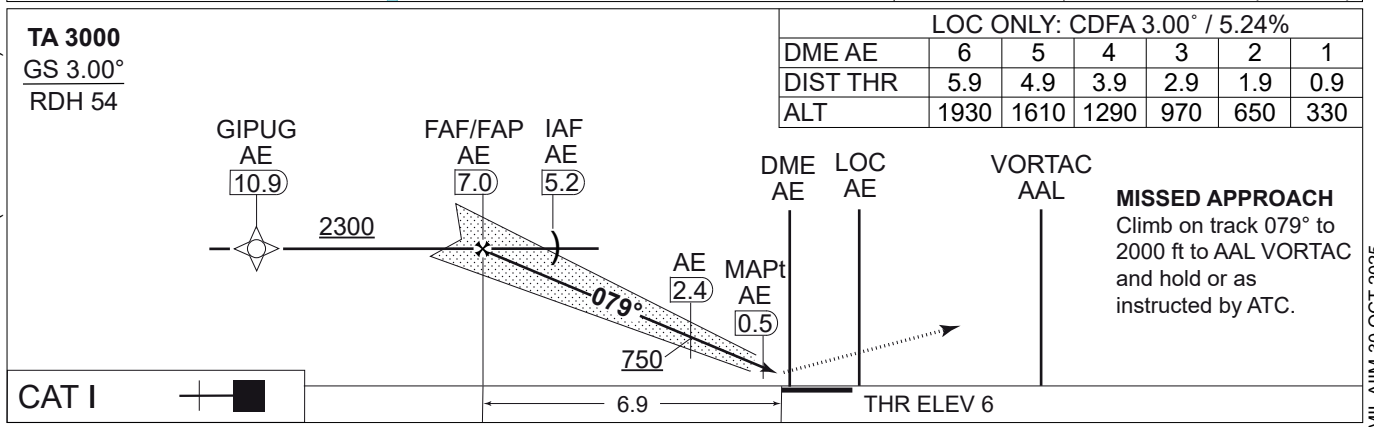
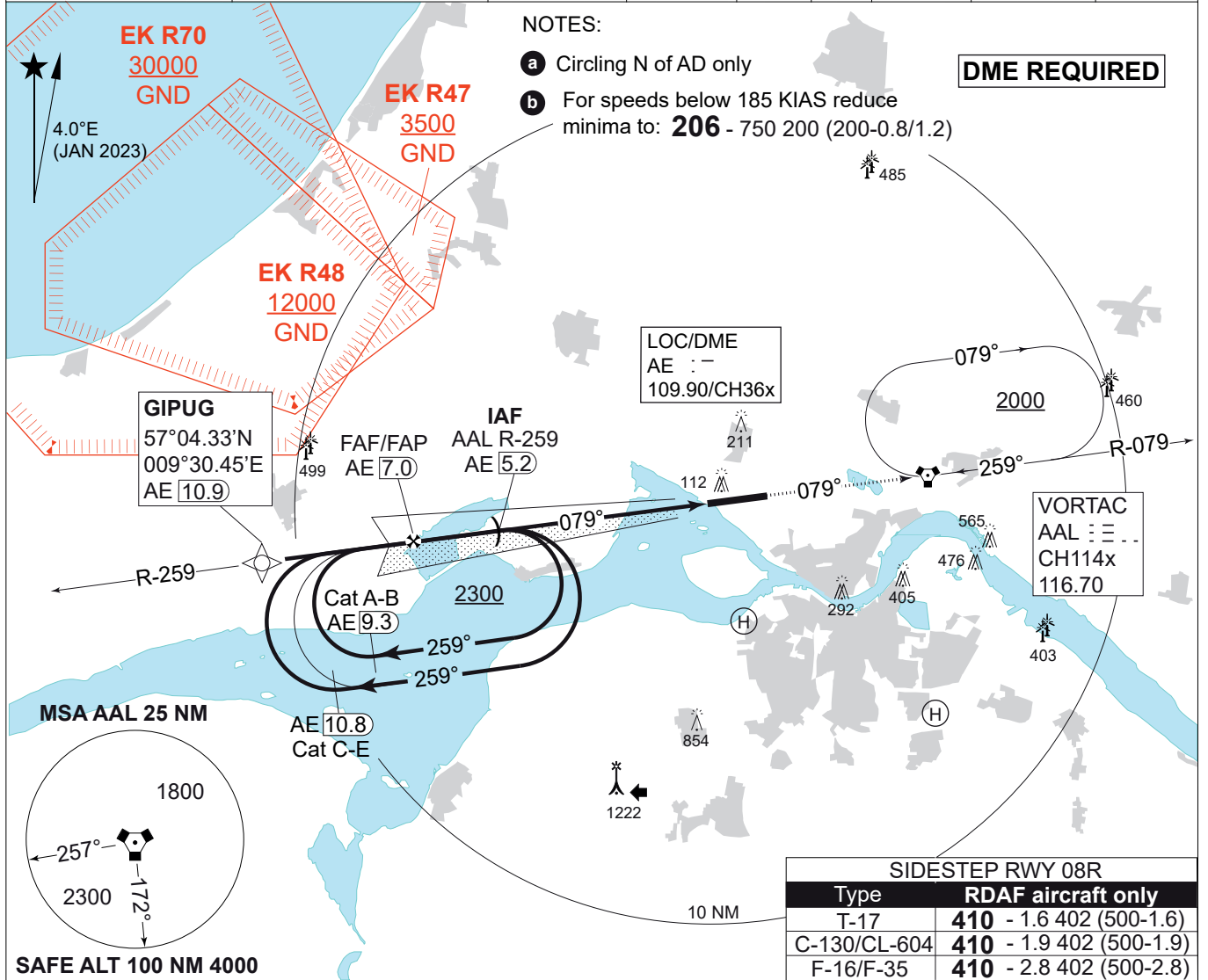


**MIPS**  
**INSTRUMENT APPROACH CHART**

AD ELEV 8

**ILS or LOC RWY 08L**  
**AALBORG (EKYT)**

COPENHAGEN CONTROL 242.650 124.555		AALBORG ATIS 120.480		AALBORG APPROACH 362.450 123.980		AALBORG TOWER 353.525 118.305		
LOC/DME AE 109.90/CH 36x	VORTAC AAL CH114x/116.700	APP COURSE 079°	FAF ALT 2300 FT	GS 3.00°	DA <b>206</b>	THR ELEV 6	ALS LENGTH 470 M	LDA 8694 FT



CATEGORY	A	B	C	D	E
S-ILS CAT I 08L	<b>206 - 750 200 (200-0.8/1.2)</b>				<b>281</b> -900 275 (300-0.9/1.3) <sup>b</sup>
S-LOC 08L	<b>300 - 900 292 (300-0.9/1.4)</b>				<b>310</b> -1000 302 (400-1.0/1.4)
CIRCLING <sup>a</sup>	<b>510</b> -1.5 502 (600-1.5)	<b>510</b> -1.6 502 (600-1.6)	<b>690</b> -2.4 682 (700-2.4)	<b>750</b> -3.6 742 (800-3.6)	<b>840</b> -3.6 832 (900-3.6)

**ILS or LOC RWY 08L** 57°05.57'N  
009°50.95'E **AALBORG (EKYT)**

CHANGES: NEW AALBORG HOSPITALSØBYEN HELIPAD) ADDED.

AIR COMMAND DENMARK - MIL-AIM 30 OCT 2025