

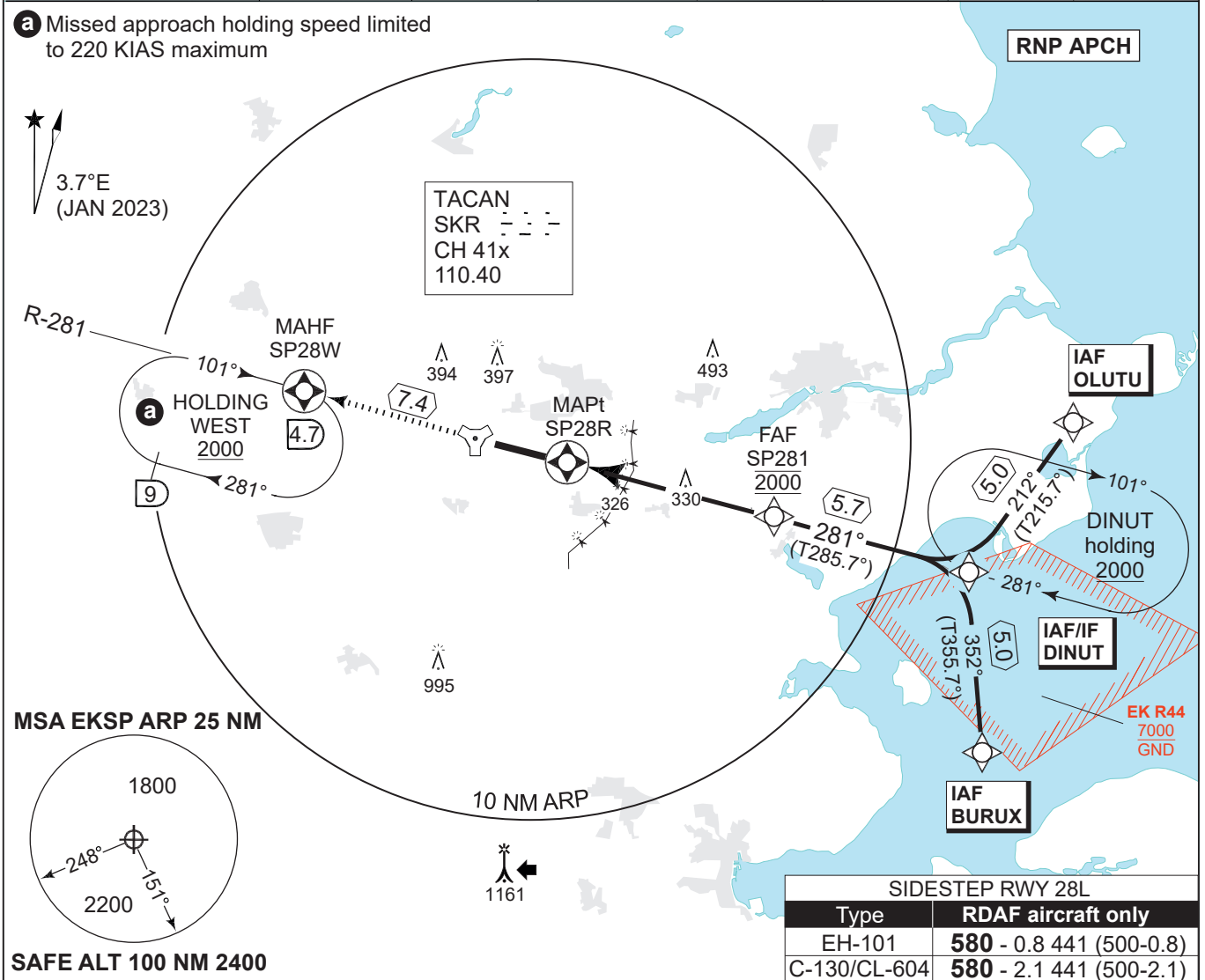
MIPS INSTRUMENT APPROACH CHART

RNP RWY 28R SKRYDSTRUP (EKSP)

AD ELEV 141

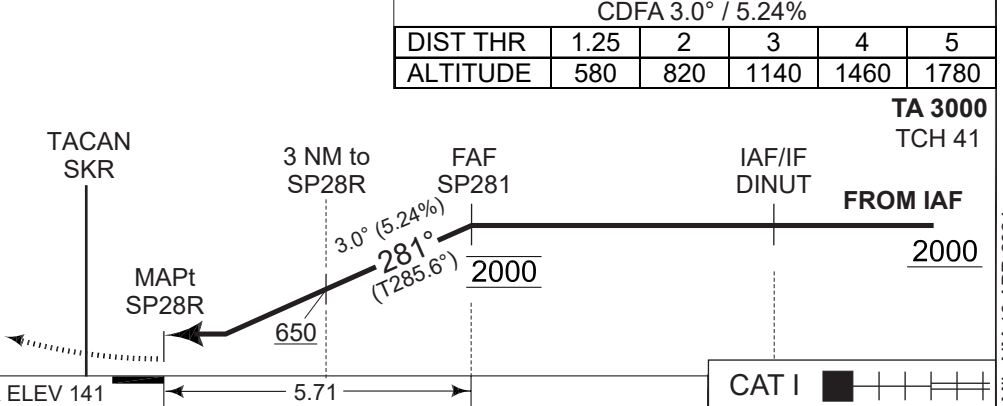
COPENHAGEN CONTROL 360.100 133.155		SKRYDSTRUP ATIS 133.905		SKRYDSTRUP APPROACH 315.100 124.105		SKRYDSTRUP TOWER 286.375 118.280	
TACAN SKR 110.40/CH 41x	APP COURSE 281°	FAF 2000 FT	Descent GR 3.0° (5.24%)	MDA 580	THR ELEV 141	ALS LENGTH 900 M	LDA 9863 FT

a Missed approach holding speed limited to 220 KIAS maximum



MISSED APPROACH RNP
Climb to 2000 ft on track 281° to SP28W and join Holding WEST.

Non-RNP: Climb to 2000 FT on SKR R-281 to 4.7 DME and join Holding WEST.



CDFA 3.0° / 5.24%					
DIST THR	1.25	2	3	4	5
ALTITUDE	580	820	1140	1460	1780

TA 3000
TCH 41

MIPS	CATEGORY	A	B	C	D	E
	LNAV (MDA)	580 - 1300 439 (500-1.3/1.5)		580 - 1300 439 (500-1.3/2.0)		
	CIRCLING	630 - 1.5 489 (500-1.5)	700 - 1.6 559 (600-1.6)	800 - 2.4 659 (700-2.4)	890 - 3.6 749 (800-3.6)	1490 - 3.6 1349 (1400-3.6)

RNP RWY 28R

55°13.53'N
009°15.84'E

SKRYDSTRUP (EKSP)

CHANGES: ATC VHF FREQ.

AIR COMMAND DENMARK - MIL AIM 18 APR 2024