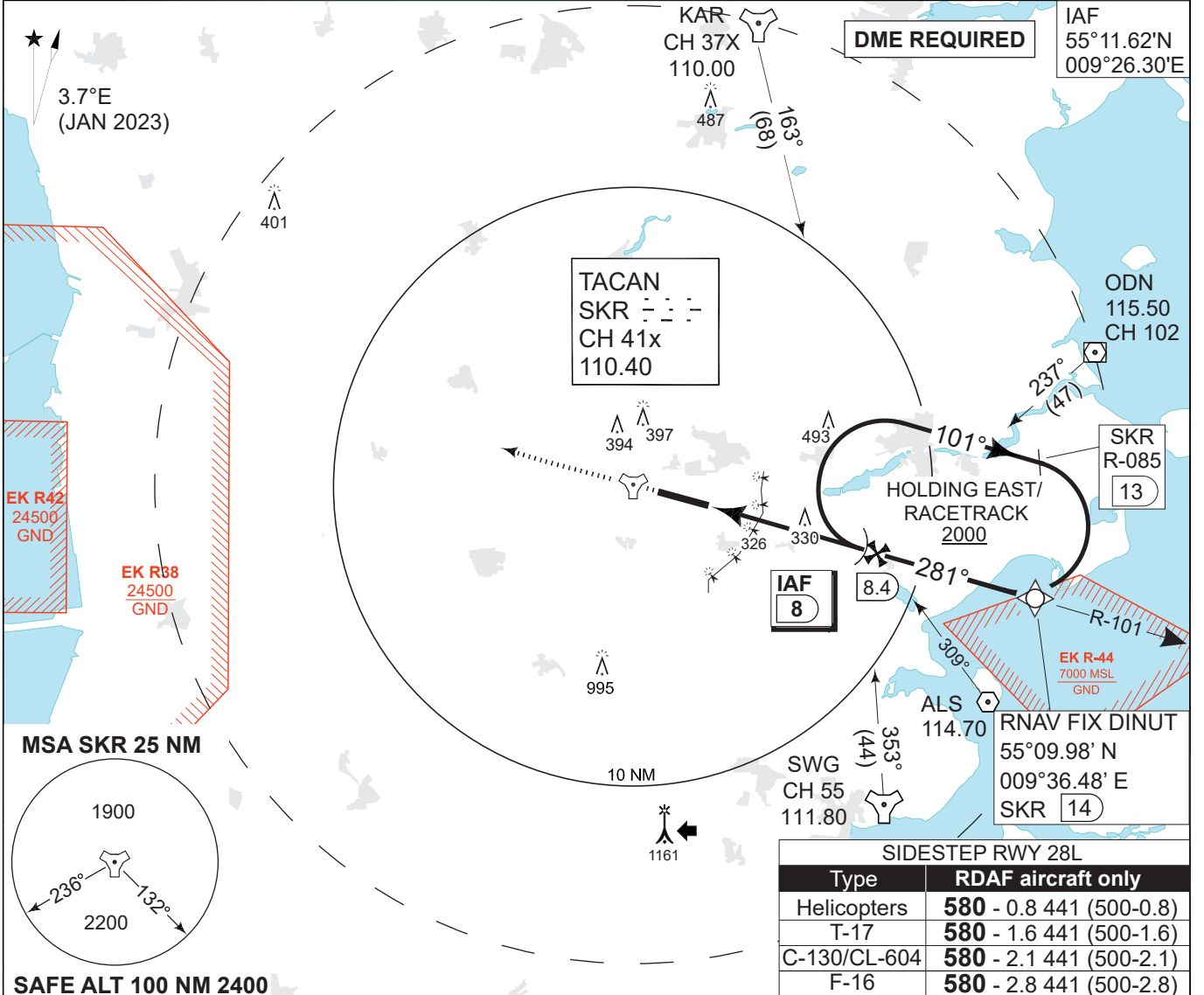


**MIPS INSTRUMENT APPROACH CHART**

**TACAN RWY 28R SKRYDSTRUP (EKSP)**

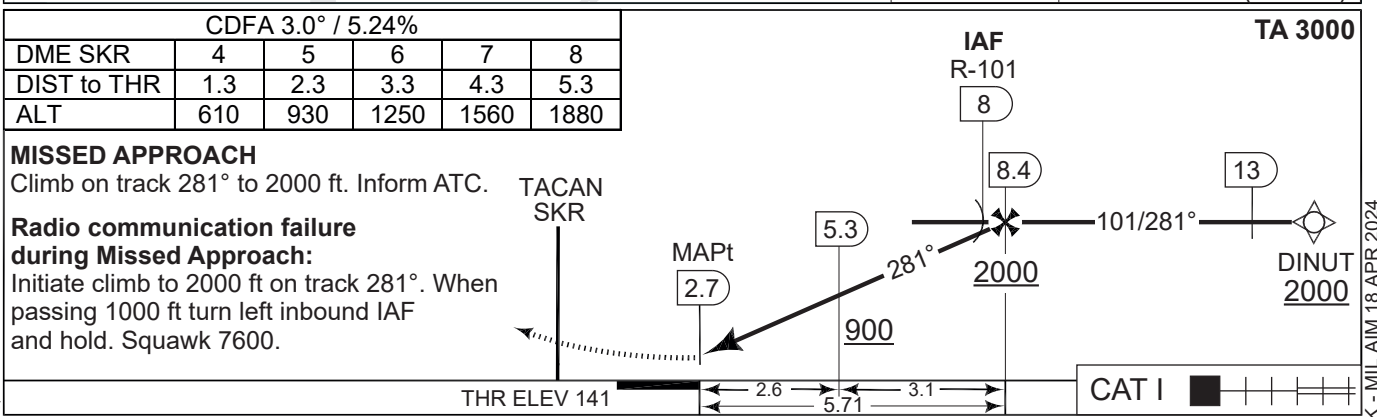
AD ELEV 141

COPENHAGEN CONTROL 360.100 133.155		SKRYDSTRUP ATIS 133.905		SKRYDSTRUP APPROACH 315.100 124.105		SKRYDSTRUP TOWER 286.375 118.280	
TACAN SKR 110.40/CH 41x	APP COURSE 281°	FAF ALT 2000 FT	DESCENT GR 319 FT/NM	MDA <b>580</b>	THR ELEV 141	ALS length 900 M	LDA 9863 FT



**SIDESTEP RWY 28L**

Type	RDAF aircraft only
Helicopters	<b>580</b> - 0.8 441 (500-0.8)
T-17	<b>580</b> - 1.6 441 (500-1.6)
C-130/CL-604	<b>580</b> - 2.1 441 (500-2.1)
F-16	<b>580</b> - 2.8 441 (500-2.8)



CATEGORY	A	B	C	D	E
S-TACAN 28R	<b>580</b> - 1300 439 (500-1.3/1.5)		<b>580</b> - 1300 439 (500-1.3/2.0)		
CIRCLING	<b>630</b> -1.5 489 (500-1.5)	<b>700</b> -1.6 559 (600-1.6)	<b>800</b> -2.4 659 (700-2.4)	<b>890</b> -3.6 749 (800-3.6)	<b>1490</b> -3.6 1349 (1400-3.6)

**TACAN RWY 28R** 55°13.53'N 009°15.84'E **SKRYDSTRUP (EKSP)**

CHANGES: ATC VHF FREQ. MIPS

AIR COMMAND DENMARK - MIL AIM 18 APR 2024