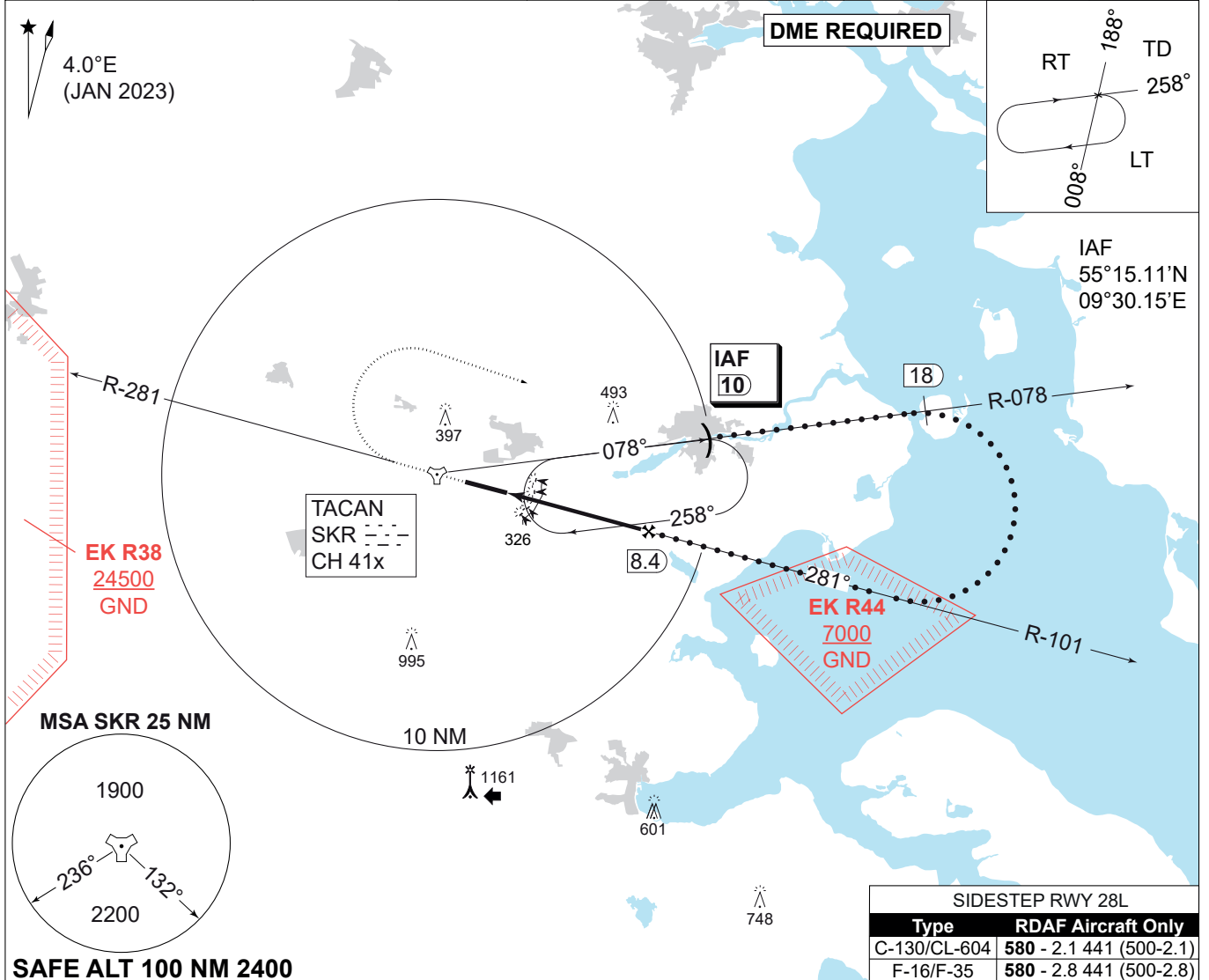


MIPS
INSTRUMENT APPROACH CHART

HPMA TACAN RWY 28R
SKRYDSTRUP (EKSP)

AD ELEV 141

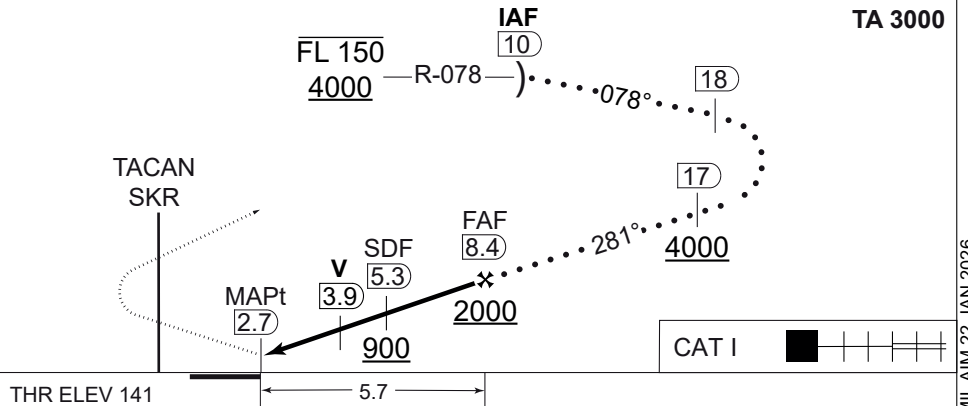
COPENHAGEN CONTROL 360.100 133.155		SKRYDSTRUP ATIS 133.905		SKRYDSTRUP APPROACH 280.750 124.105		SKRYDSTRUP TOWER 286.375 118.280	
TACAN SKR CH 41x	APP COURSE 281°	FAF ALT 2000 FT	DESCENT GR. 5.24% (318 FT/NM)	MDA 580	THR ELEV 141	ALS LENGTH 900 M	LDA 9863 FT



SAFE ALT 100 NM 2400

CDFA: 3.00° / 5.24%					
DME SKR	4	5	6	7	8
DIST THR	1.3	2.3	3.3	4.3	5.3
ALT	610	930	1250	1570	1890

MISSED APPROACH
Climb on track 281° to 4000 ft. When passing 2000 ft turn right inbound IAF (SKR R-078 DME 10)



CHANGES: MAG VAR CORRECTED.

CATEGORY	HPMA
S-TACAN 28R	580 - 1300 439 (500-1.3/2.0)
CIRCLING	700 - 3.2 559 (600-3.2)

HPMA TACAN RWY 28R

55°13.53'N
009°15.84'E

SKRYDSTRUP (EKSP)

AIR COMMAND DENMARK - MIL AIM 22 JAN 2026