

MIPS INSTRUMENT APPROACH CHART

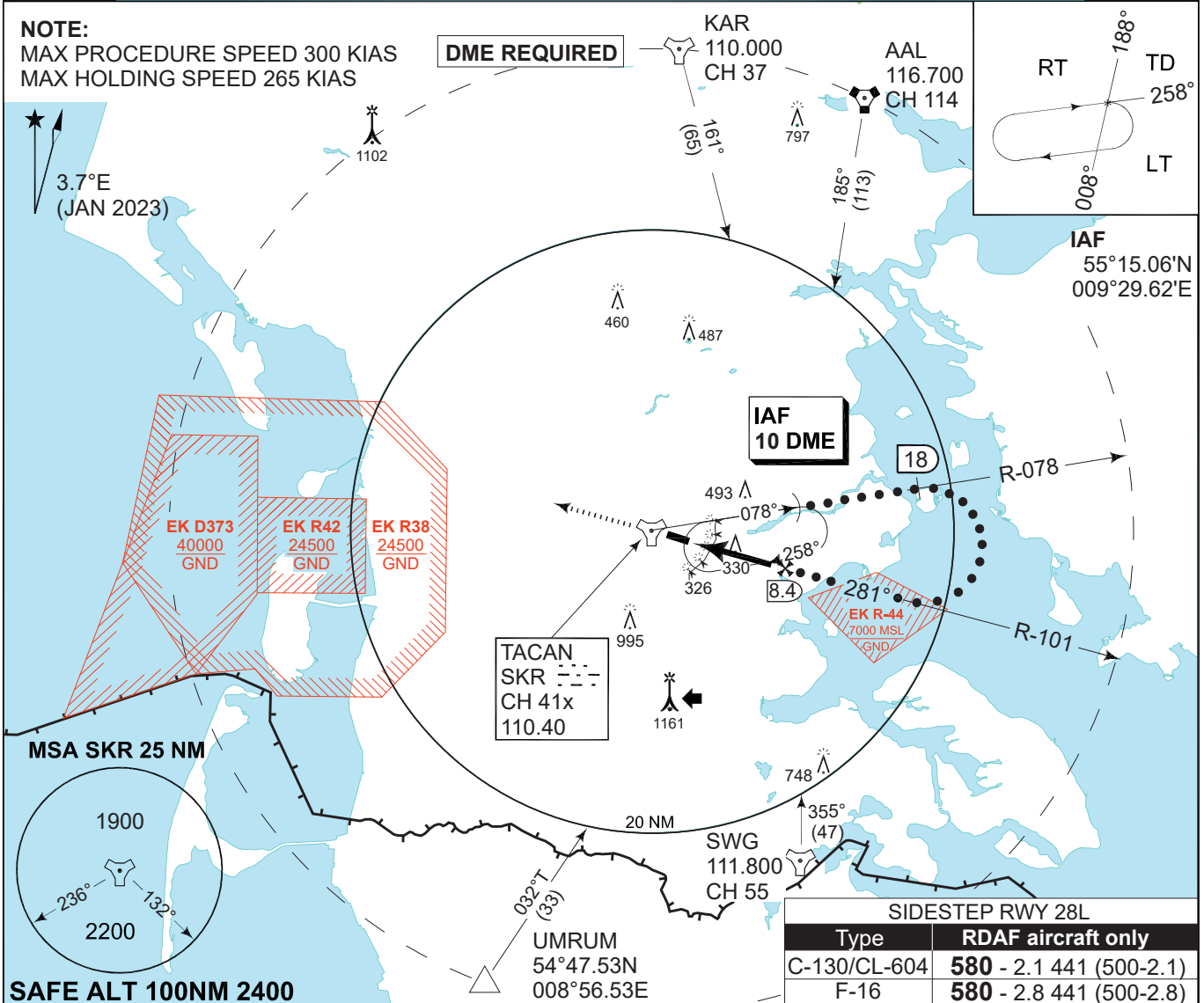
HI-TACAN RWY 28R SKRYDSTRUP (EKSP)

AD ELEV 141

| | | | | | | | |
|---------------------------------------|--------------------|----------------------------|-------------------------|--|-----------------|-------------------------------------|----------------|
| COPENHAGEN CONTROL 360.100 133.155 | | SKRYDSTRUP ATIS 133.905 | | SKRYDSTRUP APPROACH 315.100 124.105 | | SKRYDSTRUP TOWER 286.375 118.280 | |
| TACAN SKR 110.40/CH 41x | APP COURSE 281° | FAF ALT 2000 FT | DESCENT GR 319 FT/NM | MDA 580 | THR ELEV 141 | ALS length 900 M | LDA 9863 FT |

NOTE:
MAX PROCEDURE SPEED 300 KIAS
MAX HOLDING SPEED 265 KIAS

DME REQUIRED



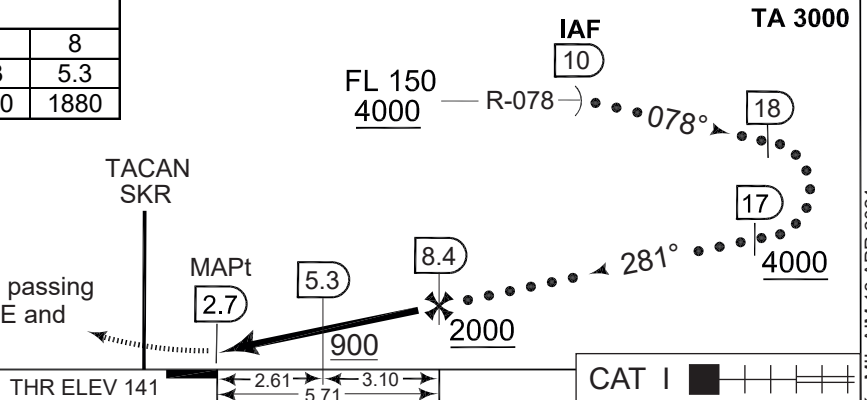
| | | | | | |
|-------------------|-----|-----|------|------|------|
| CDFA 3.0° / 5.24% | | | | | |
| DME SKR | 4 | 5 | 6 | 7 | 8 |
| DIST to THR | 1.3 | 2.3 | 3.3 | 4.3 | 5.3 |
| ALT | 610 | 930 | 1250 | 1560 | 1880 |

MISSED APPROACH

Climb on track 281° to 2000 ft. Inform ATC.

Radio communication failure during Missed Approach:

Initiate climb to 2000 ft on track 281°. When passing 1000 ft turn left inbound SKR R-101/8.4 DME and hold. Squawk 7600.



CHANGES: ATC VHF FREQ. MIPS

| | | | |
|-------------|-------------------------------------|--------------------------------|-----------------------------------|
| CATEGORY | C | D | E |
| S-TACAN 28R | 580 - 1300 439 (500-1.3/2.0) | | |
| CIRCLING | 800 - 2.4 659 (700-2.4) | 890 - 3.6 749 (800-3.6) | 1490 - 3.6 1349 (1400-3.6) |

HI-TACAN RWY 28R

55°13.53'N
009°15.84'E

SKRYDSTRUP (EKSP)

AIR COMMAND DENMARK - MIL AIM 18 APR 2024