

MIPS INSTRUMENT APPROACH CHART

ILS or LOC Z RWY 28R SKRYDSTRUP (EKSP)

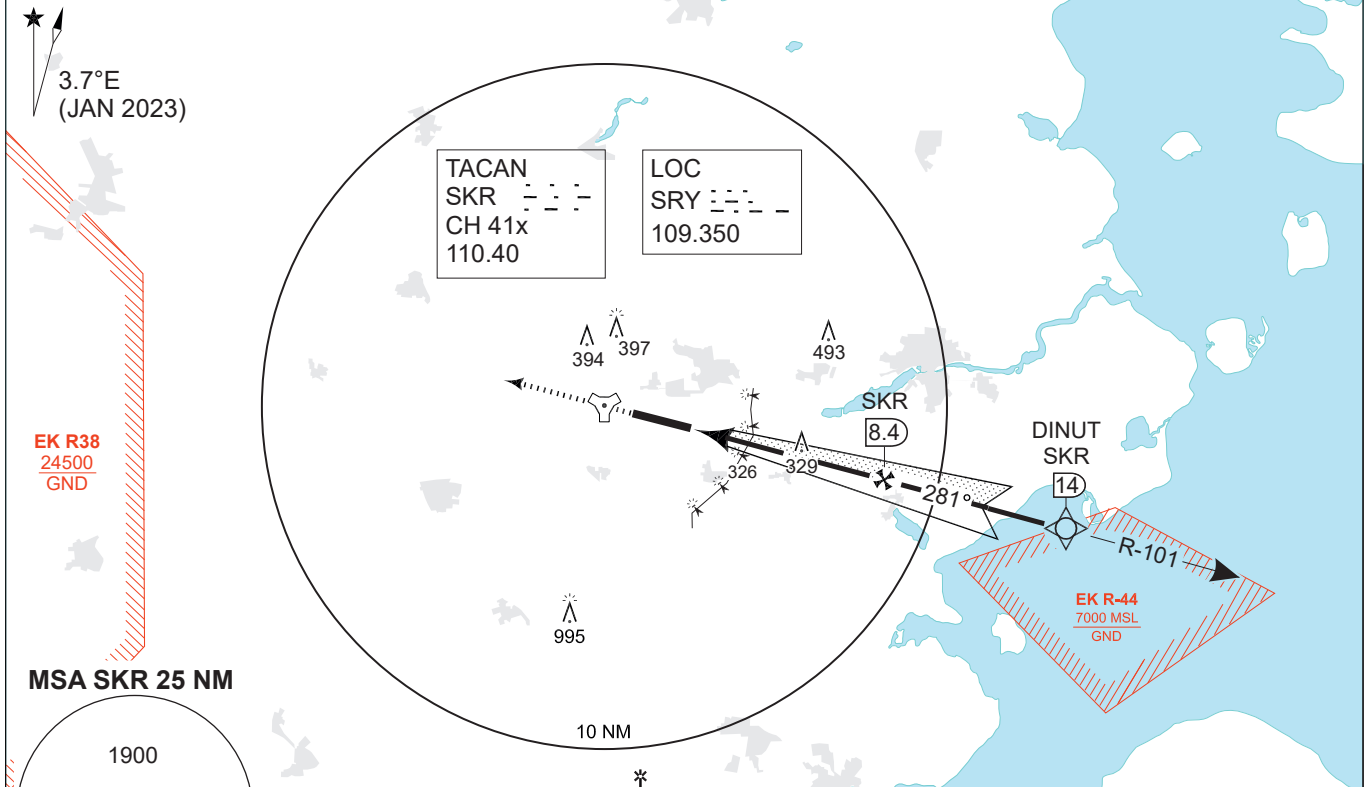
AD ELEV 141

COPENHAGEN CONTROL 360.100 133.155		SKRYDSTRUP ATIS 133.905	SKRYDSTRUP APPROACH 315.100 124.105			SKRYDSTRUP TOWER 286.375 118.280		
TACAN SKR 110.40/CH 41x	LOC SRY 109.35	APP COURSE 281°	GS INTCP ALT 2000 FT	GS 3.0°	DA 341	THR 141	ALS length 900 M	LDA 9863 FT

CAUTION:
THE DME INDICATIONS ARE FROM TACAN SKR
- NOT FROM THE DME ASSOCIATED WITH THE ILS
NOTE: RADAR VECTORS TO FINAL REQUIRED

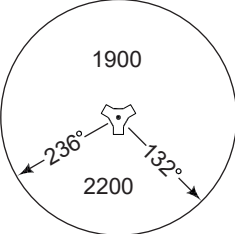
DME REQUIRED

DINUT
55° 09.98'N
009° 36.48'E



EK R38
24500
GND

MSA SKR 25 NM



SAFE ALT 100 NM 2400

SIDESTEP RWY 28L	
Type	RDAF aircraft only
Helicopters	540 - 0.8 401 (500-0.8)
T-17	540 - 1.6 401 (500-1.6)
C-130/CL-604	540 - 1.9 401 (500-1.9)
F-16	540 - 2.8 401 (500-2.8)

LOC ONLY (CDFA 3.0° / 5.24%)					
DIST TO THR (NM)	1	2	3	4	5
DME SKR (NM)	3.7	4.7	5.7	6.7	7.7
ALT	500	820	1140	1460	1780

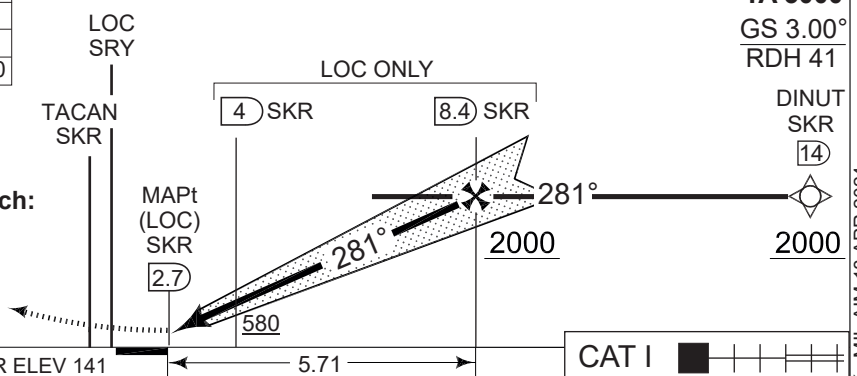
TA 3000
GS 3.00°
RDH 41

MISSED APPROACH

Climb on track 281° to 2000 ft. Inform ATC.

Radio com. failure during Missed Approach:

Initiate climb to 2000 ft on track 281°. When passing 1000 ft turn left inbound SKR R-101/8.4 DME and hold. Squawk 7600.



CHANGES: ATC VHF FREQ. MIPS

CATEGORY	A	B	C	D	E
S-ILS/DME 28R	341 -550 200 (200-0.8/1.2)				
S-LOC/DME 28R	470 -800 329 (400-0.8/1.5)				
CIRCLING	630 -1.5 489 (500-1.5)	700 -1.6 559 (600-1.6)	800 -2.4 659 (700-2.4)	890 -3.6 749 (800-3.6)	1490 -3.6 1349 (1400-3.6)

ILS or LOC Z RWY 28R

55°13.53'N
009°15.84'E

SKRYDSTRUP (EKSP)

AIR COMMAND DENMARK - MIL AIM 18 APR 2024