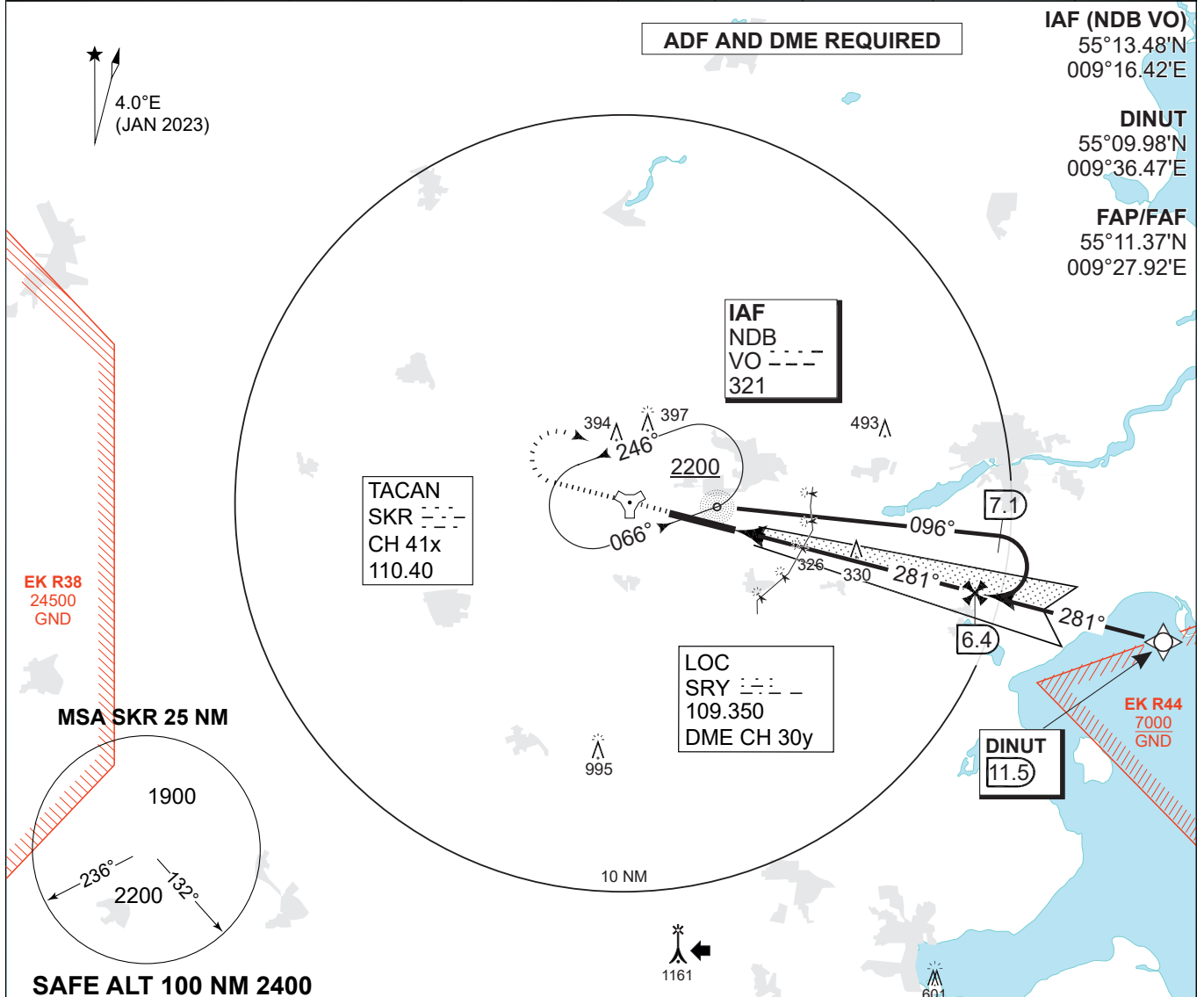


MIPS INSTRUMENT APPROACH CHART

COPTER ILS or LOC RWY 28R SKRYDSTRUP (EKSP)

AD ELEV 141

COPENHAGEN CONTROL 360.100 133.155		SKRYDSTRUP ATIS 133.905	SKRYDSTRUP APPROACH 280.750 124.105			SKRYDSTRUP TOWER 286.375 118.280	
LOC / DME SRY 109.35/CH 30y	APP COURSE 281°	GS INTCP ALT 2200 FT	GS 3.0°	DA 341	THR ELEV 141	ALS LENGTH 900 M	LDA 9863 FT



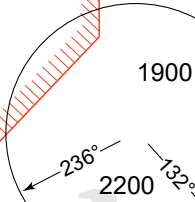
IAF (NDB VO)
55°13.48'N
009°16.42'E

DINUT
55°09.98'N
009°36.47'E

FAP/FAF
55°11.37'N
009°27.92'E

EK R38
24500
GND

MSA SKR 25 NM



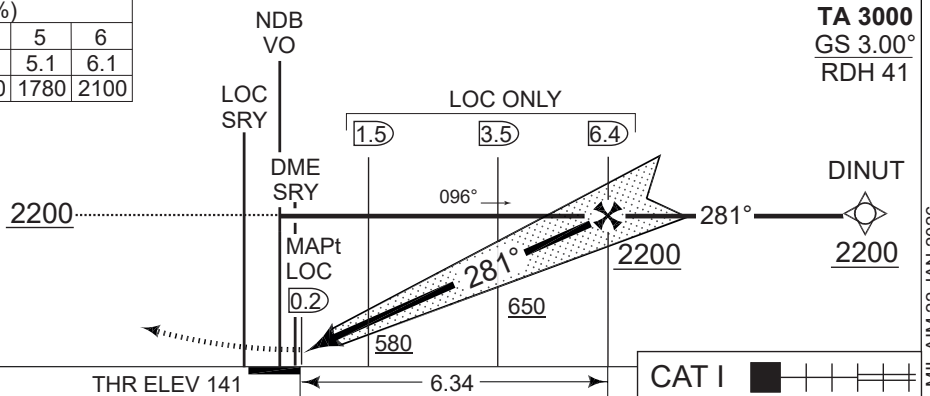
SAFE ALT 100 NM 2400

LOC ONLY (CDFA 3.0° / 5.24%)						
DIST TO THR (NM)	1	2	3	4	5	6
DME SRY (NM)	1.1	2.1	3.1	4.1	5.1	6.1
ALT	500	820	1140	1460	1780	2100

TA 3000
GS 3.00°
RDH 41

MISSED APPROACH

Climb on RWY HDG to 2200 FT. Turn right to join holding at NDB VO.



CATEGORY	H	THR ELEV	ALS	DA	GS
H-ILS/DME 28R	341	-400	200	(200-0.4/0.8)	
H-LOC/DME 28R	470	-400	329	(400-0.4/0.8)	

CHANGES: MAG VAR CORRECTED.

COPTER ILS or LOC RWY 28R

55°13.53'N
009°15.84'E

SKRYDSTRUP (EKSP)

AIR COMMAND DENMARK - MIL AIM 22 JAN 2026