

# MIPS INSTRUMENT APPROACH CHART

AD ELEV 141

# ILS or LOC RWY 28R SKRYDSTRUP (EKSP)

COPENHAGEN CONTROL 360.100 133.155		SKRYDSTRUP ATIS 133.905		SKRYDSTRUP APPROACH 280.750 124.105			SKRYDSTRUP TOWER 286.375 118.280	
LOC / DME SRY 109.35/CH 30y	APP COURSE 281°	GS INTCP ALT 2200 FT	GS 3.0°	DA 341	THR ELEV 141	ALS LENGTH 900 M	LDA 9863 FT	

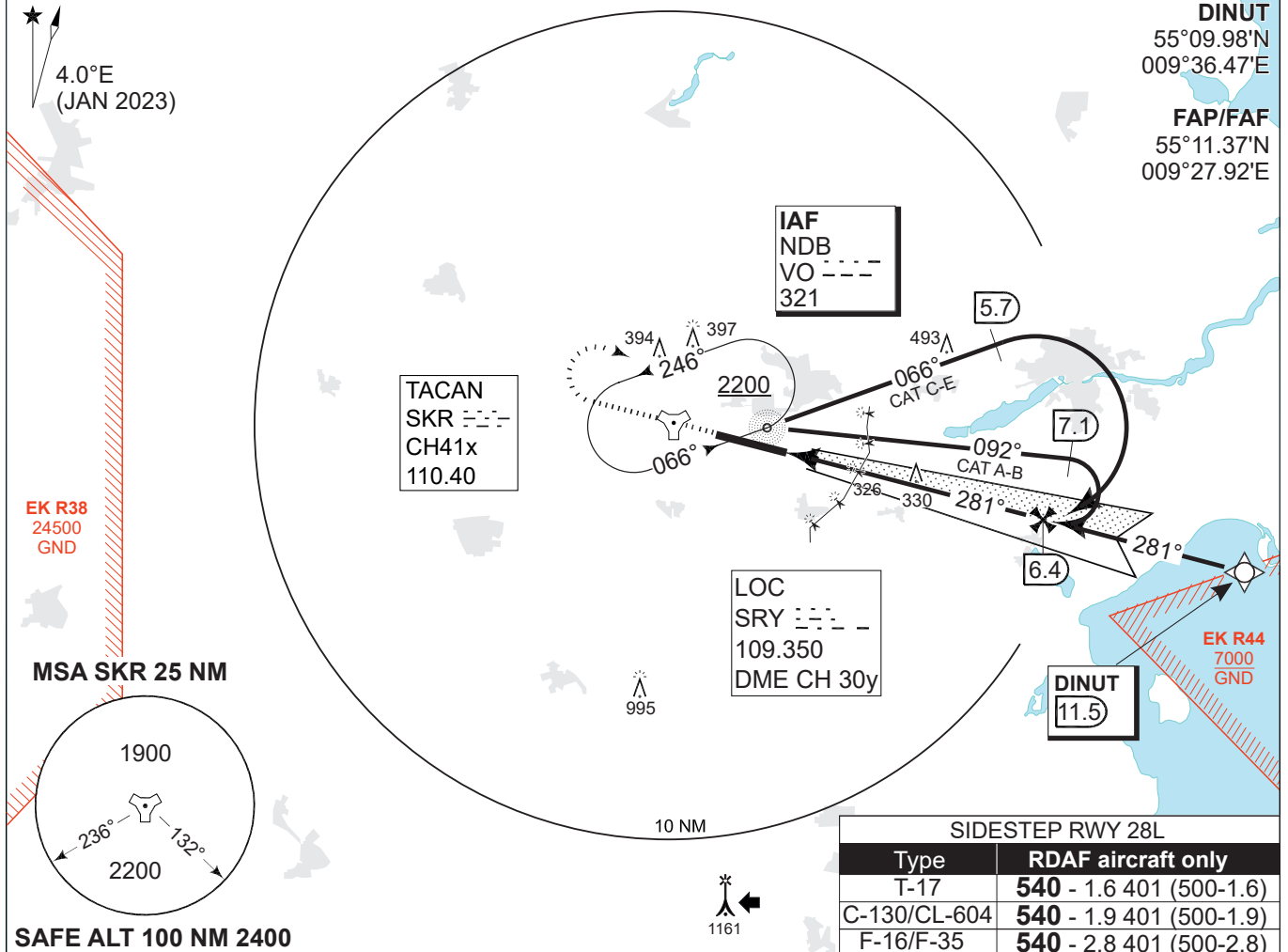
**NOTE:**  
SPEED RESTRICTION ACFT CAT C-E:  
Base turn limited to 240 KIAS maximum

**ADF AND DME REQUIRED**

**IAF (NDB VO)**  
55°13.48'N  
009°16.42'E

**DINUT**  
55°09.98'N  
009°36.47'E

**FAP/FAF**  
55°11.37'N  
009°27.92'E

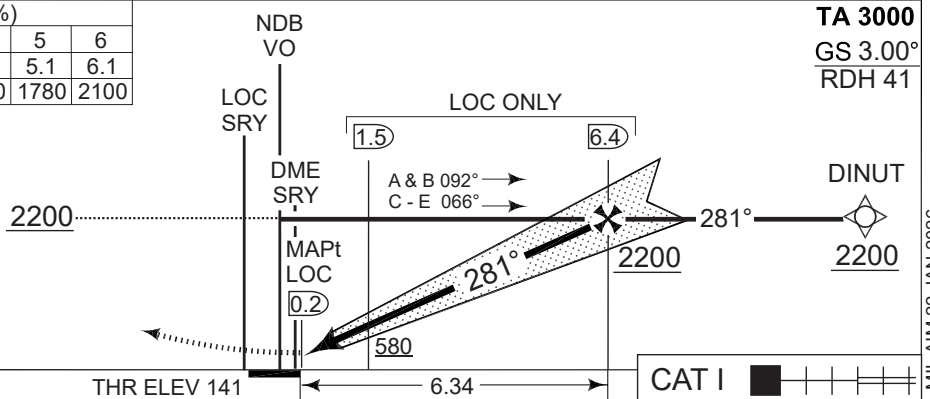


SIDESTEP RWY 28L	
Type	RDAF aircraft only
T-17	540 - 1.6 401 (500-1.6)
C-130/CL-604	540 - 1.9 401 (500-1.9)
F-16/F-35	540 - 2.8 401 (500-2.8)

LOC ONLY (CDFA 3.0° / 5.24%)						
DIST TO THR (NM)	1	2	3	4	5	6
DME SRY (NM)	1.1	2.1	3.1	4.1	5.1	6.1
ALT	500	820	1140	1460	1780	2100

### MISSED APPROACH

Climb on RWY HDG to 2200 FT. Turn right to join holding at NDB VO.



**TA 3000**  
GS 3.00°  
RDH 41

CATEGORY	A	B	C	D	E
S-ILS/DME 28R	<b>341</b> -550 200 (200-0.8/1.2)				
S-LOC/DME 28R	<b>470</b> -800 329 (400-0.8/1.5)				
CIRCLING	<b>630</b> -1.5 489 (500-1.5)	<b>700</b> -1.6 559 (600-1.6)	<b>800</b> -2.4 659 (700-2.4)	<b>900</b> -3.6 759 (800-3.6)	<b>1490</b> -3.6 1349 (1400-3.6)

## ILS or LOC RWY 28R

55°13.53'N  
009°15.84'E  
13-9

## SKRYDSTRUP (EKSP)

CHANGES: MAG VAR CORRECTED. CAT D CIRCLING MINIMA RAISED.

AIR COMMAND DENMARK - MIL AIM 22 JAN 2026