

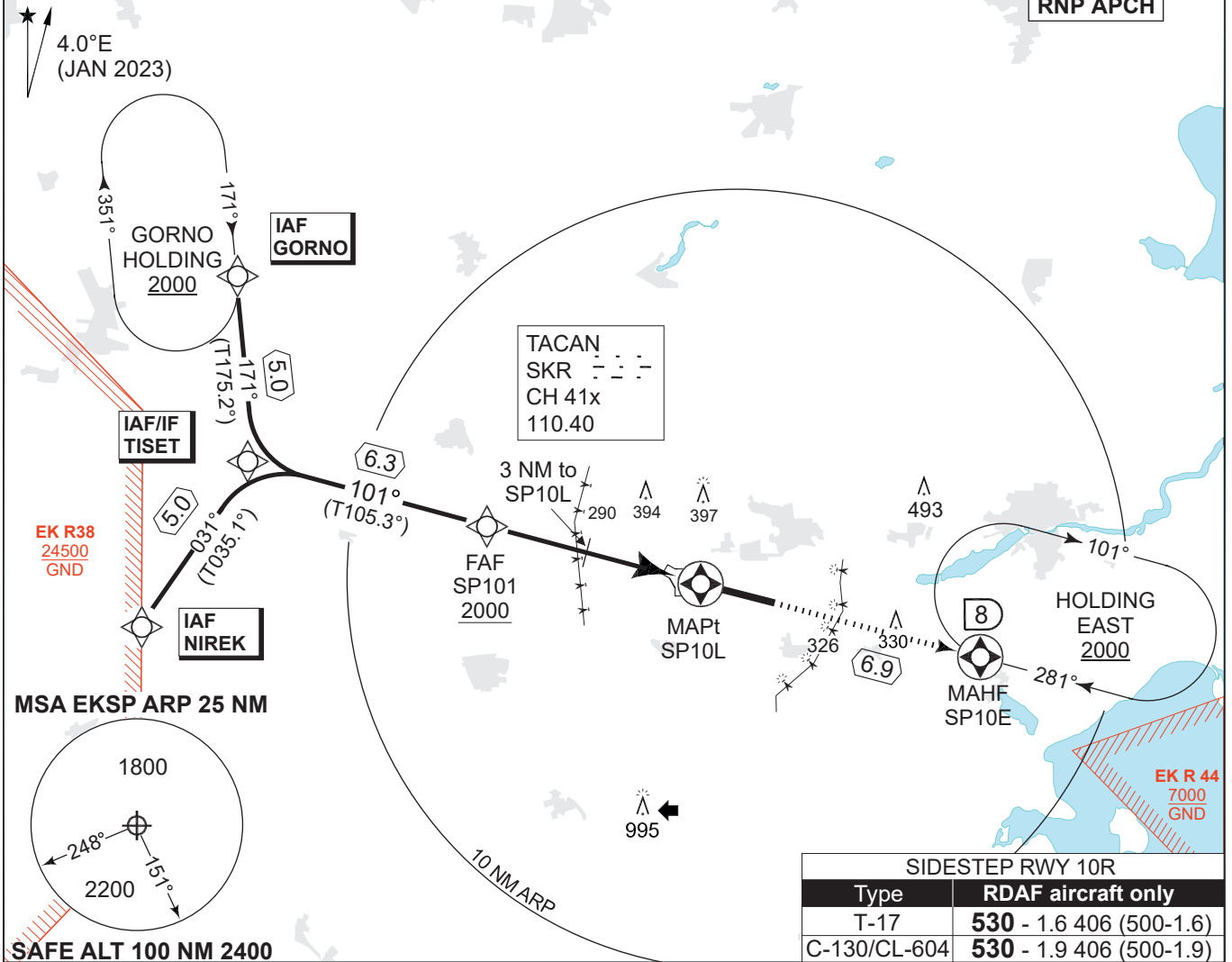
**MIPS INSTRUMENT APPROACH CHART**

AD ELEV 141

**RNP RWY 10L SKRYDSTRUP (EKSP)**

COPENHAGEN CONTROL 360.100 133.155		SKRYDSTRUP ATIS 133.905	SKRYDSTRUP APPROACH 280.750 124.105		SKRYDSTRUP TOWER 286.375 118.280		
TACAN SKR 110.40/CH 41x	APP COURSE 101°	FAF 2000 FT	Descent GR 3.0° (5.24%)	MINIMA <b>See CAT</b>	THR ELEV 126	ALS LENGTH 900 M	LDA 9863 FT

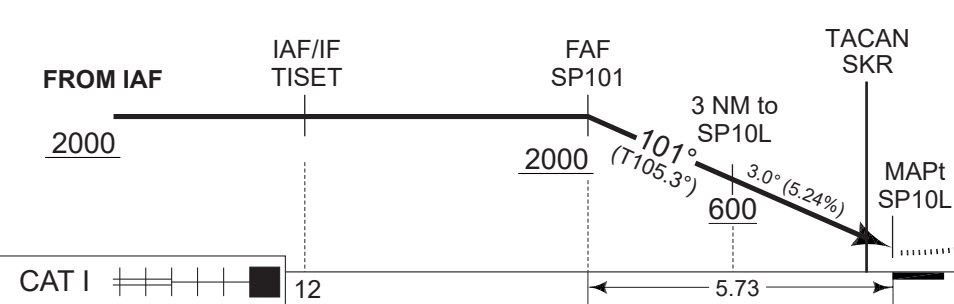
CAUTION: IAF NIREK not available when EK R38 is active



SIDESTEP RWY 10R	
Type	RDAF aircraft only
T-17	530 - 1.6 406 (500-1.6)
C-130/CL-604	530 - 1.9 406 (500-1.9)

CDFA 3.0° / 5.24%					
DIST THR	5	4	3	2	1
ALTITUDE	1770	1450	1130	820	500

TA 3000  
TCH 50



**MISSED APPROACH RNP**  
Climb to 2000 ft on track 101° to SP10E and join Holding East.  
**Non-RNP:** Climb to 2000 FT on SKR R-101 to 8 DME and join Holding East.

CHANGES: MAG VAR CORRECTED.

CATEGORY	A	B	C	D	E
<b>MIPS</b> LNAV (MDA)	<b>440</b> - 750 314 (400-0.8/1.4)		<b>450</b> - 800 324 (400-0.8/1.5)		
CIRCLING	<b>630</b> - 1.5 489 (500-1.5)	<b>700</b> - 1.6 559 (600-1.6)	<b>800</b> - 2.4 659 (700-2.4)	<b>890</b> - 3.6 749 (800-3.6)	<b>1490</b> - 3.6 1349 (1400-3.6)

**RNP RWY 10L**

55°13.53'N  
009°15.84'E

**SKRYDSTRUP (EKSP)**

AIR COMMAND DENMARK - MIL AIM 22 JAN 2026