

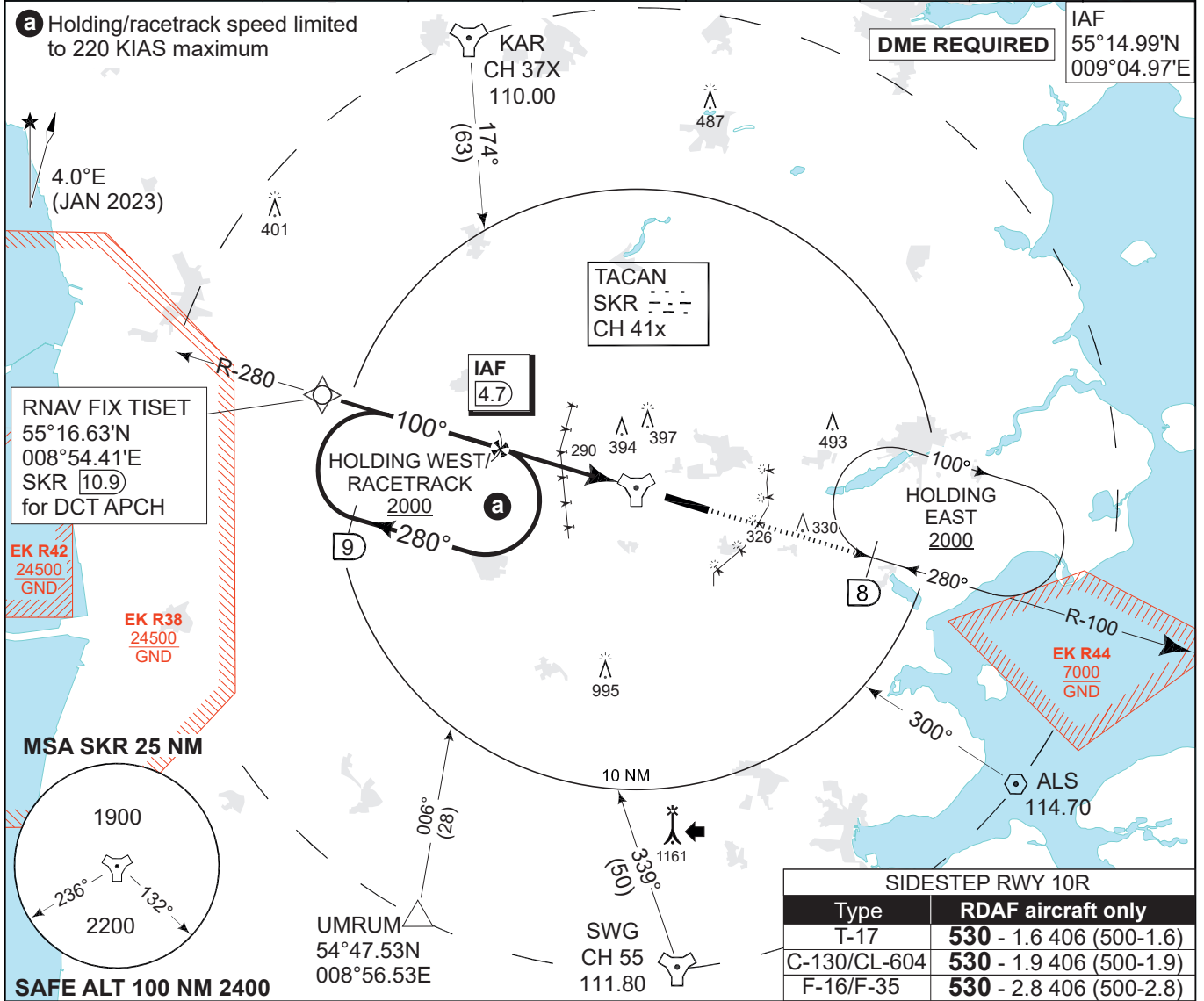
MIPS INSTRUMENT APPROACH CHART

TACAN RWY 10L SKRYDSTRUP (EKSP)

AD ELEV 141

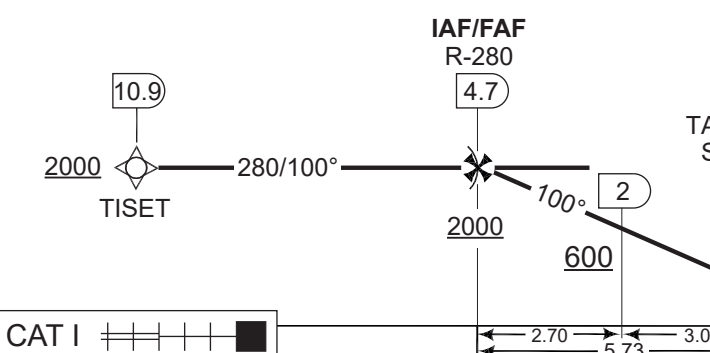
COPENHAGEN CONTROL 360.100 133.155		SKRYDSTRUP ATIS 133.905		SKRYDSTRUP APPROACH 280.750 124.105		SKRYDSTRUP TOWER 286.375 118.280	
TACAN SKR CH 41x	APP COURSE 100°	FAF ALT 2000 FT	DESCENT GR 319 FT/NM	MDA See minima	THR ELEV 126	ALS length 900 M	LDA 9863 FT

a Holding/racetrack speed limited to 220 KIAS maximum



SIDESTEP RWY 10R	
Type	RDAF aircraft only
T-17	530 - 1.6 406 (500-1.6)
C-130/CL-604	530 - 1.9 406 (500-1.9)
F-16/F-35	530 - 2.8 406 (500-2.8)

TA 3000



CDFA 3.0° / 5.24%					
DME SKR	4	3	2	1	0
DIST to THR	5.1	4.1	3.1	2.1	1.1
ALT	1790	1470	1150	830	520

MISSED APPROACH
Initiate climb to 2000 FT.
Follow SKR R-100 outbound.
At SKR 8 DME join holding EAST.

CATEGORY	A	B	C	D	E
----------	---	---	---	---	---

MIPS	S-TACAN 10L	430 -750 304 (400-0.8/1.4)				
	CIRCLING	630 -1.5 489 (500-1.5)	700 -1.6 559 (600-1.6)	800 -2.4 659 (700-2.4)	890 -3.6 749 (800-3.6)	1490 -3.6 1349 (1400-3.6)

TACAN RWY 10L 55°13.53'N 009°15.84'E **SKRYDSTRUP (EKSP)**

CHANGES: MAG VAR CORRECTED. MULTIPLE COURSES CORRECTED.

AIR COMMAND DENMARK - MIL AIM 22 JAN 2026