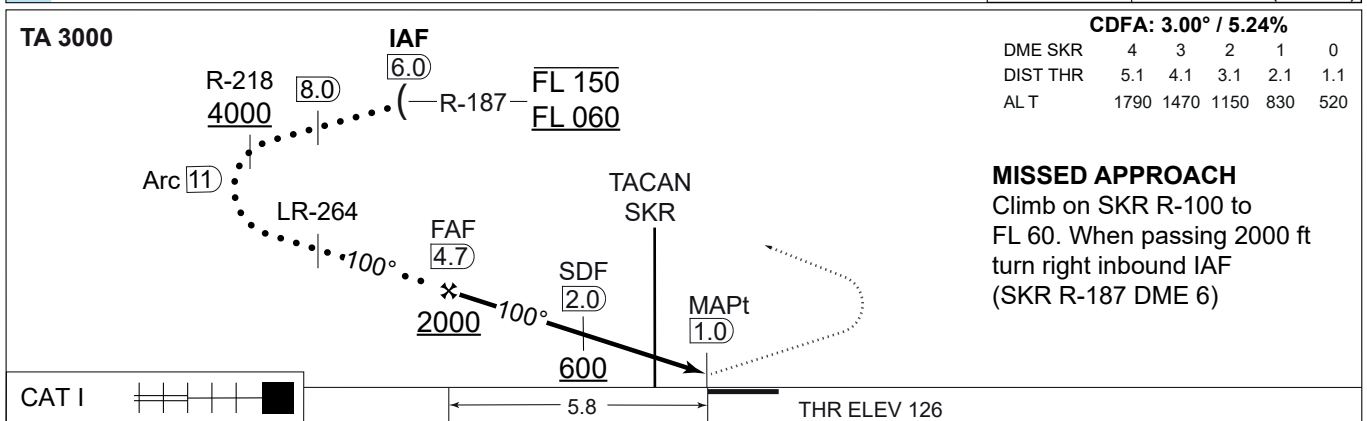
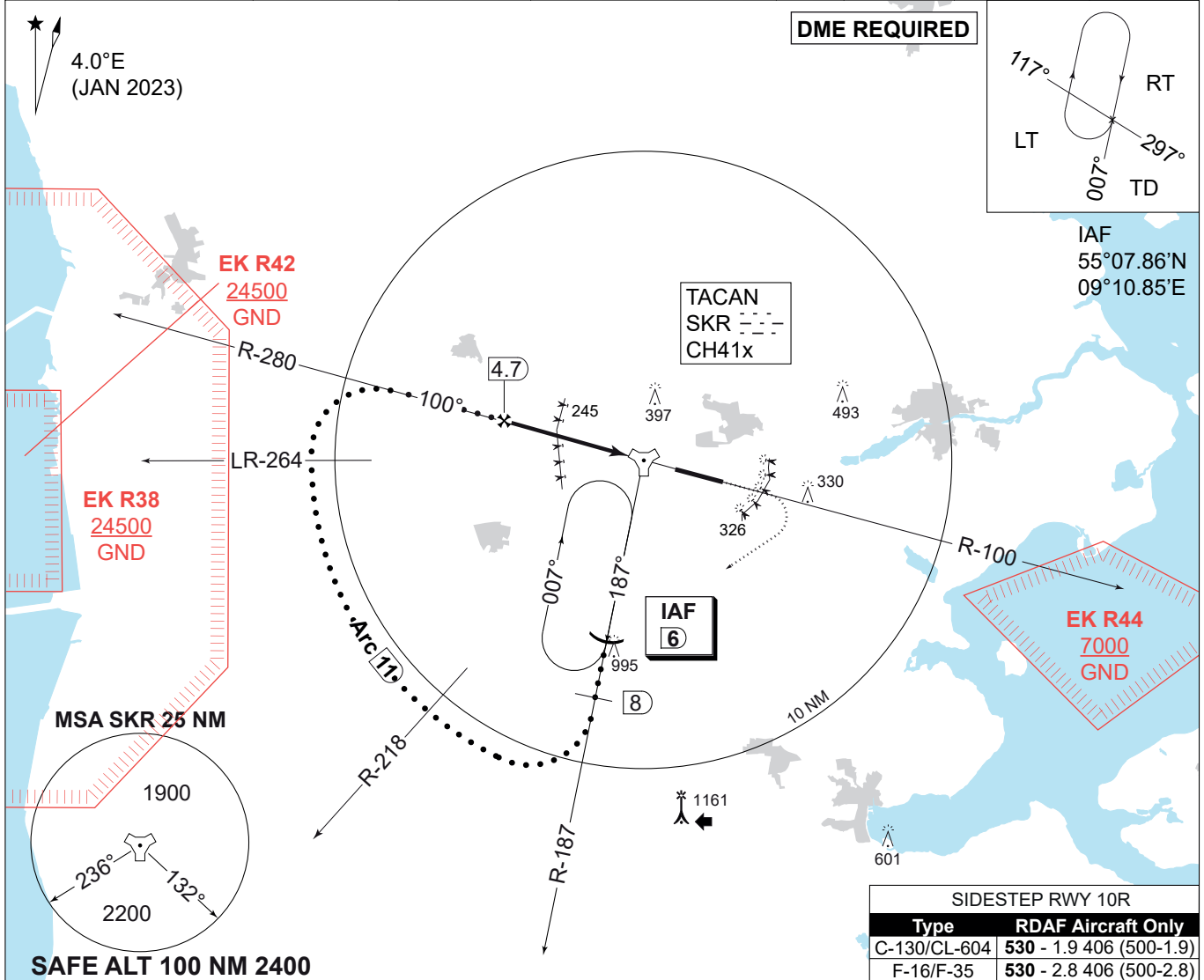


**MIPS**  
**INSTRUMENT APPROACH CHART**

**HPMA TACAN RWY 10L**  
**SKRYDSTRUP (EKSP)**

AD ELEV 141

COPENHAGEN CONTROL 360.100 133.155		SKRYDSTRUP ATIS 133.905		SKRYDSTRUP APPROACH 280.750 124.105		SKRYDSTRUP TOWER 286.375 118.280	
TACAN SKR CH 41x	APP COURSE 100°	FAF ALT 2000 FT	DESCENT GR. 5.24% (318 FT/NM)	MDA <b>460</b>	THR ELEV 126	ALS LENGTH 900 M	LDA 9863 FT



CHANGES: MAG VAR CORRECTED. MULTIPLE COURSES CORRECTED.

CATEGORY	HPMA
<b>MIPS</b> S-TACAN 10L	<b>460</b> - 800 334 (400-0.8/1.5)
CIRCLING	<b>700</b> - 3.2 559 (600-3.2)

**HPMA TACAN RWY 10L** 55°13.53'N  
009°15.84'E **SKRYDSTRUP (EKSP)**

AIR COMMAND DENMARK - MIL AIM 22 JAN 2026