

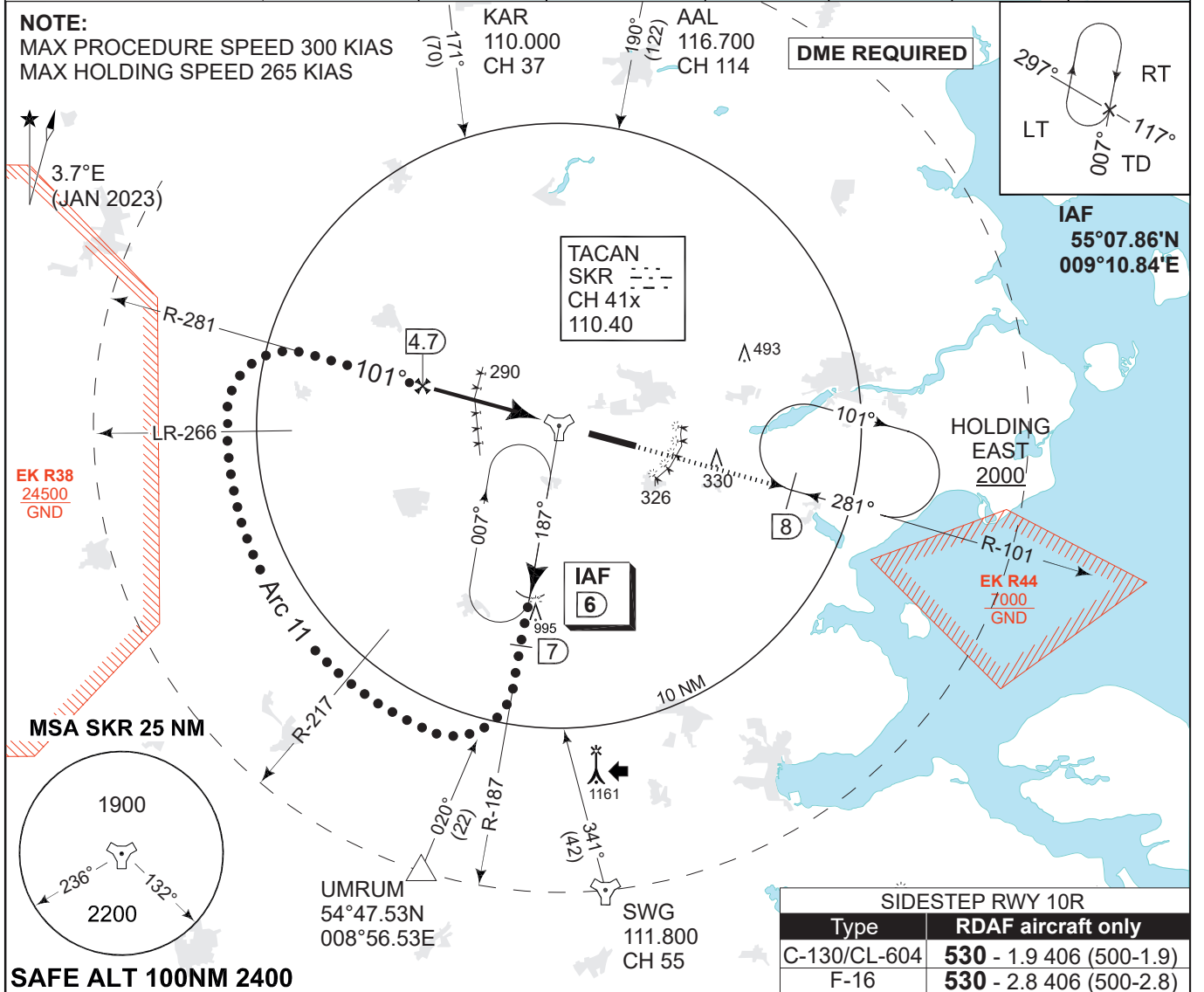
**MIPS INSTRUMENT APPROACH CHART**

**HI-TACAN RWY 10L SKRYDSTRUP (EKSP)**

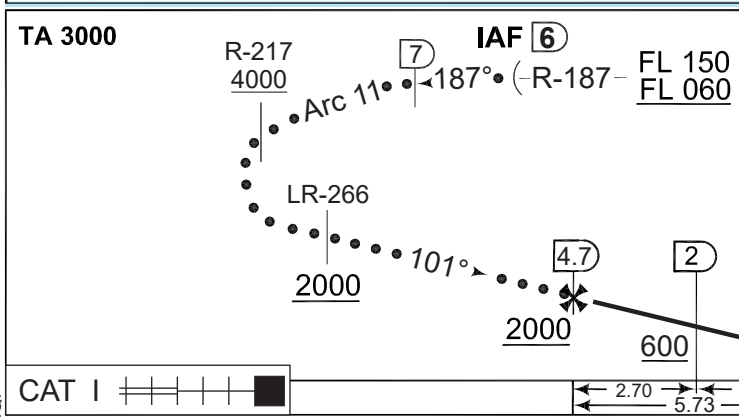
AD ELEV 141

COPENHAGEN CONTROL 360.100 133.155		SKRYDSTRUP ATIS 133.905		SKRYDSTRUP APPROACH 315.100 124.105		SKRYDSTRUP TOWER 286.375 118.280	
TACAN SKR 110.40/CH 41x	APP COURSE 101°	FAF ALT 2000 FT	DESCENT GR 319 FT/NM	MDA <b>430</b>	THR ELEV 126	ALS length 900 M	LDA 9863 FT

**NOTE:**  
MAX PROCEDURE SPEED 300 KIAS  
MAX HOLDING SPEED 265 KIAS



SIDESTEP RWY 10R	
Type	RDAF aircraft only
C-130/CL-604	<b>530</b> - 1.9 406 (500-1.9)
F-16	<b>530</b> - 2.8 406 (500-2.8)



CDFA 3.0° / 5.24%					
DME SKR	4	3	2	1	0
DIST to THR	5.1	4.1	3.1	2.1	1.1
ALT	1790	1470	1150	830	520

CATEGORY	C		D		E	
	S-TACAN 10L	430 - 750 304 (400-0.8/1.4)				
CIRCLING	800 - 2.4 659 (700-2.4)		890 - 3.6 749 (800-3.6)		1490 - 3.6 1349 (1400-3.6)	

**HI-TACAN RWY 10L** 55°13.53'N 009°15.84'E **SKRYDSTRUP (EKSP)**

CHANGES: ATC VHF FREQ.

AIR COMMAND DENMARK - MIL AIM 18 APR 2024