

MIPS INSTRUMENT APPROACH CHART

AD ELEV 141

ILS or LOC Z RWY 10L SKRYDSTRUP (EKSP)

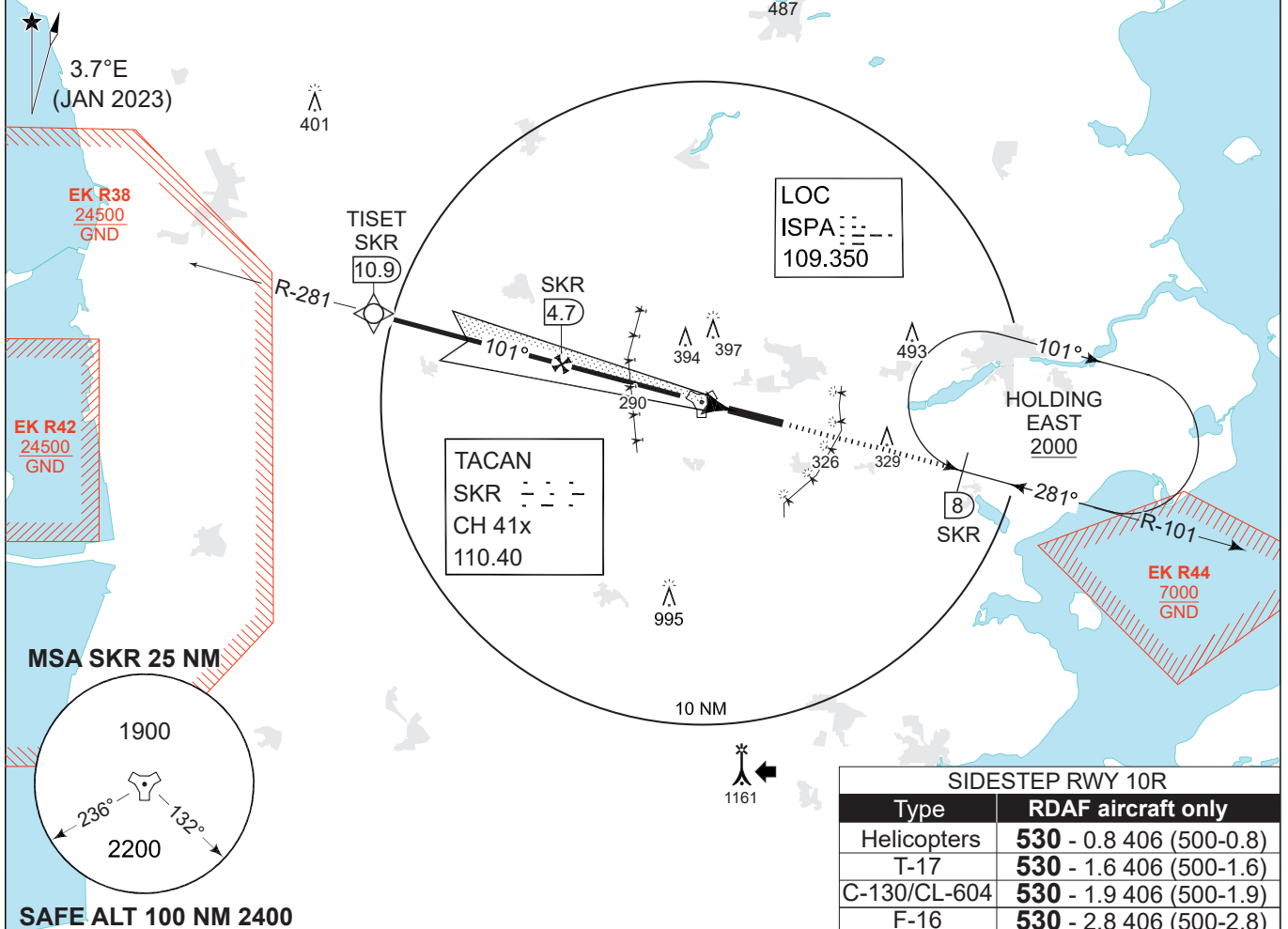
COPENHAGEN CONTROL 360.100 133.155		SKRYDSTRUP ATIS 133.905		SKRYDSTRUP APPROACH 315.100 124.105			SKRYDSTRUP TOWER 286.375 118.280		
TACAN SKR 110.4/CH 41x	LOC ISPA 109.35	APP COURSE 101°	FAP/FAF ALT 2000 FT	GS 3.00°	DA 326	THR 126	ALS length 900 M	LDA 9863 FT	

CAUTION:
THE DME INDICATIONS ARE FROM TACAN SKR
- NOT FROM THE DME ASSOCIATED WITH THE ILS

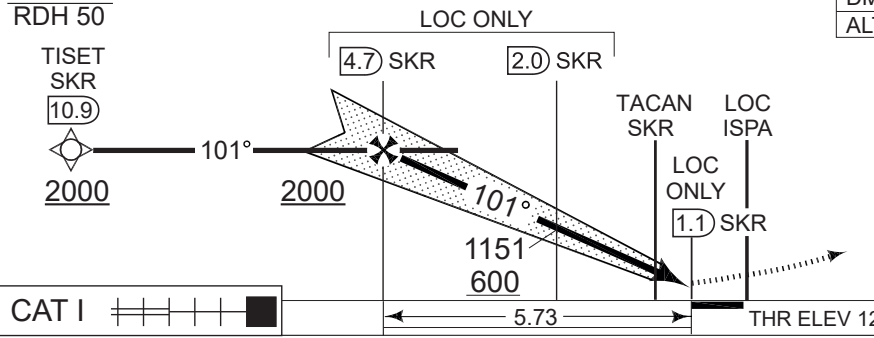
DME REQUIRED

TISET
55° 16.63'N
008° 54.41'E

NOTE: RADAR VECTORS TO FINAL REQUIRED



LOC ONLY (CDFA 3.0° / 5.24%)					
DIST TO THR (NM)	5	4	3	2	1
DME SKR (NM)	3.9	2.9	1.9	0.9	0.1
ALT	1770	1450	1140	820	500



MISSED APPROACH
Climb to 2000 FT on
R-101 to SKR 8 DME
and join holding EAST.

CAT I

CHANGES: ATC VHF FREQ.

CATEGORY	A	B	C	D	E
S-ILS 10L	326 -550 200 (200-0.8/1.2)				
S-LOC 10L	410 -750 284 (300-0.8/1.4)				
CIRCLING	630 -1.5 489 (500-1.5)	700 -1.6 559 (600-1.6)	800 -2.4 659 (700-2.4)	890 -3.6 749 (800-3.6)	1490 -3.6 1349 (1400-3.6)

ILS or LOC Z RWY 10L 55°13.53'N
009°15.84'E **SKRYDSTRUP (EKSP)**

AIR COMMAND DENMARK - MIL AIM 18 APR 2024