

MIPS INSTRUMENT APPROACH CHART

AD ELEV 141

ILS or LOC RWY 10L SKRYDSTRUP (EKSP)

| | | | | | | | | |
|---------------------------------------|--------------------|----------------------------|-------------|--|------------|---------------------|-------------------------------------|--|
| COPENHAGEN CONTROL 360.100 133.155 | | SKRYDSTRUP ATIS 133.905 | | SKRYDSTRUP APPROACH 280.750 124.105 | | | SKRYDSTRUP TOWER 286.375 118.280 | |
| LOC-DME ISPA 109.35/CH 30y | APP COURSE 101° | FAP/FAF ALT 2000 FT | GS 3.00° | DA 326 | THR 126 | ALS length 900 M | LDA 9863 FT | |

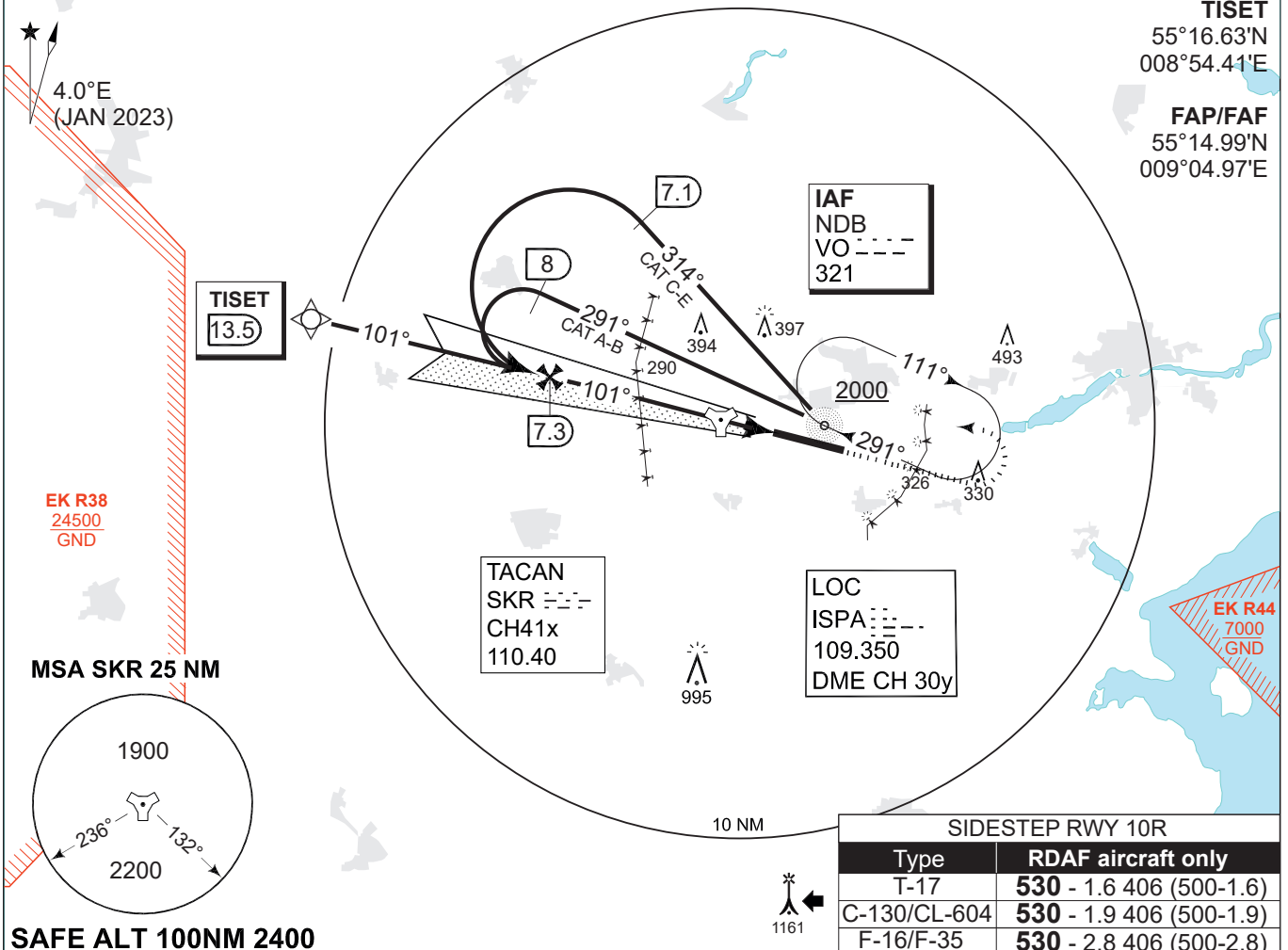
NOTE:
SPEED RESTRICTION ACFT CAT C-E:
Base turn limited to 240 KIAS maximum

ADF AND DME REQUIRED

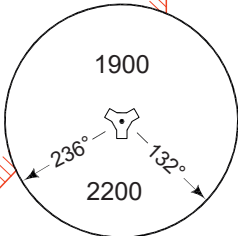
IAF (NDB VO)
55°13.48'N
009°16.42'E

TISET
55°16.63'N
008°54.41'E

FAP/FAF
55°14.99'N
009°04.97'E



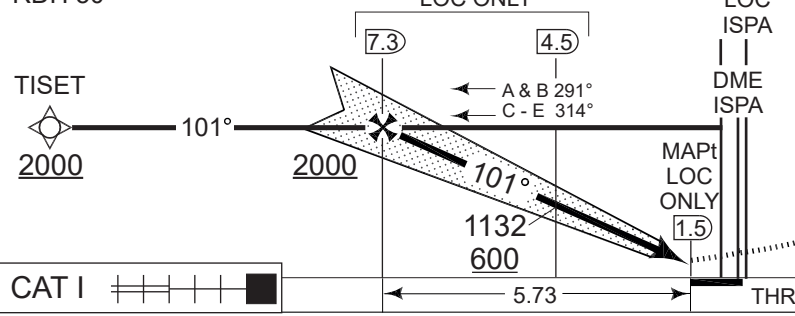
MSA SKR 25 NM



SAFE ALT 100NM 2400

| SIDESTEP RWY 10R | |
|------------------|-------------------------|
| Type | RDAF aircraft only |
| T-17 | 530 - 1.6 406 (500-1.6) |
| C-130/CL-604 | 530 - 1.9 406 (500-1.9) |
| F-16/F-35 | 530 - 2.8 406 (500-2.8) |

TA 3000
GS 3.00°
RDH 50



| LOC ONLY (CDFA 3.0° / 5.24%) | | | | | |
|------------------------------|------|------|------|-----|-----|
| DIST TO THR (NM) | 5 | 4 | 3 | 2 | 1 |
| DME ISPA (NM) | 6.5 | 5.5 | 4.5 | 3.5 | 2.5 |
| ALT | 1770 | 1450 | 1130 | 820 | 500 |

MISSED APPROACH
Climb on HDG 101° to 2000 FT.
Then turn left to join NDB VO holding.

| CATEGORY | A | B | C | D | E |
|-----------|-----------------------------------|-------------------------------|-------------------------------|-------------------------------|----------------------------------|
| S-ILS 10L | 326 -550 200 (200-0.8/1.2) | | | | |
| S-LOC 10L | 410 -750 284 (300-0.8/1.4) | | | | |
| CIRCLING | 630 -1.5 489 (500-1.5) | 700 -1.6 559 (600-1.6) | 800 -2.4 659 (700-2.4) | 900 -3.6 759 (800-3.6) | 1490 -3.6 1349 (1400-3.6) |

ILS or LOC RWY 10L

55°13.53'N
009°15.84'E

SKRYDSTRUP (EKSP)

CHANGES: MAG VAR CORRECTED. CAT D CIRCLING MINIMA RAISED.

AIR COMMAND DENMARK - MIL AIM 22 JAN 2026