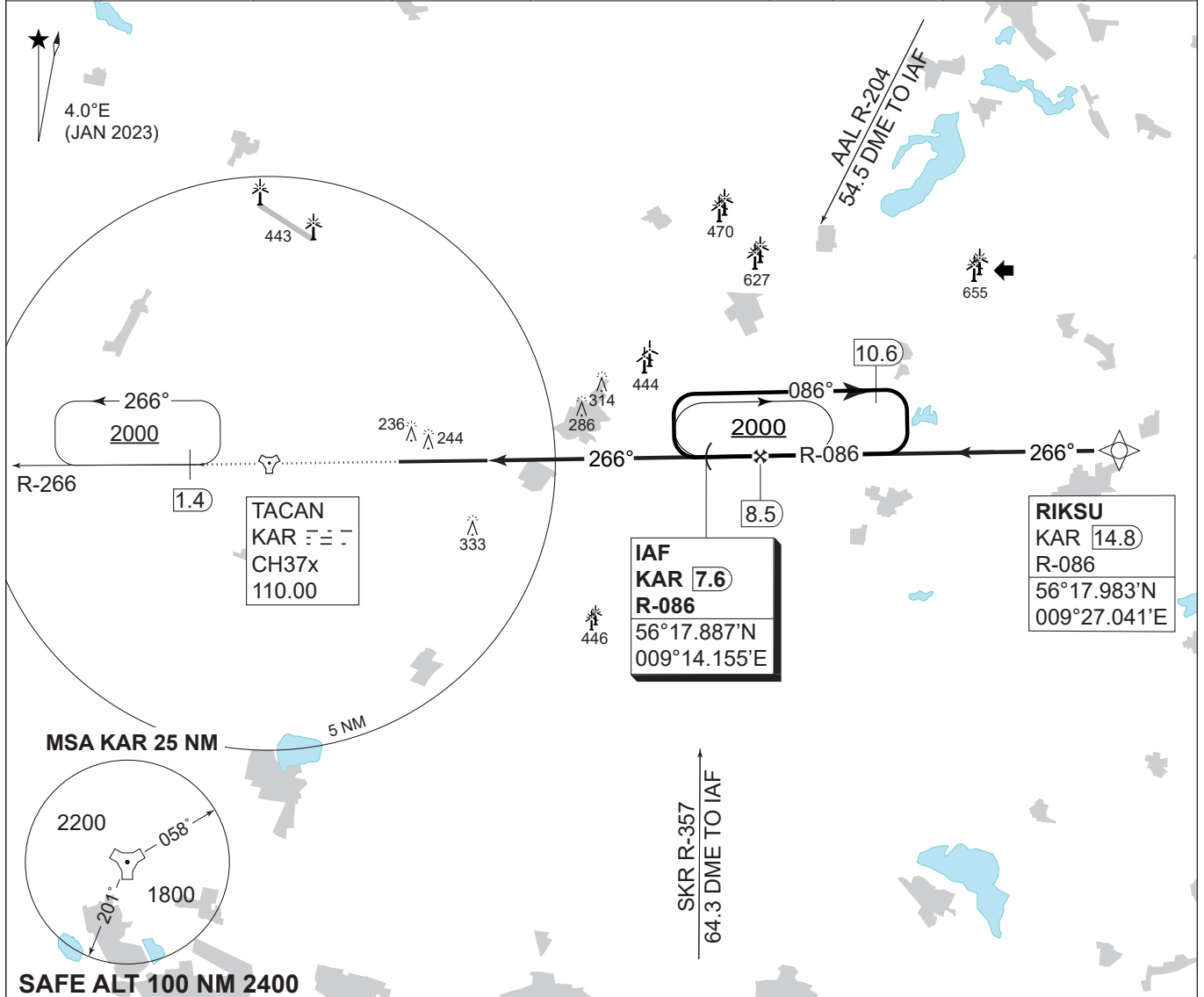


MIPS
INSTRUMENT APPROACH CHART

AD ELEV 171

COPTER TACAN RWY 27L
KARUP AIR BASE (EKKA)

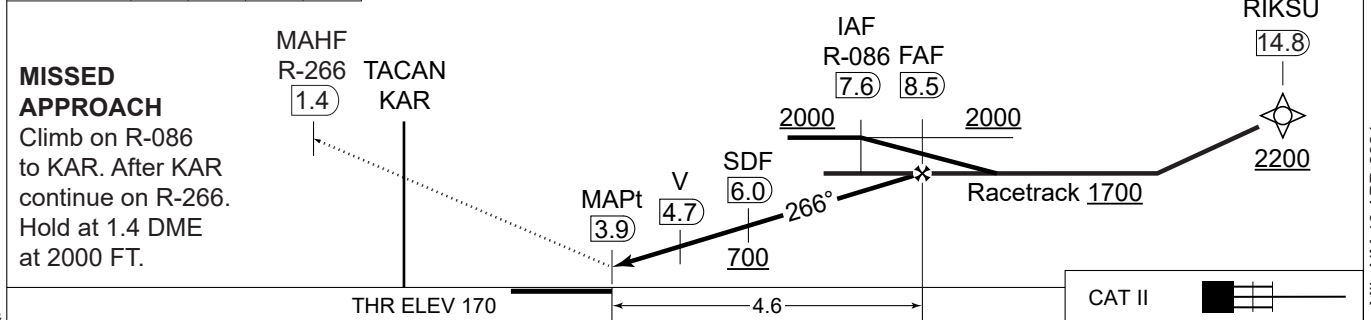
COPENHAGEN CONTROL 242.650 124.555		KARUP ATIS 120.580	KARUP APPROACH 269.275 120.430		KARUP TOWER 353.575 119.580		
TACAN KAR 110.00/CH 37x	APP COURSE 266°	FAF ALT 1700 FT	DESCENT GR. 5.24% (318 FT/NM)	MDA 500	THR ELEV 170	ALS LENGTH 900 M	LDA 9607 FT



CDFA 3.0° / 5.24%

DME KAR	5	6	7	8
DIST THR	1.1	2.1	3.1	4.1
ALT	580	900	1220	1540

TA 3000



MISSED APPROACH
Climb on R-086 to KAR. After KAR continue on R-266. Hold at 1.4 DME at 2000 FT.

CHANGES: ATC, VHF FREQ.

CATEGORY	H
MIPS H-TAC RWY 27L	500 - 400 329 (400-0.4/0.8)

AIR COMMAND DENMARK - MIL AIM 18 APR 2024