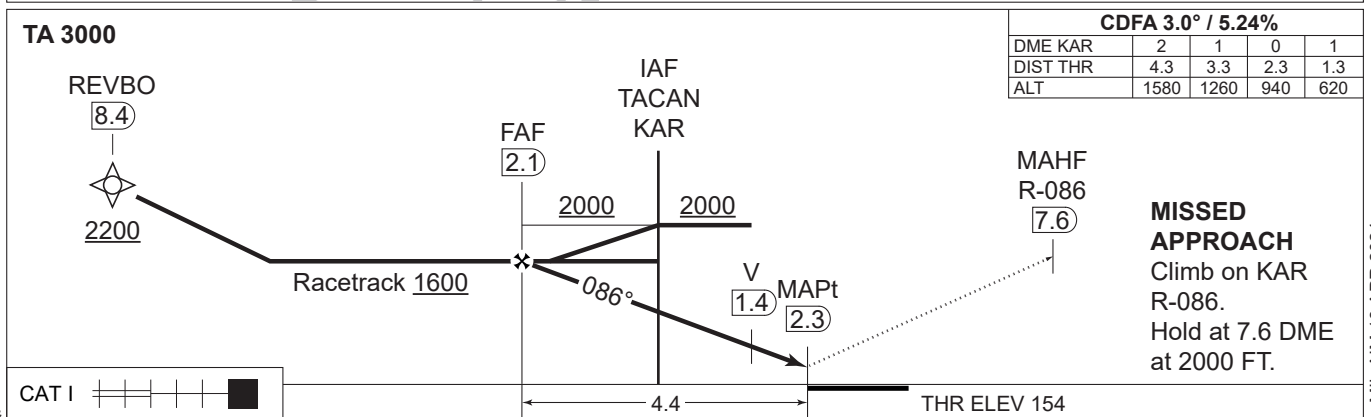
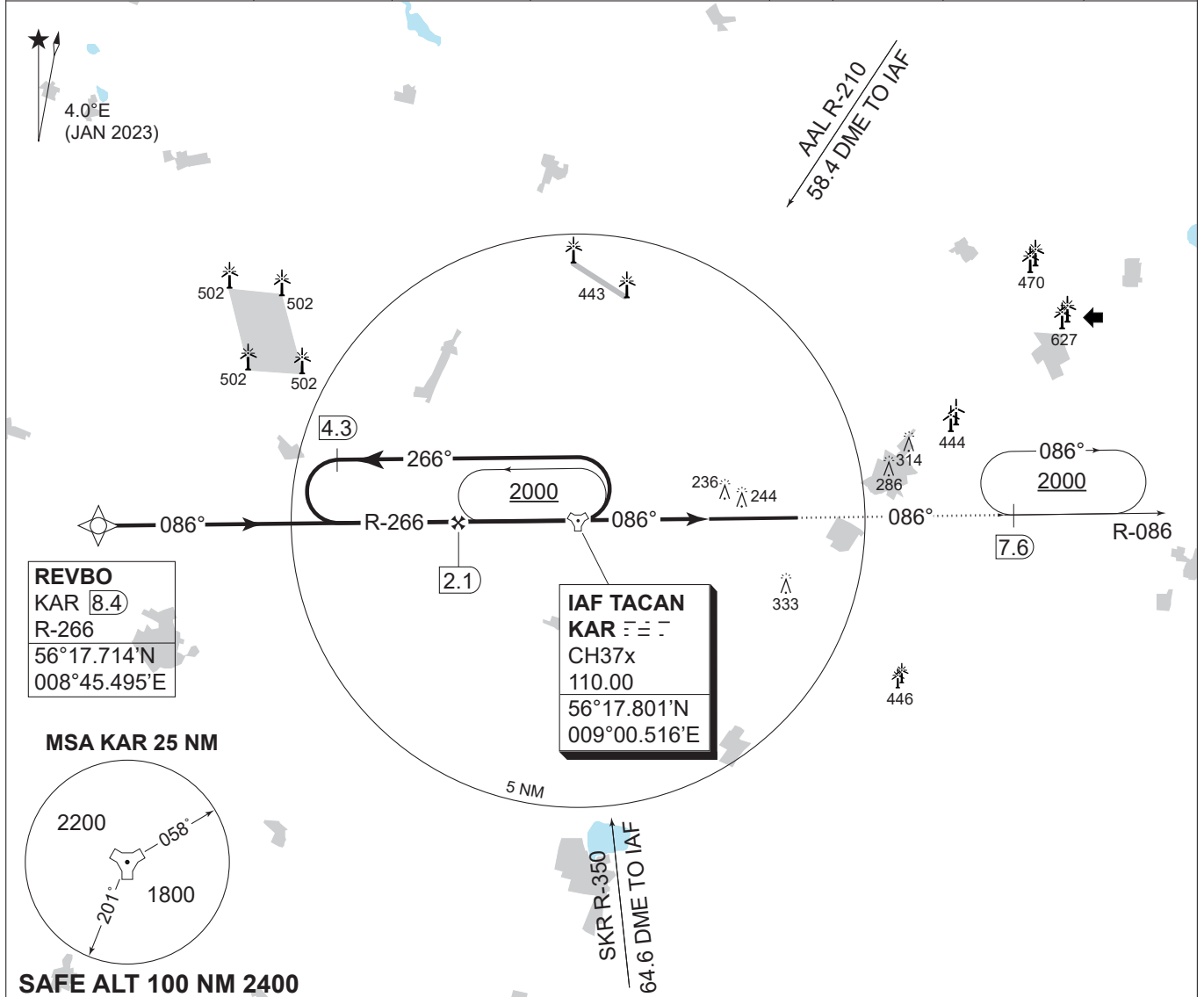


**MIPS**  
**INSTRUMENT APPROACH CHART**

**COPTER TACAN RWY 09R**  
**KARUP AIR BASE (EKKA)**

AD ELEV 171

COPENHAGEN CONTROL 242.650 124.555		KARUP ATIS 120.580	KARUP APPROACH 269.275 120.430		KARUP TOWER 353.575 119.580		
TACAN KAR 110.00/CH 37x	APP COURSE 086°	FAF ALT 1600 FT	DESCENT GR. 5.24% (318 FT/NM)	MDA 480	THR ELEV 154	ALS LENGTH 900 M	LDA 9607 FT



CAT I		H
CATEGORY		H
<b>MIPS</b>	H-TAC RWY 09R	<b>480 - 400 326 (400-0.4/0.8)</b>

**COPTER TACAN RWY 09R**

56°17.85'N  
009°07.48'E

**KARUP AIR BASE (EKKA)**

CHANGES: ATC, VHF FREQ.

AIR COMMAND DENMARK - MIL AIM 18 APR 2024