

MIPS INSTRUMENT APPROACH CHART

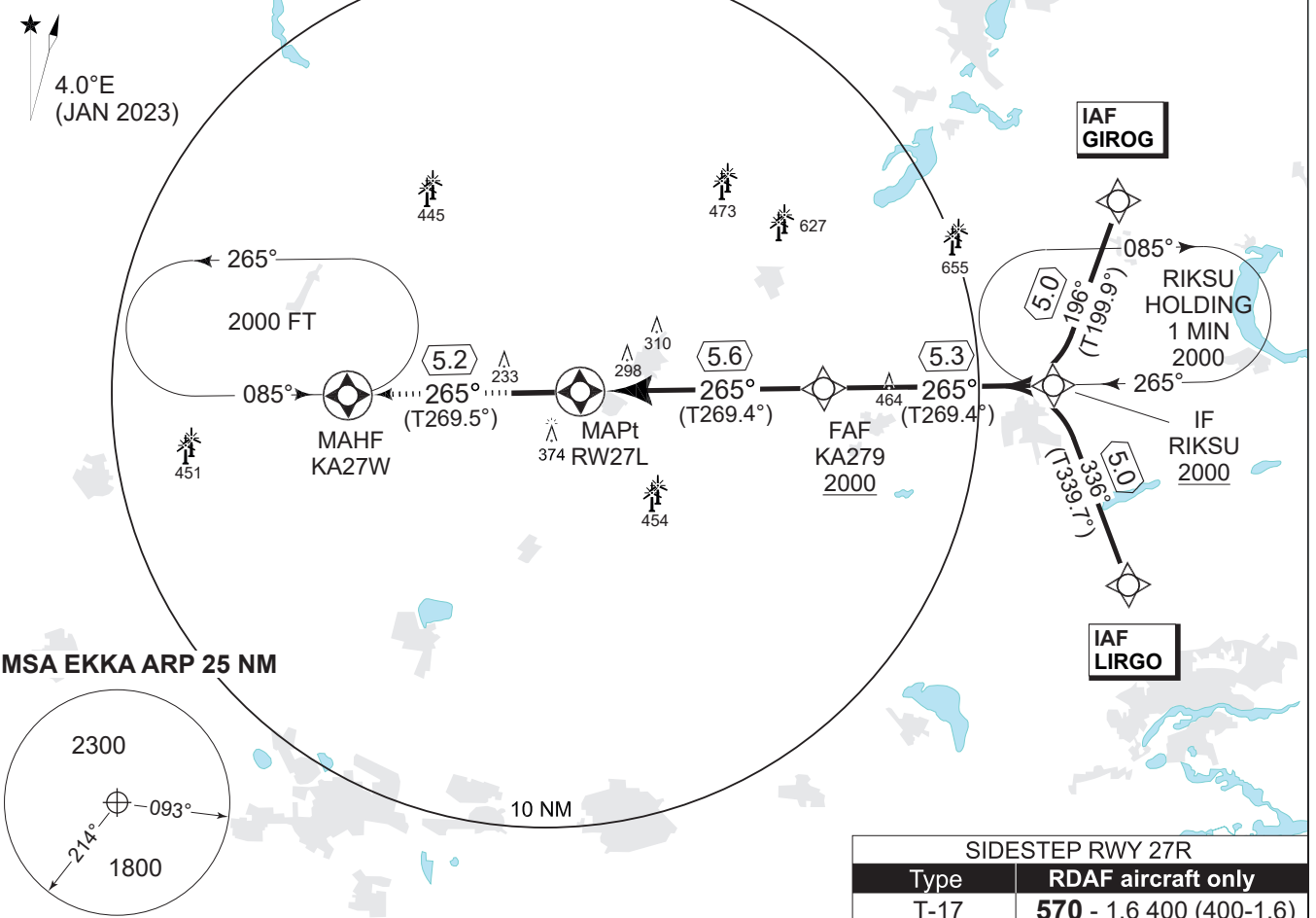
RNP RWY 27L KARUP AIR BASE (EKKA)

AD ELEV 171

COPENHAGEN CONTROL 242.650 124.555		KARUP ATIS 120.580		KARUP APPROACH 269.275 120.430		KARUP TOWER 353.575 119.580	
EGNOS CHANNEL 54104 / E27A	APP COURSE 265°	FAF ALT 2000 FT	Descent GR 3.0° (5.24%)	MINIMA See CAT	THR ELEV 170	ALS length 900 M	LDA 9607 FT

Note 1: Max speed 250 KIAS
 Note 2: PAPI and RNAV glidepath not coincident (PAPI angle 3.00° / TCH 50)

a Not to be used below -25°C

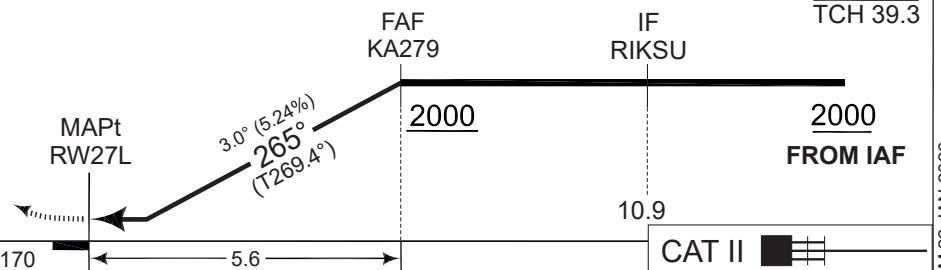


SIDESTEP RWY 27R	
Type	RDAF aircraft only
T-17	570 - 1.6 400 (400-1.6)
C-130/CL-604	570 - 1.8 400 (400-1.8)

SAFE ALT 100NM 2400

DIST TO RW27L	1	2	3	4	5	TA 3000
NOM. ALTITUDE	530	850	1170	1490	1800	GS 3.0°
						TCH 39.3

MISSED APPROACH
 Climb on track to overfly KA27W and hold at 2000 ft.
 RW27L - KA27W [A2000+,HM]



CATEGORY	A	B	C	D	E
LPV (DA)	420 - 600 250 (300-0.8/1.3)				
LNAV/VNAV (DA) a	500 - 800 330 (400-0.8/1.5)				
LNAV (MDA)	570 - 1100 399 (400-1.1/1.8)				
CIRCLING	670 - 1.5 499 (500-1.5)	680 - 1.6 509 (600-1.6)	850 - 2.4 679 (700-2.4)	880 - 3.6 709 (800-3.6)	1120 - 3.6 949 (1000-3.6)

RNP RWY 27L

56°17.85'N
009°07.48'E

KARUP AIR BASE (EKKA)

CHANGES: MULTIPLE MAGNETIC TRACKS CORRECTED. LNAV MINIMA RAISED...

AIR COMMAND DENMARK - MIL-AIM 22 JAN 2026