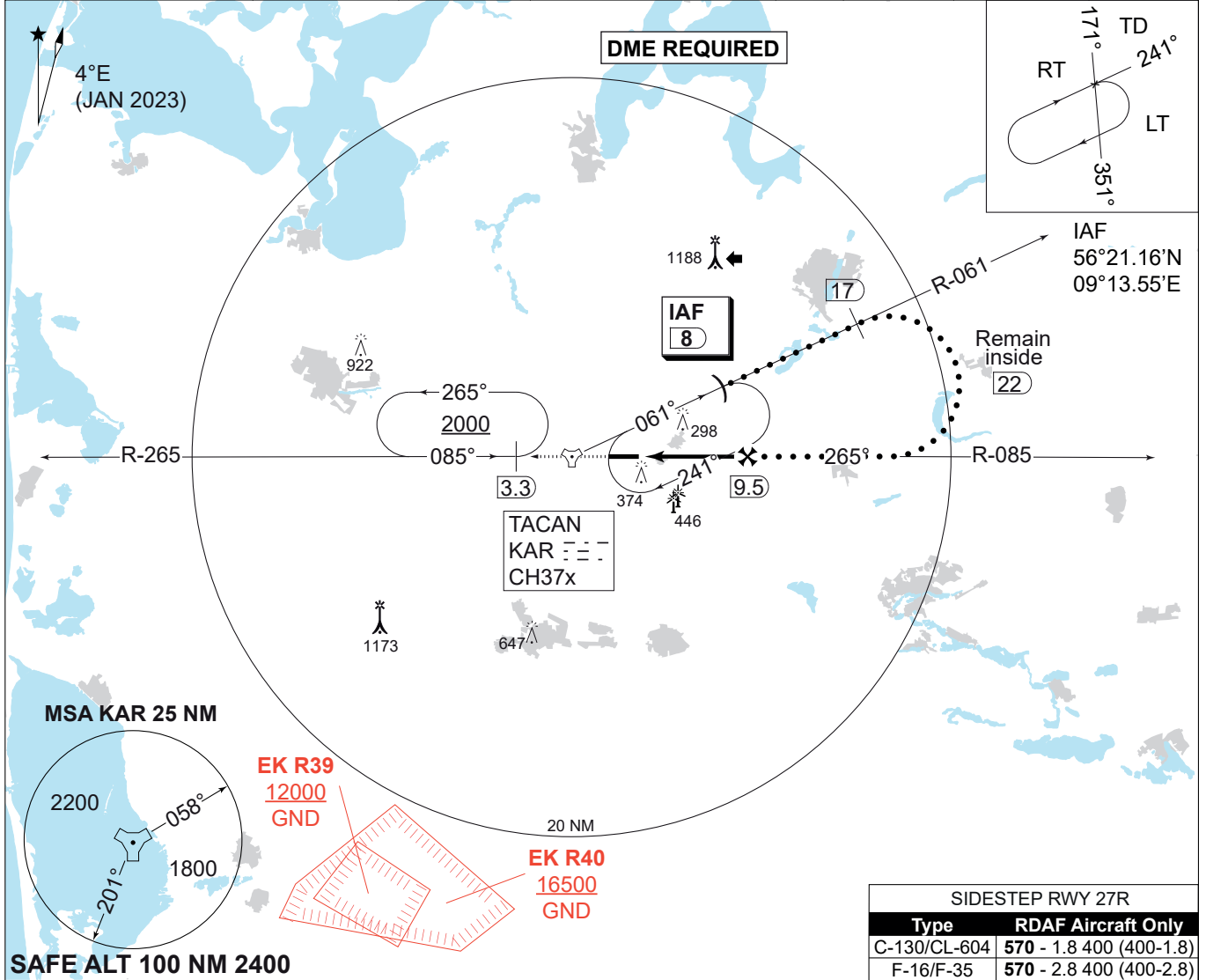


MIPS
INSTRUMENT APPROACH CHART

HPMA TACAN RWY 27L
KARUP AIR BASE (EKKA)

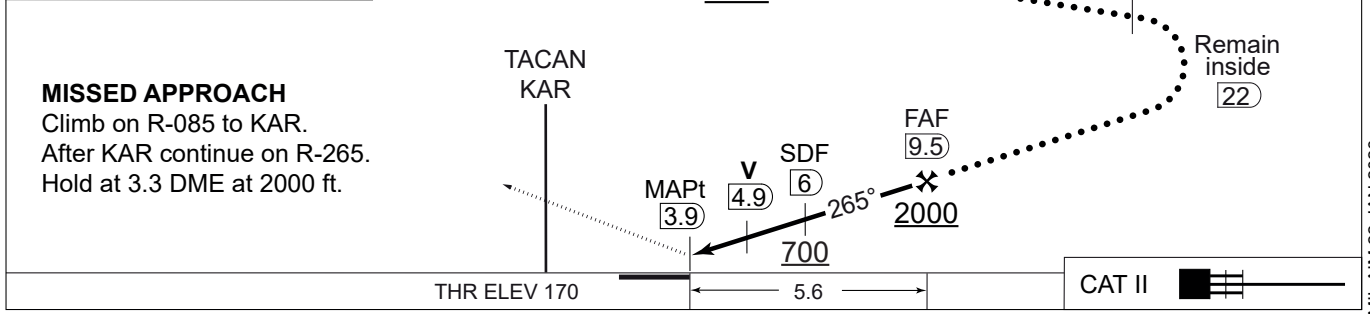
AD ELEV 171

COPENHAGEN CONTROL 242.650 124.555		KARUP ATIS 120.580		KARUP APPROACH 269.275 120.430		KARUP TOWER 353.575 119.580	
TACAN KAR CH 37x	APP COURSE 265°	FAF ALT 2000 FT	DESCENT GR. 5.24% (318 FT/NM)	MDA 560	THR ELEV 170	ALS LENGTH 900 M	LDA 9607 FT



SIDESTEP RWY 27R	
Type	RDAF Aircraft Only
C-130/CL-604	570 - 1.8 400 (400-1.8)
F-16/F-35	570 - 2.8 400 (400-2.8)

CDFA: 3.0° / 5.24%					
DME KAR	5	6	7	8	9
DIST THR	1.1	2.1	3.1	4.1	5.1
ALT	580	900	1220	1540	1850



CATEGORY	HPMA
S-TACAN 27L	560 - 1100 389 (400-1.1/1.8)
CIRCLING	750 - 3.2 579 (600-3.2)

HPMA TACAN RWY 27L 56°17.85'N
009°07.48'E **KARUP AIR BASE (EKKA)**

CHANGES: MULTIPLE COURSES CORRECTED.

AIR COMMAND DENMARK - MIL-AIM 22 JAN 2026