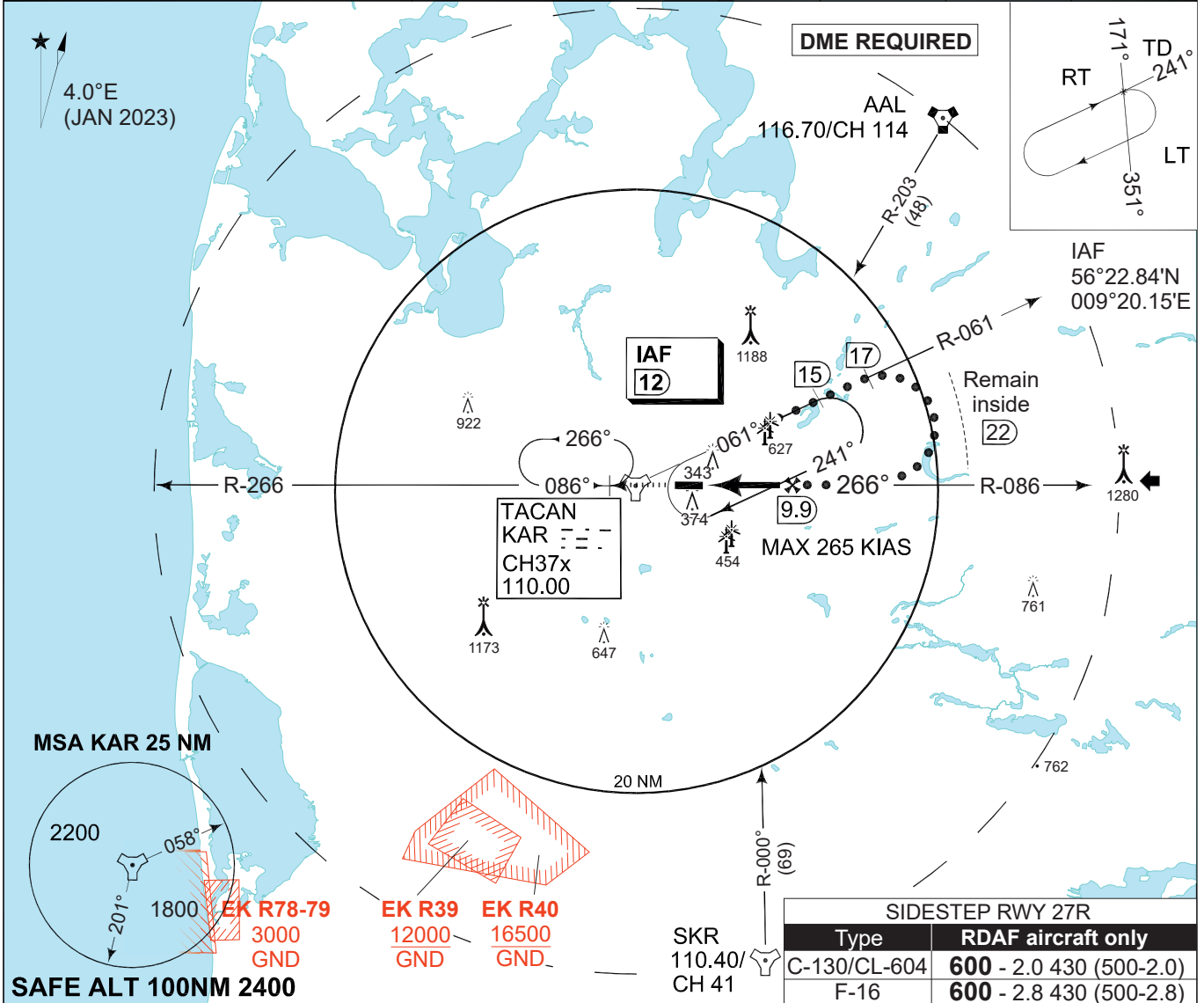


TERPS INSTRUMENT APPROACH CHART

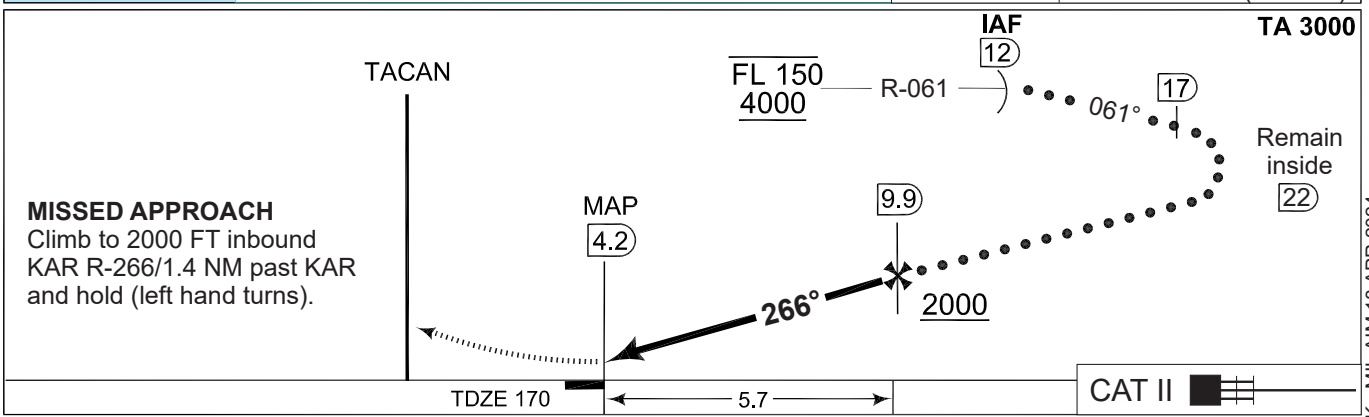
**HI-TACAN RWY 27L
KARUP AIR BASE (EKKA)**

AD ELEV 171

COPENHAGEN CONTROL 242.650 124.555		KARUP ATIS 120.580	KARUP APPROACH 269.275 120.430		KARUP TOWER 353.575 119.580		
TACAN KAR 110.00/CH 37x	APP COURSE 266°	FAF ALT 2000 FT	DESCENT GR 305 FT/NM	MDA 600	TDZE 170	ALS length 900 M	LDA 9607 FT



SAFE ALT 100NM 2400



CATEGORY	C		D		E	
	S-TACAN 27L	600	-1200 430 (500-1.2/2.0)	600	-1200 430 (500-1.2/2.4)	
CIRCLING	680	-2400 510 (600-2.4)	720	-3200 550 (600-3.2)	780	-3600 610 (700-3.6)

HI-TACAN RWY 27L 56°17.85'N
009°07.48'E **KARUP AIR BASE (EKKA)**

CHANGES: ATC VHF FREQ.

AIR COMMAND DENMARK - MIL AIM 18 APR 2024