

**MIPS**  
**INSTRUMENT APPROACH CHART**

**COPTER ILS or LOC RWY 27L**  
**KARUP AIR BASE (EKKA)**

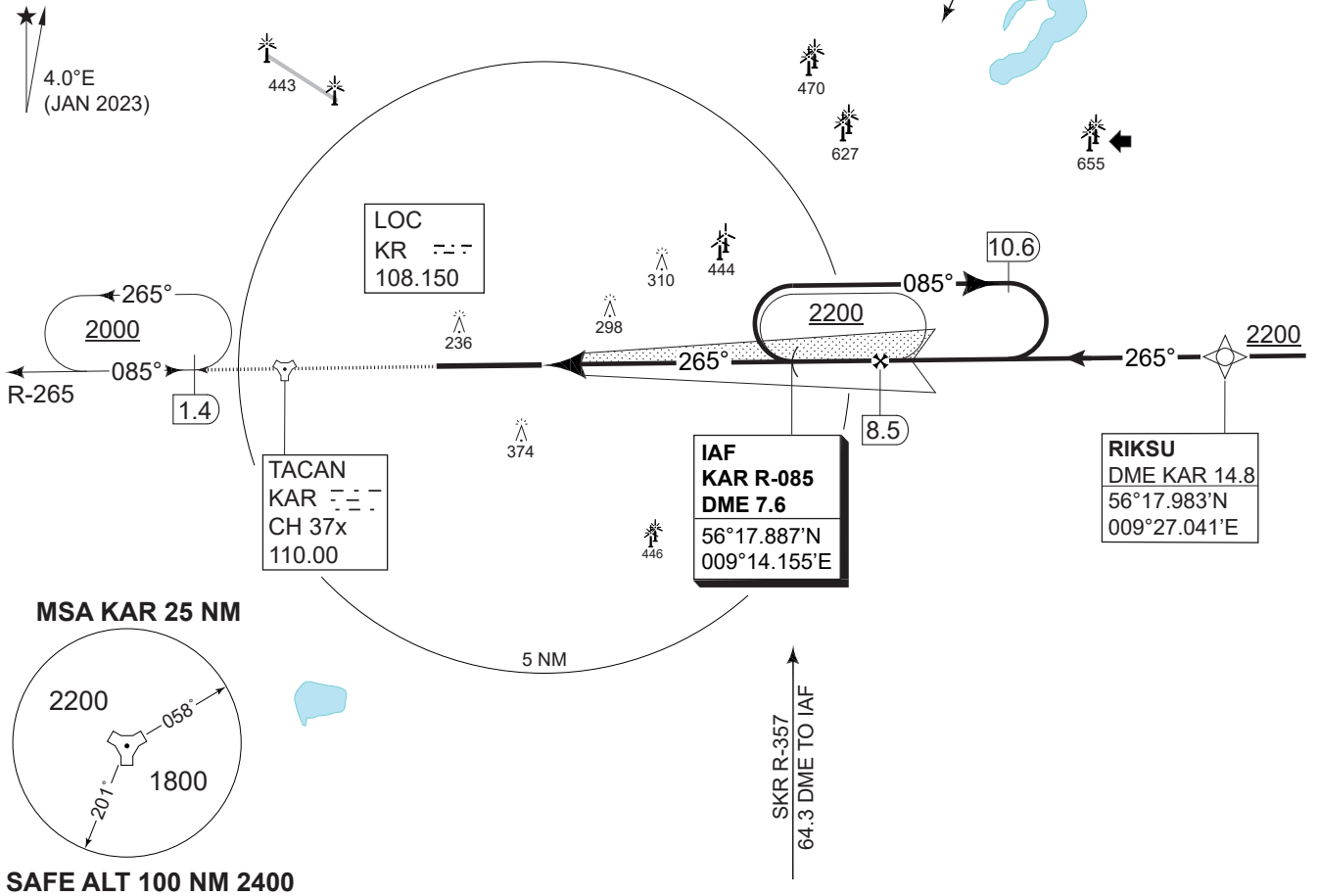
AD ELEV 171

COPENHAGEN CONTROL 242.650 124.555		KARUP ATIS 120.580		KARUP APPROACH 269.275 120.430			KARUP TOWER 353.575 119.580		
TACAN KAR 110.00/CH 37x	LOC KR 108.150	APP COURSE 265°	GS INTCP ALT 1700 FT	GS 3.00°	DA <b>370</b>	THR ELEV 170	ALS LENGTH 900 M	LDA 9607 FT	

**CAUTION:**  
THE DME INDICATIONS ARE FROM TACAN KAR  
- NOT FROM THE DME ASSOCIATED WITH THE ILS

**a** For aircraft using auto-coupled to below  
DH RVR may be reduced to RVR 300 m.

**TACAN REQUIRED**



**SAFE ALT 100 NM 2400**

LOC ONLY: CDFA 3.00° / 5.24%								<b>TA 3000</b>	
DME KAR	5	6	7	8	MAPt (LOC) KAR	SDF KAR	IAF KAR R-085	FAF (LOC) KAR	GS 3.0°
DIST THR	1.1	2.1	3.1	4.1	3.9	6.0	7.6	8.5	RDH 50
ALT	580	900	1220	1540					
<b>MISSED APPROACH</b> Climb on track 265 to KAR. After KAR continue on R-265. Hold at 1.4 DME at 2000 ft.					THR ELEV 170				
MAHF KAR R-265 1.4					CAT II				

<b>MIPS</b>	CATEGORY	H
	H-ILS CAT I 27L	<b>370</b> - 400 200 (200-0.4/0.8)
	H-ILS CAT II 27L <b>a</b>	<b>RA 106</b> (DA 270) - 350 100
	H-LOC 27L	<b>480</b> - 400 310 (400-0.4/0.8)

CHANGES: IAF KAR R-086 CORRECTED TO R-085.

AIR COMMAND DENMARK - MIL AIM 19 FEB 2026

**COPTER ILS or LOC RWY 27L**

56°17.85'N  
009°07.48'E

**KARUP AIR BASE (EKKA)**