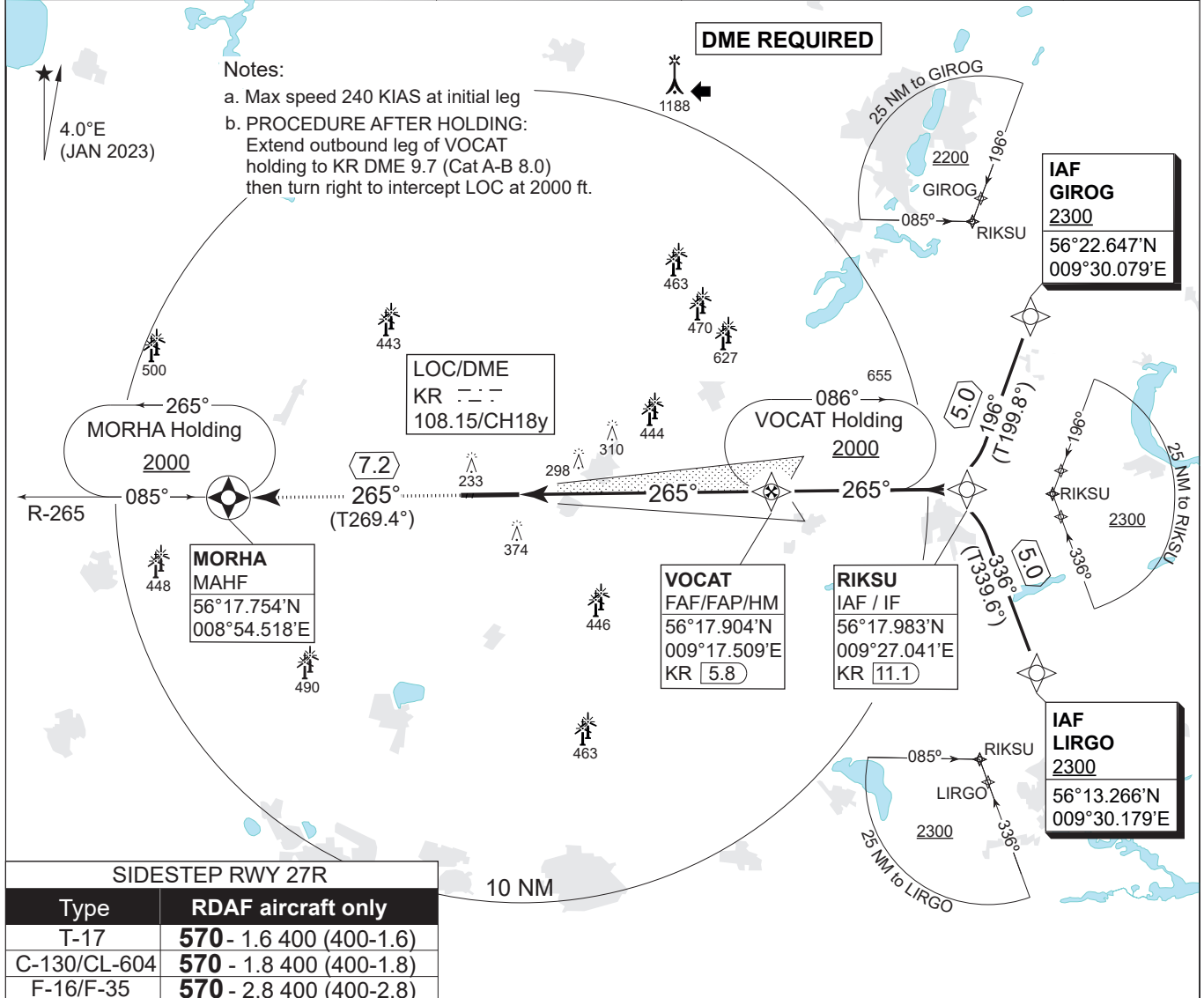


**MIPS**  
**INSTRUMENT APPROACH CHART**

**ILS or LOC RWY 27L**  
**KARUP AIR BASE (EKKA)**

AD ELEV 171

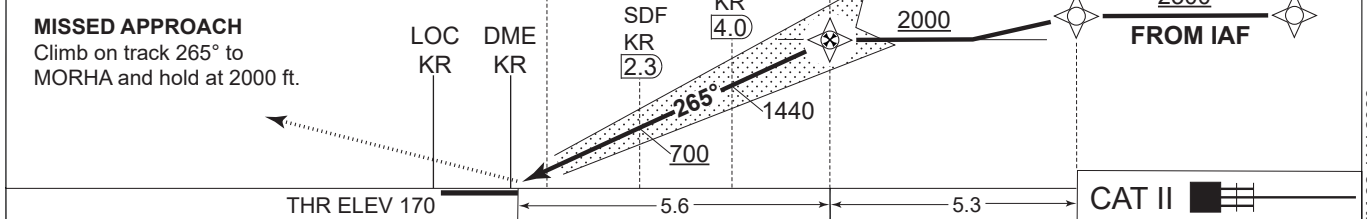
COPENHAGEN CONTROL 242.650 124.555		KARUP ATIS 120.580		KARUP APPROACH 269.275 120.430			KARUP TOWER 353.575 119.580	
LOC/DME KR 108.150/CH18y	APP COURSE 265°	GS INTCP ALT 2000 FT	GS 3.00°	DA 370	THR ELEV 170	ALS LENGTH 900 M	LDA 9607 FT	



**SIDESTEP RWY 27R**

Type	RDAF aircraft only
T-17	570 - 1.6 400 (400-1.6)
C-130/CL-604	570 - 1.8 400 (400-1.8)
F-16/F-35	570 - 2.8 400 (400-2.8)

LOC ONLY: CDFA 3.00° / 5.24%					MAPt KR 0.6	LOC ONLY	FAF VOCAT KR 5.8	IAF / IF RIKSU KR 11.1	TA 3000 GS 3.0° RDH 50	
DME KR	1	2	3	4						5
DIST THR	0.8	1.8	2.8	3.8						4.8
ALT	490	810	1120	1440	1760					



CATEGORY	A	B	C	D	E
S-ILS CAT I	370 - 550 200 (200-0.8/1.2)				
S-ILS CAT II	RA 106 (DA 270) - 350 100				N/A
S-LOC 27L	480 - 750 310 (400-0.8/1.4)				
CIRCLING	670 - 1.5 499 (500-1.5)	680 - 1.6 509 (600-1.6)	840 - 2.4 669 (700-2.4)	880 - 3.6 709 (800-3.6)	1120 - 3.6 949 (1000-3.6)

**ILS or LOC RWY 27L** 56°17.85'N  
009°07.48'E **KARUP AIR BASE (EKKA)**

CHANGES: MULTIPLE MAGNETIC TRACKS CORRECTED

AIR COMMAND DENMARK - MIL-AM 22 JAN 2026