

MIPS

INSTRUMENT APPROACH CHART

AD ELEV 171

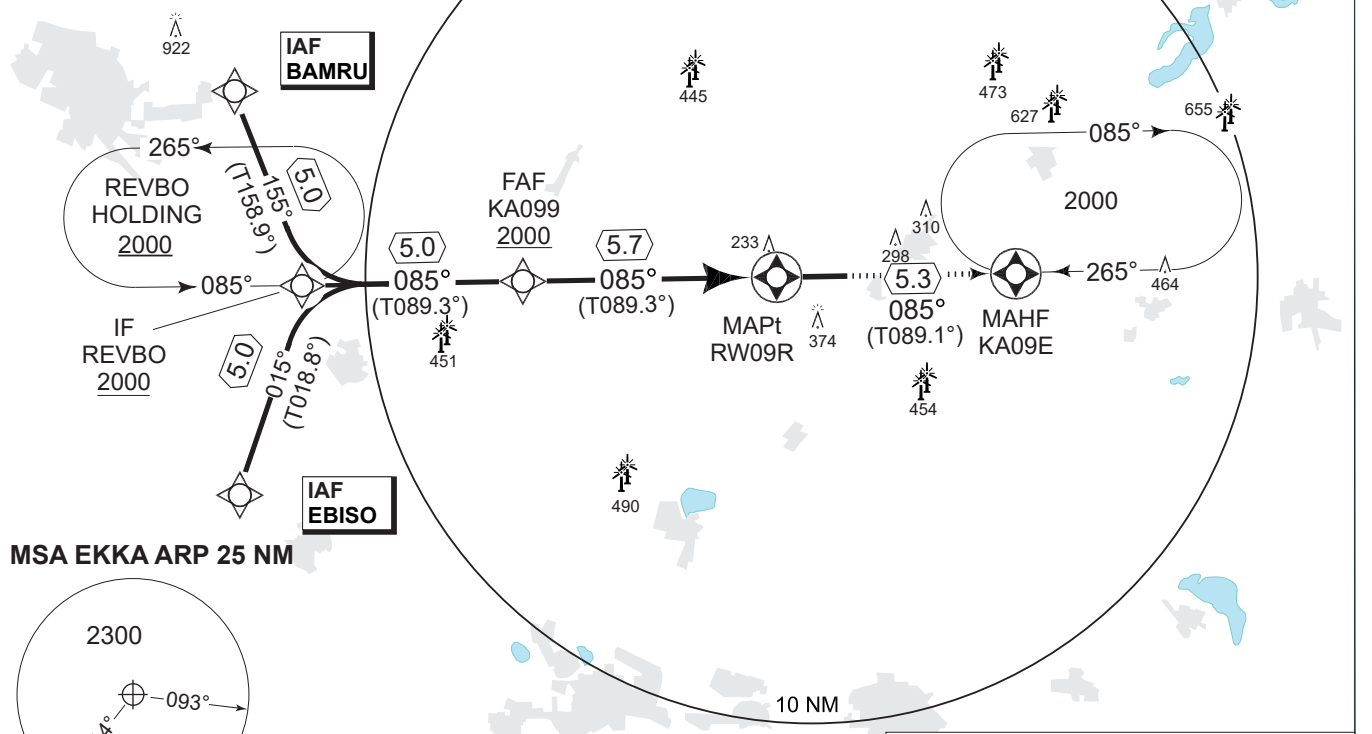
RNP RWY 09R
KARUP AIR BASE (EKKA)

COPENHAGEN CONTROL 242.650 124.555		KARUP ATIS 120.580	KARUP APPROACH 269.275 120.430		KARUP TOWER 353.575 119.580		
EGNOS CHANNEL 46175 / E09A	APP COURSE 085°	FAF ALT 2000 FT	Descent GR 3.0° (5.24%)	MINIMA See CAT	THR ELEV 154	ALS length 900 M	LDA 9607 FT

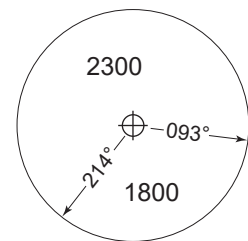
Note 1: Max speed 250 KIAS
Note 2: PAPI and RNAV glidepath not coincident (PAPI angle 3.00° / TCH 50)

a Not to be used below -25°C

4.0°E
(JAN 2023)



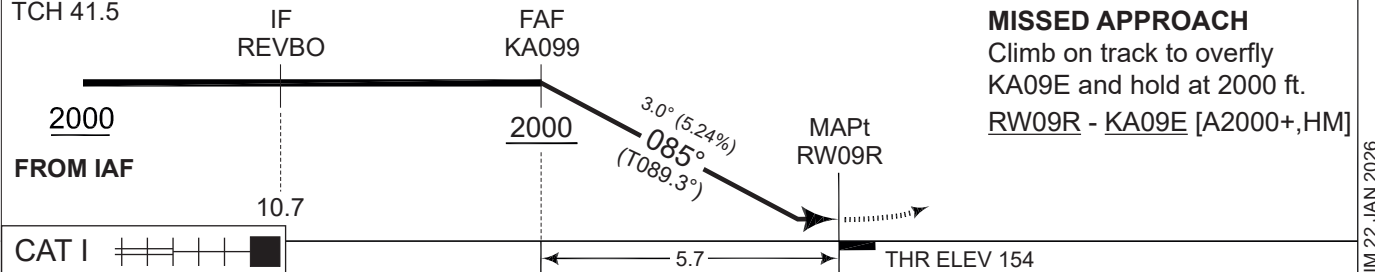
MSA EKKA ARP 25 NM



SIDESTEP RWY 09L	
Type	RDAF aircraft only
T-17	560 - 1.6 400 (400-1.6)
C-130/CL-604	560 - 1.8 400 (400-1.8)

SAFE ALT 100NM 2400

TA 3000 GS 3.0° TCH 41.5	DIST TO RW09R	5	4	3	2	1
	NOM. ALTITUDE	1790	1470	1150	830	520



CATEGORY	A	B	C	D	E
LPV (DA)	404 - 600 250 (300-0.8/1.3)				
LNAV/VNAV (DA) a	454 - 650 300 (300-0.8/1.4)				
LNAV (MDA)	490 - 800 336 (400-0.8/1.5)				500 - 900 346 (400-0.9/1.6)
CIRCLING	670 - 1.5 499 (500-1.5)	680 - 1.6 509 (600-1.6)	850 - 2.4 679 (700-2.4)	880 - 3.6 709 (800-3.6)	1120 - 3.6 949 (1000-3.6)

RNP RWY 09R

56°17.85'N
009°07.48'E
5-6

KARUP AIR BASE (EKKA)

CHANGES: MULTIPLE MAGNETIC TRACKS CORRECTED.

AIR COMMAND DENMARK - MIL AIM 22 JAN 2026