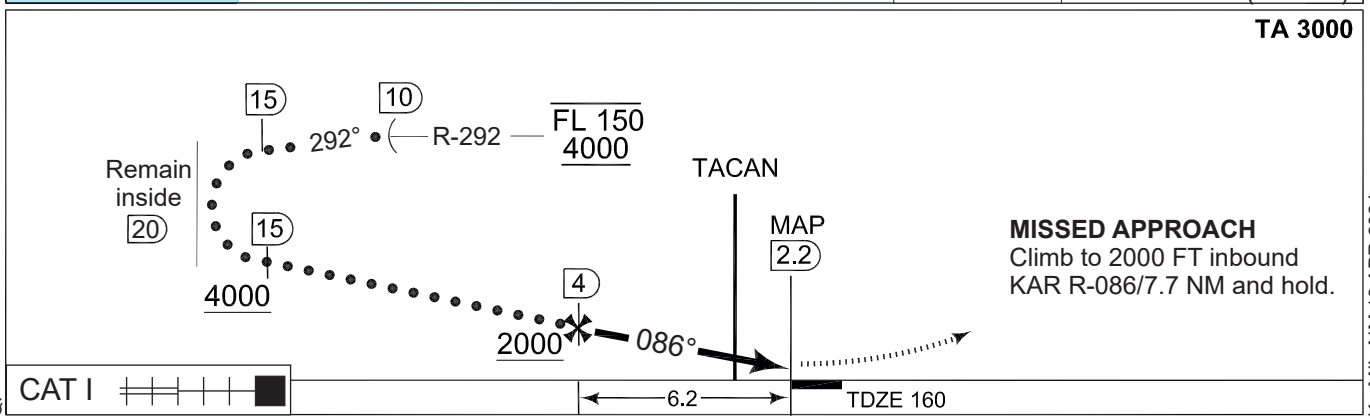
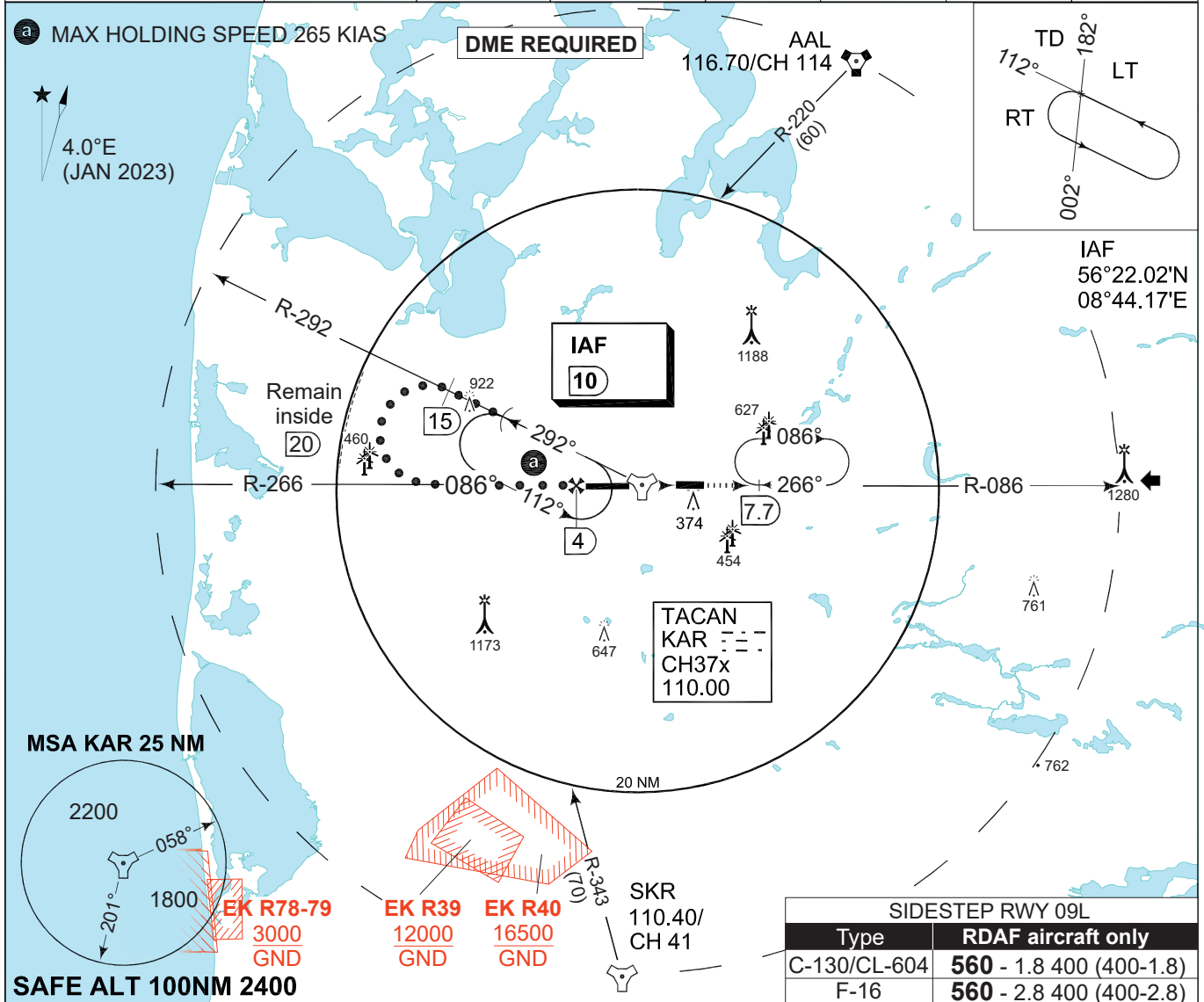


**TERPS INSTRUMENT APPROACH CHART**

**HI-TACAN RWY 09R  
KARUP AIR BASE (EKKA)**

AD ELEV 171

COPENHAGEN CONTROL 242.650 124.555		KARUP ATIS 120.580	KARUP APPROACH 269.275 120.430		KARUP TOWER 353.575 119.580		
TACAN KAR 110.00/CH 37x	APP COURSE 086°	FAF ALT 2000 FT	DESCENT GR 292 FT/NM	MDA <b>500</b>	TDZE 160	ALS length 900 M	LDA 9607 FT



CATEGORY	C		D		E	
	S-TACAN 09R	500 -1200 340 (400-1.2/1.6)		500 -1200 340 (400-1.2/2.0)		
CIRCLING	680 -2400 510 (600-2.4)		720 -3200 550 (600-3.2)		780 -3600 610 (700-3.6)	

**HI-TACAN RWY 09R** 56°17.85'N  
009°07.48'E **KARUP AIR BASE (EKKA)**

CHANGES: ATC VHF FREQ.

AIR COMMAND DENMARK - MIL AIM 18 APR 2024