

**MIPS**  
**INSTRUMENT APPROACH CHART**

**COPTER ILS or LOC RWY 09R**  
**KARUP AIR BASE (EKKA)**

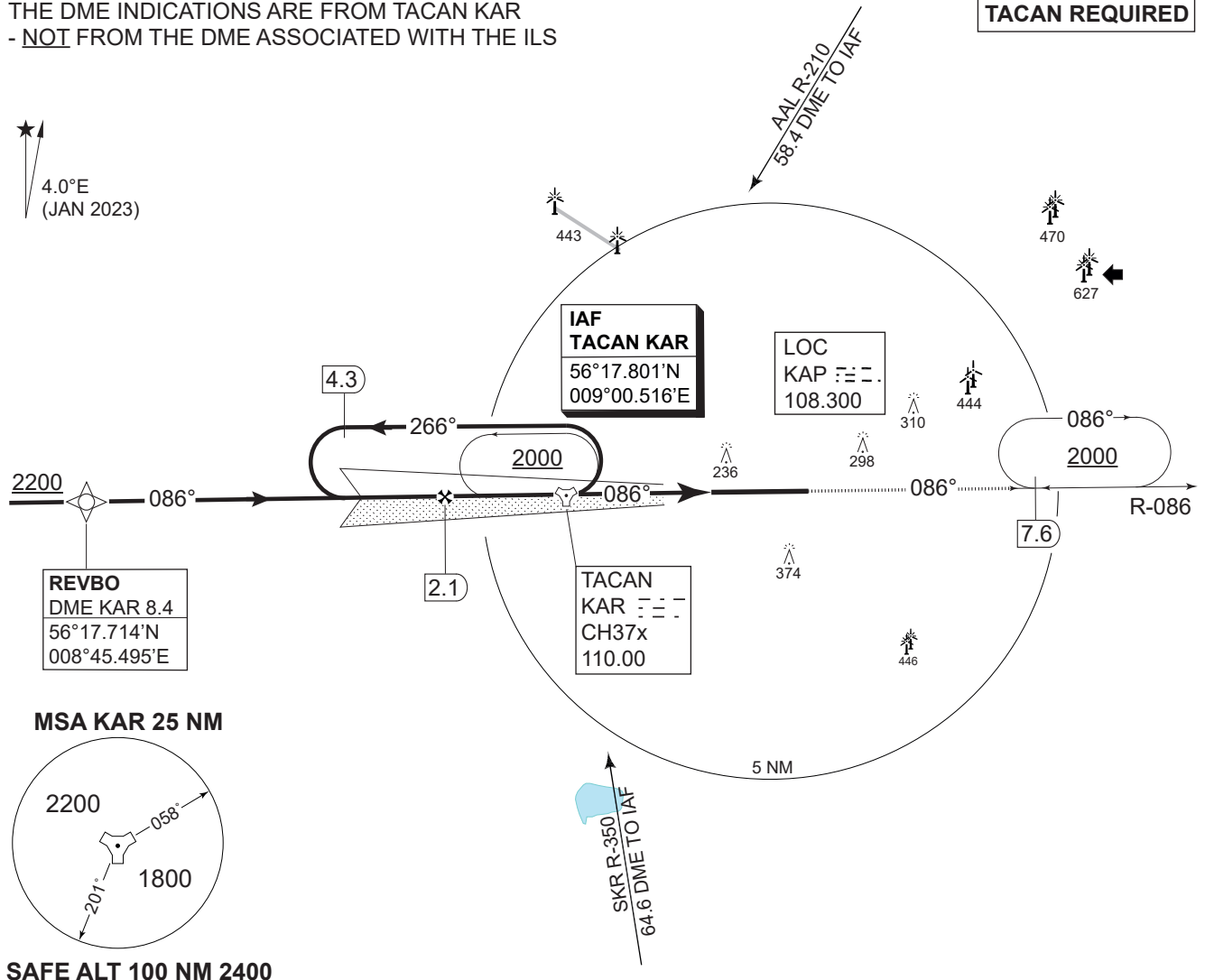
AD ELEV 171

COPENHAGEN CONTROL 242.650 124.555		KARUP ATIS 120.580	KARUP APPROACH 269.275 120.430				KARUP TOWER 353.575 119.580	
TACAN KAR 110.00/CH 37x	LOC KAP 108.300	APP COURSE 086°	GS INTCP ALT 1600 FT	GS 3.00°	DA <b>354</b>	THR ELEV 154	ALS LENGTH 900 M	LDA 9607 FT

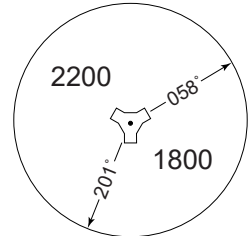
**CAUTION:**  
THE DME INDICATIONS ARE FROM TACAN KAR  
- NOT FROM THE DME ASSOCIATED WITH THE ILS

**TACAN REQUIRED**

4.0°E  
(JAN 2023)



**MSA KAR 25 NM**



**SAFE ALT 100 NM 2400**

LOC ONLY: CDFA 3.00° / 5.24%								<b>TA 3000</b>
DME KAR	2	1	0	1				<b>GS 3.0°</b>
DIST THR	4.3	3.3	2.3	1.3				<b>RDH 50</b>
ALT	1580	1260	940	620				

REVBO 8.4	FAF (LOC) KAR 2.1	IAF TACAN KAR 2.3	LOC KAP	MAHF KAR 7.6
--------------	----------------------	----------------------	---------	-----------------

Racetrack 1600

MISSED APPROACH: Climb on KAR R-086. Hold at 7.6 DME at 2000 ft.

THR ELEV 154

CHANGES: ATC VHF FREQ.

<b>MIPS</b>	CATEGORY	H
	H-ILS CAT I 09R	<b>354</b> - 400 200 (200-0.4/0.8)
	H-LOC 09R	<b>470</b> - 400 316 (400-0.4/0.8)

**COPTER ILS or LOC RWY 09R**

56°17.85'N  
009°07.48'E

**KARUP AIR BASE (EKKA)**

AIR COMMAND DENMARK - MIL AIM 18 APR 2024