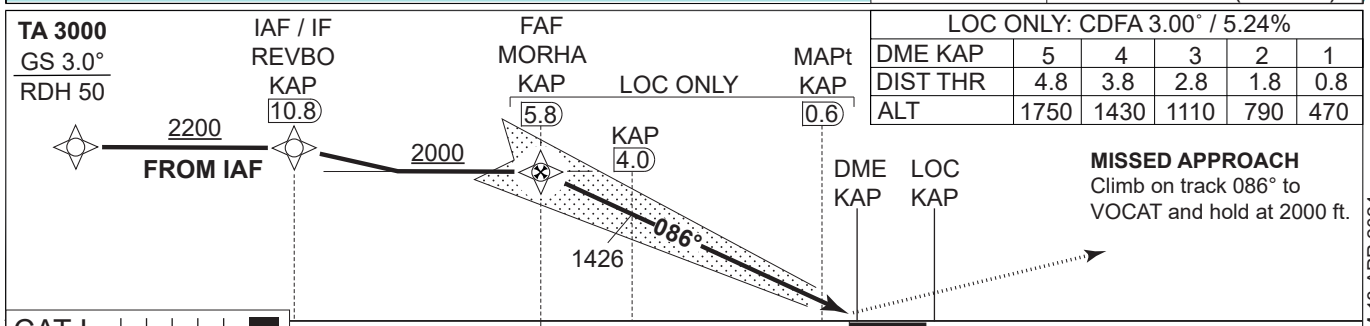
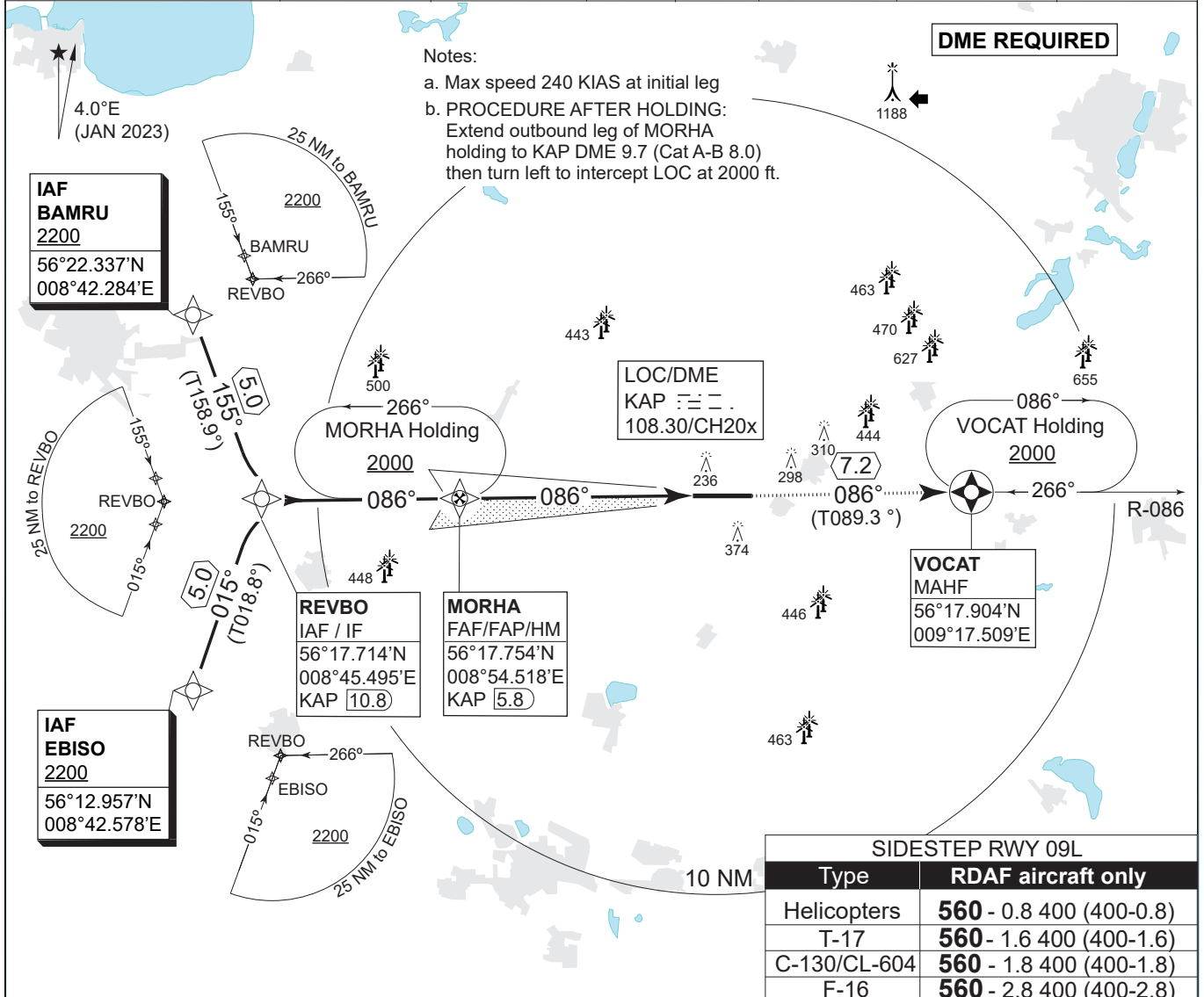


MIPS INSTRUMENT APPROACH CHART

**ILS or LOC RWY 09R
KARUP AIR BASE (EKKA)**

AD ELEV 171

COPENHAGEN CONTROL 242.650 124.555		KARUP ATIS 120.580		KARUP APPROACH 269.275 120.430			KARUP TOWER 353.575 119.580	
LOC/DME KAP 108.300/CH20X	APP COURSE 086°	GS INTCP ALT 2000 FT	GS 3.00°	DA 354	THR ELEV 154	ALS LENGTH 900 M	LDA 9607 FT	



CATEGORY	A	B	C	D	E
S-ILS CAT I	354 - 550 200 (200-0.8/1.2)				
S-LOC 09R	470 - 750 316 (400-0.8/1.4)				
CIRCLING	670 - 1.5 499 (500-1.5)	680 - 1.6 509 (600-1.6)	840 - 2.4 669 (700-2.4)	880 - 3.6 709 (800-3.6)	1120 - 3.6 949 (1000-3.6)

ILS or LOC RWY 09R 56°17.85'N
009°07.48'E **KARUP AIR BASE (EKKA)**

CHANGES: ATC VHF FREQ.

AIR COMMAND DENMARK - MIL AIM 18 APR 2024