

ATC clearance for VFR traffic will normally be issued via the routes indicated.

Arriving VFR traffic may be requested to hold at one of the holding patterns indicated.

▲ Reporting point for arriving VFR traffic.

⋯ VFR route.

IP East (RWY 26):

57 04.2N 010 02.3E / AAL R-143 2.5 NM

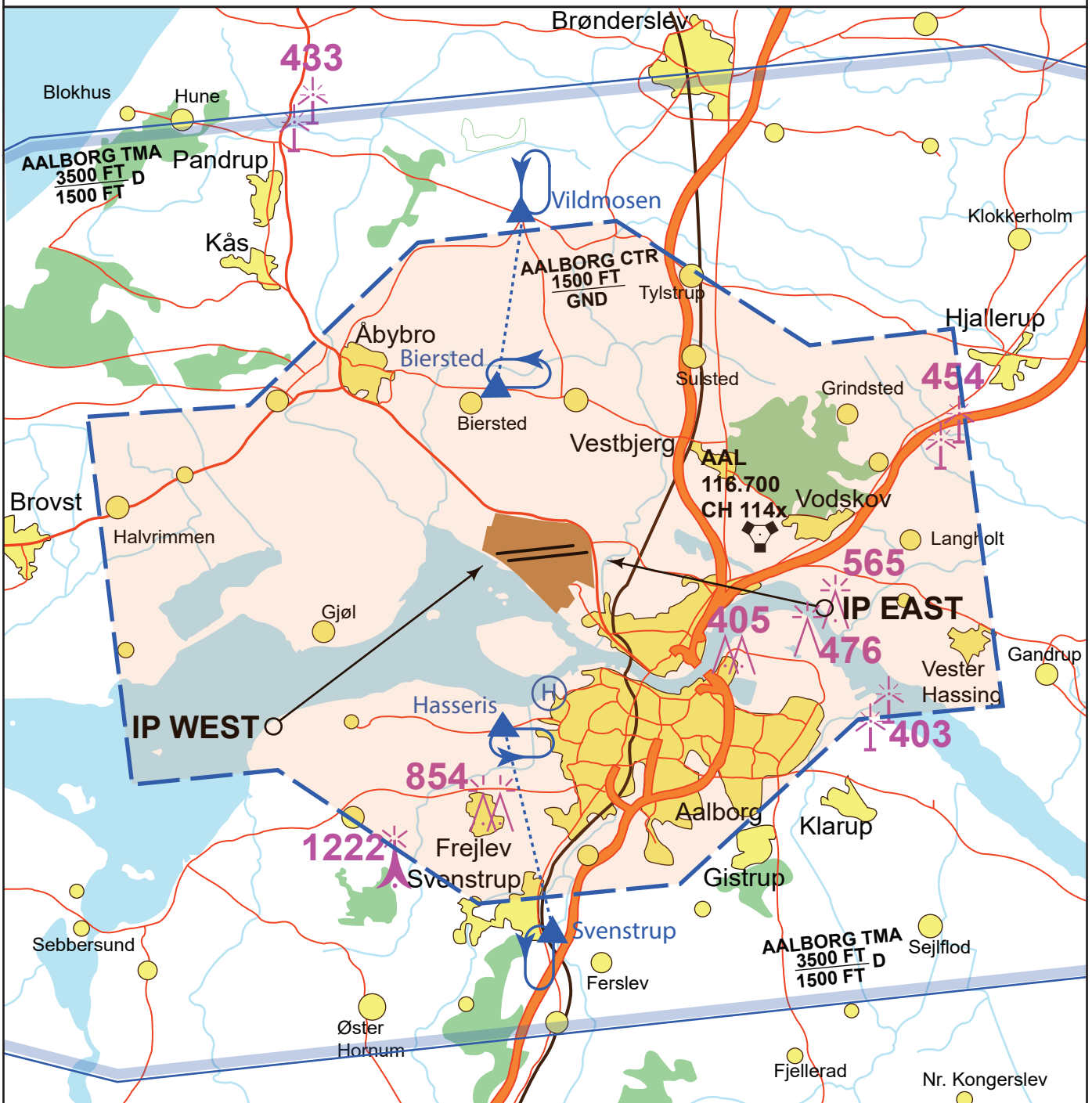
Right hand break only to RWY 26R and 26L

IP West (RWY 08)

57 01.7N 009 40.4E / AAL R-246 11.4 NM.

Left hand break only to RWY 08L and 08R

Note: Rejoin procedures to IP is a turn to the south to re-enter the traffic pattern via IP. Avoid overflying areas described on Noise abatement chart (EKYT NAC).



CHANGES: EDITORIAL.