

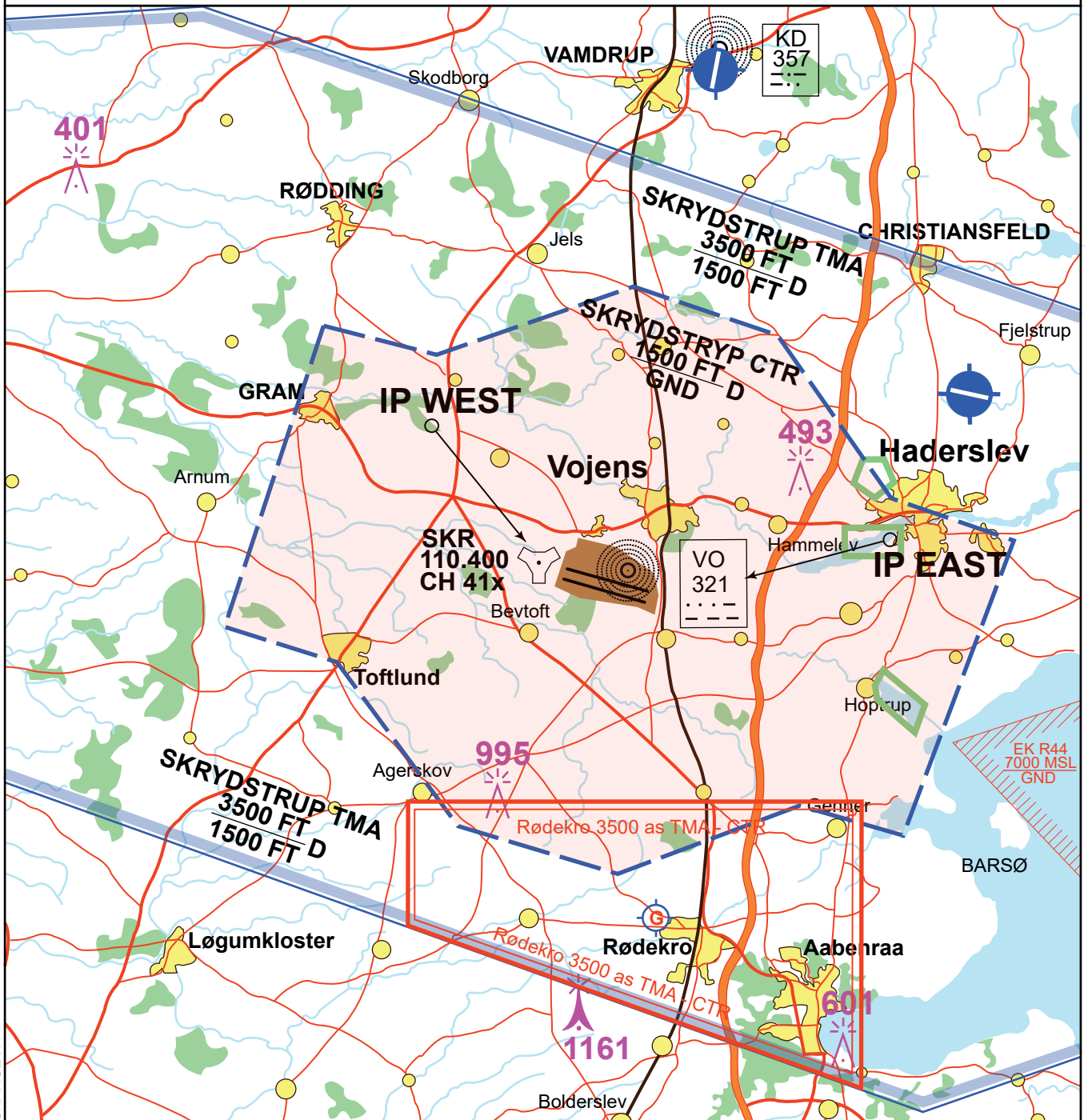
NOTE 1: Area with sensitive fauna is located at IP EAST, Slivsvæn and Ejsbøl (ref EKSP AD 2.1-9)
Overflying at heights below 1000 FT shall be avoided.

NOTE 2: Jet fighter aircraft:
From IP WEST RWY 10:
Right pitch at breaking point followed by right hand pattern.

NOTE 3: Gliding may take place within glider area Rødekrø without radio communication in the CTR.
Activity will be announced by Skrydstrup ATC

PSN IP EAST: SKR R-088/6.9 DME (INS 5513.8N 00925.0E)

PSN IP WEST: SKR R-315/4.3 DME (INS 5516.9N 00907.8E)



CHANGES: EDITORIAL