

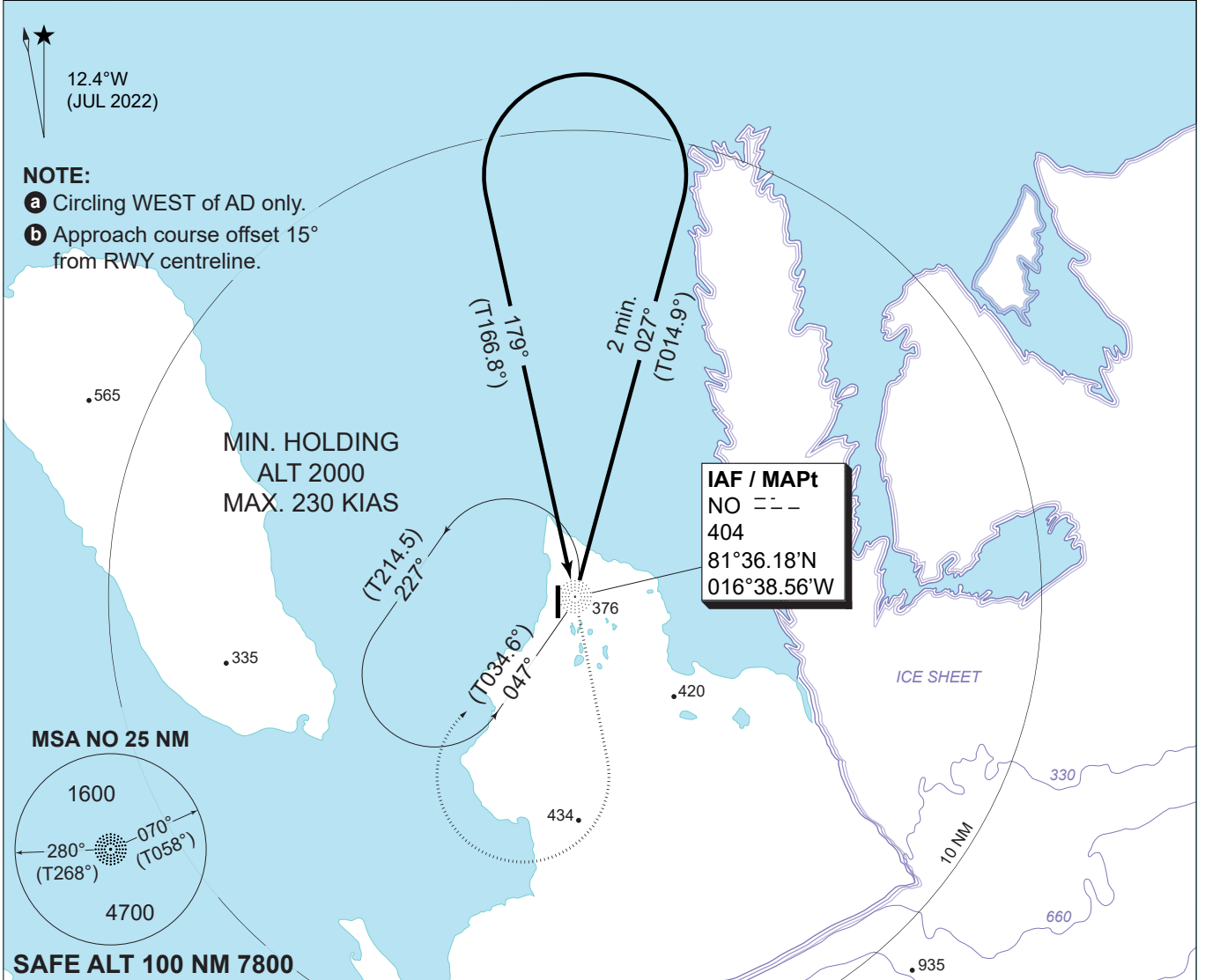
**MIPS**  
**INSTRUMENT APPROACH CHART**

**NDB RWY 19**  
**STATION NORD (BGNO)**

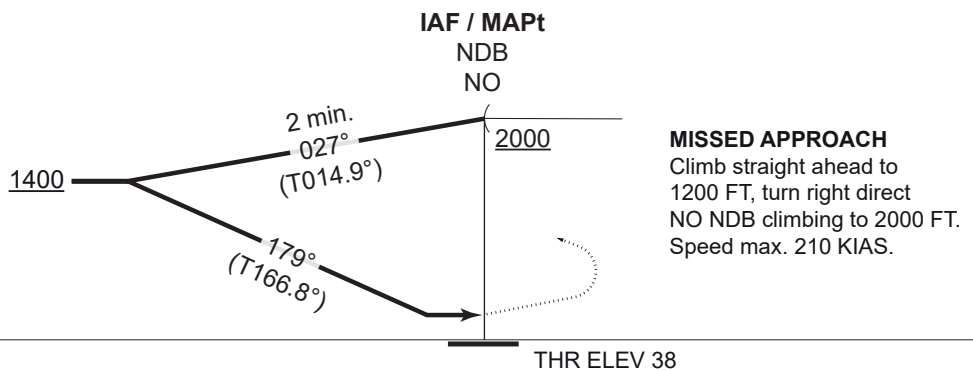
AD ELEV 61

STATION NORD RADIO  
118.100 267.300

NDB NO 404	APP COURSE 179° (T167°) <b>b</b>	FAF ALT NO FAF	DESCENT GR N/A	MDA <b>680</b>	THR ELEV 38 FT	ALS LENGTH 540 M	LDA 5984 FT
------------	----------------------------------	----------------	----------------	----------------	----------------	------------------	-------------



TA 11000



SRC

CATEGORY	C	D
S-NDB 19	<b>680</b> - 2.6 642 (700-2.6/3.0)	
CIRCLING <b>a</b>	<b>840</b> - 2.6 779 (800-2.6)	<b>850</b> - 3.6 789 (800-3.6)

**NDB RWY 19**

81°36.54'N  
016°40.63'W

**STATION NORD (BGNO)**

CHANGES: CIRCLING MINIMA UPDATED, AD ELEVATION CORRECTED, EDITORIAL.

AIR COMMAND DENMARK - MIL AIM 26 JAN 2023