

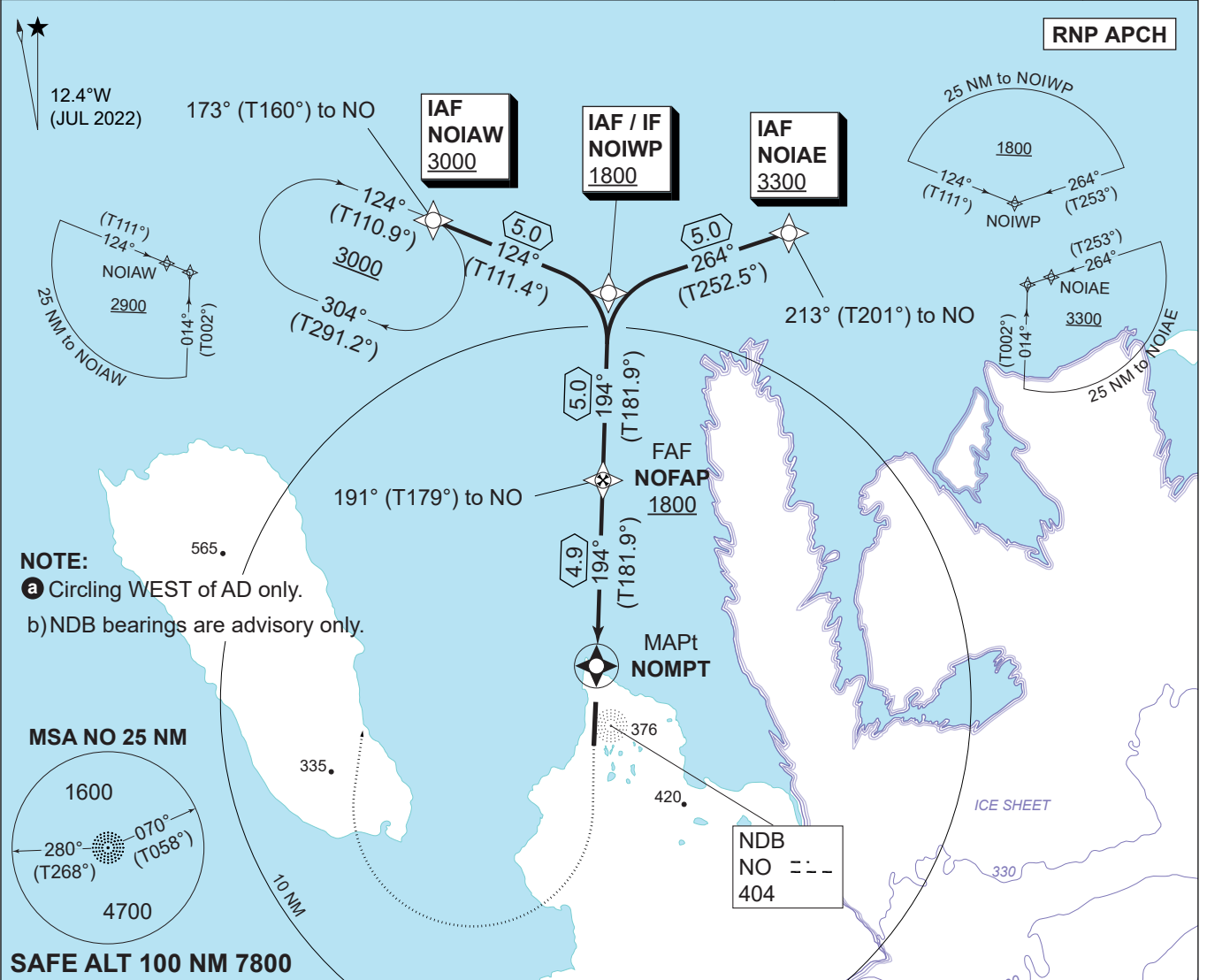
MIPS
INSTRUMENT APPROACH CHART

AD ELEV 61 FT

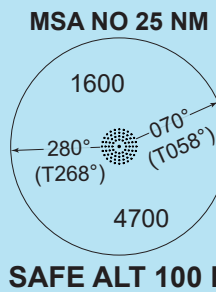
RNP RWY 19
STATION NORD (BGNO)

STATION NORD RADIO
118.100 267.300

NDB NO 404	DME NOR CH 54x	APP COURSE 194°M / 182°T	FAF ALT 1800	DESCENT GR 2.7° (4.7%)	MDA SEE CAT	THR ELEV 38	ALS LENGTH 540 M	LDA 5984 FT
---------------	-------------------	-----------------------------	-----------------	---------------------------	-----------------------	----------------	---------------------	----------------

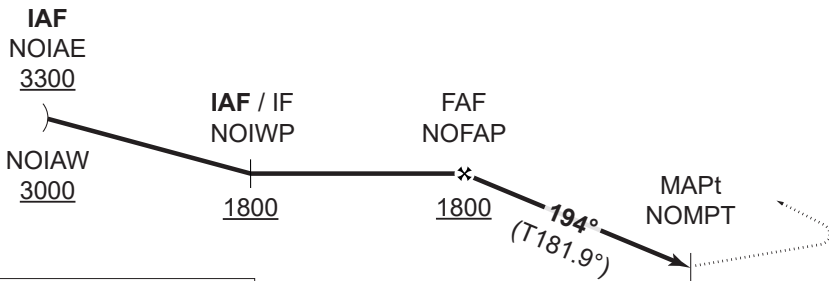


NOTE:
a) Circling WEST of AD only.
b) NDB bearings are advisory only.



CDFA 2.7° / 4.7%				
Dist to NOMPT	4	3	2	1
ALT	1530	1240	960	670

TA 11000
TCH 50



MISSED APPROACH
Climb on track 194° (T182°). At 1000 FT turn right and continue climb inbound NOIAW to join the holding at 3000 FT.



CATEGORY	A	B	C	D
LNAV (MACG 5%)	380 - 1.4 342 (400-1.4)	380 - 1.4 342 (400-1.4)	390 - 1.4 352 (400-1.6)	430 - 1.6 392 (400-1.8)
LNAV (MACG 2.5%)	390 - 1.4 352 (400-1.6)	410 - 1.4 372 (400-1.7)	440 - 1.5 402 (500-1.9)	460 - 1.6 422 (500-2.0)
CIRCLING a	470 - 1.5 409 (500-1.5)	570 - 1.6 509 (600-1.6)	840 - 2.4 779 (800-2.4)	850 - 3.6 789 (800-3.6)

RNP RWY 19

81°36.54'N
016°40.63'W

STATION NORD (BGNO)

CHANGES: NOR DME REMOVED.

AIR COMMAND DENMARK - MIL AIM 05 OCT 2023