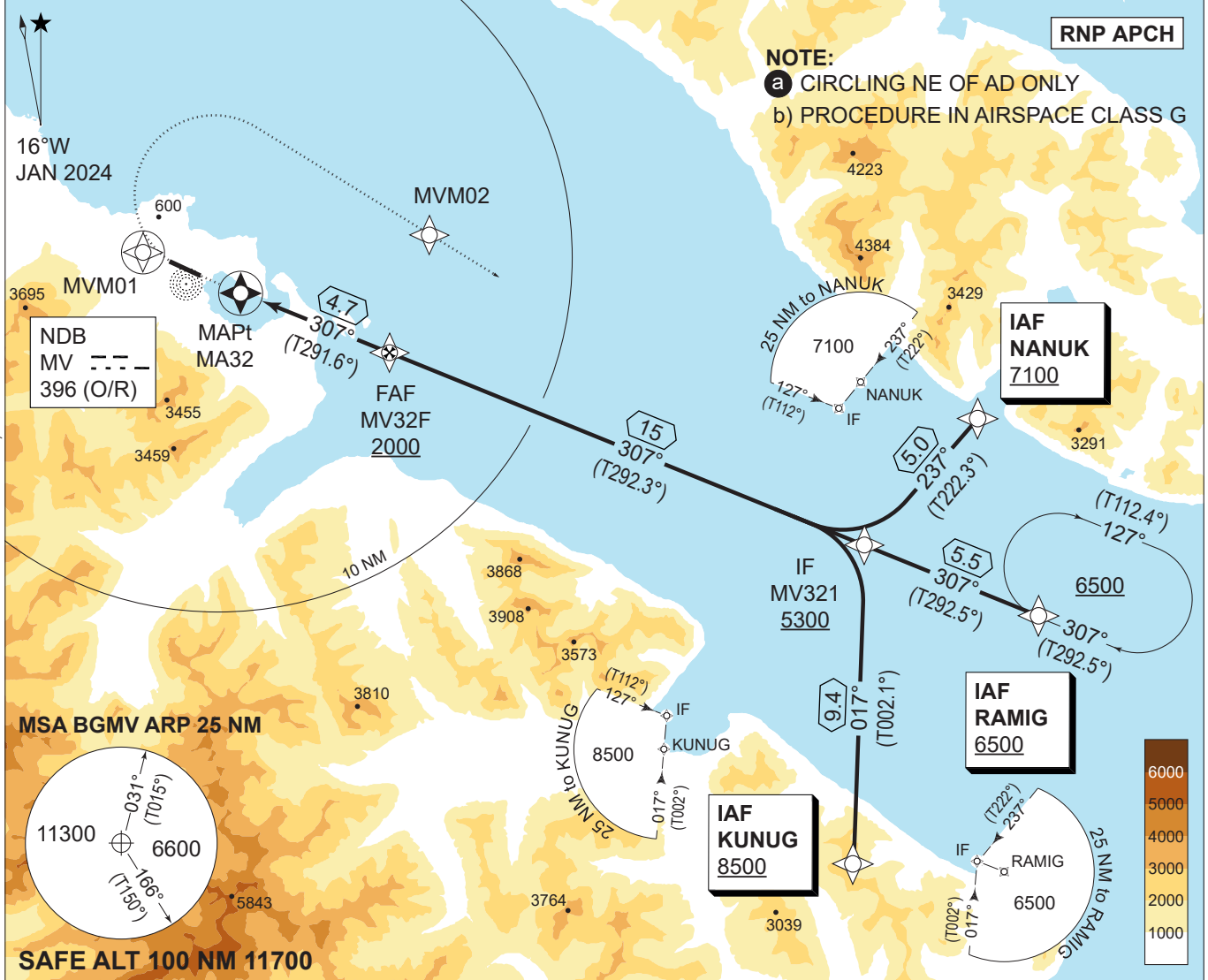


MIPS INSTRUMENT APPROACH CHART

AD ELEV 56

RNP RWY 31 MESTERSVIG (BGMV)

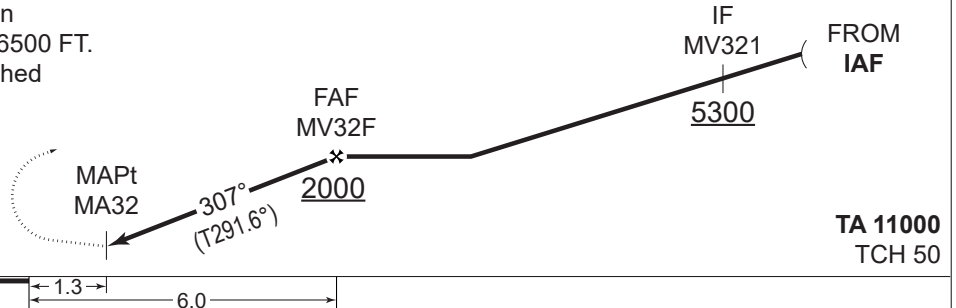
NUK INFORMATION 121.300 MHz 5526/8945/10042 KHz				MESTERSVIG 118.100 MHz 4050 KHz			
NDB MV 396 (O/R)	APP COURSE 307°	FAF ALT 2000 FT	DESCENT GR 3° (5.2%)	MDA 640	THR ELEV 30	ALS N/A	LDA 5906 FT



MISSED APPROACH

Climb on track 307° (T292°) to 800 FT or MVM01, whichever is first, turn right and continue climb inbound MVM02 then RAMIG to join holding at minimum 6500 FT. Speed max. 200 KIAS until established inbound MVM02.

CDFA 3.0° / 5.24%				
DIST MA32	1	2	3	4
DIST THR	2.3	3.3	4.3	5.3
ALT	820	1140	1450	1770



CATEGORY	A		B		C		D	
	LNAV (MACG 4.0%)	640 - 1.5 610 (600-2.8)		640 - 2.4 610 (600-2.8)		640 - 2.4 610 (600-2.8)		
LNAV (MACG 2.5%)	800 - 1.5 770 (800-2.8)		800 - 2.4 770 (800-2.8)		800 - 2.4 770 (800-2.8)			
CIRCLING a	900 - 1.5 844 (900-1.5)		1060 - 1.6 1004 (1100-1.6)		1380 - 2.4 1324 (1400-2.4)		1380 - 3.6 1324 (1400-3.6)	

RNP RWY 31

72°14.00'N
023°55.00'W

MESTERSVIG (BGMV)

CHANGES: MAG VAR, CHART NAME, BEARINGS, MINIMA, SDF REMOVED, MISSED APP. SPEED RESTRICTION AND CLIMB GRADIENT ADDED, MSA.

AIR COMMAND DENMARK - MIL AIR 28 DEC 2023